

Summer 1991

THE **ARROW**

of Pi Beta Phi

PI BETA PHI:  
A Steadfast Heritage  
of Service



## A Salute to the Pi Phi Volunteer

**T**wo Questions- Who works for a multi-national, non-profit corporation with subsidiaries in 398 cities, that has an annual national budget approximating two million dollars with subsidiaries (chapters) whose average budgets approach one half million dollars per year?.... What organization is best known for its quality control, its leadership role in developing program and policy initiatives, its outstanding opportunity for member development and association, and for its putting together of community partnerships, collaborations, and national philanthropic projects?

Answers- **YOU**- the Pi Phi volunteer, and Pi Beta Phi Fraternity!

In our work as Grand Council members, we are constantly made aware of Pi Beta Phi's evolution into a preeminent international organization recognized as an important and influential association. We have a business built on partnership and friendship. We are the original "Old Girl" network, and we've been in the business of Pi Beta Phi for almost a century and a quarter.

The opportunities and challenges presented by nearly 170,000 initiated Pi Phi members, 129 chapters and 376 alumnae organizations are met by approximately 130 volunteer national and province officers, committee and resource people. Add to that the 1,300 active Alumnae Advisory Committee and House Corporation members and thousands of alumnae club officers and members, and you will realize that our Fraternity's success is no accident.

You, the Pi Phi volunteer, are the real captain of our fraternal industry. You, who serve on AACs, the House Corporations, and Alumnae Club Boards are Pi Beta Phi's unsung, but certainly not unappreciated heroines. You are the union chiefs, the advisors, the planners, mentors, teachers, landlords, creditors, counselors, cheerleaders, and substitute mothers. You provide the continuity, the stability for the chapters, the clubs, and the Fraternity.

*(continued on pg. 23)*





# Contents



Summer 1991

Volume 107 Number 4

**Crest Award Winners**—  
Seven women have been selected as the first recipients for the Fraternity's Crest Award.  
*pg. 4*



**A Steadfast Heritage of Service**—  
Volunteerism in the 1990s. Pi Beta Phi gears up for the changes facing our society and the pool of volunteers.  
*pg. 7*

**Convention Volunteers**—  
More than 300 volunteers from the St. Louis area have been hard at work preparing for the 1991 Convention.  
*pg. 10*



**Alabama Alpha Installation**—  
The Fraternity welcomes back its chapter at Birmingham-Southern College.  
*pg. 12*

**Scholarship Winners**—  
Forty Pi Beta Phi collegians will be receiving financial assistance from the Fraternity in the coming academic year.  
*pg. 48*



**Graduate Consultants**—  
Eight young women have been selected as Resident and Traveling Graduate Consultants for 1991-92.  
*pg. 60*

**Departments**

**Foundation** .....14

**News of Arrowmont** .....16

**Community Service** .....20

**Links to Literacy** .....24

**Collegiate News** .....28

**Chapter Membership Chairmen** .....33

**Alumnae News** .....42

**In Memoriam** .....52

**Fraternity Directory** .....55

**Dear Editor** .....57

**Announcements** .....63

**Arrow Editor**  
Jennifer Moeller Barcus  
Pi Beta Phi Central Office  
7730 Carondelet, Suite 333  
St. Louis, MO 63105  
314/727-7338  
FAX: 314/727-8049

**Address Changes and In Memoriam**  
Pi Beta Phi Central Office  
7730 Carondelet, Suite 333  
St. Louis, MO 63105

**Copy Deadlines**  
Spring-January 10    Fall-July 10  
Summer-April 10    Winter-Oct. 10

**The ARROW** of Pi Beta Phi (USPS 032-540) is published quarterly by Pi Beta Phi Fraternity, 7730 Carondelet, Suite 333, St. Louis, MO 63105-3328. Second class postage paid at St. Louis, MO. **POSTMASTER:** Send address changes to The ARROW of Pi Beta Phi, 7730 Carondelet, Suite 333, St. Louis, MO 63105-3328. Correspondence of an editorial nature is to be addressed to the editor. Correspondence of a business nature should be sent to Pi Beta Phi Central Office.

**Cover** – Designed by Ann Denker Webster, Arkansas Alpha

**FOUNDERS OF THE FRATERNITY**  
Emma Brownlee Kilgore (1848-1924)  
Margaret Campbell (1846-1936)  
Libbie Brook Gaddis (1850-1933)  
Ada Bruen Grier (1848-1924)  
Clara Brownlee Hutchinson (1850-1931)  
Fannie Whitenack Libbey (1848-1941)  
Rosa Moore (1848-1924)  
Jennie Nicol, M.D. (1845-1881)  
Inez Smith Soule (1846-1941)  
Fannie Thompson (1848-1868)  
Jennie Horne Turnbull (1846-1932)  
Nancy Black Wallace (1846-1918)

**Founded 1867**



# PI BETA PHI CREST AWARD For OUTSTANDING ALUMNAE

Pi Beta Phi has established the Crest Award to recognize the achievements of alumnae through professional contributions or volunteer service to the community. The Fraternity is proud to present the 1991 winners of the Crest Award. Four women were selected for outstanding contributions to their profession; three were selected for outstanding contributions to their community.



**Nancy Ford**  
**Indiana Epsilon**  
**DePauw University**  
**New York, New York**

**Profession:**  
**Scriptwriter/Composer**

A performer, lecturer, script-writer and composer, Nancy Ford is perhaps best known for her work with daytime television serials. Nancy began writing for daytime serials in 1971 when she wrote for *Love of Life*.

Since that time she has been a scriptwriter for *Ryan's Hope*, *Guiding Light*, *Search for Tomorrow* and *As the World Turns*. She received two daytime Emmy Awards for *Ryan's Hope* in 1983 and 1984 and Grammy Award nominations for *Guiding Light* and *As the World Turns*. In addition, Nancy received two Writers Guild Awards for *Love of Life* and *Ryan's Hope*.

Nancy has composed three off-Broadway musicals, *Now is the Time for*

*All Good Men*, *The Last Sweet Days of Isaac* and *I'm Getting My Act Together and Taking It on the Road*, and a Broadway Musical, *Shelter*. She was winner of the Obie Drama Desk Award from the New York Outer Critics Circle and received a Grammy Award nomination for cast album of *"I'm Getting My Act Together and Taking It on the Road."*

A board member of the Council of Writers Guild of America, East, Nancy is also on the Board of Trustees for DePauw University. She was the 1990 Distinguished Professor of Humanities at Eastern Michigan University and was awarded an honorary Doctor of Arts degree from the same university in 1986. She is also a judge for the Writers Guild Foundation Fellowship Award and is involved in the Dramatist Guild Music Theatre Development Program.





**Patricia Albjerg Graham**  
**Wisconsin Alpha, affiliated**  
**Indiana Delta**  
**University of Wisconsin and**  
**Purdue University**  
**Cambridge, Massachusetts**  
**Profession: Dean of Graduate**  
**Education— Harvard**

A graduate of Purdue University with "highest distinction," Patricia Graham went on to get her master's degree at Purdue and a Ph.D. at Columbia University. Since that time the number of honorary degrees she has received are too numerous to list.

Immediately following her undergraduate career, Patricia began teaching at a Virginia high school and continued at Indiana University, Columbia University, Northern Michigan University and Harvard.

She is currently the Graduate School of Education Dean at Harvard University, the first woman dean at the prestigious university.

In addition, she was appointed Director of the National Institute of Education with the Department of Health, Education and Welfare from 1977-79.

Patricia is responsible for three books on the subject of education and has written a great number of articles which topic's ranged from literacy to women in academic life.

Her professional activities and awards include: National Science Foundation, Science and Engineering Advisory Committee, National Academy of Education President, and Commission of Precollegiate Education in Mathematics, Science, and Technology of the National Science Board.

**Patti Patton Leeman**  
**Oklahoma Alpha**  
**University of Oklahoma**  
**Oklahoma City, Oklahoma**  
**Community: Public Education**

The National Committee for Citizens in Education (NCCE) Chairman from 1986-90, Patti has long had an interest in improving public education. Patti has been a member of NCCE since 1982. The purpose of the organization is to "improve the education of all children by mobilizing and assisting citizens, including parents, to strengthen public schools."

Patti assisted in forming the Oklahoma City Public School Foundation. The Foundation was established to help improve the perception of public schools and to raise funds for programs and incentives for teachers, students and administration. Patti served on the Steering Committee to determine feasibility of such a foundation, was elected to the first Board of Trustees, and acted as Executive Director for two years. She is now on the Chairman's Council in an advisory capacity.

A fifteen-year volunteer at Omniplex, (a hands-on science museum



in Oklahoma City) Patti was able to see the growth of the museum which now holds more than 300 exhibits. She was president of the Board of Trustees for two years and president of Omniplex Volunteer Association in its first year.

In addition to her volunteer work, Patti enjoys freelance writing. She has written several education articles which have appeared in *The Daily Oklahoman* and *Oklahoma Observer*.



**Virginia Holt McFarland**  
**Texas Beta**  
**Southern Methodist University**  
**Houston, Texas**  
**Community: Children's**  
**Health and Welfare**

Virginia was instrumental in starting the Pi Beta Phi Library at Texas Children's Hospital in Houston, Texas. The library was established with a \$5,400 donation from the Houston Alumnae

Club to purchase 400 books. A member of the Board of Trustees at Children's Hospital, Virginia converted a linen closet into the library. The library now contains 3,000 books and offers audio and video cassettes for children and their parents.

Recently, Virginia received a Distinguished Alumnae Award from her alma mater, Southern Methodist University. In 1990, she received Citation and Award from Texas Children's Hospital Board of Trustees for outstanding service and contributions to the National Association of Children's Hospitals and Related Institutes (NACHRI). In 1989 she was made a Lifetime Honorary Trustee of NACHRI, only the fourth such appointment given during the history of the organization. In 1987 she was the recipient of the Houston Mayor's Award for outstanding volunteer service in the field of children's health.

Virginia's community service work spans more than 30 years. She is a member of the Advisory Board of the Ronald McDonald House and a board member of the Greater Houston Committee for the Prevention of Child Abuse.





**Jane Bryant Quinn**  
**Vermont Alpha**  
**Middlebury College**  
**North Salem, New York**  
**Profession: Columnist and**  
**Commentator on Finance**

Jane is the nation's leading commentator on personal finance, with news articles and television broadcasts read and seen by millions.

A *Newsweek* contributing editor, Jane writes on issues affecting personal finance. On the same subject, she has a twice-weekly newspaper column syndicated by *The Washington Post* to more than 250 newspapers. A columnist for *Women's Day* magazine, Jane writes a Money Facts column for every issue.

Also a television personality, Jane has given business news reports on *CBS Evening News with Dan Rather*, *The CBS Morning News*, and other nationwide programs. In 1988, she hosted a series on money management called *Take Charge!* for the Public Broadcasting System.

Author of *Everyone's Money Book*, a complete guide to personal finance, Jane is now working on another book, titled *Making the Most of Your Money* to be published later this year.

Jane was named by the World Almanac as one of the twenty-five most influential women in the United States.

A recipient of many awards, she has to her credit: an Emmy Award for outstanding coverage of news on television, John Hancock Award for excellence in Business and Financial Journalism, the Janus Award for excellence in television business reporting and three National Press Club Awards for Consumer Journalism.

**Linda Myers Taylor**  
**Ohio Beta**  
**Ohio State University**  
**Fort Meyers, Florida**  
**Community: Public Education**

Linda established the Lee County Public Schools Foundation. In 1985, Linda began consulting with the local school board about establishing a non-profit/private partnership between the community and the school system in Lee County. Her goal was to provide programs for the public schools with private funds. Linda organized a board of thirty top business and community leaders and was elected the founding president of the Foundation when it was chartered in 1986.

Linda went on to create the Golden Apple Teacher Recognition Program to recognize and honor the achievements of individual outstanding teachers. Six teachers are selected from the numerous nominations from the community. Next, Linda established the Academy of Teachers, allowing recipients of the Golden Apple to attend conferences and network meetings monthly.

Responding to an identified need for teachers to have more personal and pro-



fessional growth opportunities, Linda has raised more than \$50,000 to establish the Collegium of the Advancement of Teaching.

Linda has received numerous awards, among them: 1988 Presidential Citation for Outstanding Private Sector Initiatives, Commission of Education's Business/Partnership Award. In addition, CBS selected Lee County as one of eight sites featured on their national program focused on ways on improving education.



**Patricia Pulliam Upton**  
**Arkansas Alpha**  
**University of Arkansas**  
**Heber Springs, Arkansas**  
**Profession: President and**  
**Chairman AROMATIQUE**

President, chief executive officer and founder of Aromatique, Patricia Upton went from model to housewife to entrepreneur. Tired of staying at home while her two boys were in school, Patti began hanging out at a local gift store.

When the holiday season rolled around, the shop manager asked Patti to come up with something special to set the mood for the shop's Christmas Open House. Patti went home and gathered up several gifts of Mother Nature, including pine cones and nuts, then placed them in a wooden bowl with crushed bay leaves and chrysanthemums. Disappointed that the mixture did not have a smell, Patti added cooking oils and spices. The result was her first room fragrance, The Smell of Christmas.

Aromatique now produces eleven different room fragrance lines and sales have topped \$40 million. An average of 300 employees work for the company on an annual basis.

Aromatique's products are self-distributed and are available solely to hand-selected retail shops.

In 1987 Patti was named Arkansas Woman Entrepreneur of Year. She was also named Outstanding Woman of Arkansas.

Her company was given Business of the Year in Arkansas Award and in 1989, was ranked 39th in a list of the 500 fastest growing privately held companies in the United States by *Inc.* magazine.





# Pi Beta Phi: A Steadfast Heritage of Service

by Jean M. Egmon

*"Today is not yesterday: we ourselves change; how can our works and thoughts, if they are always to be the fittest, continue always the same? Change, indeed, is painful; yet ever needful; and if memory have its force and worth, so also has Hope."*

—Carlyle

The importance of change is not new. Thomas Carlyle wrote his passage on change in the mid 1800s, near the time of the founding of I.C. Sorosis. One hundred years later, long after I.C. Sorosis had changed her name to Pi Beta Phi, this same passage was featured in *A Century of Friendship in Pi Beta Phi* to introduce a section of the book entitled "The Changing Years - 1888-1940."

Pi Beta Phis are major stakeholders in the changes of society. Changes in attitudes and behavior, in age cohorts, in participation, in labor and education, and in the volunteer work force directly affect our need and means of existence as a fraternal organization for women.

Our founding principle of service inspired by friendship, gives us constancy in our mission. At the same time, it gives us responsibility for the continuous development of our organization and her members to meet the demands and opportunities of the society in which we move.

As Pi Beta Phi stands at the threshold of a new century, once again



she features change as a link in her history of friendship and as a guide in her planning of fraternity life.

What are the major changes occurring in society in general and in the volunteer/independent sector in particular, and what implications do they have for Pi Beta Phi?

In 1990, Independent Sector, a coalition of organizations whose mission is to encourage giving, volunteering and not for profit initiatives, commissioned the Gallup Organization to conduct a survey to establish reliable trend information on the volunteer/independent sector in the United States.

The survey results indicate that in 1989, 54% of those sampled said they had volunteered the previous year. This increase of 9% from 1987 resulted in 15.7 billion hours given in formal volunteer work, valued at \$170 billion dollars in labor alone!

Those groups showing the greatest increases in volunteer participation from 1987 were Blacks (an increase of 10%), Baby Boomers 25-34 years old (an increase of 17%), Baby Boomers 35-44 years old (an increase of 10%), divorced, widowed or separated persons (an increase of 13%), and persons employed part-time (an increase of 18%).

When respondents of the Gallup Survey were asked to give a reason for starting to volunteer, 62% said they wanted to do something useful. When asked how they learned about their volunteer activities, 42% said simply that they were asked by someone; 41% said it was because they were already a participant in the organizations; and 75% reported they had not turned down a request when asked to serve.

These data suggest that volunteerism, at least as compared to recent years, is on the rise. Blacks, Baby Boomers, divorced, widowed or separated persons and part-time workers especially are increasing their participation as volunteers. These groups, then, have particular volunteer-

potential as members in Pi Beta Phi right now. Although, as Table 1 shows, there are no groups of women outside the realm of possibility for providing useful and meaningful service as Pi Beta Phis.

This research also shows that people volunteer because they want to feel useful, and because someone asks them to serve, or because they are already participating in an organization. These findings tell Pi Beta Phis that our activities must be designed and conveyed as being useful, and we must ask our members directly for their service. Asking members to perform specific services and explaining their importance, rather than asking for help in general, is a strong motivator for volunteers.

Most of us can remember a time or two when we washed stacks of dirty dishes after a rush party, recycled cans on a steamy summer day or accepted an office because someone told us Pi Phi needed us for a specific undertaking and, as a friend, asked for our help.

In addition to the data provided by Independent Sector and Gallup, there are general societal trends that will likely affect Pi Phis in the coming century.

■ By 2000, one in three of the population will be from an ethnic minority group.

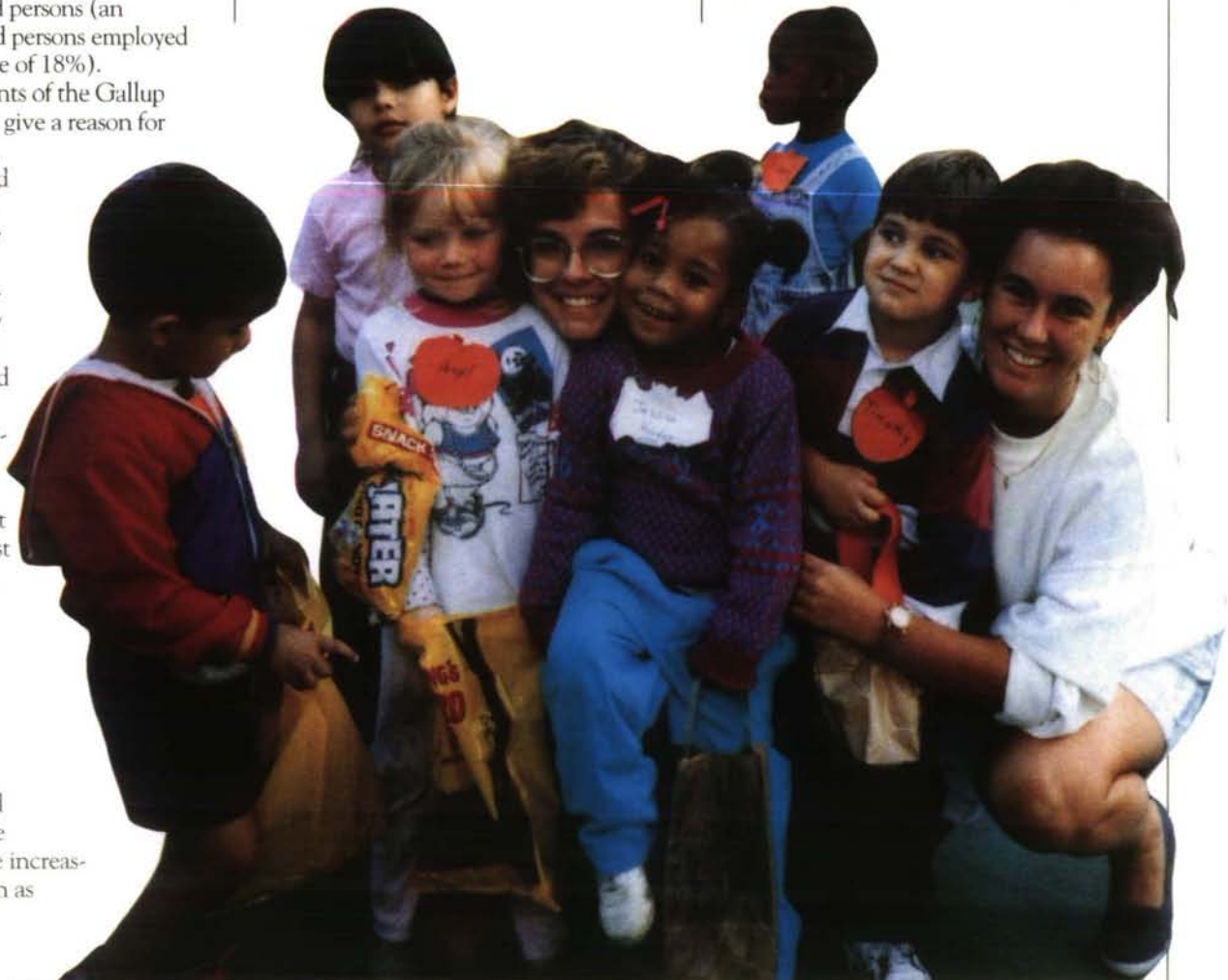
Given these groups' increasing participation in volunteerism, Pi Phi has the opportunity to tap this potential pool for members. Pi Phi also has the challenges of addressing new issues and societal needs brought closer to our attention by these members and of managing the changing dynamics of the Fraternity is membership.

■ Young adult (25-34) numbers are projected to fall 15% by 2000.

Despite the current good news about the Baby Boomers' increasing participation, Pi Phi will not have a new crop of Baby Boomers in the near future and will have to program for and rely on other age cohorts to provide service.

■ The fastest growing age sector of adults will be older Americans.

This trend tells us who, in large part, we should program for and rely on in and for our future. We should plan





part, we should program for and rely on in and for our future. We should plan programs and services for these women and solicit their input and involvement now! Our current generation of older Pi Phis can be our model for the next.

■ College age (18-24) young people will continue to decline.

Not only will Pi Phi not have a large group of young alumnae, she will have fewer traditional collegians to rush and pledge. A dearth in this area would negatively affect the entire Fraternity for years to come. All of us must work harder than ever to make each active chapter the strongest it can be, and we must encourage recruitment of non-traditional collegian women into our number. This will necessitate changes and flexibility in typical active chapter life. What is reasonable and appealing for an 18 year old woman, does not necessarily appeal to a 30 year old married woman with a part time job and a family.

■ The number of non-traditional, particularly older, students will increase on college campuses.

This tells us we have a new and different pool of potential Pi Phi pledges approaching, but our chapter and recruiting activities will have to be designed to be meaningful to the older student.

■ Almost two in every three new workers will be female by 2000.

■ By 2000, 61% of all women will have jobs.

■ By 2000, women's share of the work force will be 47%

More and more Pi Phis will be working women. Many of these working Pi Phis will even be collegians. Whether we need someone to hold a national office or attend a meeting, we will have to adjust our scheduling, programming and time demands so these valuable members can be active and find Pi Phi worth their while. Here, in particular, making these members feel useful, needed and wanted and directly asking for their involvement for some particular function can make the difference. We must let these women know that we recognize and need the special skills and relationships they bring from their careers.

## Female Participation in the Volunteer Work Force (Table 1)

Demographic Characteristics	Percentage of Cohort Participation	Average # of Hours Volunteered per Week
<b>Age</b>		
18-24	49%	2.9
25-34	65%	4.2
35-44	63%	5.8
45-54	61%	4.2
55-64	45%	3.6
65 +	45%	4.6
<b>Employment</b>		
Full-time	57%	3.6
Part-time	74%	4.9
Not employed	49%	4.2
<b>Race</b>		
White	59%	4.4
Non-white	37%	4.9
Black	41%	5.0
Hispanic	41%	6.1
<b>Marital Status</b>		
Married	82.1%	3.1
Single	61.5%	1.8
Divorced, Separated or Widowed	77.3%	3.4

### Sources:

*A Century of Friendship in Pi Beta Phi*, 1968.

Environmental Scanning Report given to The Office of Statewide Programming, University of Illinois, 1991.

*Giving and Volunteering In the United States*. Independent Sector, Washington D.C., 1990

Perhaps, too, we can make it more obvious to each member that through Pi Beta Phi she can find something not available in any of her other circles - that special brand of friendship that stands on the middle ground between herself and the outside world - a rare commodity in our busy lives.

The Fraternity has already taken steps to develop the organization internally in response to the current and

future demands and needs facing her members.

➤ The ARROW has been redesigned to address broad issues of fraternity life and to communicate Pi Phi as a true profession of ideals and activities in keeping with our founding principles.

➤ Links To Literacy has been created as our service philanthropy in direct response to members' needs and requests to do their own community something useful and tangible in their service through Pi Beta Phi.

➤ Jobs and duties of Pi Phi officers have been redesigned to cut down on the time commitment of officers, streamline reporting procedures and delegate authority.

➤ Active chapters have been encouraged to embrace ethnic diversity by welcoming members of all backgrounds.

➤ New awards have been created to encourage and highlight many different aspects of volunteer activity.

So, like "The Changing Years - 1888-1940," these are years of intense internal development for Pi Beta Phi. Out of necessity from internal and external changes, we are taking a good look at ourselves and at the world around us and asking, What is it all for? Where do we go from here?

Pi Phis before us must have asked these same questions when planning for and managing changes brought about by the Industrial Revolution, two World Wars, the women's movement, the sixties and the yuppies to name a few.

We must remember the constant that guides the planned changes of our fraternity's life is the same constant that has kept Pi Beta Phi alive in our hearts for well over a century.

This constant reveals itself symbolically in a least three places. Each of us has heard that to its members Pi Beta Phi means friendship. Also, recall "The Changing Years" is only a part of something bigger called *A Century of Friendship in Pi Beta Phi*. Finally, the results of Pi Beta Phi's own recent Alumnae Programming Survey indicate that when alumnae were asked, "What are the most important benefits of your Pi Beta Phi Alumna Membership?" Far and away the number one response was friendships.

Some things never change!

Pi Beta Phi does have a constant with which to guide our change as individuals and as an organization. It is this spirit that will lead us through the changes we encounter in the coming years. Then, in the year 2067, when we celebrate our second hundred years as an organization, we will again feature "The Changing Years" as part of our history and smile for their



## St. Louis Convention Committee

More than sixty women from the St. Louis metropolitan area comprise the local convention committee. These women oversee nearly 300 volunteers from the area, who together with the National Convention Coordinator Mary Kahlenberg Schroeder and assistant Jerelyn Wright Biehl will supervise the logistics of the 1991 Convention. The convention is being held at the Adam's Mark Hotel in downtown St. Louis June 22-27.

**General Chairman:**

Marty Wohler Bickel - MO B

**Assistant:**

Anne Taylor Blatherwick - KS A

**Hospitality Chairman:**

Pixie Mills Messey - MO B

**Assistant:**

Anne Parham Hizar - IA Z

**Registration Chairman:**

Mary Horton Sidwell - MO Γ

**Assistant:**

Mary Cassilly Wilson - LA A

**Treasurer:**

Sarah Murray Cappiello - MO A

**AAC/HC Seminar:**

Marianne Dunstan Brady - TN B

**Arrowcraft Sales:**

Julia Buser Walsh - MO B

**Assistant:**

Lois Karpe Arnold - IA H

**Arrowmont and Songfest Dinner:**

Donna Salz Sorenson - AZ B

**Assistant:**

Leslie Davis Niemoeller - MO B

**Art Co-Chairman:**

Ginny Johnson Eckhoff - MO B

**Art Co-Chairman:**

Susan Stoehr Morris - MO B

**Awards, Trophies & Fraternity History:**

Laura Ponte - TN B

**Boutique:**

Judy Gregg Harper - IA A

**Assistant:**

Barb Haddenhorst Woehle - MO A

**Boutique Treasurer:**

Sue Melberg Davis - IN E

**Convention Gifts:**

Nancy Sharp Near - MO B

**Convention Seating:**

Marla Johns Esser - MO B

**Assistant:**

Terri Place Cohn - MO B

**Chapter Banners:**

Jan L. Robbins Brock - IN Δ

**Chapter Histories & Alumnae Notebooks:**

Louise Angst - KS A

**Daily Dart:**

Jennifer Moeller Barcus - MO A

**Assistant:**

Christine Korst Kolar - IL Z

**Assistant:**

Connie Collins Schnable - IL Z

**Dinner Seating Co-Chairman:**

Ann Flachmann Babington - IN E

**Dinner Seating Co-Chairman:**

Laura Schlappizzi Osterholt - MO A

**Equipment:**

Tanja Dunbar - MO A

**Flowers Co-Chairman:**

Beth Ingham - CO A

**Flowers Co-Chairman:**

Candy Killam Kaufman - IL Z



Molly McNamara Sasser and Pat Hearn Peck discuss plans for the National Officers Dinner to be held prior to convention.



**Flowers Co-Chairman:**

Donna Salz Sorensen - AZ B

**Flowers Co-Chairman:**

Jane Vollmar Saunders - MO B

**Information Desk:**

Joan Curtis Sims - Co A

**Assistant:**

Carol McBride Reifsteck - IL A

**March Event:**

Molly McNamara Sasser - TN B

**Assistant:**

Pat Hearn Peck - TX B

**Meal Tickets:**

Kim Johanson Hof - MO A

**Assistant:**

Amy Vogt Clausing - Mo A

**Memorial Service:**

Anne Travis O'Connell - MO B

**Assistant:**Anne O'Connell Albrecht -  
MO A**Message Center:**

Ann Jacobsen Hiemstra - IA Γ

**Name Badge Co-Chairman:**

Jeanne Noonan Hunter - MO Γ

**Name Badge Co-Chairman:**

Katina Harper Truman - IL A

**National Officers Dinner:**

Pat Hearn Peck - TX B

**Assistant:**

Molly McNamara Sasser - TN B

**Opening Reception Co-Chairman:**

Candy Killam Kaufmann - IL Z

**Opening Reception Co-Chairman:**

Barb Buckley Sloss - KS A

**Packets:**

Janet B. Beazley - GA A

**Packing:**

Jenny Kerckhoff - TX Δ

**Panhellenic Luncheon:**

Vicki Vickery Jacoby - IL E

**Assistant:**

Pat Dougan Neilson - MO B

**Photography:**

Marta Hawthorne Wolfe - IN E

**Pledging & Initiation:**

Mary Mitch Mullendore - IL Z

**Assistant:**

Lynn Evers Short - IN E

**Printing:**

Beth Dooley - MO Γ



**Carolyn Metzger Harmon presents ideas for the Wine Carnation Banquet to the local St. Louis Convention Committee during a spring meeting of the committee.**

**Publicity:**

Tricia Miller Witthaus - MO A

**Recreation Day &****Post-Convention Tour:**

Sandra Goehring Wilson - GA A

**Registration Desk:**

Susan Witler Vevang - MO B

**Assistant:**

Brenda Carlson Carlson - IA Γ

**Special Meal Events****Co-Chairman:**Ann Drochelmann Frailey -  
MO A**Special Meal Events****Co-Chairman:**

Chris Jubel Homan - MO B

**Transportation/****Welcome & Farewell:**

Marie Paley Farnsworth - IL ⊖

**Assistant:**

June Thursby Siegerist - MO B

**Volunteers & Censors:**

Julie Wessel Cobaugh - MO B

**Assistant:**

Mary Rogers Gordon - MO A

**Welcome to St. Louis Dinner****Co-Chairman:**

Sue Sanders Block - MO B

**Welcome to St. Louis Dinner****Co-Chairman:**

Janice Garrett Marsh - TX Δ

**Welcome to St. Louis Dinner****Co-Chairman:**

Patti Moore Shapiro - MO A

**Wine Carnation Banquet:**Carolyn Metzger Harmon -  
MO B**Assistant:**

June Harlow Harter - MO B



**Hospitality Chairman Pixie Mills Messey and Assistant Ann Parham Hizar work with Chris Jubel Homan on details of special meal events for the 1991 Convention.**

# Installation

## Alabama Alpha Returns to Birmingham-Southern College

The history of Alabama Alpha goes back as far as 1927. It was in Pequot, Michigan at the extension session of the 1927 Convention, probably the only one in the history of the Fraternity to date at which no opposition to petitioning chapters or extension in general appeared from the floor of the convention. There was a plea for expansion in the South and the vote of the delegates granted a charter to Alabama Alpha. More than sixty years have passed since then, but the excitement of welcoming Alabama Alpha is as intense now as it was in 1927.

Pi Beta Phi's recolonization efforts began with participation in Birmingham-Southern College's formal rush in September of 1990. Approximately fifty members of Florida Beta made the trip from Florida State to Birmingham to assist with the recolonization. The Florida Betas combined with the national rush team of Grand Vice President of Collegians Jo Ann Minor Roderick, Grand Vice President of Membership Carolyn Pavletich Lesh, Director of Collegiate Extension Kay Cromb Brada, Supervising Officer Dawn Sheeler Ford, and Resident Graduate Consultants Tracy Nevill and Salli Preston to conduct

rush. All of the hard work paid off when Pi Phi pledged twenty-two outstanding women. Alabama Gamma collegians joined the national rush team and area alumnae to welcome the charter pledges.

Under the guidance of RGC Tracy Nevill and with assistance from an exceptional Alumnae Advisory Committee, the charter members had a fun-filled and memorable pledgeship. Committee members include: Kay Williams Wise, Melanie Merkle, Jill Verdeyen, Annette Mitchell Mills, Susan Nuckolls and Martha Ann Galloway Ware.

Panhellenic was extremely supportive of the new group on campus and provided Pi Phi Pals for the women. Each pledge received two Pi Phi Pals from other sororities. The Pals helped the charter members become accustomed to

Greek life at BSC. The charter members received further encouragement and support from the Birmingham Alumnae Club. Each pledge was assigned a Slightly Older Sister (SOS) from the alumnae club. This was a special program in that it enabled the pledge to see how Pi Phi affected the lives of the alumnae and how it is much more than a four-year commitment. The pledges found out who their SOS was during a "Pledges on Parade" dinner hosted by the alumnae club.

The Alabama Alpha pledges were extremely active on campus. The women participated in intramural football and in a campus-wide philanthropic activity in which they took underprivileged children to the city zoo. But Alabama Alpha took the campus by storm when they won the annual Mr.



**Charter members of Alabama Alpha gather before the installation banquet.**



Hilltopper event sponsored by Alpha Omicron Pi. Every chapter on campus performs a skit during Mr. Hilltopper. The Pi Phi skit used an adaptation of a favorite television serial, Beverly Hillbillies and won first place.

Official installation festivities began on Friday evening, the weekend of February 9-10, 1991. Collegiate Province President Peggy Malone Peery and Supervising Officer Dawn Ford performed the reading of the constitution. From there, the women went to the Preparatory Service conducted by Carolyn Helman Lichtenberg, Jo Ann Minor Roderick, Carolyn Pavletich Lesh, Adrienne Hiscox Mitchell and Kay Cromb Brada. The highlight of the night was the Cookie-Shine. A large blue sheet bordered in wine fabric held a seven-foot angel made of cookies, cupcakes and candy. Votive candles and smilax were also used to decorate the sheet. The pledges sat around the sheet and at each place setting there were notes and gifts.

Pledges took part in the return of the pledge pin ceremony by passing a golden arrowhead pillow, made by Annette Mitchell Mills, on which they placed their pins. Prior to the installation weekend, Alabama Alpha pledges voted on women who best exemplified the Seven Gifts of Pi Phi. A candlelighting ceremony was then performed at the Cookie-Shine to honor those pledges. Finally, the history of the Cookie Shine was read by Dawn Ford. The night was filled with fun and excitement as collegians from Alabama Beta, Alabama Gamma, South Carolina Beta, Georgia Alpha and Florida Beta joined in the celebration.

The initiation ceremony was held in the Pi Phi chapter room at Stockham Hall on the Birmingham-Southern campus. Many national officers assisted with the ceremony which was performed by Grand President Carolyn Helman Lichtenberg.

Held at the Vestavia Country Club, the installation banquet was a time of celebration. Local Installation Chairman and former Grand Council member Annette Mitchell Mills was the toastmistress for the evening.

The tables were covered with ivory table cloths and arrangements of crystal angels surrounded by smilax were used as centerpieces. Each angel held an ivory candle which was lit during the dinner. At the end of the evening, each new initiate was given an angel from the centerpiece as a memento of the event.

**1927 charter members Virginia McMahon and Virginia Hicks Sutter returned to Birmingham-Southern College to be part of the reinstallation of Alabama Alpha.**



A candlelighting ceremony, executed by Adrienne Hiscox Mitchell, Grand Vice President of Philanthropies, reminded all in attendance of Pi Phi's founding and paid tribute to our twelve founders. The two candlelighters were former Alabama Alpha Chapter Presidents Melanie Merkle and Sabina Goetz. A Loving Cup ceremony was then conducted. Grand President Carolyn Lichtenberg represented the national Fraternity, Alumnae Club President Kay Stammer Kelly represented the alumnae and Chapter President Heather Clarke represented the active members. The chapter was also presented with some gifts at the banquet. They received a silver serving tray from Grand Council, two silver candlesticks from the Birmingham Alumnae Club and a Loving Cup from the women of Zeta collegiate province. The evening climaxed when the Alabama Alpha's original charter was presented to the chapter. In attendance at the banquet were two 1927 charter members, Virginia McMahon and Virginia Hicks Sutter, who joined Heather Clarke in receiving the charter.

Sunday, after the model chapter meeting, a reception tea was held in Stockham Hall's parlor. Well attended by parents, students and friends, the reception was in honor of the Alabama Alpha chapter.

Birmingham-Southern College is the result of a merger of Birmingham College and Southern University in 1918. The campus, located in the western section of Birmingham, consists of 188 beautiful wooded acres. Enrollment currently stands at more than 1800 students, with 70% of the campus being Greek. Known as the Hilltop, BSC has seven Panhellenic groups on campus: Alpha Omicron Pi, Alpha Chi Omega, Chi Omega, Kappa Delta, Zeta Tau Alpha, Alpha Kappa Alpha and Pi Beta Phi.

## Alabama Alpha Charter Members:

**Melissa Allen  
Robin Ashe  
Sarah Baggette  
Jennifer Barber  
Margaret Anne Clark  
Heather Clarke  
Angela Cooper  
Stephanie Fowler  
Keira Hall  
Pam Hofer  
Carmen Jones  
Kim Lambert  
Jessica Lewis  
Cari Martin  
Ange Newton  
Traci Parnell  
Sara Saliba  
Katherine Samuel  
Lili Searcy  
Caroline Smith  
Lynya Talley  
Susan Walker  
Elizabeth Wood**





**Mary Ann Behlen Hruska,  
Treasurer**

## Managing the Funds: A Trustee Highlight

A cameo look at Pi Beta Phi Foundation Treasurer Mary Ann Behlen Hruska reveals a woman who maintains a strong balance between her professional function as vice president of a family-owned corporation, her role as a wife and mother, and her strong commitment as a civic leader, particularly in the field of education.

A graduate of the University of Nebraska and a Nebraska Beta Pi Phi, Mary Ann currently resides in Walnut Creek, California. In addition to her service as the Foundation Treasurer, she also provides Pi Phi leadership as president of the California Beta House Corporation and is a past president of her alumnae club. Outside of her Pi Phi activities, Mary Ann is involved in several business education partnerships and serves in elected and appointed positions on numerous local, county and state educational boards and committees. In 1989, she was appointed by the U.S. Secretary of Education to serve a three-year term on the Fund for the Improvement and Reform of Education and Teaching, which is an advisory board to the Secretary.

Mary Ann's interests transcend education to include involvement in a number of cultural organizations. Pi Phi is indeed fortunate to have her commitment, her wisdom and her broad experience as a strong base is built for the Pi Beta Phi Foundation.

*The Arrow of Pi Beta Phi*

## Leadership, Nashville Style

At Convention 1989 in San Diego, an effort was begun to address the basic needs of Arrowmont School of Arts and Crafts. Meeting these needs is essential if our highly acclaimed arts and crafts school is to continue offering the quality education that has become its hallmark. Arrowmont has turned to individuals and alumnae clubs for assistance in meeting both endowment and building costs and the response has been heartwarming.

In keeping with the leadership role that it has played in the financial support of the Fraternity's major philanthropy, the Nashville Alumnae Club becomes the second alumnae club to obtain leadership status in the Pi Beta Phi Foundation's campaign for Arrowmont. The club's pledge of \$100,000 is the largest thus far from any alumnae club. The multipurpose room in Arrowmont's proposed new dormitory will bear the Nashville Club's name in recognition of this generous gift.

The gift of the Nashville Club comes from the money raised in its annual four day "Christmas Village" held each November. Originating in 1961, the event is now staged at the Tennessee State Fairgrounds, where over 250 merchants and craftsmen come from all over the country to par-

ticipate. A portion of the proceeds from the event benefit the Bill Wilkerson Hearing and Speech Center in Nashville; however, Arrowmont has also been the recipient of a significant amount each year. The 1990 gift from the Nashville Club was \$30,600—the largest gift last year from any Pi Phi club or chapter. This annual honor has been the Nashville Alumnae Club's as long as records have been kept.

Over the years, the Nashville Club's donations have been used for a variety of programs and equipment for Arrowmont. Most recently, the expansion of the dining room in Staff House was made possible by a previous gift from the club.

Leadership in giving! The Nashville Alumnae Club promises to continue in this role.

Following the example of the first two Leadership Clubs, St. Louis and Nashville, other alumnae clubs may participate as Foundation Leadership Clubs to benefit the campaign for Arrowmont. The Leadership Club program is designed to give special recognition to an alumnae club for its leadership gift support. Clubs may participate at one of four leadership levels: \$100,000 and up; \$75,000 to \$100,000; \$50,000 to \$75,000; and, \$30,000 to \$50,000. Those interested in more information about becoming Leadership Clubs may contact their respective Alumna Province President or the Foundation office in Pi Beta Phi Central Office.



**Foundation officers Carol Warren and Adrienne Mitchell pause during their conversation with Nashville Club President Christy Cason Robinson and former president Cassie Cunningham Edenton during Arrowmont's Pi Phi Arts Weekend. The Nashville Alumnae Club pledged \$100,000 to the Pi Beta Phi Foundation.**



**Mayme A. Campbell**  
Indiana Alpha;  
Franklin, Indiana

**Josephine Altman Case**  
Illinois Epsilon;  
Tucson, Arizona

**Marian Bixler Cassady**  
New York Alpha;  
Boca Raton, Florida

**Helen Ward Castendyck**  
Illinois Zeta;  
Davenport, Iowa

**Ruth Howard Chittenden**  
Missouri Alpha;  
Libertyville, Illinois

**Carol Walker Congdon**  
D.C. Alpha;  
Osceola, Pennsylvania

**Norma Arnedt Coons**  
Ontario Alpha;  
St. Catharines, Ontario

**Grace McKee Evans**  
Ohio Alpha;  
Charleston, South Carolina

**Lorena Accola Fitzell**  
Colorado Alpha;  
Denver, Colorado

**Mildred Day Graybill**  
Pennsylvania Gamma;  
Mechanicsburg, Pennsylvania

**Frances Shoemaker Gregg**  
Oregon Alpha;  
Portland, Oregon

**Miriam Herron**  
Illinois Eta;  
Shelbyville, Illinois

**Helen Hoffa**  
Pennsylvania Beta;  
Lewisburg, Pennsylvania

**E. Carola Wyker Hoyt**  
New York Alpha;  
Syracuse, New York

**Helen Tracy Huber**  
Ohio Beta;  
Sidney, Ohio

**Helen Stilphen Hungerford**  
Vermont Alpha;  
Saint Albans, Vermont



**Dorothy Grace Jenkins**  
Wisconsin Alpha;  
Denver, Colorado

**Katharyn Price Johnson**  
Maryland Alpha;  
Scarsdale, New York

**Marion Augur Keller**  
Michigan Alpha;  
Palm Harbor, Florida

**Alice Crowe Kellogg**  
California Alpha;  
LaJolla, California

**Marjorie Cleveland Miller**  
Colorado Alpha;  
Encino, California

**Elizabeth Spyker Owen**  
Pennsylvania Beta;  
Trumbull, Connecticut

**Dorothy Ewing Parsons**  
Washington Alpha;  
Sacramento, California

**Margaret Hesson Pearce**  
Nevada Alpha  
(affiliated Michigan Beta);  
Elko, Nevada

**Ada Dykes Pegues**  
Kansas Alpha;  
Golden Valley, Minnesota

**Genevieve Spader Pillsbury**  
California Beta;  
San Francisco, California

**Bertha Coughlen Shelhorn**  
Indiana Gamma;  
Kokomo, Indiana

**Jean Flanagan Skavish**  
Pennsylvania Beta;  
Pittsburgh, Pennsylvania

**Franc Babcock Spencer**  
Washington Beta;  
Los Gatos, California

**Maria Martinez Spurgeon**  
Minnesota Alpha;  
Philadelphia, Pennsylvania

**Susan Lessert Stanley**  
Oklahoma Alpha;  
Carmel, California

**Louise Hervey Stevenson**  
Indiana Beta;  
Cleveland Heights, Ohio

**Florence Cranston Wilkens**  
Colorado Beta;  
Salana Beach, California

**Miriam Williams**  
Illinois Epsilon;  
Carthage, Illinois

**Flora Edmond Winton**  
Texas Alpha;  
Houston, Texas





# News from ARROWMONT

by Cynthia Huff

## Theresa Tyler Named Arrowmont Director of Development

Scan the job listings in any major art periodical, and you'll notice that art organizations all over America are looking for employees to write grants and raise money. Arrowmont School is no exception. After a 12 month search, the School's Board of Governors has hired Theresa Tyler as Arrowmont's Director of Development and Public Relations. Theresa, a graduate of the University of Tennessee, is a member of Alpha Delta Pi. Primarily, it will be Theresa's job to locate sources of funding outside Pi Beta Phi which will go toward The Campaign For Arrowmont, a \$2.3 million capital and endowment campaign which is being conducted by the Pi Beta Phi Foundation.

In her office overlooking Arrowmont's library terrace, Theresa was asked if the endowment could conceivably cover all of Arrowmont's expenses, Theresa said, "It could. If the campaign goal is met, then it will. The Foundation is raising endowment money which, if invested, will generate enough income. Once the endowment is raised, it goes on raising money forever."

Theresa used the planned Artist-In-Residence Program as an example of how an endowment works. "The endowment amount for Arrowmont's Artist-In-Residence Program is \$500,000. If investment interest rates are 10%, then we would get \$50,000 for materials, supplies, etc. Generally

the interest rate changes with inflation. If inflation accelerates and the interest rate goes up, then the income generated by the investment goes up— if it is invested wisely."

With a 98% success rate in writing grant proposals, Theresa seems capable of handling the task she has been given. She is an experienced fund-raiser who has pulled more than one organization out of the red and into the black. Before moving to Gatlinburg in January, Theresa lived in South Bend, Indiana for many years and worked for several non-profit organizations including the YWCA and Big Brothers/Big Sisters.

It was while she was Foundation Director for St. Joseph's Hospital in

Mishawaka, Indiana that Theresa saw Arrowmont's job opening in *The Chronicle of Philanthropy*. As a Knoxville, Tennessee native, Theresa saw the job as an ideal position for her skills and interests. In addition, it is an opportunity to be near her mother and her son and his family who live in Knoxville.

Theresa spent a great deal of time observing children's classes and the Spring Workshops and commented, "I wish there was some way to get all Pi Phis to come here. I think they are missing something by not seeing what they've done. I don't think Pi Phis, by and large, are aware of the magnitude of what they've done. If I'd been part of that, I'd feel very proud."

**Theresa Tyler joined the Arrowmont School staff in January as Director of Development and Public Relations. Theresa is a Knoxville, Tennessee native who moved to Gatlinburg from South Bend, Indiana.**





## Arrowmont to Inaugurate Resident Artist Program

Arrowmont School's faculty is composed of some of the craft world's brightest stars, many of whom were singled out early in their professional careers by winning artist-in-residence status at various art centers throughout the nation. Typically, an artist-in-residence is given a studio for several months or several years to work full-time on his or her art. Such residencies are highly sought after, particularly by beginning art professionals. The names of America's most influential residency programs are often heard during conversations and lectures at Arrowmont, and a list of distinguished "graduates" can lend a forward thinking host institution an element of prestige. It is not surprising, therefore, that Arrowmont will join the residency ranks this year by inaugurating its own artist-in-residence program.

Bill Griffith, who is coordinating the program, said recently, "Just the name Arrowmont has a prestigious ring to it, and my feeling is that a residency program can only add to that. Because Arrowmont's name has such a good reputation, it will attract quality people."

Concrete planning for the residency program began last year after Griffith, Arrowmont's Assistant Director, sent a survey to 240 current or former resident artists from 8 host institutions. Sixty-nine artists completed the survey, answering questions such as: What is the ideal length of a residency? How many resident artists make a good team? How many hours are you committed to work for the host institution? Does the host institution provide you employment? How many hours a week do you spend in your studio?

Subjective questions included: Describe the one thing you would change about your residency? Do you expect to stay in the surrounding area after completing your residency.

Using the surveys as a guide, Arrowmont's residency program has been structured to accommodate 3-5 artists who will work 10 hours a week for the school. The artists then pay

The artist-in-residence studio building will feature four studios. Construction is scheduled to be complete by late August 1991.



**ARTIST STUDIO WORKSHOP QUADPLEX**

FOR: ARROWMONT SCHOOL OF ARTS & CRAFTS

DATE: 14 SEPT 1990 DRAWN: 02/10

ARCHITECT: DONALD E. JONES  
131 CHURCH AVENUE, SUITE B  
SEAFORD, DELAWARE 19970

\$175 a month for their studio and housing. The program seeks to provide artists access to valuable studio equipment and the time and space to develop a major body of work in Arrowmont's community environment of students and visiting faculty. At the end of the 9-11 month residencies, a group exhibition will feature selected work executed during the program.

Griffith says the ideal candidate is a self-directed artist who will want to be involved in the diverse programming that Arrowmont provides. "We don't want them to hide out in their studios." To be at Arrowmont, Griffith added, "you have to be a somewhat

social person, and sometimes artists aren't the most social people. We want people who can work with that team spirit the way our staff members do. So the ideal candidate should be able to be a part of that team."

It is hoped the brand new residents' studio building will be completed by early August, so that the program can begin by mid-September. Because this will be the program's maiden year, Griffith says he will explain to Arrowmont's first artists-in-residence that there may be a lot of rules bent and a lot of rules created in the middle of the program. "It will be a learning year. It should be exciting."



A hill behind Arrowmont's metalsmithing studio has been chosen as the site of the resident artists studio building. Visible in this photograph is Arrowmont's main complex (left), Staff House (center, with window), and several Gatlinburg hotels in the distance.



## Arrowcraft and Arrowmont Demonstrate at Biltmore Estate

April 6 and 7 artists representing Arrowcraft and Arrowmont gave demonstrations in what must have been the most illustrious craft fair "booth" they've ever occupied. The outdoor room was made of Indiana limestone with a patterned brick floor and is but one small alcove in the Asheville, North Carolina castle commissioned in 1887 by George Vanderbilt, grandson of U.S. railroad industrialist and financier Commodore Cornelius Vanderbilt.

Now under the blanket name, Biltmore Estate, the Biltmore House took 5 years to build and opened on Christmas Eve 1895. Today visitors to the estate can tour a winery, wander the gardens, and see more than 50 rooms in the house from the downstairs rotisserie kitchen, pastry kitchen, and main kitchen to the upstairs banquet hall with a table capable of seating 64 diners. Film fans may recognize the house as Shirley McLaine's home in Peter Seller's popular movie, "Being There".

Arrowmont and Arrowcraft were on the property at the Estate's invitation to participate in Appalachian Crafts Weekend as part of the annual Festival of Flowers. Biltmore's connection with Appalachian crafts goes back to the early 1900s when George Vanderbilt's wife Edith was instrumental in forming a woodcarving club for girls and boys whose families lived on the estate. The club developed into Biltmore Industries, which enjoyed great success for many years and is credited with assisting young men and women in the Asheville area in learning valuable skills and trades.

Several Pi Phis stopped at the Arrowcraft booth throughout the weekend to buy weavings and to express their excitement at finding Arrowcraft on the premises. Peggy Whitted, Diane Lunsford, and former Arrowcraft Manager Mary Dale Swan demonstrated weaving, basketry, and woodcarving for Arrowcraft, while former Arrowmont students, Erich Richter and Cynthia Huff demonstrated metalsmithing and pastel drawing for the School.

Despite the crowds, the Biltmore staff was unfailingly friendly and helpful to our demonstrators. The weather was flawless, the flowers breathtaking, and the Biltmore apple honey nut ice cream was worth every minute spent waiting in line to buy it.

## Four Turned Wood Artworks Added to Permanent Collection

Four turned wood artworks have been added to Arrowmont School's Permanent Collection. All of the acquisitions are directly related to the national woodturning conference hosted by Arrowmont last October.

Robyn Horn, daughter of Arkansas Alpha Dede Dietrich Hutcheson, has given "Pierced Geode" to Arrowmont after it was exhibited at the school October 24-December 8, 1991, as part of the "Woodturning: Vision and Concept II" exhibition. Robyn is a respected turner and collector from Little Rock, Arkansas who has taken several classes at Arrowmont.

Michael Peterson's vessel, "White Stone Desert" was purchased while in the same exhibition. Michael is a professional turner from Edmonds, Washington, and will teach at Arrowmont this summer. Ron Kent of Kailua, Hawaii, gave his Norfolk Island Pine bowl entitled "Translucent Bowl II" to Arrowmont at the close of the popular exhibition.

"The Big Apple," a giant red apple made of laminated maple, was turned and assembled by members of the New York Woodturners Association. Originally intended to be a part of the woodturned totem poles, "The Big Apple" was given to Arrowmont's Permanent Collection in January.

Arrowmont's Permanent Collection contains two and three-dimensional artworks given by visiting faculty. Pieces are also acquired when the school purchases from competitive exhibitions it sponsors such as the upcoming, "Artists and the Kitchen: New Forms, New Functions." Large scale works in the collection, such as stained glass windows, began as class projects by students learning to handle professional commissions. Finally, a few pieces in the collection were created by student assistants in lieu of their regular duties working for the school.



Arkansas Alpha Dede Dietrich Hutcheson from Fort Smith, Arkansas and Tennessee Gamma Tootie Ronzo Hagerty from Memphis, Tennessee were enrolled in workshops at Arrowmont March 25-29. The ladies took Shibori and Glass Fusing, respectively.



## Barbara Factor Applaudes Arrowmont

**F**or three-time Arrowmont student Barbara Factor the first in a long list of things she enjoys about Arrowmont is the people. You have the fun of sharing and interacting with people who have similar interests to yours. That happens very seldom in real life. Just coming to Arrowmont, you filter down to people who have a real concern for the arts and crafts. I think that's a special situation, and I truly appreciate and enjoy it."

This special situation might explain why a certain weaver once said he teaches at Arrowmont (in tiny Gatlinburg) to escape artistic isolation in Los Angeles! Barbara, who lives in Galesburg, Illinois, told a similar story. "When you work alone in your studio, it's really a very lonely existence. That's why I enjoy coming here. You get to meet other people, maybe you make some friends that you never would have had before. Plus, you get the experience of sharing."

In 1988, after her 20th year as a

professional artist and teacher, Barbara enrolled in her first Arrowmont workshop, a fabric/surface design class. "I decided to live it up by coming to Arrowmont. At that time I applied for a scholarship and received it. It was a real help for me to have that aid, and I truly appreciated it." To this day, she says the 1988 Shibori workshop taught by Seattle's D'Arcie Beytebiere, is one of the best classes she's ever had. "I learned lots, and I still use those techniques in my own classes "

"While I'm here, I see that not only does Arrowmont help people like me, but I see how it filters down through the community. For example, this class I'm taking now, 'Silkscreening On Fabric,' has some local people in it. That's fun because I love learning more about Gatlinburg and the surrounding area....I think that these situations can enhance or change people's lives. It's just as vital to a person who's in college as to somebody who is older and maybe not had as much (art) experience. People have made a decision to come here, so they have interest, but when we get here, the experience is a shot in the arm for everyone. Maybe that's the most special thing about Arrowmont...the energy it generates."

Barbara has chosen Arrowmont over other schools partly because she gets so much for her money. "Every thing (in the fiber studio) is so efficient and so well planned." She insists she can't help but want to work long hours in such a well-equipped and spacious studio. "You can't just sit because you want to take advantage of every minute and of the equipment." This includes an enlarged darkroom and new equipment for making silk screens, which Barbara described as "absolutely wonderful."

"I pick Arrowmont over other schools because I have to think about where my money is going and how I'm using it...I can come here for a week, concentrate, work from 8 until midnight, and probably get as much out of it as in a whole semester at a university. "Plus," added Barbara, "it's nice to be able to look out the window and see the beautiful view of the mountains."

**Barbara Factor of Galesburg, Illinois says the sharing that happens at Arrowmont is one reason she has taken three workshops since 1988. Here she prints yardage with help from two classmates.**





# Community Service

**Colorado Alpha** Andrea Kahn from the **University of Colorado** works as a volunteer at Safehouse, a Boulder, Colorado shelter for women and children who are victims of domestic violence. Andrea serves as a crisis line advocate, answering phone calls from women victims involved in a relationship where abuse is taking place.

**Ohio Etas at Denison University** have been very active in helping out at the Battered Women's Shelter. For the Christmas holiday, the chapter donated a playpen filled with toys for the children. Each member participated by donating toys, and some spent a few hours at the shelter with the women and their children.

**Indiana Eta's** campus and community interest group has established many opportunities for its members to get involved in the community. The interest group has helped raise money for the chapter's local philanthropy, Big Brothers/Big Sisters. The chapter held a bake sale and organized a bowl-a-thon at **Indiana-Purdue University at Fort Wayne** to generate funds for Big Brothers/Big Sisters.

**Iowa Gammas** from **Iowa State University** have been assisting the Meals on Wheels program in Ames, Iowa deliver approximately seventy meals to the needy each day. The meals are prepared at Mary Greely Hospital in Ames, and various churches and volunteer groups, including Pi

Phi, plan and coordinate the delivery of meals to elderly and incapacitated individuals.

Several **Indiana Alphas** were actively involved in supporting the U.S. troops serving in the Persian Gulf. After obtaining addresses through local newspapers, the Pi Phis from **Franklin College** began corresponding with soldiers. Written weekly, the letters were to let the troops know that the Indiana Alphas cared. Many Pi Phis received letters and pictures in return.

**Texas Epsilons** at the **University of North Texas**, who sent gifts and letters to the soldiers in the Persian Gulf, were recently invited to Fort Hood to be honored for their help in Operation Desert Storm.

**Ohio Zeta** Pi Phis and the men of Phi Delta Theta from **Miami University** hosted the second annual relay marathon to raise money for their philanthropies, Arrowmont, the Oxford Learning Center and Lou Gehrig's Disease.

**Oklahoma Alphas** sponsored a five kilometer run benefiting Children's Medical Research. The run was a joint effort of the Pi Phis and Pi Kappa Alphas from the **University of Oklahoma**.

**Michigan Betas** have been collecting socks for the homeless of the greater Detroit area. The socks collect-



The Alachua County Special Olympics were held in northern Florida with events such as the wheelchair race, long jump and 50-meter race. Florida Delta Stacy Fitzgerald was just one of the **University of Florida Pi Phis** who attended the games as a volunteer.

ed from the **University of Michigan** Pi Phis will go directly to those who need them most during the cold Michigan winters.

**Arkansas Betas** Kim Haynie, DeAndra Tate and Shannon Owen from the **University of Arkansas at Little Rock** were part of the Easter Seals telethon in March.

Six **Indiana Epsilons** spent the month of January living in the Appalachian Mountains while volunteering for a work project. The women lived in the Appalachia Service Project Center and worked daily to build a house for an underprivileged single mother and her two small children. They were responsible for putting up dry wall, siding and generally making the house more livable. A **Depauw University** professor served as faculty advisor to the mostly Pi Phi work team which included Indiana Epsilons Madeleine Arnheim, Leigh Gannon, Mila Ott, Stephanie Schmidt, Tonja Sharbo and Carrie Sturrock.

**Virginia Etas** teamed up with members of Phi Delta Theta, Delta Gamma and Alpha Chi Omega for "Jail 'n Bail" to benefit the Leukemia Society. **University of Richmond** students paid ten dollars to have their friends and professors arrested by members of the campus police force. The convicts then had to raise a certain amount of money to be set free. Pi Phis helped raise nearly \$900 for people suffering from leukemia.



**Washington Gamma** Terese Gaddis develops a new friendship at the dance for the elderly in Tacoma. The dance is scheduled to be a regular event for the **University of Puget Sound Pi Phis**.





**California Lambda Loren Davis and Sunshine student Betheny make their way to the next game at the Easter Egg Hunt sponsored by the University of California at Riverside Panhellenic.**

**Montana Alphas** have been involved in a Peer Counseling Group that has been created to educate students in stress management, as well as drug and alcohol abuse. The program has been instituted in the residence halls, fraternity houses and sorority houses at **Montana State University**. Amy Bergsieker is a member of the Peer Counseling Group and gives seminars each week that deal with the education of personal limits of drug and alcohol abuse.

A group of **Tennessee Gammas** got together and distributed games and candy to children at the **University of Tennessee Hospital**. All items given were donated by chapter members.

Tanya Stiers, **Indiana Gamma** from **Butler University**, is active in a new program called Directional Sports. The program motivates children to learn by using sports as an incentive. Fifth grade children spend one hour with a tutor and one hour playing basketball each Tuesday and Thursday afternoon. On Saturday mornings, the children play basketball games. The beginning score for each game is determined by the number of questions that the children answer correctly in dribbling drills prior to the game. During the game if a student makes a basket, he is asked a questions pertaining to something he learned during the week. If the answer is correct, the point counts.

**Texas Epsilons** of the **University of North Texas** are sponsoring a little league softball team of retarded children with the Sigma Alpha Epsilons. Each week they help coach and support the team during their games.

In recognition of Arbor Day, members of **Ohio Alpha** joined with the entire Greek community at **Ohio University** in planting more than 2,500 trees to beautify the Athens, Ohio community. The project, sponsored by the Panhellenic and Interfraternity Councils, was an all-Greek philanthropy in which more than 300 Greeks, including 45 Pi Phis, participated.

Throughout the school year, **Ohio Deltas** at **Ohio Wesleyan University** have been busy with community service projects. Pi Phis went trick-or-treating with members of Sigma Phi Epsilon and collected more than \$200 for UNICEF. In December, members rang bells for the Salvation Army, and the chapter hosted a tea for local senior citizens. In February, Pi Phis provided the publicity for an area Red Cross blood drive.

**Illinois Epsilon** Pi Phis at **Northwestern University** conduct a regular collection of clothing and other goods to service the Evanston and Chicago communities. The chapter holds clothing drives a couple of times each semester. The Polish National Fund receives some supplies as does the Salvation Army.

**Polly Hayes, New York Gamma** and a participant in the Big Brother/Big Sister program at **St. Lawrence University**, plays with her little sister Rachel and friends Louise and Theresa.



**Virginia Gammas** at **William and Mary** are involved in nearly a dozen community service projects. A few of the more popular ones include volunteering at a local mental hospital, helping at the Avalon shelter for battered women, and tutoring reading and math to adults in the Williamsburg area.

**New York Zetas** initiated a new philanthropy in March. The chapter members sold breakfasts to students at **Colgate University** to be delivered by cheerful Pi Phis. Profits were given to the Hamilton Food Cupboard, which supplies food to the less fortunate in the Hamilton area.

**Connecticut Alphas** participated in a canned food sculpture competition during Greek Week at the **University of Connecticut**. The cans used to create the sculptures were donated to the Willimantic Soup Kitchen. Last year, Connecticut Alpha won first prize in a campus-wide can drive.

Easter brought children and fun into the home of the Pi Phis at **Illinois State University**. The **Illinois Iotas** held their annual Easter Egg Hunt and party for 20 alumnae and neighborhood children. Julie Berner organized the afternoon of stories, treats, Easter egg coloring and the Easter egg hunt.

Jenna Culbertson, **Virginia Delta** from **Old Dominion University**, has been the major initiator of a neighborhood watch program. The program is a type of crime prevention program for the neighborhood adjacent to the school.





**Texas Alpha Holly Heath assists children at an Easter Egg Hunt held by the Pi Phis of the University of Texas for the area alumnae and their children.**

**Pennsylvania Etas** and Kappa Delta Rho co-sponsored "Shipwrecked Weekend," a dance marathon at **Lafayette College**. Thirty-three couples braved the experience, pledging to dance for 24 hours. More than \$9,000 was raised for two local charities: The Children's Home of Easton, Pennsylvania and The Spring Gardens School, a low cost day care facility also in the area.

At the **University of California, San Diego** the Pi Phis and Delta Sigma Phi are presenting the second annual Twister Tournament. One-thousand people are expected to attend the event. **California Kappa** is aiming to raise \$5,000 compared to last year's

earnings of \$2,000. All proceeds are donated to Delta Sigma Phi's national philanthropy, the March of Dimes, and Pi Beta Phi's Arrowmont.

**California Iota** helps the community outside of **California State University, Chico** through a Nightwatch program on Halloween night. The project involves making sure neighborhood children are safe while trick-or-treating. The chapter also has an adopted grandmother at a local retirement home. The chapter members visit her regularly.

During Greek Week at **San Diego State University**, a number of **California Epsilons** went to a center

for children in downtown San Diego. The center was started in order to prevent children in the area from getting involved in drugs and gangs. The center offers a number of counseling programs to children feeling the pressure of drugs and gangs in their lives. The Greek members that went to the center helped prepare the center for some landscaping and cleaned much of the inside.

**Texas Gammas** from **Texas Tech** invited children from the Buckner's Baptist Children's Home to accompany them on a spring picnic.

In December members of **Idaho Alpha** worked as giftwrappers to support the Hospice of the Palouse, a local organization which cares for home-bound elderly people.

**Alabama Gammas** from **Auburn University** entertained residents of a local nursing home last semester. Chapter members hosted a game of bingo and provided baked goods and refreshments.

**Connecticut Betas** have been working for the past five months with the Port Sea Shelter, a 15 room facility providing mothers who have lost city funding with three to six weeks of temporary housing while they await approval of state welfare support. Philanthropy chairman Gwynne Keathly has worked closely with the shelter's directors to coordinate events and activities for the women. Events such as a Valentine's Day party, Easter egg hunt and a trip to **Yale University's** Peabody Natural Science Museum have all been sponsored by the Pi Phis.

**New Jersey Alpha** members brought holiday cheer to the residents of Merwick House, a nursing home near **Princeton**, in the form of two large Easter/Passover baskets.



**Louisiana Betas (top) Andrea Adams, Amber Bollinger, Cristin Haake, Alison Gootee, Jolie Laflerur, (bottom) Edy Landreaneau, Shawn Carney, Amy Crawford and Deborah Erny are all members of Scotch Guard, a community service organization affiliated with the Army ROTC at Louisiana State University.**

The Arrow of Pi Beta Phi



## A Salute to the Pi Phi Volunteer continued from page 2

The alumna volunteer is the management consultant, the role model. She is the vivid illustration that fraternity involvement and opportunity continues after graduation and that the values and principles taught have a very real application in the everyday world. While working locally to advise and assist, our individual alumna volunteer works in association, that is, in linkage with others in regional, national and international arenas.

*Newsweek* touted, in an entire issue devoted to volunteers, that our nation's volunteers are "America's Unsung Heroes." And according to Wendy Kanimer, author of a book titled *Women Volunteering*, the "giving" of time all began more than 150 years ago when women first ventured out of their homes and into their communities by volunteering. Pi Phi's service to others began in I.C.'s first year when the Founders provided coal and rent money to a needy family, and the first volunteer service to I.C. was provided when the original members formed a



Robyn Miller and Lorrie Browning are two of the Florida Betas who participated in the March of Dimes Walk-a-Thon. Pi Phis from Florida State University raised more than \$450 toward the prevention of birth defects at the event.

committee to draft a constitution and nominate I.C. Officers. Stemming from that early concept of volunteerism to work for a strong and growing organization came the establishment of Chapter Alumnae Advisory Committees in 1913 and chapter facility volunteers as early as 1892.

Perhaps the responsibilities of the chapter advisor volunteer can best be summarized by the results of a survey by the American College Personnel Association. Undergraduate leaders of chapters ranked important advisor functions as: provide advice; teach techniques of good leadership and fellowship; provide continuity with the history and traditions of the group; help members develop self-discipline and responsibility; help the group observe rules; and supply the organization with information; expert knowledge; and insight gained through experience.

Hundreds of women manage millions of dollars worth of assets for our many Pi Phi chapters. Our House Corporation volunteers manage property to be used as a safe, comfortable meeting place to foster high ideals of friendship among our members, to promote educational and cultural interests, and to foster good qualities of character. House Corporation officer volunteers help build and maintain a positive reputation for the local chapter and for our Fraternity.

Since the inception of the first alumnae chapter in Des Moines, Iowa, in 1882, the alumnae club and faithful member volunteers have given their time freely for the betterment of Pi Phi collegians, alumnae, local community, Settlement School and the national Fraternity.

You, the "active" Pi Phi member/volunteer, are part of the fold which nurtures the thread of friendship and giving which began 124 years ago. The thousands of Pi Beta Phi women, often vastly different in lifestyle and interests, have a very common link, the giving of time and talent to an organization in which they believe. Without

the volunteer, Pi Beta Phi, a non-profit institution, would cease to exist.

Today's Pi Phi volunteers are not simply giving of their time and talents to appease boredom. Our statistics show that most of our volunteers hold jobs and have active families. They come because they value what the group stands for and because they want to contribute to its success. Pi Phi alumnae volunteer their time because they understand the tremendous need and are rewarded for their participation. Working for the Fraternity as an alumna provides an opportunity to learn, to grow and to work with young women who look to them for guidance. The alumnae volunteer has the opportunity to associate with women of all ages and interests.

The enterprise of Pi Beta Phi is strong and stable. It is offering a quality product to an expanding and demanding market. Record dividends are being returned to the volunteers who invest their time and love. The managing, marketing, and publicizing of our product- friendship with all the what-so-evers- is a successful "public business" conducted through the voluntary sector. With the exception of the fifteen Central Office staff members, our organization is run by faithful volunteers from coast to coast.

Pi Beta Phi Fraternity SALUTES its volunteers in every capacity, from the chapter collegiate officer to the national elected officer, who work countless hours and give unselfishly of their time to oversee daily chapter and club operations, property management, marketing, membership recruitment, quality control, group management, research development and return on investment.

YOU, the Fraternity volunteer, are vital.

The 1989-91 Fraternity "Board of Directors," better known in Pi Phi circles as Grand Council, salutes you and THANKS YOU, the Pi Phi volunteer. Together we have our own "Fortune 500" organization- Pi Beta Phi Fraternity.



The **Hinsdale-Naperville Alumnae Club** kicked off Links to Literacy at their March meeting with an array of activities. A six member committee met monthly beginning in September to explore various literacy needs and avenues of involvement for the club's membership. The committee reported its findings by way of a skit, "Three Pi Phis Out to Lunch." It also unveiled a Links to Literacy bulletin board, to be displayed at every meeting, and a plan to build a golden chain of literacy activities each month. The links of the literacy chain will contain the brief written updates of each member's literacy activities, big and small, from the previous month.

Each Hinsdale-Naperville Pi Phi is completing a survey to indicate which literacy activities are most amenable to her interests and time commitment. The club's Links to Literacy Committee serves as a clearinghouse, matching individuals to specific activities in one of three categories: 1) Programs involving training and weekly time commitments, 2) Programs requiring no formal training, and 3) Activities providing literacy materials or funds to local groups. In addition, the committee is organizing one club-wide literacy activity per year, such as establishing a reading area at the local battered women's shelter.

The sweetest reminder of Pi Beta Phi's newest nationally sponsored service project was a Links to Literacy cake, shaped like an open book and trimmed in wine and blue frosting and symbols of the Fraternity.

The **Northern Virginia Alumnae Club** launched their "Links to Literacy" program at their annual January luncheon. The featured speaker was Jeannie Baliles, former First Lady of Virginia and founder and Chairman of the Virginia Literacy Foundation.

Northern Virginia took Mrs. Baliles suggestions and established an Ad Hoc Committee to oversee the Club's involvement in literacy programs. Activities include linking with the Greater Washington Reading Council where Pi Phi efforts will be directed toward collecting books and cassette tapes to be distributed to children in the homeless shelters of Northern Virginia. Members are then volunteering time for reading to these children.

# Links to Literacy

PI BETA PHI FRATERNITY

Diana Long of the De Land Alumnae Club has linked her professional training with literacy tutoring. While completing her Master of Arts in Teaching English, Diana has chosen, for her internship, to tutor a local woman in her thirties who was unable to complete school and, until now, could not read.

After receiving formal training in the Laubach method, Diana has helped her student through basic levels, while reading materials of interest to adults. Diana has also found for herself she is truly committed to becoming a teacher.

The **Windy City Alumnae Club's** contribution to the Chicago Literacy Council's Silent Book Auction this past March helped to make this year's event the most successful in its history. Over 320 people attended the auction, raising an all-time high of \$50,000 for the Council. The top money-making items included: *Little Women* sent by Katherine Hepburn, sold for \$500.00; *In the Arena*, autographed by Richard Nixon, sold for \$750.00; *Remembrance Rock*, autographed by Carl Sandburg, sold for \$800.00; and finally, an authentic foot-



**Many Pi Phis at William and Mary participate in the Rita Walsh Adult Skills Program. Started in 1984, this center uses student volunteers to tutor many local adults. Some adults are trying to get their Graduate Equivalency Diploma while others are learning to read. Pictured is Suzanne McDaniel helping a woman study for her G.E.D. at the Adult Skills Center.**

ball jersey autographed by the spokesperson for the event, Chicago Bears Trace Armstrong, sold for \$500.00.

The Windy City Club made a strong showing of 20 women with the majority being volunteer workers. Their efforts throughout the evening were irreplaceable in helping to monitor the silent auction, sort the books alphabetically, and to collect payments from the winners.

The Literacy Council was very complimentary of all the volunteers, especially in regard to the reliability of the Pi Phi women.

The **California Eta Chapter** became involved in a volunteer program designed to promote literacy in school-age children called "Prime Time Friday Night." This program is held every Friday night from 3 p.m. to 6 p.m. at local elementary schools. "Prime Time" includes such activities as reading games, silent time for reading, and assistance on what to do for those who cannot read. The program was designed to get more children to read rather than watch T.V. on Friday nights. The chapter assists in this program every week and helps run the literary program. Pi Beta Phi was also recognized in a local newspaper for volunteering time to this unique program.

The **Arkansas Alpha Chapter** has collaborated with the Literacy Council of Northwest Arkansas to promote literacy in the area. Approximately forty Pi Beta Phi members have joined the organization which consists primarily of local teachers and education students. The council is currently working with local corporations to create libraries in their factories for employees. The Pi Beta Phis volunteered to hold a book drive, within the house, to collect books to be used in these libraries. VP Moral Carey Doss spoke at the annual winter meeting of the council to present the program. Three hundred and fifty books have been collected by the chapter thus far.

The chapter has also been working with the Ozark Literacy Council which certifies citizens to teach illiterate people to read. The certification process involves a sixteen hour workshop. The chapter has agreed to participate as soon as a convenient time can be arranged. A special workshop for Arkansas Alpha members will be conducted.



# Scholastic Achievement

The following students received a 4.0 GPA for the fall 1990 term.

## Alabama Beta

Rebecca Ard  
Sarah Bisch  
Octavia Howell  
Candace Ford  
Mindy Woods

## Arizona Alpha

Shelley Almquist  
Lisa Colangelo  
Karen Gonsalves  
Denise Hubbs  
Karen Kowalski  
Kymberly Luther  
Suzanne Paisle  
Bannie Redhair  
Marti Riemer  
Cheryl Soukup

## Arizona Gamma

Lori Briggs  
Theresa Bruno  
Sharon Cyprus  
Tamara Dahl  
Molly Dries  
Lisa Leombruno  
Vicki Lindros  
Kim Northrup

## Arkansas Alpha

Jenni Jackson  
Rene Pillow  
Susan Hart  
Shannon Fidler  
Kimberly Hardman  
Tiffany Forsythe  
Erin Shirley

## California Beta

Lynn Stepovich

## California Gamma

Cindy Bond  
Lisa Closson  
Sonya Karpowich

## California Delta

Stacy Ash  
Wady Milner  
Karen Wynn  
Jennifer Burleson  
Dana Carlson

## California Eta

Carrie Aardal  
Nicole Retzier  
Laura Woodruff  
Amy Walthall

## California Theta

Reagan Solt  
Michelle Sommer  
Elizabeth Williams

## California Kappa

Shelley Leeds

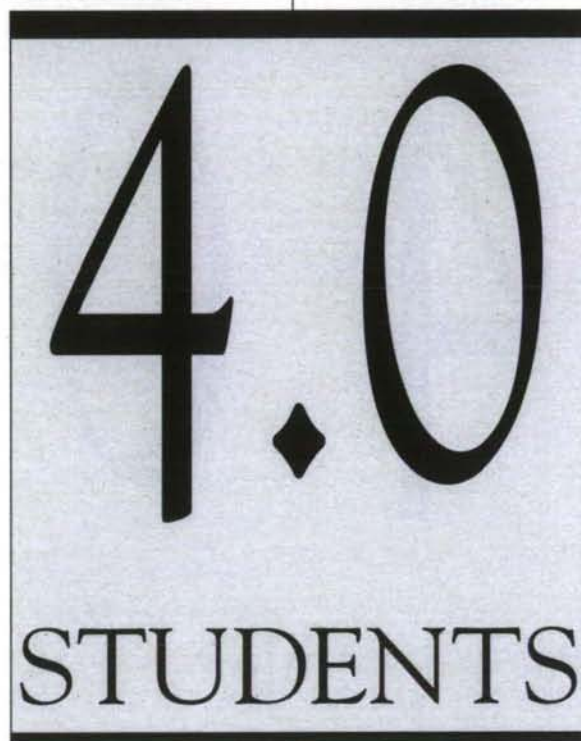
## California Lambda

## Florida Epsilon

Jennifer Blanton  
Sandra Karlow  
Susan Foster  
Paige Lightfoot

## Illinois Epsilon

Marci Bernstein  
Mandy Caesar



Jeanna Consoli  
Lori Lubin  
Amy Hunter  
Ruth Koller

## Colorado Delta

Mary Tess Henchal  
Tracy Schoenebeck  
Kathy Kersting

## Florida Alpha

Jean Estevez  
Jennifer Galbreath  
Rebecca Palmer  
Julie Plocar  
Elizabeth Surratt

## Florida Beta

Kristina Pizzano  
Stephanie Grenti  
Amanda West  
Amanda Mulock

Andrea Picciotti

## Illinois Zeta

LeighAnn Henenway  
Jan Wenning  
Heidi Blunck  
Jennifer Hibbard  
Shala Nicely  
Heather Rosin  
Dena Broughton  
Jennifer Drozd  
Kendra Sharp

## Illinois Eta

Lynn Hewing  
Michele Kufa  
Michelle Marsh  
Mary Ruekert

## Illinois Theta

Sylvia Ahlstrom  
Lisa Barthel  
Mary Doden

Anne Lenac  
Bobbi Saccaro  
Heather Green

## Illinois Iota

Maryrose Beirne  
Cheryl Mizialko  
Michelle Murray  
Amy Troy  
Cindy Vacca  
Lauri Welch

## Indiana Alpha

Trena Paulus  
Jennifer Prall  
Chris Sovich  
Jacqueline Lakes  
Jennifer Miller

## Indiana Gamma

Brenda Bishop  
Lynette Campbell  
Christy Heiskell

## Indiana Delta

Kristin Fendley  
Rebecca Wray  
Kimberly George  
Michelle Hellmann

## Indiana Epsilon

Lynley Chandler  
Jenny Neal

## Indiana Zeta

Kathleen Andrews  
Jennifer Lovell  
Kathleen McDonald  
Sonya Shingier

## Indiana Eta

Angela Hartman

## Iowa Alpha

Stacy Anderson

## Iowa Beta

Julie Johnson

## Iowa Gamma

Natalie VanNote

## Iowa Zeta

Sindy Crockett  
Debora Hollingsworth  
Jennifer Peterson  
Mellisa Polich  
Danielle Singer



**Iowa Eta**

Karen Sorenson  
Kim Zimmerman  
Raquel Reed

**Kansas Alpha**

Michelle Camp  
Audrey Curtis  
Gina Daghestani  
Cristi Kifer  
Mindy Morrison  
Amy Parkerson  
Anne Rickers  
Sarah Thomssen

**Kansas Beta**

Joni Franklin  
Angela Holman  
Kelli McMillen  
Amy Miller  
Shelly Scoby  
Suzanne Smith  
Greta Wiechman  
Catherine Wilson  
Dana Hutchison  
Vicki Ellis

**Kentucky Alpha**

Coleen McFelea

**Kentucky Beta**

Nicole McElwain  
Michelle Craig  
Robin Ruf

**Louisiana Beta**

Shawn Carney  
Erin Haley  
Jolie Fafleur  
Laura Dougherty  
Lisa Frish

**Maryland Beta**

Rachel Bell  
Melanie Mealy  
Claire Powell  
Catherine Zimmerman

**Michigan Alpha**

Mary Gillis  
Colleen Graf  
Laura Kreider  
Jen Sanderson  
Colleen Sheridan  
Jen Wallman

**Michigan Beta**

Amy Darby

**Minnesota Alpha**

Shelly Bauer  
Amy Fransen

**Mississippi Alpha**

Susie Penton  
Lisa Hutchinson  
Merrin Morgan

**Mississippi Beta**

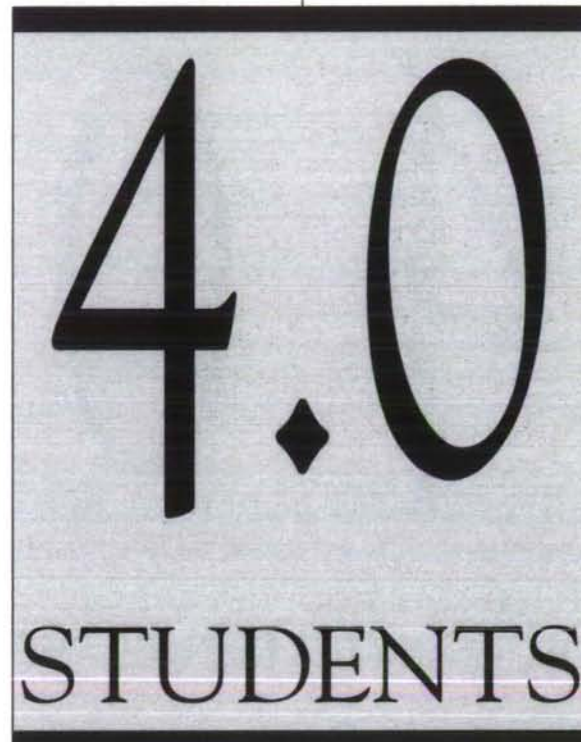
Nichole Bassett

**Montana Alpha**

Brita Abrahamson  
Tracie Davies  
Kathy Comes  
Joanie Curry  
Lynn Maulding

**Nebraska Beta**

Nicole Austin  
Marianne Hallinan  
Renee Pletka



Angie Brown  
Kelly Davis  
Alice Eilers  
Suzanne Malone

**Missouri Alpha**

Laura Buschman  
Julie Jurgensmeyer  
Missy Matthews  
Karla Schmitt  
Kristan Mont  
Robin Hinton  
Chris Jeffress  
Gina Tamborella  
Stephanie Kinkead  
Elizabeth Westling

**Missouri Gamma**

Stephanie Chapman  
Julie Collins  
Allyson Evans  
Suzanne Seaman  
Julie Oelklaus  
Julie Michel  
Lynn Haas

Kerry Bonge  
Sarah Peterson  
Tina Timmerman  
Jennifer Davis  
Jane Gleason  
Stephanie Holsten  
Kelly Palmer

**Nevada Alpha**

April Pacini  
Megan Kelly  
Becky Baldwin

**New Jersey Alpha**

Tracy DeBlicke  
Natasha Kablaoui

**New Mexico Alpha**

Sara Browning

**New Mexico Beta**

Tomasita Murphy  
Keather Pharr  
Kim Scorch

Jill Underwood  
Cindy Cox

**New York Gamma**

Vicki Gregory

**New York Epsilon**

Susie Sirota  
Louise Modich  
Joanne Foley

**New York Delta**

Ainslee Haffner  
Jackie Schulman  
Paula Zook

**North Dakota Alpha**

Angie Elsperger  
Krista Lunde  
Suzanne Orstad  
Tara Miller  
Tanya Scheeler  
Kyler Twine  
Shelly Huber

**Ohio Alpha**

Sabrina DeLibera

**Ohio Beta**

Julie Dickhart

**Ohio Delta**

Melissa Aylsworth  
Laura Landy  
Jennifer Meyers  
Suzanne Osborn  
Carolyn Svetz

**Ohio Epsilon**

Nicole Jenkins  
Christina Kremer

**Ohio Zeta**

Tracy Chase  
Erin Kennelly

**Ohio Theta**

Cassandra Luedecke  
Jennifer Sidebottom  
Amy Shipman

**Ohio Iota**

Terri Blankenheim  
Kelle Caldwell  
Lori Feldhouse  
Kristin Hokanson  
Lisa Labrador  
Christine Mihaly  
Julie Monnin



Therese Reardon  
Jenny Sand  
Christine Truax  
Karen Whalen

### Oklahoma Alpha

Lesley Beard  
Stacey Corlett  
Tiffany Craig  
Kristin Erdman  
Denise Reed  
Janet Walsh  
Laurel Cockrill  
April McCurdy  
Amy Monsour

### Oklahoma Beta

Jennifer Ames  
Julie Wood  
Emilie Coffey  
Jennifer Thomason  
Tara Hass  
Tracy Hass  
Katie Hubbard  
Jenny Nickles  
Sarah Shirley

### Oregon Alpha

Gretchen Stark  
Susan Parker

### Oregon Beta

Kristen Hoffbuhr  
Ann Marie Rettig  
Theresa Otley  
Katy Patrick

### Oregon Gamma

Ashley Boyd  
Cinda St. John  
Amy Stuart  
Lisa Smith  
Kim Coghlan

### Pennsylvania Beta

JoAnn Talbot  
Sydney Johnson  
Christin Dood  
Susan Corridoni  
Wendy Locke

### Pennsylvania Gamma

Karen Shaefer

### Pennsylvania Zeta

Shannon Elby  
Kelly Veria

### Pennsylvania Eta

Marianne Bellino  
Christy H. Chandler

### Pennsylvania Theta

Jennifer Holefelder  
Jennifer Strony  
Michele Coyne  
Katherine Geoghegan  
Wendy Messina

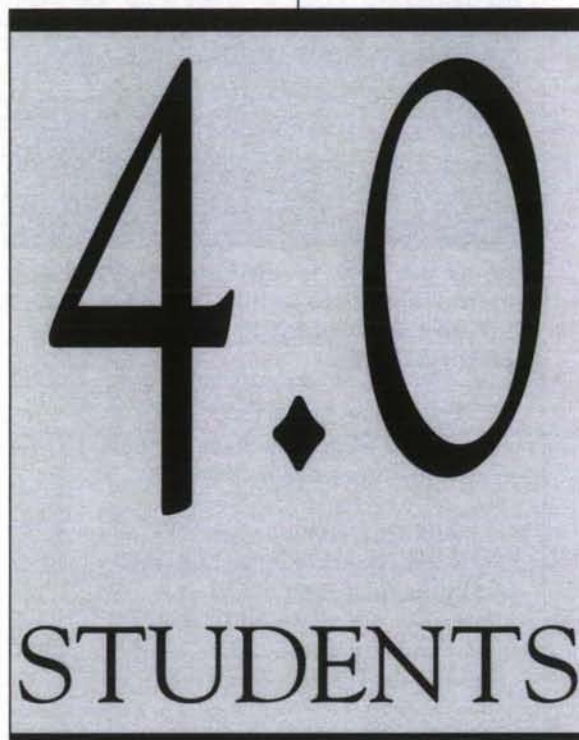
### South Carolina Beta

Alethea Orfanedes  
Laraine Orfanedes

Kendall Graham  
Sarah Lenhart  
Heather McLemore  
Shannon Phillips  
Ashley Smith  
Kathleen Winslow  
Catherine Young

### Texas Beta

Kellie Anne Coston  
Janna K. Jones  
Debra L. Kading



### South Dakota Alpha

Marcy Brunskill  
Sarah Hirsch  
Bonnie Jorgenson  
Laura Krier  
Dana Olson  
Julie Roberts  
Nichol Wilson

### Tennessee Gamma

Susan L. Dominick  
Stephanie W. Orman  
Carla Thorton  
Linda Ward

### Tennessee Delta

Elizabeth Fowler  
Ashley Goetz  
Paige Graves

### Texas Alpha

Laura Bain  
Carrie Brooks

### Texas Epsilon

Stacy Dupler  
Julie Jenner  
Missy Jensen  
Stacey Lederer  
Dawn Metcalf  
Jane Pullman

### Texas Eta

Kimberly Allen  
Amy Pohl

### Virginia Gamma

Mary Quagliano  
Colleen Bellamy

### Virginia Delta

Christine Andrews  
Lori Alusted

### Virginia Zeta

Catherine Leonard

### Virginia Eta

Sally VanOrden

### Washington Beta

Bonnie Hilden  
Wendy Smith

### West Virginia Alpha

Sarah McKenney  
Dayna Mitrick  
Elizabeth Pell  
Kristy Stemple  
Deirde Yauch

### Wisconsin Alpha

Sarah Nehls  
Kristine Simonson

### Wisconsin Delta

Lee Anne Neumann

### Wyoming Alpha

Kari M. Morgan  
Christine Kochmann



# Collegiate News

Three **Oregon Gammas** were active in **Willamette University** cheerleading this past year. Sophomores Amy Ellsperman, Carla Poindexter and Winona Zeffiro encouraged Willamette athletes in a variety of sports.

**New York Zeta** is proud to have five Gate Keepers, or **Colgate** tour guides. Lenore Henault, Beth Mazzei, Lisa Thompson, Lauren Shanahan and Lisa Natkin volunteer one hour a week to lead prospective students around the campus and give them a flavor of Colgate student life.

**Michigan Alpha** Jennifer Wallman was recently recognized by the faculty of **Hillsdale College** and Omicron Delta Kappa leadership honorary as the recipient of one of two Outstanding Sophomore Awards presented at the annual Hillsdale College Honors Assembly.

In February **Ohio Wesleyan University** sponsored their fifth annual Ebony and Ivory Weekend. This is a time to promote diversity and unity among students, especially Greeks, of differing racial backgrounds. **Ohio Deltas** participated in many of the events, which included a dinner reception, banner competition, talent show, and a service project.



**Washington Beta Amy Raekes** was chosen **Outstanding Greek Woman on Campus for Washington State University**.



**Louisiana Betas** teamed up with **Phi Kappa Psi Fraternity** for **Louisiana State University's** annual Songfest competition and went away with the Sweepstakes trophy. **Pi Phis Pam Henkel, Rachel Saaks and Mary Bearden** perform "Elvira."

**Tennessee Delta** Emily Harris is a member of **Memphis State's** champion Pom Pon squad for 1991.

**Michigan Betas** had an educational talk on AIDS at the **University of Michigan** chapter house. It was an informative meeting with an AIDS victim and professional AIDS counselors on hand to answer questions.

**Ohio Alpha** Marcie Keifer was named to the first team All-American during NCAA swimming championships in March. Marcie, a sophomore at **Ohio University**, finished 12th in the 200 meter relay, helping her team place 16th overall.

Jennifer Butler, **Illinois Theta**, received an award for highest ranking Greek in the **Bradley University** College of Engineering. The Illinois Theta Chapter placed second on campus for GPA.

**Indiana Gamma** Jodi Carlton has been on the sports medicine staff at **Butler University** for two years. In those two years Jodi has put in more than 1000 hours in athletic training. Her responsibilities include prevention of injuries through bracing and taping, nutrition education, weather monitoring to determine if heat and humidity levels make practice dangerous, and attending all practices and games. She has worked with cross country, tennis,

volleyball, softball, baseball, track and field, and football teams at Butler.

**Indiana Gamma** has three new initiates who participate in **Butler** varsity sports. Shelly Hilary is a member of the swim team and swims the 100 and 200 backstroke, the 500 freestyle and the mile. Susan VanWilligan is the starting centerfielder for the Bulldog softball team. Jama Schitter plays number four singles and is number one doubles player for the Butler tennis team.

Three **Montana Alphas** were selected as Orientation Leaders for the 1991 summer term. Lee Anna Irvine, Jennifer Helvick and Kim Lewis will be assisting incoming freshmen with class registration, campus tours and general questions about campus life at **Montana State University**.

**Tennessee Gamma** celebrated Founders' Day at Arrowmont. This year the ceremony was extra special because each active was given the name and address of a Tennessee Gamma alumna to write and ask for any special Pi Phi memories, comments on being an alumna, or chapter history they wished to share with the chapter. The **University of Tennessee** alumnae responses were shared with all present for the event.





**California Delta Lisa Morgan is Miss Illinois-USA. She participated in the Miss USA 1991 pageant and placed sixth overall.**

**Montana Alpha** Chapter placed first in grades among the five sororities at **Montana State University**. Montana Alpha also has the distinction of being the only sorority to consistently improve their grades for five quarters in a row.

Coleen McFelea of **Kentucky Alpha** was recipient of the award for the sophomore with the highest cumulative GPA at the **University of Louisville**.

The **Nebraska Beta** Chapter was awarded the Madeline Girard Philanthropy Award for the 1990-91 scholastic year at the **University of Nebraska**. The award was established by the Panhellenic Association to designate a chapter which has contributed to the campus and community in creative and positive ways through the chapter's philanthropy program.

**Tennessee Gamma** Laura Painter is one of three **University of Tennessee** students on the Student Publications Board. Her duties include helping to choose an editor for the school newspaper and overseeing other student publications.

Two of **Virginia Eta's** seniors have been named recipients of campus-wide honors at the **University of Richmond**. Amy Eisenhour was elected female Greek contributor of the year

and Elizabeth Earle was named female contributor of the year.

**Oklahoma Beta** Monica West is a member of the **Oklahoma State Varsity Cheerleading Squad**. The squad competed at the National Collegiate Cheerleading Championships and won first place.

**Oklahoma Betas** Amy Wilsey and Jami Zirkle were both honored as two of the Top Ten students in the Arts and Sciences College at **Oklahoma State University**.

**Arizona Betas** at **Arizona State University** are sponsoring a local Little League team. The sponsorship not only involves financial support, but moral support as well.

**Mississippi Beta** Virginia Peppiatt arranged for the chapter at the **University of Mississippi** to participate in an etiquette class. A representative from the Graces Course came to speak to the chapter on proper etiquette. She discussed topics such as formal events, evening wear, proper introductions, correspondence and table manners.

In April, **Indiana Epsilon**, in conjunction with the **DePauw University** chapter of Sigma Alpha Epsilon, held a date rape seminar. The seminar was to promote awareness of the issue and help with the prevention of date rape on the DePauw campus.

Jada Kohlmeier, **Kansas Beta** Chapter President, was chosen by the Panhellenic Council to serve on an

**The 1991 Executive Council for Texas Gamma** went on a retreat to Palo Duro Canyon. **Texas Tech Pi Phis** (front) Shelley Brownlee, Melynda Nesbitt, Kristine Martin, Maria Russell, (middle) Tracy Logsdon, Julie Arnold, (back) Melissa Williams, Lynn Orsini, Daun Tennell, Lori Knight, Lauren Gross and Aryn White enjoyed making preparations for the coming year.



alcohol policy task force committee. The committee consists of seven members from different sororities on the **Kansas State University** campus. The group has researched many different policies and will be proposing an alcohol policy to be used by the entire Greek system.

**Oklahoma Alpha** hosted two Japanese exchange students this spring who were at **Oklahoma University** finalizing an intensive eight year English program. Aside from attending English classes at O.U., the two women studied American history, art and culture. The women stayed at the Pi Phi house for three weeks.

In early February, **Missouri Gammas** Jill Bright and Annee Peters were honored as attendants of the 1991 Homecoming Court at **Drury College**. Both women were elected by the Drury College student body.

**Indiana Alphas** at **Franklin College** were the hostesses of Indiana State Day. Pi Phis from Indiana gathered in Franklin to share news and ideas as they celebrated Founders' Day. The day's featured speaker addressed the growing problem of illiteracy.

Shannon Jones of **Indiana Eta** attended the Indiana Forensics Championships representing **Indiana-Purdue University at Fort Wayne**. She received third place in Rhetorical Criticism and fifth place in the Informative category. Shannon is now qualified to compete at the National Forensics Championships to be held in Huntington, West Virginia.





**Washington Gamma Kristin Andonian, from the University of Puget Sound, traveled to DePauw University to attend the seventeenth annual DePauw National Undergraduate Honors Conference. This conference is one of the most respected communications conferences in the United States.**

Seven **Wisconsin Alphas** were chosen as Rho Chis or rush counselors for the 1991 Rush at the **University of Wisconsin**. Those selected are Kendra Heenan, Melissa Tifford, Melanie Schneider, Michelle Labow, Amy Pesch, Heidi Snyder and Lori Skedelsky.

At the beginning of the spring semester, four **Illinois Etas** were elected to **Millikin University's** Panhellenic Council. Jenny Master was elected the council's president; Katie Durham secretary; Carrie Umlaf, public relations chairman; and Jennifer Stocks, social chairman.

Seven members of **Illinois Eta** were selected to serve as counselors for the **Millikin University** freshmen camp. The Millicamp counselors selected were Sue Hope, Lynn Hewing, Jenny Masters, Trisha Darrah, Shalise Golden, Shelly Peters and Angie Snellenberger. The seven women will be a part of the 50 member group which will help incoming students prepare for college at a two-day camp.

In response to a large demand, the **University of Colorado** Panhellenic

## Pi Phi Collegian Travels to White House for Interfraternity Briefing

Maryland Beta Donna Goffredo attended a White House briefing on April 5, 1991, highlighting the interfraternity effort toward philanthropy, underage drinking control and drug abuse elimination. Organized by the Fraternity Executives Association, groups represented at the briefing were undergraduate students from international/national college fraternities and sororities. Speakers included Governor Bob Marinez, Director of the Office of

National Drug Control Policy; C. Greg Petersmeyer, Deputy Assistant to the President and Director of the Office of national Service; Dr. Antonia C. Novello, U.S. Surgeon General; and Charles E. Kolb, Deputy Assistant to the President for Domestic Policy. In his speech, "Drug Czar" Martinez challenged the audience to help fight against drug abuse. "Drug prevention is work that never ends. The nation's youth are constantly being replenished from below. And they are statistically the age group most at risk of drug use. Most of all, please help us help them." Dr. Novello has dedicated her term of service to combating underage drinking in schools. Her efforts with beer distributors to limit access to alcohol during traditional Spring Break met with great success.

and Interfraternity Councils have resurrected their Greek yearbook. Formerly named The Legacy, the new book will contain original theme ideas and cover design. **Colorado Alpha** Kristin Yantis has been named assistant editor of the new publication.

**Missouri Beta** Kimberly Link of **Washington University** received a Fulbright scholarship to teach English conversation to high school children in France for the 1991-92 academic year. The program is designed to increase mutual understanding between the people of the United States and those of other countries.

The **Michigan Gamma** Chapter was recently honored for outstanding scholarship at **Michigan State University**. Of the eighteen sororities on campus, Pi Phi received the highest GPA for the fall term. The chapter carried a 3.12 average.

Recent student government elections at **Washington and Jefferson College** placed **Pennsylvania Zeta** Julie Grebenz in the position of vice president. Julie will run the general assembly meetings which are held biweekly and is in charge of a subcommittee.

This spring **Alabama Gammas** held Health Awareness Day in order to promote the health and well-being of its members. Booths were set up in the chapter room at **Auburn** and the members were able to browse and ask

questions on health and beauty tips. Skin and fitness were the main subjects of questions.

Three members of **Alabama Gamma**, Wendy Francis, Holly Kendrick and Mandy Payne were recently selected for Angel Flight. This group works with the college Air Force program providing service to the **Auburn** campus and community.



**Debbie McFarlane, Idaho Alpha, carries the ball for a touchdown. Last fall Idaho Alpha won the intramural football championships at the University of Idaho**



**Connecticut Beta** Samantha Lincoln is an outstanding track athlete at **Yale University**. Not only did she routinely place through the season in meets, she currently holds three Yale women's records for her 1990 performances in both indoor and outdoor triple jump and indoor long jump.

**Washington Alpha** held its first "Recognition Dinner" at the end of April. The purpose of the dinner is to recognize those individuals who have invested considerable time and energy in volunteer work, campus activities, jobs, in-house activities and sports, as well as those who have won scholarships or awards at the **University of Washington**.

Sixteen members of **Washington Beta** made the President's Honor Roll for the fall 1990 semester at **Washington State University**: Wendy Smith, Tamara Dissmore, Karen Green, Jennifer Gallucci, Coleen Altig, Natalie Channing, Nancy Clark, Amy Raekes, Debbie Booth, Julie Trull, Jennifer Holeman, Carol Kutch, Wendy Campbell, Shannon Jenney, Nicole Adkins, Trina Hess.

**Texas Epsilon** placed third in grades at the **University of North Texas**.



Iowa Zetas Vicky Smith, Allison Faber and Gina Harms are members of the University of Iowa Pom Pon squad. The three Pi Phis had the honor of attending the Rose Bowl to cheer for their team.

In February, the **Florida Delta Chapter** held their Parents' Weekend. Linda Calderon (center) enjoyed having her father, Henry Calderon and mother, Maria Calderon visit her at the University of Florida.



**Idaho Alphas** Georganne Stone and Cori Stanaway were elected to the **University of Idaho's** Panhellenic Council. Their installation was held March 12 and their term of office is one year. Georganne is the new Panhellenic Vice President, while Cori will serve as the IFC Representative and Greek Week Chairman.

**Missouri Alpha** is pleased to have the highest number of Panhellenic Council members at the **University of Missouri** this year. Jenny Guinan is the liaison between the Residence Hall Association and Panhellenic. Michelle LaForge is the co-coordinator of G.E.A.R.S. (Greek Early Advisement Referral System). Michele Yansen is the Panhellenic Rush Chairman.

Michelle Tarantino, **California Iota**, currently holds the office of vice president of programming for **Chico State's** Panhellenic Council. She

organized an alcohol and drug awareness week on campus.

**California Iota** Chapter had the highest GPA of the seven Panhellenic groups on the **Chico State** campus.

Three **Iowa Etas** help boost spirits at **Drake University** sporting events. Dana Imlay and Jennifer Miner are members of the cheerleading squad, while Michele Gierut has been a member of the Pom Pon squad for three years.

Sharon Mattingly and Kim Smith, both **Ohio Iotas**, are members of the **University of Dayton** cheerleading squad. Kim, a senior, was recently named captain of the squad.

**New Mexico Betas** were awarded a certificate for outstanding participation in Panhellenic meetings at **New Mexico State University**.

## Financial Excellence

The following collegiate chapters have maintained outstanding financial cooperation for the 1990-91 school year. The Chapter Treasurers of these chapters are eligible for the Olivia Smith Moore Award for the Chapter Treasurer who has best fulfilled the requirements of her office.

Florida Epsilon  
Idaho Alpha  
Illinois Eta  
Illinois Iota  
Illinois Theta  
Indiana Alpha  
Iowa Beta  
Kentucky Alpha  
Minnesota Alpha

North Carolina Beta  
Oregon Beta  
Pennsylvania Eta  
Pennsylvania Gamma  
Texas Beta  
Texas Epsilon  
Texas Eta  
Texas Gamma  
Virginia Eta



# Rush Information Form (RIF)

(To be used by alumnae members only)

## DIRECTIONS FOR USE:

1. Please see instructions on page 33.
2. Please send the RIF early. Be sure it is completed. Send a picture of rushee, if possible.

Name of Rushee \_\_\_\_\_ Attending \_\_\_\_\_ College \_\_\_\_\_

Home Address \_\_\_\_\_  
Street City State Zip

Year in College:  Freshman  Sophomore  Junior  Senior

High School attended: \_\_\_\_\_  
Name City State Zip

Class Size \_\_\_\_\_ Rank \_\_\_\_\_ GPA \_\_\_\_\_ SAT/ACT (if known) \_\_\_\_\_

Parent or Guardian \_\_\_\_\_

Pi Beta Phi Relatives \_\_\_\_\_  
(sister, mother, grandmother)

Other Greek Affiliated Relatives \_\_\_\_\_

Please check ONE of the following:

Known personally by an alumna (if so, how long?) \_\_\_\_\_

Only factual information found. Source of information \_\_\_\_\_

Other \_\_\_\_\_

Please check ONE of the following:

Wish to recommend

Do not wish to recommend

Alumnae Club \_\_\_\_\_

Signed \_\_\_\_\_

Alumnae Club Rush Information Chairman  
and/or Individual Pi Beta Phi Alumna

Address \_\_\_\_\_  
Street City State Zip

Telephone \_\_\_\_\_ Date \_\_\_\_\_  
Area Code Number

LIST SCHOOL AND COMMUNITY ACTIVITIES AND HONORS: (Attach another sheet if needed.)  
Comment on special interests, talents, leadership qualities, personality.



# 1991-92 Rush Directory

## How Alumnae Can Help

1. Fill out a Rush Information Form (RIF) on any prospective rushee you wish to sponsor for membership in Pi Beta Phi. See form in this magazine. The form may be copied or additional forms are available from Central Office, 7730 Carondelet, Suite 333, St. Louis, MO 63105
2. Return the completed form directly to the Chapter Membership Chairman of the appropriate chapter.
3. Although only one RIF is needed for each rushee, letters are welcome from all alumnae who may wish to write.
4. If you know of a legacy going through rush, please fill out a Legacy Introduction Form found on page 41. The Legacy Introduction Form **DOES NOT** take the place of a RIF.

## Chapter Membership Chairmen For 1991-92 Rushing Season

<i>Chapter &amp; School</i>	<i>Name of Chapter Membership Chairman</i>	<i>School Address of Chapter Mem. Chrm.</i>	<i>Summer Address of Chapter Mem. Chrm</i>	<i>Dates of Major Rush</i>
Alabama Alpha Birmingham-Southern College	Angela C. Newton	<b>ALABAMA</b> PO Box A-59 BSC Birmingham, AL 35254	2018 Eugenia Ave. NW Cleveland, TN 37311	August 23-29
Alabama Beta University of Alabama	Alisa Dawn Singletary	PO Box BP Tuscaloosa, AL 35486	514 Thirteenth Ave. #6 Tuscaloosa, AL 35401	August 12-18
Alabama Gamma Auburn University	Jennifer L. Smith	Boyd Hall Auburn, AL 36830	745-D W. Glenn Auburn, AL 36830	September 15-21
Arizona Alpha University of Arizona	Ann N. Fallgren	<b>ARIZONA</b> 1035 N. Mountain Ave. Tucson, AZ 85719	6620 Via Siena Rancho Palos Verdes, CA 90274	August 9-17
Arizona Beta Arizona State University	Missy McCarty	Palo Verde Main, Wing C.A.S.U. Tempe, AZ 85281	8636 N. Avenida del Sol Paradise Valley, AZ 85253	August 11-17
Arizona Gamma Northern Arizona University	Janis Homes	NAU Box 6036 Flagstaff, AZ 86001	331 W. Las Palmaritas Drive Phoenix, AZ 85021	August 21-25
Arkansas Alpha University of Arkansas	Brooke Terrell	<b>ARKANSAS</b> 502 W. Maple Fayetteville, AR 72701	610 Thistlewood Houston, TX 77079	August 20-25
Arkansas Beta University of Arkansas at Little Rock	Shanie Guyot	3117 S. Taylor Little Rock, AR 72204	2321 Dewitt Henry Dr. Beebe, AR 72012	September 12-15
California Alpha Stanford University	Dionn M. Stewart	<b>CALIFORNIA</b> P.O. Box 11097 Stanford, CA 94309	P.O. Box 11097 Stanford, CA 94309	April 1992
California Beta University of California (Berkeley)	Katherine Raffetto	2325 Piedmont Ave. Berkeley, CA 94704	3641 E. Lincoln Ave. Sacramento, CA 95818	August 18-24



<i>Chapter &amp; School</i>	<i>Name of Chapter Membership Chairman</i>	<i>School Address of Chapter Mem. Chrm.</i>	<i>Summer Address of Chapter Mem. Chrm.</i>	<i>Dates of Major Rush</i>
California Gamma University of Southern California	Kristina Matthews	667 W. 28th St. Los Angeles, CA 90007	2521 Avenita Alpera Tustin, CA 92680	August 1991
California Delta University of California (Los Angeles)	Debi Di Bias	700 Hilgard Ave. Los Angeles, CA 90024	1247 Olive Lane La Canada, CA 91011	September 20-27
California Epsilon San Diego State University	Tamara Darst	5080 College Place San Diego, CA 92115	9929 Rio San Diego Dr. #35 San Diego, CA 92108	August 15-22
California Zeta University of California (Santa Barbara)	Liesl Rohlfing	763 Camino Pescadero Goleta, CA 93117	763 Camino Pescadero Goleta, CA 93117	September 3-8
California Eta University of California (Irvine)	Julie A. Feldstein	64 Berkeley Ave. Irvine, CA 92715	8 Russell Court Irvine, CA 92715	September 10-16
California Theta University of California (Davis)	Christine D. Kilcline	445 Russell Blvd Davis CA 95616	2477 Sycamore Lane Apt. C-4 Davis, CA 95616	September 30
California Iota California State University, Chico	Holly Meegan	413 W. 4th Street Chico, CA 95928	3200 Serra Court Fairfield, CA 94533	August 30- September 5
California Kappa University of California (San Diego)	Nina Takesh	7700 Regents Rd. Station 113-238 San Diego, CA 92122	545 Amphitheatre Drive Delmar, CA 92014	October 4-8
California Lambda University of California (Riverside)	Vasi Alevras	3429 Canyon Crest #1D Riverside, CA 92507	11646 Largo Ct. Loma Linda, CA 92354	September 23-28
Colorado Alpha University of Colorado	Ashlee Sallee	<b>COLORADO</b> 890 11th Street Boulder, CO 80302	P.O. Box 17697 Boulder, CO 80308-7697	August 25- September 1
Colorado Gamma Colorado State University	Carolyn Linden	625 West Lake Street Ft. Collins, CO 80521	3070 Windjammer Dr. Colorado Springs, CO 80920	August 22-26
Colorado Delta Colorado School of Mines	Julie D. White	1018 12th St. Golden, CO 80401	7726 Litchfield Lane Spring, TX 77379	August 18-23
Connecticut Alpha University of Connecticut	Christina DeAmicis	<b>CONNECTICUT</b> 11 Gilbert Road Storrs, CT 06268	378 Fabyan Rd. N. Grosvenardale, CT 06255	September 16-20
Connecticut Beta Yale University	Alice Valsecchi	Box 2319 Yale Station New Haven, CT 06520	10 Boston Street Torrington, CT 06790	January 1992
Florida Alpha Stetson University	Brandice Davidson	<b>FLORIDA</b> Box 8237 Stetson University DeLand, FL 32720	3661 Barbary Drive Tallahassee, FL 32308	September 1991 January 1992
Florida Beta Florida State University	Emily S. Goler	519 W. Jefferson Street Tallahassee, FL 32301	10885 NW 4th Street Coral Springs, FL 33071	August 19-25



<i>Chapter &amp; School</i>	<i>Name of Chapter Membership Chairman</i>	<i>School Address of Chapter Mem. Chrm.</i>	<i>Summer Address of Chapter Mem. Chrm.</i>	<i>Dates of Major Rush</i>
Florida Delta University of Florida	Angel Lee	1152 E. Panhellenic Dr. Gainesville, FL 32601	304 Worley Way Perry, FL 32347	August 19-24
Florida Epsilon University of Central Florida	Tara M. McIntyre	4304 Greek Park Drive Orlando, FL 32816	4304 Greek Park Drive Orlando, FL 32816	August 12-17
<b>GEORGIA</b>				
Georgia Alpha University of Georgia	Rachel Whatley	886 S. Milledge Avenue Athens, GA 30605	829 Edward Place Macon, GA 31204-1206	September 5-15
<b>IDAHO</b>				
Idaho Alpha University of Idaho	Leigh Ann Williams	507 Idaho Avenue Moscow, ID 83843	3433 10th Street Lewiston, ID 83501	August 14-18
<b>ILLINOIS</b>				
Illinois Alpha Monmouth College	Janet Cassiday	Monmouth College Box 131 Monmouth, IL 61462	1114 Alder Lane Mt. Prospect, IL 60056	August 27-31
Illinois Beta-Delta Knox College	Stacy Bray	Knox College Box 1637 Galesburg, IL 61401	57 Ellen Drive Chicago Hts., IL 60411	January 9-12, 1992
Illinois Epsilon Northwestern University	Elizabeth Wallace	636 Emerson Evanston, IL 60201	1046 Michigan Wilmette, IL 60091	January 5-9, 1992
Illinois Zeta University of Illinois	Susan Quinlan	1005 S. Wright St. Champaign, IL 61820	1N115 Partridge Drive Carol Stream, IL 60188	August 23- September 3
Illinois Eta Millikin University	Rachel Hampton	235 N. Fairview Decatur, IL 62522	416 Park Lane Herrin, IL 62948	August 26-31
University Theta Bradley University	Jennifer Nolting	1004 N. Institute Pl. Peoria, IL 61606	1520 Heather Hill Circle Flossmoor, IL 60422	August 25-30
Illinois Iota Illinois State University	Julie Berner	709 West College Ave Normal, IL 61761	606 Park Drive Flossmoor, IL 60422	August 17-27
<b>INDIANA</b>				
Indiana Alpha Franklin College	Cristi Richards	Franklin College Elsey Hall Franklin, IN 46131	887 Vernon Drive Greenwood, IN 46143	August 31- September 6
Indiana Beta Indiana University	Stephanie Mueller	928 E. Third Street Bloomington, IN 47401	16 Mayfair Lane Lincolnshire, IL 60069	Oct., Nov. 1991 January 1992
Indiana Gamma Butler University	Brenda Bishop	831 W. Hampton Indianapolis, IN 46208	831 W. Hampton Indianapolis, IN 46208	August 20-24
Indiana Delta Purdue University	Leslie Emerich	1012 State Street West Lafayette, IN 47906	195 Lexington Drive Zionsville, IN 46077	Oct., Nov. 1991 January, 1992
Indiana Epsilon DePauw University	Kathryn Tweedy	303 S. Locust Greencastle, IN 46135	7416 Shannon Circle Edina, MN 55439	October 10-13
Indiana Zeta Ball State University	Andrea Clark	Suite 316, Rogers Hall Muncie, IN 47306	1517 Gibson Avenue Indianapolis, IN 46219	September 6-16
Indiana Eta IN-Purdue University at Ft. Wayne	Shannon Jones	2101 Coliseum Blvd Ft. Wayne, IN 46805	3324 Sequayah Pass Ft. Wayne, IN 46806	September 8-15



<i>Chapter &amp; School</i>	<i>Name of Chapter Membership Chairman</i>	<i>School Address of Chapter Mem. Chrm.</i>	<i>Summer Address of Chapter Mem. Chrm.</i>	<i>Dates of Major Rush</i>
Iowa Alpha Iowa Wesleyan University	Kendra Van Maanen	<b>IOWA</b> S-T Hall Box 29 Mt. Pleasant, IA 52641	R.R. 1 Box 81 Grinnell, IA 50112	September 1991
Iowa Beta Simpson College	Shae Gorman	406 North Buxton Indianola, IA 50125	15800 Normandy Lane Minnetonka, MN 55345	August 26-29
Iowa Gamma Iowa State University	Wendy Gee	208 Ash Ave. Ames, IA 50010	723 Greenfield St. NE Cedar Rapids, IA 52402	August 20-25
Iowa Zeta University of Iowa	Tina Casteel	815 E. Washington Iowa City, IA 52240	440 Westport Rd. NW Cedar Rapids, IA 52405	August 21-27
Iowa Eta Drake University	Susan Bieganowski	1219 34th St. Des Moines, IA 50311	630 E. 158 St. Harvey, IL 60426	August 30- September 8
Kansas Alpha Kansas University	Stacie Porto	<b>KANSAS</b> 1612 W. 15th Lawrence, KS 66044	1201 Yale Place #1506 Minneapolis, MN 55403	August 15-21
Kansas Beta Kansas State University	Linn Lundgrin	1819 Todd Road Manhattan, KS 66502	1111 Vattier Apt. 2 Manhattan, KS 66502	August 14-19
Kentucky Alpha University of Louisville	Jill E. Dorsett	<b>KENTUCKY</b> 2030 Confederate Place Louisville, KY 40208	7713 Charron Ct. Louisville, KY 40220	August 20-24
Kentucky Beta University of Kentucky	Jill M. Brady	409 Columbia Ave. Lexington, KY 40508	409 Columbia Ave. Lexington, KY 40508	August 17-23
Kentucky Gamma Eastern Kentucky University	Christine D. Gongola	Telford Box 439, EKU Richmond, KY 40475	R.R.#4 Box 161 Wheeling, WV 26003	August 18-25
Louisiana Alpha Tulane University - Newcomb College	Mimi Macdiarmid	<b>LOUISIANA</b> 7014 Zimple St. New Orleans, LA 70118	7014 Zimple St. New Orleans, LA 70118	January 8-19, 1992
Louisiana Beta Louisiana State University	Sydney Hall	P.O. Box 25110 Baton Rouge, LA 70894	P.O. Box 25110 Baton Rouge, LA 70894	August 18-25
Maine Alpha University of Maine	Diane Menard	<b>MAINE</b> Pi Beta Phi 107 College Ave. Orono, ME 04469	6 Spring Street Brunswick, ME 04011	September 15-20
Michigan Alpha Hillsdale College	Christy Harris	<b>MICHIGAN</b> 304 Hillsdale St. Hillsdale, MI 49242	32400 Pines Drive Birmingham, MI 48010	January 12-15, 1992
Michigan Beta University of Michigan	Kimberly Duffy	836 Tappan Ann Arbor, MI 48104	10000 Red Maple Drive Plymouth, MI 48170	September 6- October 3
Michigan Gamma Michigan State University	Lisa Lande	343 Harrison Road East Lansing, MI 48823	1800 Alhambra Ann Arbor, MI 48103	September 19-25



<i>Chapter &amp; School</i>	<i>Name of Chapter Membership Chairman</i>	<i>School Address of Chapter Mem. Chrm.</i>	<i>Summer Address of Chapter Mem. Chrm</i>	<i>Dates of Major Rush</i>
Minnesota Alpha University of Minnesota	Kelly B. Flanagan	<b>MINNESOTA</b> 1109 S.E. Fifth Street Minneapolis, MN 55414	1109 S.E. Fifth Street Minneapolis, MN 55414	September 16-20
Mississippi Alpha University of Southern Mississippi	Monica Beausoleil	<b>MISSISSIPPI</b> Southern Station Box 8376 Hattiesburg, MS 39406	Southern Station Box 4121 Hattiesburg, MS 39406	August 19-23
Mississippi Beta University of Mississippi	Gretchen Diane Hellums	P.O. Box 8347 University, MS 38677	3763 Rice Blvd. Houston, TX 77005	August 18-24
Missouri Alpha University of Missouri	Robin Hinton	<b>MISSOURI</b> 511 E. Rollins Columbia, MO 65201	13316 Belfield Dallas, TX 75234	August 19-25
Missouri Beta Washington University	Michele Band	Washington University Box #1182 St. Louis, MO 63105	11306 Colebrook Terr. Potomac, MD 20854	September 12-15, 1991 January 14-19, 1992
Missouri Gamma Drury College	Missy Smillie	900 N. Benton Springfield, MO 65802	1212 N. Jefferson Apt. J Springfield, MO 65809	August 23-25
Montana Alpha Montana State University	Amy Bergsieker	<b>MONTANA</b> 1304 S. 5th Bozeman, MT 59715	2324 Rehberg Lane #9 Billings, MT 59402	August 22-26
Nebraska Beta University of Nebraska	Sarah J. Peterson	<b>NEBRASKA</b> 426 N. 16th Lincoln, NE 68508	4428 N. 7th, Apt. 301 Lincoln, NE 68521	August 16-19
Nevada Alpha University of Nevada	Kelly Griffin	<b>NEVADA</b> 869 N. Sierra Street Reno, NV 89503	3599 Rockridge Ct. Sparks, NV 89431	August 20-24
New Jersey Alpha Princeton University	Karen Gould	<b>NEW JERSEY</b> P.O. Box 1303 Princeton, NJ 08542	687 Camellia Way Los Altos, CA 94024	October 1991
New Mexico Alpha University of New Mexico	Kelley Keith	<b>NEW MEXICO</b> 1701 Mesa Vista NE Albuquerque, NM 87106	801 Parkland Circle SE Albuquerque, NM 87106	August 11-15
New Mexico Beta New Mexico State University	Amy Martinez	307 Greek Row Las Cruces, NM 88003	307 Greek Row Las Cruces, NM 88003	September 5-9
New York Alpha Syracuse University	Carla M. Notarianni	<b>NEW YORK</b> 210 Walnut Place Syracuse, NY 13210	10390 Zionsville Road Zionsville, IN 46077	August 30- September 15
New York Gamma St. Lawrence University	Marcia Lemay	21 Romoda Drive Canton, NY 13617	610 Ford Street Ogdensburg, NY 13669	February 1-15, 1992
New York Delta Cornell University	Rachel A. Raabe	330 Triphammer Road Ithaca, NY 14850	RR2 Box 2443A Wings Point Charlotte, VT 05445	January 13-20, 1992



<i>Chapter &amp; School</i>	<i>Name of Chapter Membership Chairman</i>	<i>School Address of Chapter Mem. Chrm.</i>	<i>Summer Address of Chapter Mem. Chrm.</i>	<i>Dates of Major Rush</i>
New York Epsilon Rensselaer Polytechnic Institute	Jayne Saydah	1985 15th Street Troy, NY 12180	1985 15th St. Troy, NY 12180	January 1992
New York Zeta Colgate University	Lisa Natkin	118 Broad Street Hamilton, NY 13346	105 Pease Road Woodbridge, CT 06525	Spring 1992
<b>NORTH CAROLINA</b>				
North Carolina Alpha University of North Carolina	Joanna Simoni	109 Hillsborough Street Chapel Hill, NC 27514	505 East Poplar Avenue Carrboro, NC 27510	August 27- September 9
North Carolina Beta Duke University	Sara Chambers	P.O. Box 5039 Duke Station Durham, NC 27706	1242 N. Lake Shore Dr. Chicago, IL 60610	January 1992
<b>NORTH DAKOTA</b>				
North Dakota Alpha University of North Dakota	Jackie D. Holm	409 Cambridge Grand Forks, ND 58203	4233 Andberg Way N Brainerd, MN 56401	August 19-24
<b>OHIO</b>				
Ohio Alpha Ohio University	Shani Alge	6 S. College Athens, OH 45701	10235 Johnnycake Road Concord, OH 44077	September 12-22
Ohio Beta Ohio State University	Denise Luehrman	1845 Indianola Avenue Columbus, OH 43201	75 East 14th 2A Columbus, OH 43201	September 22-29
Ohio Delta Ohio Wesleyan University	Carolyn A. Svetz	91 W. Winter Street Delaware, OH 43015	27875 Gardenia Drive North Olmstead, OH 44070	September 20-29
Ohio Epsilon University of Toledo	Anissa B. Groves	2999 W. Bancroft St. C-1 Toledo, OH 43606	2999 W. Bancroft St. C-1 Toledo, OH 43606	September 17-22
Ohio Zeta Miami University	Christine E. Wilmsen	126 Minnich Hall Oxford, OH 45056	#4 Huntleigh Woods St. Louis, MO 63131	November 18, 1991- January 19, 1992
Ohio Eta Dennison University	Allison Dowd	425 W. College Street Granville, OH 43023	18230 Shelburne Rd. Shaker Heights, OH 44118	November, 1991
Ohio Theta Bowling Green State University	Kathy Karbowski	425 E. Court St. Apt 1 Bowling Green, OH 43402	21708 Tenny Dearborn, MI 48124	August 21-27
Ohio Iota University of Dayton	Tricia Labrador	1221 Alberta Dayton, OH 45409	140 Cannonbury D-2 Kettering, OH 45429	September 3-15
<b>OKLAHOMA</b>				
Oklahoma Alpha University of Oklahoma	Kristie Bernauer	1701 Elm Street Norman, OK 73072	11309 Blue Sage Road Oklahoma City, OK 73120	August 14-20
Oklahoma Beta Oklahoma State University	Stephanie Dinsmore	324 S. Cleveland Stillwater, OK 74074	Rt. 2 Box 200 Enid, OK 73703	August 14-19
<b>OREGON</b>				
Oregon Alpha University of Oregon	Angela Sagawa	1518 Kincaid St. Eugene, OR 97401	1535 Rosemont Rd. West Linn, OR 97068	September 15-21



<i>Chapter &amp; School</i>	<i>Chapter Membership Chairman</i>	<i>School Address of Ch. Mem. Chairman</i>	<i>Summer Address of Ch. Mem. Chairman</i>	<i>Dates of Major Rush</i>
Oregon Beta Oregon State University	Judy Diane Jacobs	2685 NW Taylor Corvallis, OR 97330	61615 High Valley Road Union, OR 97883	September 15-22
Oregon Gamma Willamette University	Joanne M. Lytle	900 State St. H230 Salem, OR 97301	617 Lindenwood Drive Nampa, ID 83686	January 22-25, 1992
<b>PENNSYLVANIA</b>				
Pennsylvania Beta Bucknell University	Kimberly Bulow	Box C-784 Bucknell University Lewisburg, PA 17837	51 Brook Ridge Road New Rochelle, NY 10804	Fall 1991
Pennsylvania Gamma Dickinson College	Meredith D. Winsor	Dickinson College HUB 2330 Carlisle, PA 17013-2896	Box 1, HHC 18th Eng BDE APO NY 09164	September 26- October 12
Pennsylvania Epsilon Pennsylvania State University	Donna M. Moy	5 Heister Hall University Park, PA 16802	182 Twiningford Road Richboro, PA 18954	September 3-23
Pennsylvania Zeta Washington & Jefferson College	Bethany J. Sage	241 E. Beau Street Box 1009 Washington, PA 15301	7947 Gannon St. Louis, MO 63130	February 3-7, 1992
Pennsylvania Eta Lafayette College	Jenifer Clachko	P.O. Box 5441 Lafayette College Easton, PA 18042	338 Allison Way Wyckoff, NJ 07481	February 2-14, 1992
Pennsylvania Theta Villanova University	Jennifer Palmer	P.O. Box 2463 Kennedy Hall Villanova, PA 19085	1122 County Line Road Bryn Mawr, PA 19010	January 1992
<b>SOUTH CAROLINA</b>				
South Carolina Beta Clemson University	Tyla Johnson	Pi Beta Phi P.O. Box 2246 Clemson, SC 29632	221 Gin Road Piedmont, SC 29673	August 19-26
<b>SOUTH DAKOTA</b>				
South Dakota Alpha University of South Dakota	Jennifer Hawke	118 N. Plum Vermillion, SD 57069	Rt. 8, Box 1700 Rapid City, SD 57702	September 10-14
<b>TENNESSEE</b>				
Tennessee Beta Vanderbilt University	Allison Withers	118 24 Avenue South Nashville, TN 37212	406 Shadywood Houston, TX 77057	January 1992
Tennessee Gamma University of Tennessee	Robin Edlefon	1531 Cumberland Avenue Knoxville, TN 37916	1940 Norwood Trail Clarksville, TN 37043	August 18-24
Tennessee Delta Memphis State University	Shannon Keywood	P.O. Box 81365 Memphis State University Memphis, TN 38152	5364 Albemarle Drive Memphis, TN 38135	August 18-23
<b>TEXAS</b>				
Texas Alpha University of Texas	Holly Clement	2300 San Antonio #209 Austin, TX 78705	2501 Pearl Street Austin, TX 78705	August 24-September 1
Texas Beta Southern Methodist University	Lynn Rothermel	3101 Daniels Dallas, TX 75205	7514 Middlewood Houston, TX 77063	January 6-11, 1992



<i>Chapter &amp; School</i>	<i>Name of Chapter Membership Chairman</i>	<i>School Address of Chapter Mem. Chrm.</i>	<i>Summer Address of Chapter Mem. Chrm.</i>	<i>Dates of Major Rush</i>
Texas Gamma Texas Tech University	Amy Johnson	P.O. Box 4324 Tech Station Lubbock, TX 79406	2619 30th Street Lubbock, TX 79410	August 26-31
Texas Delta Texas Christian University	Sarah McCalla	P.O. Box 29704 Fort Worth, TX 76129	TCU P.O. Box 32369 Ft. Worth, TX 76129	August 21-26
Texas Epsilon University of North Texas	Cathy Glanville	UNT P.O. Box 13187 Denton, TX 76203	1407 Bernard #253 Denton, TX 76201	August 19-22
Texas Zeta Baylor University (Co-chairmen)	Melissa Good	P.O. Box 85618 Waco, TX 76798	P.O. Box 425 Van Alstyne, TX 75095	January 6-12, 1992
	Darla Ward	P.O. Box 85618 Waco, TX 76798	3110 Santa Monica Denton, TX 76205	January 6-12, 1992
Texas Eta Texas A&M University	Amy Pearce	1601 Munson Avenue College Station, TX 77840	P.O. Drawer BL College Station, TX 77841	August 26-31
		<b>UTAH</b>		
Utah Alpha University of Utah	Debbie McKee	1443 E. 100 South Salt Lake City, UT 84102	1850 Nevada Street Salt Lake City, UT 84108	September 23-28
		<b>VERMONT</b>		
Vermont Beta University of Vermont	Karen Dennison	369 S. Prospect Burlington, VT 05401	6 Wildflower Way Clifton Park, NY 12065	September 20-27
		<b>VIRGINIA</b>		
Virginia Gamma College of William & Mary	Carrie Behm	Pi Beta Phi - Sorority Ct. Richmond Road Williamsburg, VA 23185	846 Hunakai Street Honolulu, HI 96816	September 5-15
Virginia Delta Old Dominion University	Robin Berger	1532 W. 49th Street Norfolk, VA 23508	6600 Otterdale Road Moseley, VA 23120	September 18-23
Virginia Epsilon University of Virginia	Christine M. Hanna	1509 Grady Ave. Charlottesville, VA 22903	2201 Cedar Cove Ct. Reston, VA 22091	January 1992
Virginia Zeta Virginia Polytechnic Institute & State University	Amy Waters	301 SPH-E Blacksburg, VA 24060	11716 Blue Smoke Trail Reston, VA 22091	January 1992
Virginia Eta University of Richmond	Leslie Credit	P.O. Box 55 University of Richmond Richmond, VA 23173	19 Holly Lane Essex Fells, NJ 07021	January 12-18, 1992
		<b>WASHINGTON</b>		
Washington Alpha University of Washington	Monica Maybo	4548 17th NE Seattle, WA 98105	Not available	September 19-25
Washington Beta Washington State University <i>The Arrow of Pi Beta Phi</i>	Natalie Channing	N.E. 825 Linden Street Pullman, WA 99163	1531 Lake Mount Drive Snohomish, WA 98290	August 16-22



Chapter & School	Name of Chapter Membership Chairman	School Address of Chapter Mem. Chrm.	Summer Address of Chapter Mem. Chrm.	Dates of Major Rush
Washington Gamma University of Puget Sound	Angela Calkins	Smith Hall #113 Tacoma, WA 98416	22275 SW Frances St. Hillsboro, OR 97123	January 19-26, 1992
West Virginia Alpha West Virginia University	Sarah McKenney	<b>WEST VIRGINIA</b> 1493 University Avenue Morgantown, WV 26505	1331 Morningside Drive Charleston, WV 25314	September 8-15
Wisconsin Alpha University of Wisconsin	Kristen Martensen	<b>WISCONSIN</b> 130 Langdon St. Madison, WI 53703	248 W. Gilman Madison, WI 53703	August 29- September 6
Wisconsin Delta Marquette University	Kelly Lee	c/o Kim Barger 1100 W. Wells St. #1212 Milwaukee, WI 53233	2606 W. Sunnyside Chicago, IL 60625	September 9-13
Wyoming Alpha University of Wyoming	Christine Kochmann	<b>WYOMING</b> Pi Beta Phi Sorority Row Laramie, WY 82070	1265 N. 18th Street Laramie, WY 82070	September 1-5
Alberta Alpha University of Alberta	Anne Pavlin	<b>CANADA</b> 11012 85 Avenue Edmonton, AB T6G 0W6 CANADA	12043-77 Street Edmonton, AB T5B 2G6 CANADA	September 15-20
Ontario Alpha University of Toronto	Helen Prapavessis	220 Beverly Street Toronto, ON M5T 1Z3 CANADA	140 Wimbledon Rd. Islington, ON M9A 3S7 CANADA	September 16-27
Ontario Beta University of Western Ontario	Janet Liphardt	293 Central Avenue London, ON N6B 2C9 CANADA	132 Farnham Ave. Toronto, ON M4V 1H4 CANADA	September 28- October 6

## Legacy Introduction Form

This form is provided as a convenience for Pi Phi alumnae to introduce legacies to collegiate chapters. Please complete the following to ensure that the chapter is aware of your legacy. Return this form to the appropriate Chapter Membership Chairman listed in this issue of *The ARROW*. **Please remember this introduction does not take the place of a Rush Information Form.**

Date: \_\_\_\_\_

To: \_\_\_\_\_  
Chapter

\_\_\_\_\_ College or University

This is to inform you that my:  granddaughter  daughter  sister

Name: \_\_\_\_\_

From: \_\_\_\_\_  
City State

Will be/is a student on your campus as a:  Freshman  Sophomore  Junior  Senior

Her school address (if known) will be/is: \_\_\_\_\_  
\_\_\_\_\_

Signed: \_\_\_\_\_  
Name (First, Maiden, Last) Year & Chapter of Initiation



# Alumnae News



The **Oak Park-RiverForest, Illinois Alumnae Club** had a special meeting in November. Members gathered at president Nancy Koller's home, and after the business of the meeting, all joined in a Cookie Shine. The younger members in the club arranged the event. It was a nostalgic night as members told what their chapter Cookie Shines were like. While eating the goodies, members played a Pi Phi version of Win, Lose or Draw created by Tina Russo.

A variety of programs, projects and activities made the 1990-91 year special for the **May L. Keller (Richmond, Virginia) Alumnae Club**. A favorite by the club's own versatile game show hostess, Mary Petticrew Onken, was held in November. Mary led the club in a quest for knowledge about Pi Phi philanthropies. University of Richmond students joined the club in a fun and informative evening. The club provides many board members for the Elizabeth Kates Foundation. This is the club's local philanthropy which it has supported for many years. Elizabeth Kates, a Pi Phi, was the first superintendent of the Virginia Woman's Prison. Her endowment fund is the basis of the foundation which provides special projects, gifts and help to the women in the prison.

**Southern Fairfield County Alumnae Club** invited landscape architect John Voit to one of their spring meetings. Mr. Voit illustrated

how to transform mundane, overgrown or otherwise difficult home sites into attractive settings. The club also participated in the annual Fairfield County Panhellenic Association's fashion event at Saks Fifth Avenue in the Stamford Town Center.

Fourteen years ago, in an effort to promote Arrowmont and Arrowcraft sales, the **Kansas City, Missouri-Shawnee Mission, Kansas Alumnae Club** began a program whereby its members gave scholarships to the Arrowmont summer session. Initially the club presented a scholarship every other year, but the program has grown so that two \$500 scholarships are now presented each year. The club's annual auction and Theater Tour generate more than enough income to support this project. The Arrowmont scholarship committee reviews the scholarship applications and selects the winners each spring. Most of the applicants apply from the art departments of the school districts in the greater Kansas City area.

**Lafayette, Indiana Alumnae Club** helped organize and participate in the first Alumnae Panhellenic Boutique last October. Pi Phi alumnae had long sought a new outlet for the sale of Arrowcraft items and were delighted for the opportunity to share with ten other Panhellenic groups a room at the local YWCA. In addition, the club had a Reading is Fundamental literacy program at the club's joint March meeting with Alpha Omicron

Several Pi Phis attended the University of Mississippi's "Convocation 1991." Topics discussed at the conference included ethics, risk reduction and rush. Those representing Pi Phi were Mississippi Betas Terri Nadlicki and Suzanne Malone, Jackson Alumnae Club President Jan Mauldin, Xi Collegiate Province President Jean Gilbert Dampier, AAC Chairman Kerry Slay and House Corporation representative Beth Williston Webb.

Pi alumnae. Shared meetings in March is one of Lafayette Alumnae Panhellenic's yearly projects.

The **Knoxville, Tennessee Alumnae Club** enjoyed an array of good food and conversation at the Senior Pot Luck Dinner in February. Janice Dorsey Hixson graciously provided her home for the annual event. At the dinner, Tennessee Gamma seniors have the chance to get to know the alumnae better and see what the alumnae club is all about.

The Luncheon Group and Career Club of the **Birmingham Alabama Alumnae Club** focused their energies this year on rush and the re-installation weekend for Alabama Alpha at



**Diane Miller, Colorado Alpha, and Adrienne Hiscox Mitchell, Grand Vice President of Philanthropies and Kansas Alpha, with guide Mohammed in Timbouctou. Adrienne was on a Stanford Alumni Association Tour titled "African Kingdom College" when she met Diane, a flight attendant on their chartered flight.**





The Texas Alpha Pi Phi house was the meeting place for the Pi Beta Phi/Kappa Kappa Gamma/ Kappa Alpha Theta alumnae joint coffee. Alumnae club presidents from the three groups in Austin are Margaret Hawn, Kappa Alpha Theta, Debbie Mincher, Kappa Kappa Gamma and Jan Tomforde McNabb, Pi Beta Phi.

ten years and decided to write a novel inspired by her experiences there. Not surprising, there are some scenes in the book that take place at the University of Michigan, where the author actually set up part of a special two-hour TODAY program in the fall of 1985 featuring the U of M and Brown University. Ms. Kayle currently lives in Manhattan and works for Person Inc., a British holding coy.

The **Richardson-Plano Alumnae Club** spent an evening at Texas Scottish Rite Hospital for Crippled Children helping decorate for Christmas last December. Husbands, children and friends joined the members in the rewarding experience. Other projects the club had were providing a meal for a women's shelter, making cookie boxes for the Literacy Council and collecting canned goods.

**Eleanor Hall Benson**, Colorado Alpha and member of the Denver Area Alumnae Club, was named Woman of the Year by the Denver Area Panhellenic Association. Selection was made on the basis of involvement in Panhellenic, community, and sorority, as well as professional and career activity.

Birmingham-Southern College. Two joint meetings were held: the first was a dinner at the Birmingham Botanical Gardens to honor the new pledges and the second was a luncheon at The Club in honor of Founders' Day with Sarah Ruth Mullis, Director of Alumnae Advisory Committees, as guest speaker. On April 12, a preview party was held at the home of Derry Brice Bunting to meet the decorator, view architectural plans, samples of paint, wall-paper etc. for the new Alabama Alpha Townhouse. Betty Ray Price Hughes, who was in charge of the fund-raising for Pi Phi's part of the Townhouse Campaign, and Ann Douglas Henagan, House Corporation member in charge of decorating, planned the party.

In March, the **San Francisco Pi Phis** had an evening at the ballet. The evening began with a talk given by the music director and conductor who described the music and dance the women would be experiencing during the performance. All in attendance then went to dinner at a local Caribbean restaurant before the premiere performance of Dark Elegies at the Opera House.

Linda Sanders, Susan Lenihan and Stacy Burns attended The Manhattan Alumnae Club dessert on February 10. The guest speaker, Ford Model Diane DeWitt, spoke of her experiences as a Pi Phi and the progression of her career.

**Virginia Sewell Norville** and **Anna Jane Stranquist Chain** were recently honored as the Oklahoma City Alumnae Club's newest Golden Arrows. Many former Golden Arrows attended the luncheon, which included reminiscences of college days past. Interesting stories were told and many younger generation Pi Phis were able to learn from the Golden Arrows' experiences.

Michigan Beta alumna **Hilary S. Kayle** is publishing her second novel, *Players* this summer. The book will start appearing in stores as early as mid-June. The plot revolves around an Indianapolis anchorwoman who moves to New York and works on the production staff of a morning network television news show in the hopes of becoming an on-air star. Ms. Kayle worked at NBC's TODAY program for





## Texas State Treasurer is a Pi Phi

On November 6, 1990 history was made in Texas with the election of Kay Bailey Hutchinson, Texas Alpha, as State Treasurer. She is the first Republican woman ever elected to a statewide office. Mrs. Hutchinson took the oath of office on January 2, 1991.

Her career has been marked by a series of firsts. In 1972, she was the first Republican woman elected to the Texas House of Representatives. While in the House, she received outstanding legislator awards from the Association of Professional Educators, the Texas Good Roads Association, the State Bar Association and the Texas District Attorneys Association. Mrs. Hutchinson represented the Houston area in the Texas House from 1972 until 1976.

In 1976, Mrs. Hutchinson was appointed by President Gerald Ford as vice chairman of the National Transportation Safety Board. During her two-year stint on the board, she also served as acting chairman.

Mrs. Hutchinson currently is a member of the prestigious Anthony

Commission on Public Finance, a national public policy group organized by U.S. Representative Beryl Anthony Jr. of Arkansas. Her governmental experience also includes membership on the Governor's Commission for Women, the Governor's Commission Against Crime, and the State Treasurer's Asset Management Advisory Committee. Before running for elective office, she worked as a political and legal correspondent for NBC-TV affiliate KPRC of Houston.

She moved to Dallas in 1978 and became senior vice president and general counsel of RepublicBank Corp. She later co-founded Fidelity National Bank of Dallas and owned McCraw Candies, Inc., a manufacturing company with national distribution. She sold McCraw candies in 1988.

Mrs. Hutchinson has been director of the State Fair of Texas, the Cotton Bowl Athletic Association; the Dallas Women's Foundation Advisory Board, the Boys Club of Dallas and its national board; and the YWCA. She is a former director of the Dallas Chamber of Commerce, a former chairman of the North Dallas Chamber of Commerce, past president of the Executive Women of Dallas, Chapter 100 of Dallas, and the Dallas Forum. She serves on the National Board of International Women's Forum.

This year, USA Weekend listed Mrs. Hutchinson as one of the 20 rising American political stars of the 1990s. In 1987, she was the recipient of the Women's Center "Women Helping Women" award; the 1977 Glamour Magazine, "Ten Outstanding Working Women in America" award, and in 1988 named one of the "Ten Outstanding Young Women in America."



**Kay Bailey Hutchinson**



Sixteen California Gammas from U.S.C. celebrated at a "Twenty Plus Year Reunion" held at the Sea Lodge in La Jolla, California. Members of the 1966, 67, and 68 pledge classes who renewed friendships at the weekend gathering included: (back) Karen Russell Lindsey, Ann McKinley Woods, Terri Jamieson Hoops, Trish Lee Scarborough, Linda Stockmar Pierson, (middle) Suzanne Knolle Wilcox, Joan Heid Boul, Peggy Coker Best, Charie Prickett Laugharn, Leslie Barnett Cies, Nancy Jordan Chenoweth, (front) Sue Adamson Anderson, Nora Stevens Kanoy, Susan Arico Hawley, Christy Thomas Rokow and Diana Wilde Treese.



## Grand Council Makes Trip to Monmouth

Although the day was rainy, spirits were not dampened and some members of Grand Council commented that it was one of the most memorable "Pi Phi days" they have ever had. All were thrilled to make this historic pilgrimage to Pi Beta Phi's founding home together.

The Grand Council of Pi Beta Phi traveled to Monmouth to tour the College campus and Holt House, the founding home of the Fraternity, on Friday, March 1.

Upon arrival at Monmouth, Grand Council enjoyed brunch at the home of Alumnae Province President Elizabeth Davis Vance who was instrumental in planning the day's activities.

The next stop of the day was at Holt House where a formal tour was led by Holt House hostess Marg Cooper. Individual members of Grand Council were delighted to sit in the rocking chair where all founders had sat. Each had her photograph taken in the rocker.

Grand Council then visited the Illinois Alpha chapter room at Marshall Hall on the Monmouth campus. All members enjoyed a few words of welcome and current information about Monmouth College from Mr. Gerald McBride, Vice President of Alumni Affairs and Mr. Drew Boster, Director of Alumni. In addition, Grand Council was personally welcomed to



For the first time in recent history, all seven members of Grand Council visited Holt House together. Center: Grand President Carolyn Helman Lichtenberg. Left top to bottom: Grand Treasurer Carol Inge Warren, Grand Vice President of Membership Carolyn Pavletich Lesh, Grand Vice President of Philanthropies Adrienne Hiscox Mitchell, Right top to bottom: Grand Vice President of Alumnae Sara Shipley Bowers, Grand Secretary Beth van Maanen Beatty, and Grand Vice President of Collegians Jo Ann Minor Roderick.

the college by Monmouth President Dr. Bruce Haywood in his office. Dr. Haywood's wife is a Pi Phi.

Other sites visited included the Pi Beta Phi Lounge in Monmouth College's Hewes Library and the Stuart House. The Stuart House is the founding home of Kappa Kappa Gamma women's Fraternity. The house was recently purchased by Kappa Kappa Gamma alumnae. Grand Council was welcomed there by hostess Barbara Frazier.

Perhaps the most touching part of the day, was when Grand Council vis-

ited the grave sites of five of Pi Beta Phi's founders buried in Monmouth. Elizabeth Vance wrote a tribute to each of the five founders and a memorial service was conducted at each grave.

Tea hour was held at Holt House in the late afternoon. Pi Phi alumnae attending the tea came from Avon, Bushnell, Macomb and Galesburg, Illinois as well as Mt. Pleasant, Iowa. Collegians attended from Knox College, Drake University, Iowa Wesleyan College and Monmouth College.

On Valentine's Day, **Suburban Chicago's Milton Township Alumnae Club** donated paper goods to a local battered women's shelter.

**Bertha Couglan Shelhorn**, Indiana Gamma, was honored with a Cookie Shine by the Kokomo, Indiana Alumnae Club. She is celebrating her 75th year as a loyal, active and inspirational member of Pi Beta Phi. A signature Cookie Shine cloth was signed by all members of the club to remember Mrs. Shelhorn.

**Indianola, Iowa Alumnae Club** had its first Cookie Shine at the Iowa Beta chapter house. Guests were members of the junior class of Iowa Beta. Sheets were placed on a table, in lieu

of the floor, and individuals signed their names on the cloth. Each alumna told how Cookie Shines were when she was in school.

Early American crafts, using the home-grown materials of the pioneers for decorations and toys, was the theme of the March **St. Paul Alumnae Club** meeting. Ginger Tyrell Hammel, expert wheat-weaver, led the club in making cornhusk angels for Founders' Day decorations. Ginger and her family began in April to prepare for the popular fall Renaissance Fair, turning the products of agriculture into creative art.

**Marjorie Uhalde** M.D., a Nevada Alpha alumna, was recently elected the first woman President of the Nevada

Academy of Family Physicians. During her one-year term in office, she will serve as delegate to the American Academy of Family Physicians. This group meets annually in the fall to determine policies for physicians. These policies include Medicare, indigent care and women's health care. Marjorie is a family physician in the Reno, Nevada area and has had a private practice for eight years. She serves on the Board of Directors for the Reno YMCA, is the Chairman of the Board for the Adolescent Care and Treatment Center, a non-profit organization in the Reno area, and is an active member of the Reno Alumnae Club.



## Three Selected as Graduate Fellowship Winners

**Pamela Alberts** graduated in 1989 from the University of California, Davis with a degree in American studies with a biology emphasis. She is currently working toward an M.D. degree at Pennsylvania State College of Medicine. Having completed two years of medical school, Pam will now spend her summers working on rotations in different areas of medicine.

Previous VP Moral for the California Theta Chapter, Pam established several new programs for the chapter. She was the Amy Burnham Onken recipient for Omega collegiate

province. Pam not only excelled in academics and fraternity service as an undergraduate, but also in community service and philanthropic work.

A Magna Cum Laude graduate of West Virginia University, **Beth Choby** received a Bachelor of Arts degree with an emphasis on biology. She will be attending medical school at West Virginia University in pursuit of an M.D. degree. Pediatric reconstructive surgery is Beth's planned area of specialization.

Beth was Vice President of Mental Advancement for West Virginia Alpha as well as philanthropy and scholarship chairman. Very involved in campus activities, Beth served as Secretary of the WVU Student Foundation Board of Managers and Mortar Board President. She was also a member of Golden Key honorary, Alpha Epsilon Delta pre-medical honorary. A WVU

Presidential Scholar, Beth was selected as one of five women on the West Virginia Homecoming Court.

Ohio Alpha **Nealie Pidcock** will be studying for her master's degree in health services administration at Ohio University in the fall. A two-time Harriet Rutherford Johnstone scholarship winner, Nealie continued to serve the Fraternity upon her graduation in 1990. Nealie recently completed her employment with the Fraternity as a Resident Graduate Consultant for Pi Beta Phi's chapter at Villanova University.

A strong undergraduate leader at Ohio University, Nealie continued to serve the campus, Panhellenic and Greek community while at Villanova. While an undergraduate Nealie was Vice President of Moral Advancement and Chapter President for Ohio Alpha.



**Pamela Alberts, California Theta**



**Beth Choby, West Virginia Alpha**



**Nealie Pidcock, Ohio Alpha**

In February, the **Eastern Maine Alumnae Club** held their "Guest Night" with a dinner party at a restaurant in Orono. Following dinner, the group attended the performance of the Andreyan Babalaika Orchestra at the Performing Arts Center on the campus of the University of Maine.

The **Palm Springs/Desert Cities Alumnae Club** brought clothes and other items to their December meeting. The items were donated to the Angel View Children's Center's thrift mart. Three members of the club are officers in the area Panhellenic Association and Jean Caryer Lovejoy is being trained to tutor individuals.



**In the fall of 1990, twenty-two alumnae of Iowa Zeta, University of Iowa gathered at Lake Okoboji in Northern Iowa for a reunion. Ten members were celebrating 52 years of membership in Pi Beta Phi.**



## INTRODUCING

# The Pi Beta Phi 25 Year Recognition Pin



To recognize those who have been Pi Phi members for twenty-five years, Pi Beta Phi introduces the Silver Arrow Society and the 25 year recognition pin.

Its simple diamond design with bevel cut arrow elegantly proclaims twenty-five years of dedication to Pi Phi.

This custom designed silver-tone lapel pin is available for \$12.00 (including shipping and handling). Please direct your order and check, made payable to Pi Beta Phi Fraternity, to:

Pi Beta Phi Central Office  
7730 Carondelet, Suite 333  
St. Louis, Missouri 63105

If you qualify by being a member of Pi Beta Phi for at least twenty-five years, take this opportunity to be among the first to order the Silver Arrow Society recognition pin.



# Scholarship Winners

## Harriet Rutherford Johnstone



**Brita Abrahamson**  
Montana Alpha  
Montana State  
University



**Heather Carman**  
Ohio Delta  
Ohio Wesleyan  
University



**Shani Lee Cate**  
California Delta  
UCLA



**Aime Clarke**  
Nebraska Beta  
University of Nebraska



**Christa Cowart**  
Florida Alpha  
Stetson University



**Evelyn Dallara**  
Florida Beta  
Florida State University



**Karen Dargo**  
New York Alpha  
Syracuse University



**Angela Elserper**  
North Dakota Alpha  
University of North  
Dakota



**Nicole Felini**  
Virginia Eta  
University of Richmond



**Alicia Hartung**  
Pennsylvania Zeta  
Washington & Jefferson  
College



**Kathi Johnson**  
South Dakota Alpha  
University of South  
Dakota



**Jennifer Knight**  
Indiana Beta  
University of Indiana



**Amy Lightfoot**  
Ohio Delta  
Ohio Wesleyan  
University



**Brittany Looman**  
Arizona Gamma  
Northern Arizona  
University



**Mona Metwalli**  
New Jersey Alpha  
Princeton University



**Rena Murphy**  
Kentucky Gamma  
Eastern Kentucky  
University



**Shonaree Murray**  
Texas Zeta  
Baylor University



**Merritt Olsen**  
California Eta  
University of California-  
Irvine



**Chelsey Owen**  
Washington Alpha  
University of  
Washington



**Heather Park**  
Oregon Alpha  
University of Oregon





**Marcie Pearish**  
Indiana Gamma  
Butler University



**Tammy Schilling**  
Oregon Beta  
Oregon State University



**Kristen Soike**  
California Delta  
UCLA



**Amanda Simonis**  
Arizona Beta  
Arizona State University



**Theresa C. Stivers**  
Kentucky Gamma  
Eastern Kentucky  
University



**Kimberly Strand**  
North Dakota Alpha  
University of North  
Dakota



**Kathryn Tweedy**  
Indiana Epsilon  
DePauw University



**Leigh Walker**  
Texas Zeta  
Baylor University



**Heather Way**  
Texas Alpha  
University of Texas



**Diana Whittenberger**  
Illinois Beta-Delta  
Knox College



**Laura Woodruff**  
California Eta  
University of California-  
Irvine



**Kelly Zinser**  
Missouri Beta  
Washington University



Frances Hall Comly



**Lynn Hewing**  
Illinois Eta  
Millikin University

Louisiana Alpha Triple M



**Amber Bollinger**  
Louisiana Beta  
Louisiana State  
University



**Valerie Wagner**  
Louisiana Alpha  
Tulane University

Massachusetts Alpha



**Wendy Martin**  
Alabama Gamma  
Auburn University

Ruth Barrett Smith



**Jeniece Nott**  
Indiana Epsilon  
DePauw University



**Aimee Randolph**  
New Jersey Alpha  
Princeton University

Junior Alumnae Group



**Kerry Bonge**  
Nebraska Beta  
University of Nebraska



**Shannon Simons**  
Indiana Alpha  
Franklin College



# Take Pi Beta Phi Wherever You Go

## The Pi Beta Phi Classic Visa

Wherever your pursuit of pleasure or success takes you, there's no better traveling companion than your Pi Phi Classic Visa. It's the card to carry around the block or around the world.

### The Card For You.

We want you to try the Pi Phi Card, and to entice you, First Tennessee Bank has agreed to waive the annual fee for the first year. Even after that your annual fee will be only \$18. Cards with comparable features frequently have annual fees of \$25 or more!

Compare our low 16.5% Annual Percentage Rate with the APRs of cards you're carrying now. It is one of the lowest available. And, if you choose to pay your balance in full each month, you can avoid interest charges altogether.

As a Pi Phi cardholder you'll be entitled to free membership in the Premier Travel Club. With Premier Travel you can be assured that you are always getting the best travel value. Whether you are booking the ultimate vacation cruise or a quick business trip, Premier is the best connection you can have in the travel business.

You'll also qualify for a 5% cash bonus whenever you make your travel reservations through Premier Travel Club and pay for them with your Pi Phi Card. And, you'll get \$250,000 free travel accident insurance on all trips charged to your card.

And, there's more. You'll save every time you rent a car with your special member discounts from Hertz, National and Avis anywhere in the USA.

Your Premier Travel membership also means that wherever you go you'll be able to use our 24-hour travel message service for those times when it's hard to make connections. And, if you're ever stranded away from home without

your card, we can provide you with up to \$1,000 emergency cash and an airline ticket home.

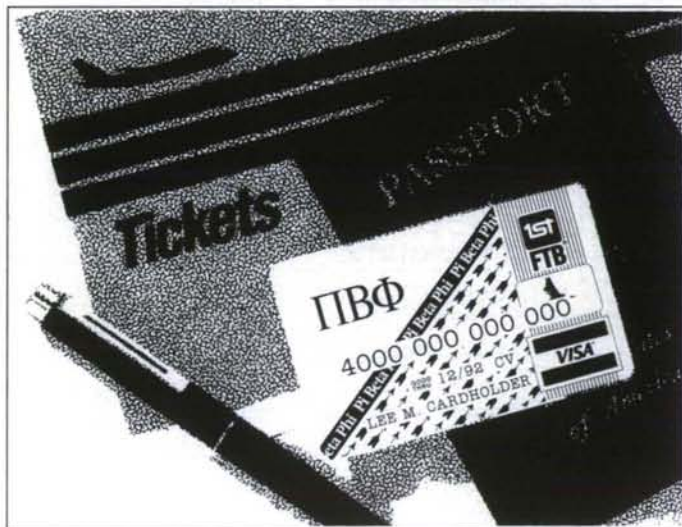
### The Card For Us.

We have a right to be proud of our Fraternity, and every time you use your Pi Phi Card you'll be showing that pride.

And, of course, every time you make a purchase with your card First Tennessee will make a contribution to the Fraternity at no cost to you. The more we use our cards the more Pi Phi will benefit.

### The Time Is Now.

Call our toll-free number today and start putting your credit card to work for Pi Beta Phi.



Please call  
**1-800-  
669-  
7474**  
Extension 023  
to request an  
application.



# IN MEMORIAM

Initiation Year and Month and Year of Death follow each member's name and chapter of initiation.  
When submitting death notices to Central Office,  
please give month and year of death. Names cannot be listed without this information.

## Alabama Alpha

**Eloise Cary Hutchins** (Mrs. John)  
1927; October, 1990

## Arizona Alpha

**Ina St. Clair Reed** (Mrs. Charles)  
1928; November, 1990

## California Alpha

**Nancy Campbell Brown** (Mrs. T.  
T.) 1927; February, 1991

## California Beta

**Jacquelin Kingsbury Fowler**  
(Mrs. Edgar) 1946; September,  
1990

**Hope Tschopik Pigman**, 1935;  
March, 1991

**Pauline Turner Sayre** (Mrs.  
Raymond) 1916; January, 1991

**Helen Rivolta Thierolf**, 1937;  
July, 1990

## California Gamma

**Queen E. Masters Smith** (Mrs. J.  
W.) 1917; January, 1991

## California Delta

**Harriet Potts Seely** (Mrs. Ralph)  
1927; March, 1991

## Colorado Alpha

**Jean Ware Gillon**, 1929; March,  
1991

**Shirley Reybold Harvey** (Mrs.  
Jack) 1938; March, 1991

**Charlotte Gustavson Wheeler**  
(Mrs. Robert) 1938; March, 1991

**Marion Diamond Williamson**  
(Mrs. Howard) 1929; January,  
1991

## Colorado Beta

**Lorene Allen**, 1919; February,  
1991

**Mildred Keith Short** (Mrs. Ralph)  
1918; January, 1991

## D.C. Alpha

**Betty Angus Johnson** (Mrs. J. A.)  
1935; November, 1990

## Florida Alpha

**Wilma Broward Miller** (Mrs. A.  
H.) 1935; March, 1991

**Jennifer Troxel**, 1991; April, 1991

## Florida Beta

**Nancy J. Kulp**, 1942; February,  
1991

**Rebecca Leland Park** (Mrs.  
Arthur) 1925; March, 1991

## Florida Gamma

**Marjorie McMichael Pickard**,  
1929; March, 1991

**Elizabeth Garrett Sutherland**,  
1957; August, 1990

## Georgia Alpha

**Patricia L. Albert**, 1956; February,  
1991

**Louise Jarrell Kirby** (Mrs. James)  
1944; November, 1990

## Idaho Alpha

**Margaret Kinyon**, 1924; January,  
1991

**Mabel Morton**, 1936; December,  
1990

**Adamay Dorman Norris** (Mrs.  
Claude) 1926; January, 1991

## Illinois Alpha

**Martha Bradford**, 1929; March,  
1991

**Beverly Jones White** (Mrs. J. R.)  
1945; February, 1991

## Illinois Beta-Delta

**Jane McCanna Harris** (Mrs.  
Boyd) 1935; February, 1991

## Illinois Delta

**Miriam Wylie Eickhoff** (Mrs. H.  
J.) 1918; February, 1991

## Illinois Zeta

**Margery Bellows Brown** (Mrs.  
Richard) 1941; January, 1991

**Juanita Zimmerman Grigsby**  
(Mrs. Lewis) 1941; December,  
1990

## Indiana Beta

**Jeannette Henn Akers** (Mrs. K.  
W.) 1920; June, 1990

**Dorothy Arndt Inglis** (Mrs. John)  
1921; February, 1991

**Frances Hauss Madsen** (Mrs.  
August) 1915; January, 1991

## Indiana Gamma

**Louise Moon Ross** (Mrs. Harold)  
1930; January, 1991

## Indiana Delta

**Betsy Ross Luring** (Mrs. B. G.)  
1933; December, 1990

**Jane Pavey Scheip** (Mrs. J. R.)  
1940; October, 1990

## Indiana Epsilon

**Jean Schmausser Foutch** (Mrs.  
Jack) 1951; March, 1991

## Indiana Zeta

**M. Louise Earhart Hassinger**  
(Mrs. Dent) 1955; March, 1991

## Iowa Alpha

**Alice Dutton Kallenberg** (Mrs. A.  
R.) 1928; December, 1990

**Ethel Stevens Lamm West** (Mrs.  
J. William) 1926; October, 1990

## Iowa Beta

**Mary Keister Davis** (Mrs. R. T.)  
1937; January, 1991

**Ann Olson Lavelly** (Mrs. G.  
Harold) 1928; December, 1990

## Iowa Gamma

**Mary Vaughn Burlingham** (Mrs.  
Charles) 1911; January, 1991

**Margaret Armstrong Crisp**, 1933;  
December, 1990

**Marcia McKay Howie** (Mrs.  
Harry) 1917; October, 1990

**Helena Mahnke Hunt**, 1919;  
February, 1991

**Elizabeth Davis Schroeder** (Mrs.  
Jack) 1946; September, 1990



## Iowa Zeta

- Elizabeth Boyle Ames**  
(Mrs. Robert) 1931; November, 1990
- Kathryn Dayton Aurner** (Mrs. Robert) 1917; February, 1991
- Emily Corbin Lambert** (Mrs. Craig) 1934; January, 1991
- Eulalia Klingbeil Seiler** (Mrs. William) 1937; October, 1990

## Kansas Alpha

- Mary Ruth Pyle Breidenthal**  
(Mrs. John) 1933; February, 1991
- Martha Nuzman Cain** (Mrs. Robert) 1935; November, 1990
- Lucille Wilson Liggett** (Mrs. Harry) 1923; February, 1991
- Helen Block Martin** (Mrs. O. L.) 1929; June, 1990
- Gladys Luckan Murphey** (Mrs. Albert) 1914; August, 1990
- Betty Campbell Schutte** (Mrs. Louis) 1939; November, 1990
- Helen Coffman Utter** (Mrs. Fred) 1925; February, 1991

## Kansas Beta

- Marian Todd Burk** (Mrs. Max) 1932; February, 1991

## Louisiana Beta

- Dollie Sue Viebig**, 1947; January, 1991

## Maine Alpha

- Elinor L. Dixon**, 1941; December, 1990

## Maryland Alpha

- Frances Sibley Christian Brand**, 1919; November, 1990
- Marie Colcord Fort** (Mrs. James) 1917; February, 1991
- Elizabeth (Betty) M. Greig**, 1927; January, 1991
- Lucille McCormick**, 1935; May, 1990

## Massachusetts Alpha

- Eleanor Dodd**, 1924; July, 1990

## Michigan Alpha

- Gladis Clark Kern** (Mrs. H. E.) 1923; December, 1990
- E. Margaret Seitz**, 1920; March, 1991
- Kathryn Lewis Shankweiler** (Mrs. R. G.) 1931; February, 1991

## Michigan Beta

- Kathryn Clarke Cassidy** (Mrs. S. M.) 1923; April, 1991
- Margaret Lorenz Sinclair**, 1936; November, 1990

## Mississippi Beta

- Christine Drake**, 1962; February, 1991

## Missouri Alpha

- Nancy Low Aparton** (Mrs. Jerome) 1963; January, 1991
- B. Moneta Butts Bosse** (Mrs. M. A.) 1907, *affiliated Kansas Alpha*; December, 1990
- Rosalind McPherson Capers** (Mrs. W. L.) 1931; January, 1991
- Dorothy Leathem Nelson** (Mrs. Thomas) 1923; February, 1991

## Missouri Beta

- Betty Lou Custer**, 1942; February, 1991
- Gloria Gross Franey** (Mrs. William) 1945; February, 1991

## Missouri Gamma

- Orpha Foltz Smith Dillard** (Mrs. Frank) 1914; April, 1990
- Colleen Kenny Garnsey** (Mrs. Morris) 1926; February, 1991
- Margaret Lacy Mauck** (Mrs. W. E.) 1926; February, 1991
- Katherine Diffenderfer Shannon** (Mrs. Marion) 1922, *affiliated Missouri Alpha*; April, 1991

## Montana Alpha

- Mabelle Willcomb Haney** (Mrs. W. S.) 1933; March, 1991
- Evelyn Hanson McEacheron** (Mrs. J.) 1937; November, 1990
- Marian Huntley Turner** (Mrs. D.) 1935; December, 1990

## Nebraska Beta

- Edith T. Haynie**, 1932; February, 1991

## Nevada Alpha

- Elizabeth Priest Thompson** (Mrs. Elmer) 1949; December, 1990

## New York Alpha

- Martha Brubaker Pardee** (Mrs. Lawrence) 1935; November, 1990

## New York Gamma

- Margaret Van Bergen Bolognesi** (Mrs. A.) 1925; November, 1990

## North Carolina Alpha

- Frances Hampton Goodridge** (Mrs. Noah) 1931; March, 1991
- Florence Anne Holmes Hubbard** (Mrs. Hampton) 1945; December, 1990
- Mary Yellott McNitt** (Mrs. Charles) 1924; January, 1991
- Adelaide McAnally Schnell**, 1930; December, 1990

## North Dakota Alpha

- Hannah Scott Cronquist** (Mrs. Clark) 1921; March, 1991
- Beverly Lammey Sax** (Mrs. Joseph) 1949; December, 1990

## Ohio Alpha

- Grace McKee Evans** (Mrs. Granville) 1916; March, 1991

## Ohio Beta

- Dorothy Dyer Corner** (Mrs. Dayton) 1916; January, 1991

## Ohio Delta

- Julie Fletcher Edgerton** (Mrs. T. R.) 1936; February, 1991

## Oklahoma Alpha

- Sybil Clover Johnston** (Mrs. Dale) 1921; December, 1990
- Ruth Little Osteen** (Mrs. James) 1927; December, 1990
- Raymida Harber Ratliff** (Mrs. Walter) 1951; June, 1990

## Oklahoma Beta

- Lois Davidson Johnson** (Mrs. David R.) 1919; September, 1990
- Sarah (Sally) Million King** (Mrs. Ralph H.) 1934; January, 1991
- Frances Hays Radnich** (Mrs. Spencer) 1928; February, 1991

## Ontario Beta

- Barbara Morris Busby** (Mrs. S. M.) 1939; July, 1990

## Oregon Alpha

- Betty Tubbs Watzek** (Mrs. Peter F.) 1935; February, 1991



### Oregon Beta

**Mary Loggan Encisco** (Mrs. Ben)  
1950; February, 1991

**Nancy Dewey Johnson** (Mrs.  
Arthur) 1940; November, 1990

### Pennsylvania Alpha

**Catharine Wright Donnelly**,  
1914; January, 1991

**Lucy Black Dougherty**, 1932;  
November, 1990

**Ruth Davis Mahaffey** (Mrs. A. F.)  
1928; February, 1991

### Pennsylvania Beta

**Francis McGee Heim** (Mrs. R. C.)  
1930; February, 1991

### Pennsylvania Gamma

**Eleanor Epright Kishbaugh** (Mrs.  
A. M.) 1920; January, 1991

### South Dakota Alpha

**Ethel Lyckholm Gunderson**  
(Mrs. Clark) 1927; November,  
1990

### Texas Alpha

**Hallie Dewar Heyer** (Mrs.  
George) 1954; November, 1990

**Margaret Sleeper Sames** (Mrs.  
Harry) 1917; December, 1990

### Texas Gamma

**Queenelle Sawyer Flache** (Mrs.  
T. W.) 1953; October, 1990

### Utah Alpha

**Mary Taylor Rule** (Mrs. William)  
1941; January, 1991

### Vermont Beta

**Margaret Wood Averill** (Mrs. L.  
M.) 1925; August, 1990

**Margaret Patten Gilbert** (Mrs. A.  
T.) 1916; November, 1990

### Virginia Beta

**Sara McCormick Jones** (Mrs. E.  
P.) 1928; January, 1991

### Virginia Gamma

**Cynthia Brooker Landau** (Mrs.  
Paul) 1955; November, 1990

### Washington Alpha

**Janice Jared DuFresne** (Mrs.  
Robert) 1947; December, 1990

**Patricia Hallock Eader** (Mrs.  
Ronald) 1948; December, 1990

**Patricia Fiset John** (Mrs. Philip)  
1933; February, 1991

**Eloise Norton Wayman** (Mrs.  
William) 1936; February, 1991

### Washington Beta

**Jane Dunning Baldwin** (Mrs.  
Warren) 1930; March, 1991

**Hazel Ellis Edmundson** (Mrs.  
William Dean) 1930; December,  
1990

**Marjorie Neal Ritchie** (Mrs.  
Orville) 1930; April, 1990

### Washington Gamma

**Stephanie Ann Ausich**, 1988;  
November, 1990

### West Virginia Alpha

**Helen Carle Ambler** (Mrs. C. H.)  
1918; February, 1991

### Wisconsin Alpha

**Doris Fishburn Akerman**, 1925;  
February, 1991

**Eleanor White Pannier** (Mrs. P.  
J.) 1928; October, 1990

**Hildegard Meyer Perry Porter**  
(Mrs. Harrison) 1932; December,  
1990

### Wisconsin Beta

**Mildred Lytle Davis** (Mrs. John  
B.) 1920; December, 1990

### Wisconsin Gamma

**Sue Ann Risser Hagerup** (Mrs.  
Leonard) 1942; March, 1991

### Wyoming Alpha

**Ida Ward Holmes**, 1921; October,  
1990

**Helen Nelson Jeffers** (Mrs. D. S.)  
1911; November, 1990

**Jane Beck Johnson** (Mrs. Nelson)  
1920; February, 1991

**Catharine Abbey Olander** (Mrs.  
Russell L.) 1931; July, 1990

## PI BETA PHI FOUNDATION MEMORIAL AND HONORARY GIFTS

I/We are making a gift of \$ \_\_\_\_\_

In memory of \_\_\_\_\_  
who died on \_\_\_\_\_

In honor of \_\_\_\_\_

Name of individual donor or club: \_\_\_\_\_

If club, president's name: \_\_\_\_\_

Street Address: \_\_\_\_\_

City/State/Zip: \_\_\_\_\_

Send acknowledgement to: \_\_\_\_\_

Street Address: \_\_\_\_\_

City/State/Zip: \_\_\_\_\_

Please make check payable to the Pi Beta Phi Foundation. All gifts to the Foundation are deductible as charitable contributions for tax purposes to the full extent provided by law. Mail this form with your gift to:

Pi Beta Phi Foundation  
7730 Carondelet, Suite 333  
St. Louis, MO 63105



# Fraternity Directory

## Former Grand Presidents

- Alice Weber Johnson** (Mrs. Irwin T.) MO Beta, Box 337, Carmel Valley, CA 93924
- Dorothy Weaver Morgan** (Mrs. Kent R.) NE Beta, 2540 Stockwell, Lincoln, NE 68502
- Sarahjane Paulson Vanasse** (Mrs. Horace) WA Beta, 3401 25th West, #520, Seattle, WA 98199
- Elizabeth Turner Orr** (Mrs. J. Gordon) OR Alpha, 14800 SW 106th, Tigard, OR 97223
- Jean Wirths Scott** (Mrs. Jon) PA Beta, 1186 Cedarwood Drive, Moraga, CA 94556

## Officers Emeriti

- Grand President Emeritus**—Marianne Reid Wild (Mrs. Robert) KS Alpha, The Westwood, 5101 Ridgefield Road, Bethesda, MD 20816
- Grand Treasurer Emeritus**—Orpha O'Rourke Coenen (Mrs. Andrew G.) IN Delta, P.O. Box 8, Little Chute, WI 54140

## Grand Council

- Grand President**—Carolyn Helman Lichtenberg (Mrs. Joseph M.) OH Alpha, 6512 Anna Maria Court, McLean, VA 22101
- Grand Vice President of Collegians**—Jo Ann Minor Roderick (Mrs. M. W.) OK Beta, 701 Greystone, Stillwater, OK 74074
- Grand Vice President of Alumnae**—Sara Shipley Bowers (Mrs. Donald S.) NC Alpha, P.O. Box 10177, Fort Smith, AR 72917
- Grand Vice President of Philanthropies**—Adrienne Hiscox Mitchell (Mrs. Bruce T.) KS Alpha, 165 Redwood Drive Hillsborough, CA 94010
- Grand Vice President of Membership**—Carolyn Pavletich Lesh (Mrs. Larry M.) TX Delta, #1 Forest Park, Richardson, TX 75080
- Grand Secretary**—Beth van Maanen Beatty (Mrs. C. C.) TX Gamma, 1506 San Sebastian Lane, Nassau Bay, TX 77058
- Grand Treasurer**—Carol Inge Warren (Mrs. Richard J.) NC Beta, 5439 Cascade Drive, Lisle, IL 60532

## Directors

- Director of Academic Standards**—Ann Warmack Brookshire (Mrs. Brad) TX Beta, 820 Mallory Court, Tyler, TX 75703
- Director of Alumnae Activities**—Kay Cross Baker (Mrs. Michael) IN Gamma, 27 Cedar Hill Road, Easton, CT 06612
- Director of Alumnae Advisory Committees**—Sarah Ruth Mullis (Miss) SC Alpha, 10 Kings Tavern Place, Atlanta, GA 30318
- Director of Alumnae Extension**—Janet Blume Hamilton (Mrs. A. R.) IN Zeta, 20 Heritage Lane, Stamford, CT 06903

- Director of Alumnae Records**—Sara Wareham Waggoner (Mrs. D. D.) WI Alpha, 3223 Hartford Road, Orange, CA 92669
- Director of Chapter House Corporations**—Lou Ann Montgomery Carter (Mrs. William B.) OK Alpha, Box 3925, 8 Barberry Lane, Wilmington, DE 19807
- Director of Collegiate Extension**—Carolyn Cromb Brada (Mrs. Donald R.) KS Alpha, 52 Mission Road, Wichita, KS 67207
- Director of Membership**—Betty Blades Lofton (Mrs. T. M.) IN Gamma, 9060 Pickwick Drive, Indianapolis, IN 46260
- Director of Pledge Development**—Sheila Consaul (Miss) IL Theta, P.O. Box 18003, Washington, D.C. 20036
- Director of Rush**—Gayla Velvin Ferree (Mrs. Charles) OK Alpha, 3413 Acorn Run, Fort Worth, TX 76109
- Director of Undergraduate Programming**—Sheila Graham Sherman (Mrs. Robert) IL Theta, 804 White Willow Bay, Palatine, IL 60067

## Appointed National Officers

- National Panhellenic Conference Delegate**—Jean Wirths Scott (Mrs. Jon) PA Beta, 1186 Cedarwood Drive, Moraga, CA 94556
- Editor of The ARROW**—Jennifer Moeller Barcus (Mrs. C. Blaine) MO Alpha, Pi Beta Phi Central Office, 7730 Carondelet, Suite 333, St. Louis, MO 63105
- Convention Coordinator**—Mary Kahlenberg Schroeder (Mrs. Alan) IL Epsilon, 4284 Woodland Shadows Place, Santa Rosa, CA 95404
- Fraternity Historian**—Barbara Sands Olsen (Mrs. James C.) IL Zeta, 30965 Clinton, Bay Village, OH 44140
- Supervisor of Chapter Histories**—Wynne Cook Klenner, TN Alpha, 409 Chestnut Street, Suite 102, Chattanooga, TN 37402
- Elections Coordinator**—Janet Goode Durham (Mrs. J. M.) WI Gamma, 10512 Cochise Avenue, Scottsdale, AZ 85258
- National Archivist**—Annette Mitchell Mills (Mrs. Jack P.) AL Alpha, 2128 Vestridge Drive, Birmingham, AL 35216
- Assistant Convention Coordinator**—Jerelyn Wright Biehl (Mrs. Sean) CA Delta, 1833 Tustin Street, San Diego, CA 92106
- Graduate Consultant Coordinator**—Cirrelda Barnard Mills (Mrs. A. J., Jr.) OK Alpha 1985 Stoney Hill Road, Boulder, CO 80303
- Parliamentarian**—Janice Shrader Mossman (Mrs. David W.) NE Beta, 1211 North 126 St., Omaha, NE 68154
- Regional Chapter Support Officers**—Joanne MaGirl Arnold (Mrs. Donald R.) TX Beta, 32640 Spinnaker Drive, Avon Lake, OH 44012 AND Elizabeth Jordan Holman (Mrs. Calvin) AZ Alpha, 9225 North 53rd Place, Paradise Valley, AZ 85253 AND Linda Burrows Priest (Mrs. J.R.) OK Beta, 203 East 11th Street, Pawhuska, OK 74056

- Supervisor of Province Coordinators**—Patricia Friend Cooke (Mrs. William W.) ID Alpha, 23832 140th SE, Kent, WA 98042
- Assistant to the Grand Treasurer**—Maurine Hager Jones (Mrs. K. C.) MT Alpha, 4308 Oakridge Drive, Midland, MI 48640

## Pi Beta Phi Central Office

- 7730 Carondelet, Suite 333, St. Louis, MO 63105, 314/727-7338, FAX. 314/727-8049
- Executive Director**—Virginia Bland Fry (Mrs. Hugh L.) TN Beta
- Controller**—Lee Ulrich
- Communications Coordinator**—Jennifer Moeller Barcus (Mrs. C. Blaine) MO Alpha

## Special Officers

- Traveling Graduate Consultants**—Tammie Beckwith, Brenda Hoy, Jocelyn Davies, Jennifer Peterson, Tammy Romanek
- Resident Graduate Consultants**—Kim Barger, WI Delta; Lori Poveromo, AL Alpha; Denise Reed, AZ Gamma;

## Pi Beta Phi Foundation

- President**—Ann Dudgeon Phy (Mrs. Paul W.) TX Alpha, 4408 Lorraine, Dallas TX 75205
- Director of Development**—Lynn M. Guenzel, Pi Beta Phi Central Office, 7730 Carondelet, Suite 333, St. Louis, MO 63105

## National Board of Trustee Funds

- Chairman**—Carol Inge Warren (Mrs. Richard J.) NC Beta, 5439 Cascade Drive, Lisle IL 60532

## Fraternity Insurance Representatives

- Property and Liability Insurance**—Corbin-Gillespie Agency, 1592 Conner St., P.O. Box 190, Noblesville, IN 46060
- Group Hospital Indemnity Plan Insurance**—Insurance Administrators Co., 216 N. 11th St., Lincoln, NE 68508

## Arrowcraft, Inc.

- Arrowcraft Shop**—576 Parkway Gatlinburg, TN 37738 1-800-336-1096
- Board of Directors President**—Lucy Baker Warner (Mrs. John R.) 21222 Endsley Avenue, Rocky River, OH 44116
- Arrowcraft Interim Manager**—Veryl Monhollen
- Pi Phi Express Interim Manager**—Veryl Monhollen



## Arrowmont

Arrowmont School of Arts & Crafts, Box 567, Gatlinburg, TN 37738, 615/436-4411

**Director, Arrowmont School of Arts and Crafts**—Sandra Blain, Arrowmont, Box 567, Gatlinburg, TN 37738

**Pi Beta Phi Settlement School Board of Governors Chairman**—Barbara Anderson Gates (Mrs. C. A.) 5233 East 70th St., Indianapolis, IN 46220

## Holt House

402 East 1st Avenue, Monmouth, IL 61462

**Hostess**—Margaret Bowker Cooper (Mrs.)

**Hours:** 10:00 A.M. to 12 noon and 2:00 P.M. to 4:00 P.M. weekdays. By appointment Saturdays, Sundays and holidays.

## Standing Committees

**Alumnae Committee for Continuing Education Chairman**—Jean Nees Tulin (Mrs. Rodney) R.R. 1, Box 73B, Knoxville, IL 61448

### Budget and Finance Committee

**Chairman**—Carol Inge Warren (Mrs. Richard J.) 5439 Cascade Dr., Lisle, IL 60532

### Canadian Philanthropies Committee

**Chairman**—Helen Steeves Jull (Mrs.) 1318 Quebec Ave. SW, Calgary, AB T2T 1G2, CANADA

### Collegiate Scholarship Committee

**Chairman**—Beth Van Maanen Beatty (Mrs. C.C.) 1506 San Sebastian Lane, Nassau Bay, TX 77058

### Convention Committee Chairman

Martha Wohler Bickel (Mrs. F. Gilbert III) 30 Huntleigh Woods, St. Louis, MO 63131

### Emma Harper Turner Memorial Fund

**Committee Chairman**—Evelyn Peters Kyle (Mrs. Stanley) 23 Oak Knoll Gardens, Pasadena, CA 91106

### Extension Committee Chairman

Dee Dee Williams Brown (Mrs. Sidney) 9258 Lawndale, Evanston, IL 60203

### Fellowship Committee Chairman

Robin Vogel (Miss) 50 Meredith Lane, Stamford, CT 06903

### Holt House Committee Chairman

Anne Travis O'Connell (Mrs. Robert F.) 11 Homewood, St. Louis, MO 63122

### House Director Committee Chairman

Lou Ann Montgomery Carter (Mrs. William B.) Box 3925, 8 Barberry Lane, Wilmington, DE 19807

### Legislative Committee Chairman

Jan Kinnune Hillesland (Mrs. Kent L.) 882 Camino Ricardo, Moraga, CA 94556

### Literacy Committee Chairman

Casey Healey Killblane, 4020 Thomas St., Oceanside, CA 92058

### Literacy Committee Club/Chapter

**Program Development Chairman**—Jean Egmon, 17 W 718 Butterfield, Apt. #103, Oakbrook Terrace, IL 60181

### Loan Fund Committee Chairman

Joan McBain Stettler (Mrs. Wayne D.) 16 Huron Dr., Chatham, NJ 07928

### Music Committee Chairman

Linda Hooper Wassberg (Mrs. James) 6101 Howe Dr., Fairway, KS 66205

### Nominating Committee Chairman

Barbara Varner Frizell (Mrs. E. E. II) 2609 Heather Parkway, Hutchinson, KS 67502

# EXPECT A CALL!

Beginning June 7, 1991, representatives of Harris Publishing Co., Inc. will start telephoning alumnae for the verification phase of our Pi Beta Phi Fraternity Alumnae Directory project.

Much of the information to be verified on each individual's listing will be going into the Directory. Specifically, current name, academic data, residence address and phone number

(if applicable). The scope of this information is an indication of the thorough and complete quality of the entire volume. The Directory will sort this data by name in the alphabetical division, and by chapter and geographical location in separate sections of the book. Also included will be special information on the Fraternity.

Soon locating fellow alumnae will be as easy as turning a page with the Pi Beta Phi Fraternity Directory. You may reserve your personal copy when your Harris representative phones. This will be your only opportunity to order this comprehensive new directory.





# Dear Editor

Thank you so much for including the picture of me with my dog, Roody, in the Spring ARROW.

Roody is such a special dog I think she needs a little more introduction. She is a Certified Hearing Ear Dog. She alerts me to sounds, such as, the doorbell, smoke alarm, telephone, oven timer, someone calling my name, and her most difficult job is waking me when the alarm goes off. (As any of my Arizona Alpha housemates will testify—this is really difficult.) Since I have been widowed I depend on Roody fully to alert me to sounds.

Hearing Dogs are recognized internationally by their orange collar and leash and have all the rights of Guide Dogs. Roody goes everywhere with me; into restaurants, grocery stores, hotels, on airplanes, etc. She is a marvelous companion and allows me to live my life quite independently—I don't know what I would do without her.

Anne Busch Hills  
Arizona Alpha  
La Canada Flintridge, California

After graduating from college a year ago, I remember how sad I was. All the joy and happiness I shared as a Pi Phi college student were coming to an end. Leaving my Pi Phi sisters was a hard thing to do. My dearest friend, little sister and roommate Caroline Brenke and I were parting for the first time. Needless to say the tears began to fall.

Pi Phi not only gave me everlasting friendships but a chance of a lifetime. I am so grateful to be a Pi Phi and for all things it gave to me. Even though my college years are over, I am proud to say Pi Phi is not. Thank you Pi Phi for making my college years the most memorable and unforgettable.

Stephanie Fulton  
Mississippi Alpha  
Baton Rouge, Louisiana

It pleases me to see articles such as "Making a World of Difference" in the Winter ARROW. In these times of growing awareness, concern for our environment and the ability to reduce, reuse and recycle should be embraced by all. I am proud the New York Gamma Chapter is also a chapter that recycles.

I am concerned, however, whether Pi Beta Phi, which takes pride in leadership is really doing all it can to lead the way in this area. Has The ARROW been printed on recycled paper, as well as mailings from Central Office? Each of us should examine our wasteful habits and affect a change.

I would challenge each member of Pi Phi to be a leader in her community. Use and promote recycled products, as well as alternative cleaning products, energy efficient light bulbs, and reduce consumption of disposable or limited use items. With over 98,000 alumnae, certainly we could make a difference.

Kathleen Murphy Boyer  
New York Gamma  
Massena, New York

*Editor's Note: Pi Beta Phi is currently practicing many recycling habits. When ever possible, Central Office duplexes materials, therefore using both sides of paper. Paper which has only been used on one side is recycled in the way of memo pads for office use. Also, our computer service, picks up old printouts to be recycled. We have investigated printing The ARROW on recycled paper. At this time it would not be cost efficient to do so. We are, however, now using soy-based inks versus petroleum-based inks to print the magazine.*

I would like to take this opportunity to thank two special Pi Phi sisters for showing me what Pi Phi is all about.

Last year a high school friend of mine moved to New York. Before leaving, I gave her the addresses of two pledge sisters that I knew were living in New York. I found their addresses in the Florida Beta Directory. I told my friend to give them a call and they might be able to help a newcomer. Well, not only did my sisters help, they took my friend under their wings and welcomed her into a great circle of friends.

My friend had a great experience in New York, mostly because of the friendship and support she gained from my Pi Phi sisters. I am so proud of my fraternity and my Pi Phi sisters Mary Brumleve and Edie Barry. They really proved the bonds of wine and blue extend from ocean to ocean.

Holly Hilton Hamer  
Florida Beta  
Palm City, Florida

**Editor's note: This is your page made available to anyone wishing to comment on articles, the magazine or any topic of interest to our readers. Letters must be signed with full name, address and chapter. We reserve the right to edit as needed to space requirements and content.**



Call 1-800 336-1096 to place your order today.

**EXPRESS**

T-SHIRTS, 100% COTTON

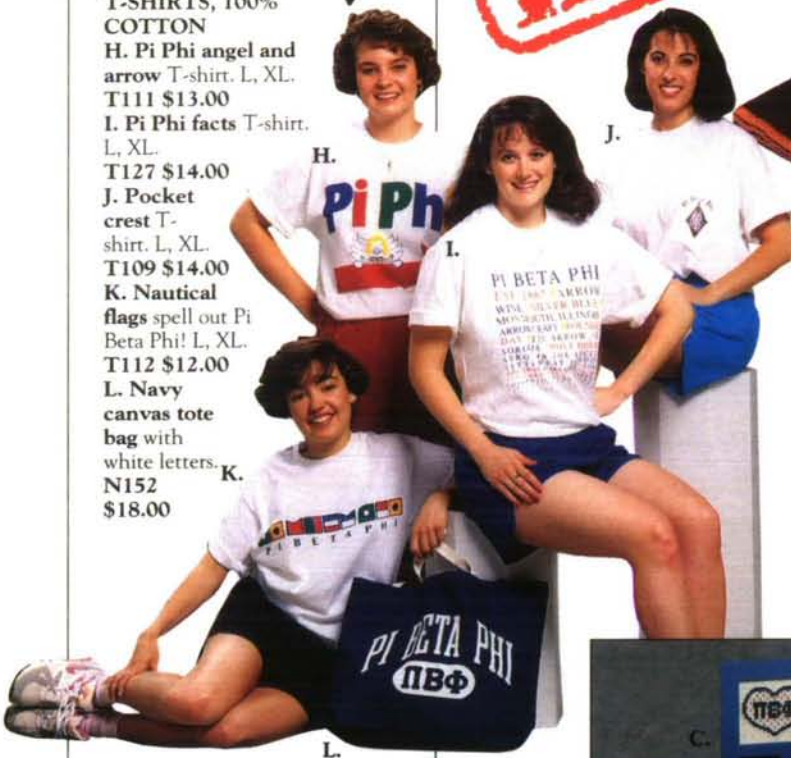
H. Pi Phi angel and arrow T-shirt. L, XL. T111 \$13.00

I. Pi Phi facts T-shirt. L, XL. T127 \$14.00

J. Pocket crest T-shirt. L, XL. T109 \$14.00

K. Nautical flags spell out Pi Beta Phi! L, XL. T112 \$12.00

L. Navy canvas tote bag with white letters. N152 \$18.00



**STERLING SILVER JEWELRY**

S. Cupid and arrow earrings. Pierced only. J100 \$8.50

T. Puffed traditional angel pendant. Also makes a great ornament. J101 \$32.00

U. Traditional angel pendant. J102 \$14.00

V. Traditional angel earrings. Pierced only. J103 \$12.00



The Arrow of Pi Beta Phi

A. White poplin hat with blue  $\pi\beta\phi$ . N175 \$7.00  
 B. Are you ready for some football? Wine wool stadium blanket with gold edging and Greek letters. N174 \$32.00



Put your talents to work with a cross stitch kit for your favorite Pi Phi!

C. Picture frame collage. NW100 \$5.50

D. Sampler pillow that may be personalized. Lace and stuffing not included. NW101 \$10.00

E. "I love  $\pi\beta\phi$ " in ivory frame. NW102 \$7.00

F. "Sisters are friends forever" in heart shaped frame. NW103 \$6.00

G.  $\pi\beta\phi$  and angel in wooden frame. NW104 \$8.00



M. Pink Tee with white and blue Greek letters. L, XL. T129 \$18.50

N. White nylon running shorts with appliqued blue and pink Greek letters. S, M, L, XL. SH115 \$17.00

O. White tank top screened with wine polka dot Pi Beta Phi. L, XL. T128 \$13.00

P. Blue nylon running shorts with wine polka dot arrow. S, M, L, XL. SH116 \$12.00

Q. Russell® biking shorts, available in white, oxford gray and black. S, M, L, XL. SH117 \$9.95

R. Russell® sweatshirt with crest. M, L, XL. SW114 \$29.00

W. Charm pin with five interlocking circles. Can be worn plain or with as many charms as will fit. See item X for arrow charms. J104 \$8.00

X. Arrow charm for pins, bracelets or necklaces. J105 \$3.50 each

Y. Southwestern style arrow pin. J106 \$16.00

Z.  $\pi\beta\phi$  dangle ring. Sizes 5, 6, 7, 8. J107 \$6.50

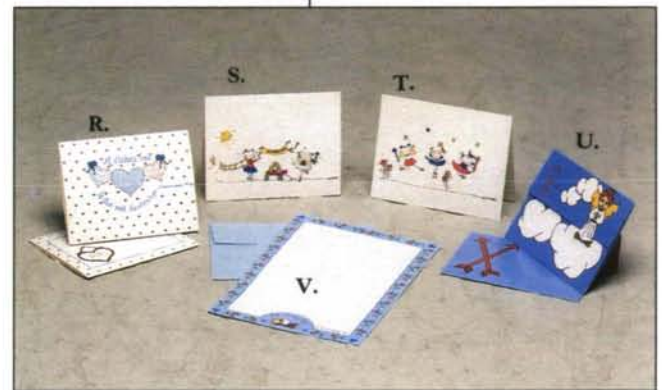
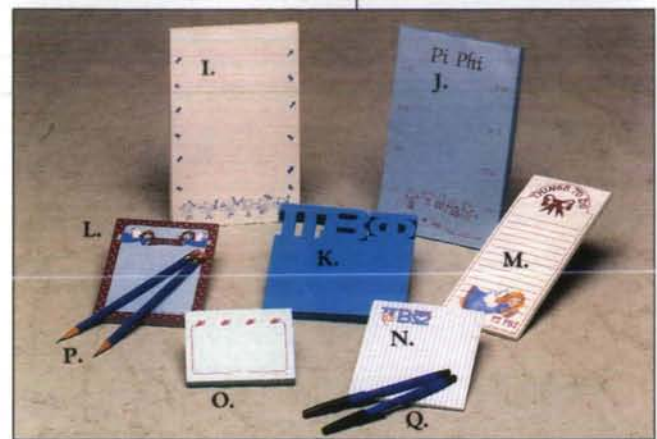






**A.** Nylon  $\pi\beta\phi$  banner. 20" X 30". N160 \$14.00  
**B.** 32 oz. white tumbler with arrow design and Greek letters. N136 Reduced Price \$2.00  
**C.** Squeeze bottle. N171 \$3.50  
**D.** Huggie (Slip on Koozie), blue with angel design. N137 Reduced Price \$2.50  
**E.** Bumpersticker, blue with angel design. N138 \$1.00  
**F.** Magnet, arrow with  $\pi\beta\phi$ . N166 \$2.00  
**G.** License plate frame with blue arrows and Pi Beta Phi. N145 Reduced Price \$3.50  
**H.** Playing cards, wine and white single deck. N155 \$5.00

**F.**  
**I.** Arrow notepad. S100 \$4.50  
**J.** Light blue Pi Phi with angels notepad. S101 \$3.95  
**K.**  $\pi\beta\phi$  diecut notepad. S102 \$4.50  
**L.** Notepad with wine border and angels. S103 \$3.95  
**M.** "Things to do" notepad. S104 \$3.95  
**N.** Pin striped  $\pi\beta\phi$  notepad. S105 \$1.10  
**O.** "Stick 'em" notepad with angels. S106 \$3.00  
**P.** Pencils with Pi Beta Phi. Set of 2. S107 \$1.00  
**Q.** Pen with Pi Beta Phi. S108 \$1.00 each  
**R.** "A sister's love..." foldover notes. 10/pkg. S109 \$3.95



**S.** Girls and wagon notecards with envelopes. 10/pkg. S110 \$3.00  
**T.** Jumping girls notecards with envelopes. 10/pkg. S111 \$3.00

**U.** Angel and arrow foldover notes. 10/pkg. S113 \$6.00  
**V.** Angel and carnation letter sheets with envelopes. 10/pkg. S112 \$5.00

Name \_\_\_\_\_ Daytime Phone \_\_\_\_\_

Address\* \_\_\_\_\_ City \_\_\_\_\_ State \_\_\_\_\_ Zip \_\_\_\_\_

\*If different shipping address is desired, please enclose a note with that address.

Qty.	ITEM NUMBER	DESCRIPTION	ITEM COLOR	TWILL LETTER COLOR	SIZE	ITEM PRICE	TOTAL
Shipping and Handling Charges:							
\$10.00 and under	\$2.50						
\$10.01-\$25.00	\$4.00						
\$25.01-\$50.00	\$5.00						
\$50.01-\$100.00	\$6.50						
Over \$100.00	\$8.00						
METHOD OF PAYMENT				Subtotal			
<input type="checkbox"/> CHECK <input type="checkbox"/> VISA <input type="checkbox"/> MASTERCARD		Card Number	TN Residents add 7.75% sales tax				
		Expiration Date	Shipping & Handling				
Minimum charge card order \$25.00		Signature	TOTAL AMOUNT				

Make checks payable to: Pi Phi Express. Phone orders accepted 9-5 EST, Mon-Fri 1-800-336-1096.

Allow 2-3 weeks for delivery unless otherwise specified. All orders shipped UPS unless otherwise specified. Our merchandise is unconditionally guaranteed. All prices in U.S. dollars. Prices subject to change without notice.

Send completed form and payment to:  
**PI PHI EXPRESS, 576 PARKWAY, GATLINBURG, TN 37738**



# '91-'92 Graduate



★ Kim ★  
Barger

Kim received a Bachelor of Science degree in rhetoric and communication and psychology at the University of Oregon. Kim served **Oregon Alpha** as VP Mental and Chapter President while being involved on campus as coordinator of the recruiting hostess program for the university. A member of Golden Key and Order of Omega, Kim was selected as one of the top five senior Greek women. Kim will be the Resident Graduate Consultant at Marquette University this year. She plans to take classes while being a consultant and then will continue her graduate studies with an emphasis in athletic administration.



★ Tammie ★  
Beckwith

**Illinois Zeta** Tammie is a past VP Moral and Chapter President at the University of Illinois. In 1991 Tammie was awarded 3rd place for Best Chapter President by Panhellenic. Tammie was a demographics major with a minor in marketing and will use her skills working for a marketing company in the Chicago area. Tammie was involved in the Panhellenic Task Force for Philanthropies and wrote for the Greek newspaper. In addition to her campus activities, Tammie spends a great deal of time competing in the unusual sport of curling. A Traveling Graduate Consultant for the upcoming academic year,



★ Jocelyn ★  
Davies

A **Pennsylvania Eta**, Jocelyn graduated from Lafayette College with a Bachelor of Arts degree in psychology. After working for Pi Beta Phi as a Traveling Graduate Consultant, Jocelyn plans to pursue a career in human resources and attend graduate school. Jocelyn was VP Moral and Panhellenic Representative for her chapter, as well as Panhellenic Council President and Rush Chairman for Lafayette. Other activities include Freshman Orientation Counselor and Executive Chair, Student Government Associate Representative and Women's Soccer Club.



★ Brenda ★  
Hoy

Brenda Hoy, **Wyoming Alpha**, has been captain of the University of Wyoming's dance team, Wildfire, for three years. She has done extensive traveling with the team and with an All-American Drill Team. In addition, Brenda traveled with a national company called Dancz America as one of sixteen summer camp instructors. Brenda studied exercise physiology as an undergraduate and plans to attend medical school. Her fraternity experience as Chapter President and VP Mental will be used as Brenda serves Pi Beta Phi as a Traveling Graduate Consultant for the 1991-92 academic year.



# Consultants



★ Jennifer ★  
Peterson

**Iowa Zeta** Jennifer Peterson received a Bachelor of Arts degree in journalism with an emphasis in business from the University of Iowa. She is interested in working in the public relations field after completing her year as a TGC. Former Chapter President, Assistant Rush Chairman and Greek Council Representative, Jennifer was also active in the Student Alumni Association and Public Relations Student Society of America. In addition, Jennifer was a University of Iowa Hospital volunteer. Recently Jennifer was one of twelve elected "Women of Iowa."



★ Denise ★  
Reed

Denise Reed will be the Resident Graduate Consultant for Arizona Gamma at Northern Arizona University. A graduate of the University of Oklahoma, Denise majored in social work with a minor in individual and family development. She plans to obtain a master's degree in the same specialty, though she is also interested in attending law school. Denise was active in the Social Work Undergraduate Association. An **Oklahoma Alpha**, Denise was VP Moral and Chapter Membership Chairman. She also served as Panhellenic Assistant Rush Chairman and Rush Book Activities Editor.



★ Lori ★  
Poveromo

A University of Richmond graduate, Lori Poveromo received a Bachelor of Arts degree in English with a history minor. **Virginia Eta** Lori served her chapter as VP Moral and a member of the Nominating Committee. Lori was involved in Bacchus, Residence Hall Association and Volunteer Action Council on the Richmond campus. The Resident Graduate Consultant for Alabama Alpha, (Birmingham-Southern College) Lori will apply for a student personnel administration graduate program at the end of her employment.



★ Tammy ★  
Romanek

Tammy Romanek was **Nebraska Beta** Chapter Treasurer, Censor and Initiation Chaplin while at the University of Nebraska. A Traveling Graduate Consultant for the upcoming school year, Tammy received a Bachelor of Science degree in marketing and business. Looking to the future, Tammy anticipates using her marketing degree to perform public relations or marketing research for an advertising agency. An avid jazzercise fan, she has some interest in becoming a certified instructor.



## Position Statement on Alcohol

Because of our concern for the health and well-being of our members, the presidents of all 26 National Panhellenic Conference (NPC) groups have agreed to the following:

1. that we are opposed to the misuse of alcohol;
2. that all college chapters, all individual members, and all guests must abide by federal, state/provincial, local, college/university laws and regulations;
3. that it is inadvisable to host a party involving alcohol when the majority of guests attending are under the legal drinking age;
4. that no college chapter funds may be used to purchase alcohol. (Co-sponsors of social events are potentially liable regardless of how the expenses are shared.)

Each NPC group has an alcohol policy and is expected to abide by it. In addition, the presidents expect their chapters to respect the regulations of any NPC co-sponsoring group.

We hope that this agreement will give college chapters the courage and ability to initiate discussion and formulate a Panhellenic stand on the subject of alcohol.

ALPHA CHI OMEGA	<u>Ellen L. VanderBrink</u>	DELTA ZETA	<u>Marvona Gasley Lawlin</u>
ALPHA DELTA PI	<u>Margaret Anne Bundy</u>	GAMMA PHI BETA	<u>Jolene L. Stiver</u>
ALPHA EPSILON PHI	<u>Dana Parkers</u>	KAPPA ALPHA THETA	<u>Janet L. Peters</u>
ALPHA GAMMA DELTA	<u>Lillian L. Henson</u>	KAPPA DELTA	<u>Patricia B. Nieman</u>
ALPHA OMICRON PI	<u>Barbara D. Hunt</u>	KAPPA KAPPA GAMMA	<u>Kay Smith Larson</u>
ALPHA PHI	<u>Virginia B. Stubble</u>	PHI MU	<u>Lynne M. King</u>
ALPHA SIGMA ALPHA	<u>Wiane Y. James</u>	PHI SIGMA SIGMA	<u>Rini A. Nelder</u>
ALPHA SIGMA TAU	<u>Patricia L. Nayfe</u>	PI BETA PHI	<u>Cassidy H. Christenberg</u>
ALPHA XI DELTA	<u>Jayne Kulek Adams</u>	SIGMA DELTA TAU	<u>Karen J. Braverma</u>
CHI OMEGA	<u>Roselyn T. Sathy</u>	SIGMA KAPPA	<u>Sheila A. Barner</u>
DELTA DELTA DELTA	<u>Angela Haskett Driver</u>	SIGMA SIGMA SIGMA	<u>Ann B. Williams</u>
DELTA GAMMA	<u>Marilyn M. Jordan</u>	THETA PHI ALPHA	<u>Theresa M. Koch</u>
DELTA PHI EPSILON	<u>Harriette V. Virsch</u>	ZETA TAU ALPHA	<u>Sherry S. Tilley</u>



# Announcements

## Attention Pi Phi Authors

If you would like to donate two copies of your books to Arrow in the Arctic, I will affix special bookplates and forward them to Central Libraries of the Yukon in Whitehorse and Central Libraries of the the Northwest Territories in Hay River. All topics are of interest, but young peoples books would be particularly welcome. Another terrific tie-in with our Pi Phi "Links to Literacy" program! Thank you in advance for sharing your gift of literacy.

Helen Steeves Jull  
Chairman,  
Canadian Philanthropies Committee  
1318 Quebec Avenue SW  
Calgary, AB CANADA T2T 1G2

## Foundation Director of Development Hired

The Board of Trustees of the Pi Beta Phi Foundation is pleased to announce that Lynn M. Guenzel has been employed as Director of Development for the Foundation. She brings to us over six years of development experience, primarily in the arena of higher education. Lynn has established the Foundation office at Pi Beta Phi Central Office and she is available there to discuss foundation-related matters.

## Alumnae Scholarships Available

If you have been out of school at least two years, plan to pursue a career requiring further education and have evidence of need for scholarship help, consider applying for an Alumnae Continuing Education Scholarship. For information and scholarship application write to:

Jean Nees Tulin  
R.R. 1, Box 73B  
Knoxville, IL 61448

Deadline for the completed application is February 1, 1992.

## HAVE YOU MOVED OR CHANGED YOUR NAME?

Mail this form to Pi Beta Phi Central Office  
7730 Carondelet, Suite 333  
St. Louis, MO 63105

(Please leave label on reverse side when mailing this form.)

NAME IF DIFFERENT FROM ATTACHED LABEL \_\_\_\_\_

MAIDEN NAME \_\_\_\_\_

FORMER MARRIED NAME (if applicable) \_\_\_\_\_

OLD ADDRESS \_\_\_\_\_

Street

City

State

Zip

NEW ADDRESS \_\_\_\_\_

Street

City

State

Zip

CHAPTER \_\_\_\_\_ YEAR OF INITIATION \_\_\_\_\_

If you are currently an officer in the Fraternity, please check below and give title so that we may also update our officer lists.

- National \_\_\_\_\_  Provincial \_\_\_\_\_  Alumnae Club \_\_\_\_\_  
 Other \_\_\_\_\_

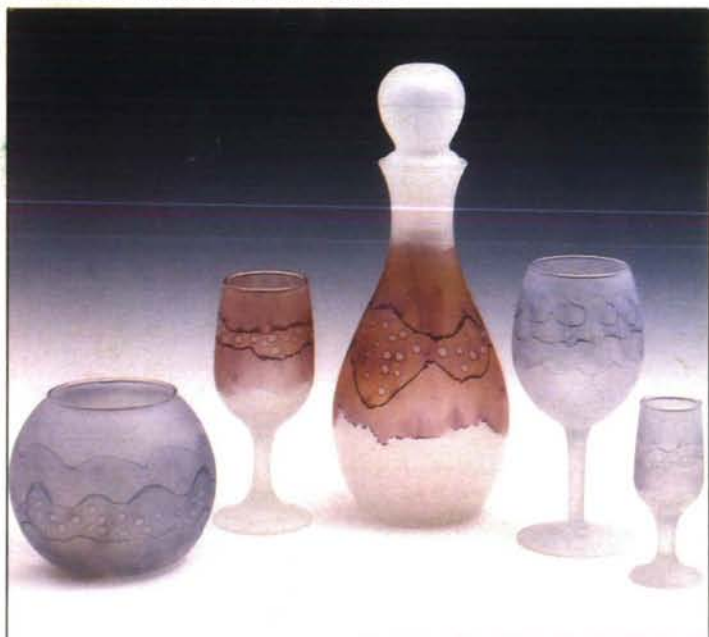


# ARROWCRAFT → The Pi Beta Phi Shop ←

Presents a Variety of Summer Pastels.



The new mat, Petals, will create a pastel palette for your table. It is woven of chintz strips cut from a lovely floral print. When accompanied by the floral napkin, it lends a note of casual elegance for dining. You may choose a solid color napkin in pink, green or white. Anodized aluminum napkin rings in colors called saffron and moonstone. Museum quality hand split white oak basket with muted colors on the collar. Placemat and napkins by Arrowcraft weavers.



Swing glass is etched, colored and kiln fired for permanency. Offered in the two colors shown; each piece is slightly different. Pattern appears to capture effervescence. Left to right-candle globe/vase, small goblet, decanter, large goblet and cordial glass. Swing glass is dishwasher safe. Please specify Blue or rose when ordering.



Potpourri wreaths of dried flowers. On the left is Wild Rose constructed of wild roses, purple statice and globe amaranth; the essence is wild rose. Country vanilla is the fragrance of the pale yellow strawflower, white statice and baby's breath. Both are backed with moss. Specify rose or yellow on order. Sachet pouches and hair rosettes/barrettes of hand painted silk in jewel tones or apricot/peach. Use jewel or apricot on order.



**ARROWCRAFT**  
576 Parkway  
Gatlinburg, TN 37738

Celebrating 65 years 1991  
Telephone orders (615) 436-4604  
9-5 Eastern Standard Time  
No Orders Saturday, Please  
1-800-336-1096

NAME \_\_\_\_\_  
ADDRESS \_\_\_\_\_  
CITY/STATE \_\_\_\_\_  
DAYTIME PHONE \_\_\_\_\_ SIGNATURE \_\_\_\_\_

VISA  MC

QTY	DESCRIPTION OF ITEM	COLOR	Cost/Each	TOTAL
	Petals mat 13x19 woven chintz		12.50	
	Petals napkin 18x18 hemmed chintz		5.50	
	Fringe napkin 10x10		3.50	
	Napkin ring-Anodized aluminum/sterling		9.00	
	Hand split oak basket 6" h		110.00	
	Potpourri wreath 7 1/2" d		15.50	
	Sachet pouch		9.00	
	Hair ornament		20.00	
	Candle globe/vase 5" d		13.00	
	Small goblet 6 1/2" h		13.00	
	Decanter 11 1/2" h		25.00	
	Large goblet 7 1/2" h		15.00	
	Cordial glass 4 1/2" h		10.00	

**SHIPPING RATES:** (All orders shipped UPS unless otherwise specified.) Up to \$10.00, \$2.50; \$10.01 up to \$25.00, \$4.00; \$25.01 up to \$50.00, \$5.00; \$50.01 up to \$100.00, \$6.50; Over \$100.00, \$8.00. Out of Continental United States & Oversize Items, Actual Shipping Charges. Prices in Ad are valid through August.

Merchandise Total	
Shipping (See Chart)	
TN Residents Add 7 1/2% Tax	
<b>TOTAL AMOUNT</b>	

To Pi Phi Parents:

Your daughter's magazine is sent to her home address while she is in college and we hope that you enjoy reading it. If she is no longer in college, however, and is not living at home, please send her new permanent address to Pi Beta Phi Central Office, 7730 Carondelet, Suite 333, St. Louis, Missouri 63105

Postmaster::

Send notice of undeliverable copies on Form 3579 to Pi Beta Phi, 7730 Carondelet, Suite 333, St. Louis, MO 63105