

Summer 1994

THE **ARROW**  
of Pi Beta Phi



Pi Beta Phi  
Alumnae:  
Cultivating  
Our Future

Philanthropy, broadly defined, means love of humanity. It serves a dual purpose: to alleviate suffering and to improve the quality of life. Philanthropy encompasses many pursuits, such as community service, voluntary giving, fund raising, grant making and other forms of stewardship. It has long been a hallmark of North American culture.

In the 1830s after a trip to the United States, French statesman and philosopher Alexis de Tocqueville wrote:

"These Americans are the most peculiar people in the world. You'll not believe me when I tell you how they behave. In a local community in their country a citizen may conceive of some need which is not being met. What does he do? He goes across the street and discusses it with his neighbor. Then what happens? A committee comes into existence and the committee begins functioning in behalf of the need."

With such altruism already prevalent, it is small wonder that our twelve Founders, thirty-some years later, included as an objective in the Preamble of I.C. Sorosis "... and promote the happiness of humanity." Those simple words are as relevant today as they were one hundred and twenty-seven years ago. Now, in 1994, members of Pi Beta Phi honor and encourage that objective by volunteering time and money in service to benefit both society and the Fraternity.

On almost every campus where there is a chapter of Pi Beta Phi, members devote time and energy to support the chapter's local philanthropies as well as those of other Greek groups. For example, at Lafayette College, Pi Phi co-sponsors with Kappa Delta Rho a dance marathon to benefit the Children's Home and the Spring Garden School. Not long ago, the chapter was notified that the Home was honoring the groups by naming parts of its building the Pi Beta Phi and Kappa Delta Rho Wing. Simpson College Pi Phis have an "adopt-a-grandparent" program and visit and interact with lonely older people. These are but two of the varied activities by which chapter members "promote the happiness of humanity."

Alumnae also contribute in a variety of ways to the betterment of their communities. With profits from the Sign of the Arrow Shop, the St. Louis Club has contributed many thousands of dollars to area social agencies. The Dallas Club is purchasing and renovating a structure to become the Pi Beta Phi Art and Literacy House of St. Philip's School and

Community Center. The Nashville Club's Christmas Village has raised over \$1 million since 1961 for the Bill Wilkerson Hearing and Speech Center. Both the Houston and Southern Fairfield County Clubs have established and are maintaining libraries in local children's hospitals. Other clubs and individual alumna participate in equally impressive projects.

In addition to their community service, Pi Phis also contribute financial support to the Pi Beta Phi Foundation and Fraternity philanthropies, which, in turn, benefit the membership and society as a whole.

Since its incorporation on February 21, 1990, the Pi Beta Phi Foundation has achieved prominence among Greek philanthropic foundations. Much of this early success is the result of the bequest from Grand President Emeritus Marianne Reid Wild. During the past year, the Foundation made substantial grants to the Fraternity to fund the "Links to Literacy Programming Guide," the revision of the "Friend to Friend Alcohol and Other Drugs Awareness Program" and a video entitled "Sex, Alcohol and Self-Esteem"; sponsored convention and leadership workshop speakers; awarded scholarships and fellowships of greater dollar value than ever before; assisted with the Campaign for Arrowmont; conducted informational events in various cities; and participated in fund raising.

The Fraternity's major philanthropy, Arrowmont School of Arts and Crafts, is fulfilling its mission of "enriching lives through art." Annually, the School enrolls in a variety of courses nearly 2,000 students of all ages and levels of ability. At the present time, the School is in the final phase of a capital campaign to raise \$2.3 million. Response to the campaign, under the direction of former Grand President Jean Wirths Scott, has been positive, and the results are exciting. A new dormitory is completed. New painting, drawing and wood studios will be constructed. The Children's and the Artist-in-Residence Programs and the Gallery have received funding. The School, the Foundation and the Fraternity are deeply grateful to those who have already responded to the Campaign's requests. There are still giving opportunities available and a challenge grant of \$352,500 to be met.

Arrow in the Arctic, under the Canadian Philanthropies Committee, makes yearly gifts to the Yellowknife Library in the Northwest Territories and the White Horse Library in the Yukon for



**Betty Blades Lofton, Grand Vice President of Philanthropies**

the purchase of otherwise-unaffordable "extras." The Committee periodically awards a Canadian Arrowmont Awareness Scholarship.

Holt House, a memorial to Pi Phi's founding, is rich in fraternity heritage. Open to visitors weekday afternoons and other times by appointment, the House is used by surrounding chapters for pledging and initiation and by local alumnae and the community for meetings, wedding receptions and other small gatherings.

Links to Literacy, started in 1989 as a literacy service project, has experienced phenomenal growth. At the last count, 100 chapters, 77 clubs and uncounted individual members are volunteering to build a more literate society. It has been determined that over 100,000 children and adults benefit from the efforts of Links to Literacy volunteers.

Student loans are available to both graduate and undergraduate members of Pi Beta Phi at a favorable interest rate. Students needing financial assistance for their education are urged to investigate a Pi Phi loan.

The Fraternity is justifiably proud of the many contributions its members are making in their communities and to Pi Phi philanthropies. Please remember that Fraternity philanthropies depend upon the generosity of the membership, because only Pi Phis contribute to Pi Phi philanthropies. Every gift is deeply appreciated, because each one is an investment in the difference these philanthropies are making and in the results they are achieving.

Philanthropy enriches an individual's life beyond measure. As Albert Schweitzer said:

"...the only ones among you who will be really happy are those who will have sought and found how to serve."

# Contents

Summer 1994

Volume 110 Number 4

**Pi Beta Phi Alumnae:  
Cultivating our Future-**  
As we approach the 21st century, Pi Beta Phi prepares to nurture and meet the needs of its alumnae while unearthing a world of opportunities for them.  
*pg. 4*



**Carolyn Helman  
Lichtenberg Crest Award  
Winners-**  
Read about the four women recognized for outstanding contributions to their career or community with this prestigious award.  
*pg. 8*

**Evelyn Peters Kyle and  
Emma Harper Turner  
Award Winners-**  
Alumnae from provinces across the country are honored for exceptional service and leadership within alumnae clubs.  
*pg. 10*



**Scholarship and  
Fellowship Winners-**  
Meet the undergraduates and alumnae who are the first recipients of scholarships and fellowships funded by the Pi Beta Phi Foundation.  
*pg. 25*

**Arrowcraft-**  
The shop ventures into an association with the Southern Highland Handicraft Guild.  
*pg. 59*



**Graduate Consultants-**  
Pi Beta Phi hires seven young women to bring knowledge, inspiration and guidance to chapters from coast to coast.  
*pg. 60*

## Departments

75-year Members .....	13
Alumnae News .....	14
News of Arrowmont .....	18
Foundation .....	22
Chapter Membership Chairmen .....	34
Collegiate News .....	42
Links to Literacy .....	48
4.0 Students .....	50
In Memoriam .....	53
Fraternity Directory .....	56
Announcements .....	63

**Arrow Editor-** Jennifer Moeller Barcus  
**Assistant-** Elizabeth Ann Gilkison

Pi Beta Phi Central Office  
7730 Carondelet, Suite 333  
St. Louis, MO 63105  
314/727-7338  
FAX: 314/727-8049

Correspondence of an editorial nature is to be addressed to the editor.

### Copy Deadlines

**Spring-Dec. 1**      **Fall-June 1**  
**Summer-April 1**    **Winter-Oct. 1**

### Address Changes and In Memoriam

Pi Beta Phi Central Office  
7730 Carondelet, Suite 333  
St. Louis, MO 63105

**The ARROW** of Pi Beta Phi (USPS 032-540) is published quarterly by Pi Beta Phi Fraternity, 7730 Carondelet, Suite 333, St. Louis, MO 63105-3328. Second class postage paid at St. Louis, MO. POSTMASTER: Send address changes to The ARROW of Pi Beta Phi, 7730 Carondelet, Suite 333, St. Louis, MO 63105-3328.

### FOUNDERS OF THE FRATERNITY

Emma Brownlee Kilgore (1848-1924)  
Margaret Campbell (1846-1936)  
Libbie Brook Gaddis (1850-1933)  
Ada Bruen Grier (1848-1924)  
Clara Brownlee Hutchinson (1850-1931)  
Fannie Whitenack Libbey (1848-1941)  
Rosa Moore (1848-1924)  
Jennie Nicol, M.D. (1845-1881)  
Inez Smith Soule (1846-1941)  
Fannie Thomson (1848-1868)  
Jennie Horne Turnbull (1846-1932)  
Nancy Black Wallace (1846-1918)

**Founded 1867**

# CULTIVATING



# OUR FUTURE

The roots of Pi Beta Phi's alumnae department began to grow in the late 1800s, when delegates to the 1893 Convention approved the organization of the National Alumnae Association, the first organization of its kind to be formed by any national women's Greek letter fraternity.

From its inception, it was apparent that the alumnae department could not merely mimic the collegiate experience on a campus. Former Grand President Emma Harper Turner, leader of the alumnae movement, saw a great future for an alumnae department through the formation of alumnae "clubs." Miss Turner felt that an alumnae "chapter" was not suited to the needs of the older woman.

Indeed, Emma Harper Turner was correct. Over the years Pi Beta Phi adapted its alumnae programming and

activities to meet the needs of its members, as well as to accommodate the trends of the times. A good example of this flexibility took place in the war stricken 1940s. The *Century of Friendship in Pi Beta Phi* gives this account of those years. "With all Americans mobilized for war the alumnae contributed enthusiastically to our country's wartime needs. Clubs and individual Pi Phis bought and sold war stamps and bonds, knitted thousands of afghan squares, mufflers, and helmets, and served in army hospitals and U.S.O. posts. In fact, there was no phase of war activity wherein the name of Pi Beta Phi could not be found."

As we rapidly approach the 21st century, members may ask if Pi Beta Phi is prepared to meet the needs of today's women. Where does the Fraternity fit in with the likes of "Baby Boomers" and "Baby Busters"? How does it identify with the twenty-somethings of "Generation X" and women in the "Sandwich Generation" caring for children and parents in tandem?

Can Pi Beta Phi be relevant to women in the corporate world where 60 hour work weeks are fast becoming a norm; among day care centers, civic centers and retirement centers; between careers and carpools?

The answer is a resounding yes! Pi Beta Phi is adapting to the changes in our society. This is a two-step commitment- first on behalf of the international Fraternity to adjust; and second on the part of the member to participate. The Fraternity will continue to cultivate its relationship with alumnae, as members take advantage of the world of opportunities before them.

In 1990, a Task Force on Alumnae Programming was formed to study alumnae membership and evaluate existing programs and future trends in order to recommend methods to enhance, encourage and strengthen alumnae participation. The following areas were identified as the goals of the alumnae department:

- Communication
- Service to collegiate chapters
- Service to community
- Networking
- Help for members in need
- Interest in the fraternity
- Membership records
- Financial support

From the Task Force came many recommendations on how to better educate and inform our members of the opportunities awaiting them.

## Alumnae Recruitment and Retention Guide

To foster growth, suggestions for reaching out and touching a group of women whose profile includes recent graduates and Golden Arrows; full-time career women and professional volunteers; international residents and small town retirees were included in a new Alumnae Recruitment and Retention Guide. The guide was introduced at the Alumnae Regional Leadership Retreats this spring and contains ideas and examples of how to recruit and retain members. From outlining recruitment goals, to describing available resources, to the "how tos" of recruitment and retention, the guide expands upon many of the

same principles and membership recruitment skills learned as a collegian and used daily in social situations. This new communication tool will be a key in bringing new members to alumnae clubs and keeping current members involved and interested in the Fraternity.

## Alumnae Regional Leadership Retreats

Providing additional leadership training for alumnae in non-convention years was one of the recommendations of the Task Force. In the spring of 1992, a pilot program of two Alumnae Regional Leadership Retreats was instituted. This spring, the effort was launched around the country. Between mid-February and mid-April ten Alumnae Regional Leadership Retreats were held, in which two to four alumnae provinces were grouped together. "Focused on T.E.A.M. (Together Everyone Achieves More) Spirit," agendas were specific to the needs and desires of provinces involved. The retreats afforded alumnae an opportunity to discuss concerns and suggestions with a Grand Council member, alumnae director, province officers and alumnae club representatives from surrounding provinces. Open interaction and exchange of ideas was a priority, allowing plenty of time for sharing.

## Expansion of Directions Program

Since 1985, hundreds of Pi Phis have received job networking assistance through Pi Beta Phi's Directions Program. The Alumnae Task Force proposed that the program be expanded to allow greater participation, be more comprehensive and include mentoring. Through Directions, Pi Phis who are making job changes, location changes, looking for their first position or are reentering the job market are given the opportunity to communicate with other Pi Phis in the same field. In addition, Pi Phis who are new to a city or simply want information for a given locale can connect with other Pi Phis to find out more about their community, various neighborhoods and school districts, as well as make contacts for medical needs, real estate, community service projects and more. The new focus of the program widens the communication channels between members, while providing a valuable service.

## Pi Phi Forever... Count On It! Video

Planting the seed of alumnae involvement needs to begin early. Today's graduating seniors are offered a picture of alumnae life through the videotape, "Pi Phi Forever...Count On It!" In this presentation, a diverse group of women with different vocations, backgrounds and ages presents a panoramic view of alumnae life. Proposed by the Alumnae Task Force, funding for the video was approved because Grand Council concurred that nothing was more important to the future of the Fraternity than increasing the involvement of new graduates. Videos and written support materials are presented each spring to encourage a life-long involvement with Pi Phi.

Currently the Fraternity recognizes 337 clubs, 11 junior and evening groups, 38 pockets and four Carnation Circles. For the twelfth year, Pi Beta Phi honored 75-year members, bringing the number of those recognized to 388. The total number of the Order of the Golden Arrow 50-year members climbed to 13,462. There are several international alumnae extension contacts, and Pi Beta Phi is participating in a Panhellenic effort to establish Alumnae Panhellenics on military bases abroad.

Alumnae Regional Leadership Retreats, the new Alumnae Recruitment and Retention Guide, "Pi Phi Forever...Count On It!" video are all valuable tools which communicate the benefits of lifetime commitment to Pi Beta Phi. Once the decision to be involved in Fraternity activities has been made, choices are plentiful.

## Club Involvement

When the alumnae department first began 101 years ago, Emma Harper Turner wrote an article entitled, "Why Should Alumnae Remain Active in the Fraternity?" In it she commented, "Wherever a sufficient number reside let them organize an Alumnae Association that they may keep better informed of the fraternity's condition, put themselves into intimate contact with the organization and in every way spread its reputation and influence."

Today there are junior and evening groups as well as special interest groups within existing alumnae clubs. In areas or communities where there is an absence of a chartered alumnae club and where there are three but not more than thirty resident alumnae, Pi Phi pockets may be formed. In 1989 carnation circles were established for Pi Phis who have expressed a desire and willingness to meet together in retirement areas.



## Chapter Involvement

Each year hundreds of Pi Phi alumnae volunteer to work with our collegiate chapters as members of an Alumnae Advisory Committee or House Corporation Board. These women serve as advisors, wearing any number of hats which might include counselor, problem solver, evaluator, listener, teacher, role model and friend. They offer the benefit of their college and Pi Phi experience to a new generation of undergraduates. Serving the Fraternity in this way is an extraordinary opportunity to work along with the bright, young women of today. At the same time, alumnae experience the joy of returning what others have given to them.

If an alumna does not live in close proximity to a collegiate chapter or does not have the time to contribute to an AAC or HC, there are other ways to assist collegians. Providing information on potential members is one way to assist chapters, thus playing a vital and active role in the continual growth of the Fraternity.

## Community Involvement

Pi Beta Phi is a vehicle for women to serve others. Within alumnae circles, members of Pi Beta Phi are impacting

their communities. Clubs sponsor an array of philanthropic events each year from telethons to walk-a-thons, book drives to clothing drives and blood drives. From the tens of thousands of dollars raised for large charitable organizations to the holiday gifts collected for a local needy family, Pi Beta Phi continues to offer a means for women to get involved in their community. Clubs have embraced Pi Beta Phi's international service project, "Links to Literacy," by donating time, supplies and facilities needed for literacy efforts. Through altruistic work, Pi Phis, as individuals and as a whole, make a difference in the society in which they live.

## Assistance in Time of Need

By supporting Pi Beta Phi, alumnae are investing in the future of the Fraternity and its members. In the coming academic year, 49 women will benefit from financial aid offered through scholarships, fellowships and loans.

Twelve women were recipients of gifts of love from the Emma Harper Turner Memorial Fund during 1993-94. Women who found themselves in extreme financial distress through the loss

of a spouse, catastrophic illness of a child or other tragic circumstances were given assistance. Financial support is either in the form of a one-time gift, or monthly payments for a one-year period. It is the hope of the Emma Harper Turner Committee that the checks will be of some assistance and make life a bit easier.

## Friendship

Reaping the greatest benefit of membership Pi Phi alumnae thrive on ties of friendship. Through the years, the opportunities available to members have evolved and changed, programs have come and gone, but the one constant has always been the friendship offered. The genuine love and concern for one another, the sense of belonging, mutual support and guidance will always be extended to each member of the Fraternity.

The Pi Beta Phi experience goes beyond college days. As a matter of fact, college is just the beginning, when the seed of this tremendous encounter is planted. Pi Beta Phi alumnae cultivate and nurture the ongoing relationship with the Fraternity and see the rewards blossom before them.

## Cultivating Pi Beta Phi's Future Through Alumnae-At-Large

Annual alumnae dues ensure that Pi Beta Phi will continue to provide the friendship, leadership and scholarship it has for more than 127 years. Pi Beta Phi alumnae in a club area are given the opportunity to pay alumnae dues through their alumnae club. For alumnae who live in an area without an alumnae club, dues may be paid directly to Central Office through a new program called Alumnae-At-Large. Members will receive:

- \* Pi Beta Phi Alumnae Membership Card
- \* Fraternity Focus, alumnae newsletter
- \* "Pi Beta Phi Alumna" window decal

Name: \_\_\_\_\_

Address: \_\_\_\_\_

City: \_\_\_\_\_ State: \_\_\_\_\_ Zip: \_\_\_\_\_

Chapter: \_\_\_\_\_

Enclosed is my check for \$12 payable to Pi Beta Phi Fraternity, for international alumnae dues.  
(Dues are not deductible for federal tax purposes.)

Send check, along with the completed form to:  
Pi Beta Phi Central Office,  
7730 Carondelet, Suite 333,  
St. Louis, MO 63105

### For Office Use Only

Sales Code \_\_\_\_\_

Province No. \_\_\_\_\_

Ref No. \_\_\_\_\_

Check No. \_\_\_\_\_

Amount \_\_\_\_\_

1994 Winners  
of the  
**CAROLYN  
HELMAN  
LICHTENBERG  
CREST  
AWARD**



for  
*Outstanding  
Alumnae*



**Ruth Collins Sharp Altshuler**



**Jane Grimmer Baker**



**Ruth Henderson Walsh McIntyre**



**Eileen Heckart Yankee**

**Eileen Heckart Yankee**

**Ohio Beta  
Ohio State University  
Profession: Actress**

For five decades, Eileen Heckart Yankee has been one of the nation's leading figures in the world of drama. After graduating from The Ohio State University, where she served two years as president of Ohio Beta, she embarked on a professional acting career that led to acclaim in film, on Broadway and in television.

Eileen received the coveted Oscar, the motion picture industry's highest award, for her performance in "Butterflies Are Free" and the Golden Globe Award and an Oscar nomination for "The Bad Seed."

On the Broadway stage she was recognized for her performance in "Picnic" with a Tony nomination, the Theatre World Awards and the Outer Circle Award. Her work in "The Dark at the Top of the Stairs," earned a Tony nomination and the New York Drama Critics Award. She also received a Tony nomination and the Donaldson Award for "The Bad Seed."

The Broadway production of "Butterflies Are Free" brought her a Tony nomination, the Aegis Award and the March of Dimes Award.

Eileen received television's top honor, the Emmy, for "Save Me a Place at Forest Lawn" and two Emmy nominations for her role as "Aunt Flo" on "The Mary Tyler Moore Show."

She has honorary doctorates from The Ohio State University, Niagara University and Sacred Heart University. Other honors include: the Ohio Governors Award, the Ohio State Centennial Award and the Sylvania Television Award.



## Jane Grimmer Baker

**Indiana Delta  
Purdue University  
San Mateo, California  
Community: Civic Leader**

Jane served the city of San Mateo, California as a member of the Council beginning in April 1973. She was the second woman in the city's history to run for the Council, and was the first woman elected mayor. She served five terms on the City Council (20 years) and was mayor of the city six times. Upon her retirement from City Council, she was honored by the establishment of an American Association of University Women's (AAUW) Educational Foundation International Scholarship endowment of \$100,000 in her name and that of another woman retiring from the Council at the same time.

She is currently representing the cities of San Mateo County on Metropolitan Transportation Commission and State Job Training Coordinating Council. Her position as Chairman of the MTC has Jane working with representatives from the nine counties comprising the San Francisco Bay area as the Commission plans the coordination of all rail and bus transportation throughout the area. In addition to chairing the Commission as a whole, she also chairs the SFO Airport Extension subcommittee. On the State Job Training Coordinating Council, Jane chairs the Marketing Work Committee.

In addition, Jane is a foundation member and former director of California Elected Women for Research and Education, past president of San Mateo Branch of AAUW, and director of the Advisory Council of the National League of Cities.

Jane attributes her interest in community service and much of her ability to work with a variety of people to her years as a Pi Phi collegian at Purdue. Her fellow Indiana Delta members encouraged her to enter a debate contest which she won. This gave her the confidence to speak on future occasions when she was convinced of the value of an issue or viewpoint. She has continued to speak out with the courage of her convictions, offering practical solutions to community concerns or problems.

## Ruth Henderson Walsh McIntyre

**South Carolina Alpha  
University of South Carolina  
Profession: Broadcast Journalist**

In her 35 years as a television broadcaster, Ruth McIntyre has achieved milestones. Not only has she won almost every award in her field, but she was one of the first women to do on-air work in a male dominated profession. Ruth paved the way for women broadcasters when she anchored the first Columbia, South Carolina announcement on President John F. Kennedy's assassination.

She has interviewed five Presidents of the United States, earned eight Emmys in documentary work as well as news reporting, interviewed three heads of state, and covered two national political conventions. Ruth's list of broadcasting awards is extensive, including an Excellence of Media Award, more than 20 Sigma Delta Chi honors, several Golden Mike Awards, the Washington State Women's Press Award and the State Spokesman Award. She also was selected as one of "100 Newsmakers of the Year" in Time Magazine's feature on Seattle.

A South Carolina Alpha, Ruth received her B.A. from the University of South Carolina. During her spare time, Ruth is working on her master's degree in international communications and her second undergraduate degree in German. She is also earning credentials for teaching "English as a second language" and "English as a foreign language" in third world countries.

Ruth shares her time with countless charities. For the past 12 years, Ruth served in various positions for the Washington State Bar Association, a position appointed by the Washington State Supreme Court. For 25 years she has raised funds for Muscular Dystrophy, United Cerebral Palsy and the Variety Club. During her career, she has hosted 15 telethons for these organizations. She dedicates her time to more than 13 boards and memberships, one of which is the National Task Force on Prison Reform—a Presidential appointment.

## Ruth Collins Sharp Altshuler

**Texas Beta  
Southern Methodist University  
Community: Civic Leader**

Ruth Altshuler's string of "firsts" reveal her pioneering spirit at a time when women's roles were still evolving. Ruth is the first woman ever elected to the board of the Salvation Army. From 1983-1987 she was Chairman of the Dallas Advisory Board. She is currently vice chairman of the National Advisory Board. A board member of the United Way of America, she was the first woman Campaign Chairman for the United Way in 1986. The first woman ever elected to the Board of Goodwill Industries, Ruth is also the first woman elected to the board of Dallas Citizens Council.

A Texas Beta, Ruth is a graduate of Southern Methodist University. Among her numerous awards, Ruth was given the Distinguished Alumna Award by her alma mater and was recognized as Outstanding Trustee in the Nation by the Association of Governing Boards of Colleges and Universities for her service to the Board of Trustees of Southern Methodist University.

In July of 1991, she was honored by the Texas State House of Representatives for her volunteer work throughout the state. In 1993 she received the Public Citizen of the Year Award by the Dallas unit of the National Association of Social Workers and the Susan G. Komen Award for Private Philanthropy. An outstanding member of her community, Ruth is the 1982 recipient of the Linz Award for Dallas' most outstanding citizen. The Dallas Women's Chapter of Dallas Business and Professional Women's Club named her Humanitarian of the Year in 1985, and in 1987 she was elected to Texas Women's Hall of Fame.

For all her nationally recognized leadership accomplishments, Ruth has a warm, approachable manner and generously shares her time, wisdom and other skills and resources with a variety of groups. She is asked to travel to all parts of the country to deliver her inspiring and motivational message on the importance of volunteering and community service.

## Evelyn Peters Kyle Award – Province Winners

Originally presented in 1971 by the Alumnae Directors and the Alumnae Province Presidents, this annual award is for club service.

The intent of this award is to honor an alumna for exceptional service to an alumnae club by performing those duties often unrecognized; for example, service on telephone committees, arrangements, hospitality, etc. Judging criteria include: promoting the ideals of Pi Beta Phi, reliability, initiative, consistent contribution to well-being of her club, unstinting loyalty.



**Patricia Wolfe Davis**  
Southern Fairfield  
County, Connecticut  
Alpha Province



**Janice Bray Stubin**  
Northern Virginia  
Delta Province



**Jane Edwards  
Holbrook**  
Fort Lauderdale, Florida  
Eta Province



**Julie Talley Hooton**  
North Woodward,  
Michigan  
Theta Province



**Dorothy Stacy Farley**  
Cleveland East  
Iota Province



**Patricia Sue Altman  
Potts**  
Fort Wayne, Indiana  
Lambda Province



**Susan Mills  
Stretchberry**  
Indianapolis S. Suburban  
Mu Province



**Judith Davis  
Whitacre**  
Arlington Heights,  
Illinois  
Nu Province



**Cherrill Street Bold**  
Minneapolis, Minnesota  
Pi Province



**Sally Vinnedge Haake**  
Kansas City, Missouri/  
Shawnee Mission,  
Kansas  
Sigma Province



**Benita Elliott Adams**  
Tulsa, Oklahoma  
Upsilon Province



**Jerry Bass Jennings**  
Oklahoma City  
Phi Province



**Nelwyn Harman  
Reagan**  
Waco, Texas  
Chi Province



**Suzanne Schmidt  
Braden**  
Houston, Texas  
Psi Province



**Lucille McCrillis  
Ryland**  
Denver, Colorado  
Alpha-Beta Province



**Joan Hanson  
Degerstrom**  
Spokane, Washington  
Alpha-Gamma Province

Evelyn Peters Kyle Award – Province Winners



**Mary Anne Riddick  
Cesario**  
San Jose, California  
Alpha-Epsilon Province



**Yvonne Neal Shaw**  
Whittier Area,  
California  
Alpha-Zeta Province



**Ethel Volgenau Cone**  
Del Sol North,  
California  
Alpha-Eta Province



NOT PICTURED:

**Martha Rader  
Minogue**  
Northern New Jersey  
Beta Province

**Mary Grothjahn  
Hendrickson**  
Brevard County, Florida  
Zeta Province

**Helen Francis Paul**  
Monmouth, Illinois  
Xi Province

**Joyce Johnson  
Mammel**  
Omaha, Nebraska  
Rho Province

**Frances Bruning  
Murney**  
Portland, Oregon  
Alpha-Delta Province

Emma Harper Turner Award – Province Winners



**Anne Varrone**  
New Haven,  
Connecticut  
Alpha Province



**Allison Brown  
McGeough**  
Northern New Jersey  
Beta Province



**Karen Shelton  
Chevalier**  
Northern Virginia  
Delta Province



**Carol Hagaman Miller**  
Sandhills of North  
Carolina  
Epsilon Province



**Carol Sievers Crockett**  
Orlando-Winter Park,  
Florida  
Zeta Province



**Margaret Gardner  
Christiansen**  
Naples, Florida  
Eta Province



**Isabelle Williams  
Clark**  
North Woodward,  
Michigan  
Theta Province



**Nancy Hitchcock  
Harvey**  
Cleveland East  
Iota Province



**Jennifer RoBards**  
Louisville, Kentucky  
Mu Province



**Marilyn Dressler  
Duncan**  
Hinsdale-Naperville,  
Illinois  
Nu Province

## Emma Harper Turner Award – Province Winners

Announced at the 1993 Convention in recognition of the establishment of the Alumnae Department in 1893, this annual award is for club leadership.

The intent of this award is to honor an alumna for exceptional leadership on the local club level in Pi Beta Phi. Serving as an effective alumnae club officer, aiding in recruiting and maintaining dues-paying members, acting as a role model in promoting Pi Phi loyalty, displaying creativity and flexibility in programming, encouraging long-range planning in her club, and broadening the scope of local alumnae by promoting the international aspects of the Fraternity are criteria for the award.



**Nancy Morarity Michiels**  
New Orleans  
Omicron Province



**Julie Newton McLaughlin**  
Tulsa, Oklahoma  
Upsilon Province



**Margaret George Houston**  
Colorado Springs,  
Colorado  
Alpha-Beta Province

NOT PICTURED:

**Janet Kay Rasmussen Ferris**  
Portland, Oregon  
Alpha-Delta Province



**Lila Smith Lightfoot**  
Madison, Wisconsin  
Pi Province



**Bette Burke MacKellar**  
Oklahoma City,  
Oklahoma  
Phi Province



**Christina "Teena" Davis James**  
Palo Alto, California  
Alpha-Epsilon Province



**Linda Oakeson Dobry**  
Omaha, Nebraska  
Rho Province



**Sharlene Smith Gaither**  
Richardson-Plano, Texas  
Chi Province



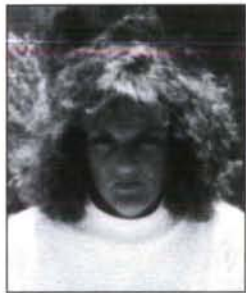
**Barbara Beaumont Dreibelbis**  
Central Orange  
County, California  
Alpha-Zeta Province



**Georgene Carr Fenley**  
Kansas City, Missouri/  
Shawnee Mission,  
Kansas  
Sigma Province



**Mary Carpenter Hogan**  
Houston, Texas  
Psi Province



**Margaret Gordon Gooding**  
Tucson, Arizona  
Alpha-Eta Province

# 75-Year Members



1919-1994

**Doris Nazor Alexander**  
Ohio Alpha  
Holland, Michigan

**Muryl Doherty Allison**  
Colorado Alpha  
Denver, Colorado

**K. Esther Gilbert Arthmann**  
Iowa Alpha  
Center Sandwich, New Hampshire

**Grace Gilmore Avery**  
Iowa Zeta  
New Brunswick, New Jersey

**Louine McLarty Barnes**  
Texas Beta  
Arlington, Texas

**Berenice Jones Bichler**  
Iowa Zeta  
Eureka, Montana

**Irene Stevens Boysen**  
Iowa Zeta  
Washington, D.C.

**Winifred Dysart Brown**  
Missouri Alpha  
Ardmore, Oklahoma

**Bernece Graham Browning**  
Illinois Beta  
Annawan, Illinois

**Marjory Murray Dunn**  
Missouri Gamma  
Alloway, New Jersey

**Hazel Storz Eaton**  
Michigan Beta  
Tucson, Arizona

**Dorothea Edwards**  
Iowa Beta  
Indianola, Iowa

**Maude McDonald Ekstrand**  
Iowa Alpha  
Canton, Illinois

**Esther L. Fitts**  
Massachusetts Alpha  
Houlton, Maine

**Genevieve Morrow Folger**  
Iowa Alpha  
Asheville, North Carolina

**Corinne Holmes Goodson**  
Arkansas Alpha  
Houston, Texas

**Kathryn Kline Harris**  
Illinois Eta  
Riverside, California

**Marion Prather Hays**  
Arkansas Alpha  
Bethesda, Maryland

**Pauline Shutters Heine**  
Indiana Alpha  
Bartlesville, Oklahoma

**Sadie (Sally) Callen Hinsey**  
Iowa Alpha  
Hinsdale, Illinois

**Isabel Camp Jackson**  
Texas Alpha  
Denver, Colorado

**Kathryn Hammond Kelley**  
Minnesota Alpha  
Wayzata, Minnesota

**Iolyn Chester Koch**  
Wisconsin Beta  
Berlin, Wisconsin

**Ellen Olson Layton**  
Illinois Beta  
Knoxville, Illinois

**Lucile Bobb Lomison**  
Illinois Epsilon  
Santa Monica, California

**Ella Falck Long**  
Pennsylvania Alpha  
Galesburg, Illinois

**Iris Wood Hicks Marquess**  
Wyoming Alpha,  
*Affiliated Nebraska Beta*  
Big Horn, Wyoming

**Lucille Pinkley Matthias**  
Washington Beta  
Newport Beach, California

**Edith Hibbard McClure**  
Illinois Zeta  
Pine City, Minnesota

**Emily Wurzbach Mickler**  
Texas Alpha  
San Antonio, Texas

**Helen Mattley Palmer**  
Oregon Beta  
Forest Grove, Oregon

**Edwinna Reed Perkins**  
Kansas Alpha  
Santa Monica, California

**Sidney Grogan Roberdeau**  
Texas Alpha  
Nacogdoches, Texas

**Ruth Asher Rumbold**  
Oklahoma Alpha  
Rochester, New York

**Queen Smith**  
Missouri Alpha  
Columbia, Missouri

**Valerie Jenkins Smith**  
Massachusetts Alpha  
Hyannis, Massachusetts

**Dorothy Weaver Spedick**  
Illinois Zeta  
Mount Dora, Florida

**Juanita Bass Trumbo**  
Louisiana Alpha  
Fayetteville, Arkansas

**Gwen Meyerhoff Waggoner**  
Iowa Beta  
Lincoln, Nebraska

**Grace Blauvelt Welles**  
New York Delta  
Orient, New York

**Amy Linderth Westveld**  
Illinois Beta  
Boca Raton, Florida

**Edith Whiting**  
Iowa Alpha  
Mount Pleasant, Iowa

**Louise Otis Whitman**  
Iowa Gamma  
Walnut Creek, California

**Ruth Greenwaldt Wilson**  
Iowa Gamma  
San Antonio, Texas

**Hattie Stokes Wootters**  
Texas Beta  
Crockett, Texas



**On July 9, 1993 following an exhilarating two-day hike, Oregon Alpha J'Anny Thacker Nelson, Iowa Zeta Nancy Dunlop Lund and California Kappa Dana Hughes reached the summit of Mt. Whitney, located in California's Sierra Nevada Mountain Range.**

Norma Richardson Loughridge, retiring Chi Alumnae Province President, received a warm welcome at the **Dallas Alumnae Club's** "September Kick-off Meeting." Anne Mewhinney Monning, Alumnae Club President, presented Norma "twin tees" for her new Grandbabies, our "Halo Heirs"! Norma and Anne are both Texas Betas.

The **Illinois Fox River Valley Alumnae Club** celebrated fifty years of friendship in Pi Beta Phi. This year, all of their scheduled meetings and events have revolved around their anniversary theme. In the fall, an anniversary celebration was held in honor of their fiftieth year as an alumnae club. The evening reunited Pi Phis who had joined the club shortly after its founding in 1943.

The **Houston Alumnae Club** was very pleased to host Susan Garrett Baker, wife of former Secretary of State James Baker, at their February meeting. Addressing a record number of Pi Phis, this Texas Alpha delighted her audience with personal and poignant reflections and observations of world politics during the Reagan and Bush administrations.

Chocolate, valentines, balloons, a program about the importance of angels and a serenade of "Let Me Call You Sweetheart," all helped make the February 14 Golden Arrows' Valentine Luncheon a very special event for **Tulsa Alumnae Club** members.

Except for event chairman Benita Elliott Adams and three other hostesses, the luncheon was a Golden Arrows only affair. The luncheon was held at The Garden, a Tulsa tea room.

The **Orlando-Winter Park Alumnae Club** added a few of their own ideas to the Founders' Day program developed by Georgene Iles Robb of the Cedar Rapids Alumnae Club. Their table decorations were pictures of the Founders

joined in a circle and surrounding a candle. Twelve undergraduates acted as Founders and dressed in appropriate attire with an alum acting as the present-day Pi Phi. Each of the twelve actives wore her Founders' name badge. After the program, Founders sat in reserved seats at separate tables and could talk about themselves to table mates. The philanthropy program was part of the club's May meeting and small gifts were given to alumnae who answered questions about the Founders.

Each year, the **Cleveland East Alumnae Club** adopts a family during the holiday season. Kim Svette Earley, chairman of this project, worked with Health Hill Hospital, selecting a family from the hospital's "Family Cheer" program. This year's family was comprised of a woman struggling to care not only for her own daughter, but also her eight nieces and nephews. The alumnae club raised more than \$1,200, which was used to purchase food (for Thanksgiving, Christmas and Easter dinner), toys and books, clothing and a Christmas tree with all the trimmings. Donations also included bikes for all the children, a dryer and a microwave oven.

**Missouri Beta Madeline Payne Longstreet** is the subject of a ten-page article featuring her silkscreen botanical fern series in subscribers' copies of the May issue of *Better Homes and Gardens*. Readers may order the fern botanicals through the magazine. Madeline uses her suburban St. Louis home as a studio. Madeline also held a private showing of a new wildflower series in her home in April.

Twenty-four Texas A&M graduate teaching assistants were honored by the university for their outstanding classroom skills. **New Mexico Beta Rebecca Pollard**, who is working on her Ph.D. in educational psychology,

was one of the recipients who received \$500 through the McDonald's Awards program. Rebecca is a member of the **Brazos Valley, Texas Alumnae Club** serving as president from 1991-93.

The **Manchester, Connecticut Area Alumnae Club** President Laurie Dailey compiled a brilliantly colored 14-page yearbook full of Pi Phi historical updates, schedules, and other information. Membership and attendance increased significantly due to her public relations approach to the mailing. With the theme for the year, Alice in Wonderland, the club held several theme activities such as Alice in Arrowmont, raising \$440 for the Founders' Floor, and Christmas in Wonderland at a member's historic home artfully decorated in a Victorian angel theme with a cookie swap. At year's end, University of Connecticut seniors were welcomed into the club and presented with recognition pins and a rousing program of "What Alumnae Club Means to Me!"

The **Kansas City, Missouri/Shawnee Mission, Kansas Alumnae Club** has been sponsoring theater tours for more than 30 years. This past May, the club sponsored a London Theater Tour. The trip included three nights in the village of St. Ives (Cornwall) and five nights in London at the Grosvenor House Hotel on Park Lane, as well as the best of London theater. Trips are open to all, not just



**Former Grand President and proud grandmother Sarahjane Paulson Vanasse participated in the initiation of her granddaughter Melissa Anne Vaux (third from left). Other family members in attendance included Alumnae Province President Joy Vanasse Goodenough, Sara Goodenough Vadset, and Melissa's mother Julianne Vanasse Vaux. All five women are initiates of Washington Beta.**

Pi Phis. This October, the club is sponsoring a New York Theater Tour. The package includes four nights at the Waldorf-Astoria Hotel, tickets for four Broadway shows, and an optional three day extension. The proceeds benefit Arrowmont as well as local philanthropies. For more information, contact tour chairman Ann Angle Booth Wilson, 9216 Pawnee Lane, Leawood, KS 66206.

**Elizabeth Lang-Miers, Missouri Alpha**, was elected chair of the Dallas Bar Association Board of Directors for 1994. A member of the board since 1987 and former secretary-treasurer, Elizabeth most recently chaired the ad hoc "Meet Your Judges" Committee as a new program in 1993. She also served as chair of the Lawyer Referral Service and Media Relations Committees. Elizabeth chaired the Lawyers as Parents Committee for the Dallas Association of Young Lawyers and Texas Young Lawyers Association. She is a fellow of the Dallas Bar and Texas Bar Foundations and member of the Dallas Women Lawyers Association. She belongs to the Missouri Bar Association, and the American Bar Association's Section of Labor and Employment Law/Employee Rights and Responsibilities Committee. A member of Leadership Dallas and Leadership Texas, Elizabeth chaired the Advisory Board of the Women's Resource Center last year and served on the board of the Metropolitan YWCA, chairing the Family of the Year Luncheon. She has also been active on the board of Way Back House and in the Dallas County and Texas Medical Society Auxiliaries; she has chaired the physicians' malpractice and litigation support committee.

Last December, at the age of 88, **Nebraska Beta Mary Hall Robinson** became the oldest student ever to earn an undergraduate degree at the University of Nebraska-Lincoln. Mary attended the University of Nebraska-Lincoln in 1923. She left college after her junior year, leaving her 25 hours short of graduating. After reading an article last year about an older man who finished his degree, Mary decided to finish her degree also. She has done a variety of volunteer work, including three years at the Nebraska State Historical Society and at the Veterans Administration Medical Center in Lincoln. Some of her volunteer work, as well as an extensive genealogy pro-

ject, is being allowed as credit toward her bachelor of arts degree. Mary is a longtime member of the Lincoln, Nebraska Alumnae Club.

After being elected to her second term as a member of the Girl Scout National Board, **West Virginia Alpha Sally Porter Roberts** was featured in the News Register, a Wheeling, West Virginia newspaper. The national board of the Girl Scouts consists of 50 members elected at-large. The board is selected to represent the broadest possible array of cultural, geographic and racial diversity, ensuring that all females are seen, heard, involved and supported at every level of scouting.

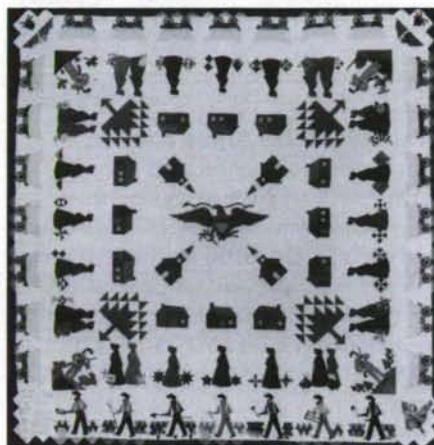
The **Tulsa, Oklahoma Alumnae Club** held their third annual Hot Tamale Hoe-Down fund-raiser in February. The evening included a southwest-style dinner and music. A silent auction, consisting of a wide variety of items, and a live auction that included a trip to San Antonio courtesy of Southwest Airlines were held. Approximately 80 percent of the profits raised from the Hot Tamale Hoe-Down were contributed to The Little Light House. Tulsa Pi Phis have given generously to The Little Light House for nearly 20 years. The Little Light House, a development center for handicapped children, was co-founded in 1972 by Pi Beta Phi alumna Marcia Mobley Mitchell. The balance of the profits earned were given to Pi Beta Phi philanthropies.

The **San Mateo County, California Alumnae Club** held their annual Cookie Shine in February. During the event, the club presented California Beta Kelly Werner with a scholarship. The scholarship is awarded by the club on the basis of need, service to the chapter, grades and community service.

Last summer, **Louisiana Beta Lynn McCary Thomas** participated in a marathon that took her to the top of Pikes Peak. Lynn participates in a group of women runners who call themselves Marathon Moms. The group has participated in such popular marathons as Boston and the Goodwill Games in Seattle. On behalf of Marathon Moms, Lynn took the Pike's Peak challenge. Called America's Ultimate Challenge, the 26.3 mile race started at 6,000 feet, climbed 13 miles to 14,110 feet and then back down the mountain. Adding to the difficulty of the race was the rugged terrain the run-

ners had to navigate, with much of the race taking place on trails rather than roads.

**Tennessee Beta Nancy Fawn Wilkerson Diehl** and her husband Joe traveled to Papua New Guinea last August. Nancy, who has ventured around the globe, shares slides and lectures about her travels to various groups.



This heritage quilt was made by **Iowa Beta Mary Pemble Barton** and won first prize at the Iowa State Fair. Some of the fabrics used in the quilt are 100 years old. They were pieced together to tell the historic migration to Iowa. This quilt took Mary seven years to finish. Mary is a beautiful quilter and a well-known researcher of quilts. For two decades she has gained a national reputation for dating quilts and determining where the quilts were made. She recently donated 67 quilts of her collection, hundreds of fabric samples, laces and trims, quilt patterns, images of quilts, fashion pictures, household hints and old advertisements to the Des Moines, Iowa State Historical Museum. The museum recently designed an exhibit called "Patterns of Learning: from the Mary Barton Quilt Research Collection." Her generous donation of historic items, dated 1840-1950, will give quilters a unique opportunity to learn how to determine the approximate age of old quilts they own, and to learn about quilt history. Experts claim the exhibition will be the most complete and comprehensive source of information of historic quilts and textiles in the United States.



Last fall, Idaho Alpha Bonnie Burns Fisher was named the University of Idaho's Vandal Booster President, the first woman to be given this title in the university's athletic support organization. She had previously been honored by the university in 1990 as the National Vandal Booster of the year, again a first for a woman. Gender equity in sports is one of Bonnie's projects. She also sits on the Foundation Board of Directors for the University of Idaho.



Indiana Delta Lolitia Beaty Bache, Louisiana Alpha Cassie O'Neill McWilliam and Indiana Beta Lynn Deninno Doering were part of a team representing the United States in a long-distance running competition in Japan. Lolitia was team manager and Cassie and Lynn were part of the U.S. team selected to compete. Each of the six team members ran a portion of the 26.2 mile course in the 1993 International Chiba Ekiden (Ekiden is a Japanese word for marathon relay). The U.S. team finished fourth among the 16 countries competing.



Kentucky Beta Dr. Mary Hume Neal, Michigan Beta Betty Eaton Thum and Michigan Beta Hazel Storz Eaton, three generations of Pi Phi, gathered at the christening of Katherine Neal last summer.



The Oklahoma Alpha class of 1962 held their first reunion at the Pi Phi house at the University of Oklahoma where all ten attendees celebrated their 50th birthdays.

## Nashville Club's Philanthropic Efforts Continue

The Pi Beta Phi Rehabilitation Institute at the Bill Wilkerson Center in Nashville, Tennessee, marked five successful years of service in October. An open house celebrating the event was host to over 150 staff members, patients, former patients and members of the Pi Beta Phi Alumnae Club. Started in January 1988 with major support from the Pi Beta Phi Alumnae Club of Nashville, the Rehabilitation Institute provides an intensive, individualized treatment program for persons with brain injuries caused by accidents or strokes.

Services at the outpatient facility include physical therapy, occupational therapy, speech and language therapy, counseling and a wide range of "cognitive" therapies including attention, concentration, memory, categorization, judgement and problem solving skills. Therapists help patients learn strategies to help them return to work, school, or more independent home living.

Approximately 15 to 20 patients are enrolled in the Rehabilitation Institute at one time. The program has seen 159 patients in its five years of service and has sent 42 percent back to work, 28 percent back to school, and 27 percent home with increased living independence. Ninety-five percent of the clients who were discharged from the Institute intending to go back to work are still successfully on the job. A full 100 percent of the clients who went back to school after their discharge are either still in school or have graduated.

In 1961, Christmas Village was created by Nashville Pi Beta Phi alumnae as their major philanthropic effort. The Bill Wilkerson Hearing and Speech Center is the primary beneficiary of Christmas Village. Since inception, the Village has raised over \$1 million to support the Center's efforts in improving the quality of life for the communicatively handicapped.

More than 250 merchants participate in Christmas Village. A variety of seasonal and gift items are offered, including Christmas ornaments and stockings, toys, wreaths, baskets, children and adult clothing, plants, jewelry, foods, ceramics and pottery and other artist crafts.

Christmas Village is organized and operated solely through the volunteer effort of the Nashville Pi Beta Phi Alumnae Club to benefit the Bill Wilkerson Hearing and Speech Center and other Pi Beta Phi philanthropies. Through the years more than \$200,000 has been donated to Pi Beta Phi's nationally recognized Arrowmont School of Arts and Crafts in Gatlinburg.



Nancy Martin Tice, vice president and Judy Fingerle Simmons, president of the Nashville Alumnae Club with Santa.





The University of Utah Alumni Association bestowed its highest honor, the Distinguished Alumnus Award, this year to Utah Alpha Sally Rich Burbidge. Sally has been very involved with the Salt Lake City Alumnae Club and the Utah Alpha Chapter for many years.



Alberta Alpha Alice Payne served as the 1992-93 president of the Canadian Society of Petroleum Geologists. A senior geologist with Gulf Resources, Alice was the first woman to serve as president of the CSPG since its founding in 1928, reported Charlene Yarrow in the Summer 1993 issue of "New Trail," the University of Alberta's alumni magazine. In her position as president, Alice was responsible for overseeing publications, continuing education programs, field trips, awards, conferences and symposia that help geologists in the petroleum field achieve excellence. Last June, the CSPG hosted 6,000 visitors to the American Association of Petroleum Geologists' convention in Calgary. Alice is an active member of the Calgary Alumnae Club.

## Alaskan Pi Phi Aids in Bird Rehabilitation

The Alaska Raptor Rehabilitation Center, located in Sitka, Alaska, was formed in 1980 by a group of dedicated, caring volunteers interested in returning injured birds to the wild. Although the center's beginnings were extremely modest, committed volunteers have helped the center grow. The ARRC is a private, non-profit organization specializing in the care of injured birds of prey, primarily the bald eagle. More than 150 volunteers of the ARRC give of their time and talents and are dedicated to bird preservation through treatment, education and research.

Montana Alpha Vicky Vosburg is the staff veterinarian for the ARRC. She graduated from Montana State University with a degree in biology and received her D.V.M. from Colorado State University. Vicky's responsibilities at the center include performing surgery, keeping records and planning the care for each bird. She also spends time giving tours and telling people about the medical side of the center. Educating the public is an important step toward saving birds and other wild animals. In her spare time, Vicky enjoys whale watching and cross country skiing.

Over the past thirteen years, the ARRC has helped hundreds of birds return to the skies over Alaska. Many more have been restored to health and placed in educational and captive breeding programs. These birds had sustained injuries so severe that restoring the physical excellence required for life in the wild was not possible. Although they are not free, these birds will perform valuable jobs such as raising young who will be released into areas where populations are dwindling. Some will also help their fellow feathered friends by educating people about themselves and the effects humans have on their lives.

There are now more than 50 bald eagles, the primary patient, treated each year at the center. The rate of rehabilitation is at 70 percent of their patients. In 1992 the ARRC successfully treated and released 15 bald eagles, a red tailed hawk, a sharp-shinned hawk, a northern goshawk, a great horned owl, two western screech owls and many non-raptor

species. The ARRC also placed six non-releasable bald eagles at other wildlife facilities around the country in education and captive breeding programs.

The center hopes that the knowledge shared from working with the birds will awaken people to the significance of raptors in the environment and to the impact that civilization has upon them.

ARRC's three-part mission includes treatment of injured birds, education of the public concerning bird habitat and ecology, and the support of research pertaining to the ecology and medical treatment of birds.



Montana Alpha Vicky Vosburg holds Buddy a five-year old American bald eagle with a very unique injury. His life has been patterned after humans rather than eagles. All indications are that Buddy was illegally taken from his nest as a chick and raised by humans who probably did not realize that all young birds "imprint" on their care giver, permanently. His "parents" were people, so Buddy naturally came to think of himself as a person and did not learn to be an eagle. Buddy's home today is the Alaska Raptor Rehabilitation Center. In order to educate people about human activities that harm birds, the ARRC takes Buddy on the road for school visits and other events. Buddy is a very valuable tool in educational presentations and has already visited Georgia, California, Florida, Washington, Massachusetts, South Carolina, New York, Maryland, Illinois and, of course, Alaska.

# ARROWMONT

by Cynthia Huff

## Stoney Lamar is Challenge Consultant

**I**nternationally known wood sculptor Stoney Lamar has been named as Challenge Consultant and is traveling the country to help Arrowmont raise \$352,500 for its proposed wood studio.

The money is being raised to match a Windgate Foundation challenge grant which was awarded in late 1993 and must be matched by December 1994.



Stoney resides in Saluda, North Carolina and is familiar to many woodturners. It is his knowledge of the field, his professionalism, and his long

association with Arrowmont that prompted Arrowmont Director Sandy Blain to invite him to act as consultant.

Stoney began his relationship with Arrowmont as a student in 1982, was in attendance when the American Association of Woodturners (AAW) was founded at Arrowmont in 1985, and has lead numerous workshops at the School since 1988.

Despite a busy schedule as Chairman of the Board of Trustees of the Southern Highland Handicraft Guild, Stoney manages to squeeze in time for his own studio work. The Smithsonian Institution's Renwick Gallery gave his efforts its stamp of approval by inviting him to lecture about his artwork in December 1992.



**A guardian angel rests on the head of "Man With Protection," a ceramic sculpture by Debra Waddell Fritts of Roswell, Georgia. The sculpture and "Treasure the Dream," a weaving by Sharon Marcus of Portland, Oregon were part of "Myths: New Form, New Function."**

His 1993 engagements included exhibiting at the Chicago International New Art Forms Exposition and participating in the prestigious Philadelphia Craft Show.

Stoney's artistic output will undoubtedly be lessened in 1994 due to his many speaking engagements on Arrowmont's behalf. "I made four presentations to five Florida AAW Chapters in March, and the response was very favorable. At every place I visited," Stoney said, "there was someone who had studied at Arrowmont and could give a testimonial about how great it was."

## Myths: New Form, New Function

**I**t has been said that when myth meets myth, the collision is very real. Arrowmont explored that theory by presenting an exhibition about old and new myths and their shape and meaning in today's society.

On view February 25 through May 14, "Myths: New Form, New Function" was juried by Jane Kessler of Charlotte, North Carolina. According to Kessler, "Myths have been used to explain what is otherwise unexplainable and to describe natural and mystical forces by naming them and giving them form."

The 68 works in the national exhibition illuminated numerous myths from the sacred to the suburban - St. Anthony shared the spotlight with St. Nicholas.

In her juror's statement, Kessler noted that a surprising number of artists successfully incorporated ancient mythological figures into contemporary events. "The fact that there were so many responses - 799 entries by 300 artists - indicated to me that contemporary artists are extremely interested in expressing their ideas about myths, beliefs and ideologies."

As consultant, Stoney is sharing information about Arrowmont's wood program with woodworking groups, collectors, galleries, interested individuals and woodworking supply companies. Upcoming commitments include meetings with collectors in Washington, D.C., a gallery presentation in Atlanta, Georgia, appearances at the National AAW Conference in Colorado, and regional AAW conferences in Maryland and Arizona.

## Children's Lives Enriched Through Art

**T**he closing reception of "Children's and Young Adult Art Exhibition"

February 19 marked the formal end of the 1994 children's classes program.

High levels of energy were evident in each of the six classes that met on Saturdays, January 15 through February 12. Ninety students ranging in age from 4 to 18 participated in painting, pottery, clay, sculpture and cyanotype classes taught by resident artists Lisa Bare, Mary Perry, Brad Cantrell, Ed Lockett, Anne Smith, Rosalie Spice and Winnie Utterback.

Now having completed its tenth year, Arrowmont's children's classes are firmly established in the Gatlinburg community and routinely attract students from five surrounding counties. Many area children are veterans of the program, and more than a few received their Arrowmont class as a Christmas present. This year 15 students attended with full scholarships provided by funds from Kevin and Janice Kincaid Clifford and the Gatlinburg Kiwanis Club.

Assistant Director Bill Griffith began his tenure as coordinator of children and young adult classes in mid-1987. "We've grown from three classes and 30 students in 1988, to approximately 90 students in seven classes," Bill pointed out.

"The thing that I find most interesting about children's classes, after being involved with them for seven years, is that I've seen students return for five years. It's fun to watch them grow up in Arrowmont's program and move into other classes," he said.

The ultimate example is one student who started coming to Arrowmont before he could drive, at age fifteen. "His grandmother would drive him. He continued to come to Saturday morning classes for several years, and then went into our summer classes for adults. After a few summer classes, he participated in our work study program. This year he came and volunteered to be a teacher's assistant for children's pottery classes, so the circle is complete. That's very rewarding for me," Bill said.



A young student prepares to dip a wheel-thrown pot into a bucket of glaze. "Clay and the Potter's Wheel" continues to be the most popular of Arrowmont's children's classes.



Students executed five paintings in five weeks during "Adventures in Creative Painting" taught by children's classes instructor Ed Lockett.



Instructor Lisa Line guides Gatlinburg-Pittman High School students through a linear drawing assignment. The one-day class was part of nine "Outreach Grant Workshops" organized by Arrowmont Resident Artist Mary Perry. Between January and May 1994, more than 400 students, grades 2-12, participated in the outreach program.



## Wood – The Campaign's Challenge

The excitement of a \$352,500 challenge grant from the private Windgate Charitable Foundation for a new wood studio has created a "campaign within a campaign" and provided new challenges for the Arrowmont Campaign Committee. As the overall \$2.3 million Campaign for Arrowmont advances toward its goal, the Committee is determined to match the wood challenge by raising the needed \$352,500 designated for that purpose by the challenge deadline, December 1, 1994.

The wood studio has been a component since the inception of the overall campaign...but on a much smaller scale than what now is intended. No longer a remodel of existing inadequate facilities, plans call for a new, larger and more diverse facility. The wood complex will be constructed at a projected cost of \$808,000 in what now is a parking lot facing the front entrance to Arrowmont's main classroom building.

From one existing, narrow, 1700 square foot room, physical facilities will expand to a 8900 square foot complex that will include three wood studios, finishing room, auditorium, gallery, faculty office, studio for an artist-in-residence and two center courtyards. From the one crowded classroom accommodating a maximum of 14 students, studio space will increase to provide for three larger classes held simultaneously. From a program supporting student emphasis on lathe-turned utilitarian pieces, the new studio design opens the door to accommodate other artists whose interests lie in exploring other forms of the vessel and in creating larger, sculptural pieces or furniture. Director Sandra Blain, Arizona Beta, says, "We will have facilities and a comprehensive program for wood artists and craftsmen of all interests, skills and age levels."

## Historical Perspective

Earliest formal wood instruction at Settlement School can be traced back to 1914 when Caroline McKnight Hughes, Minnesota Alpha 1893, set up the school's industrial work department with five woodworking benches. Fifty-two men and boys from the mountain community enrolled in these early wood classes.

In 1929, O.J. Mattil "...fitted up an old barn near the school building as a shop...and employed from one to five boys to refinish old furniture and reproduce crickets, bookshelves and tables. An ARROW article states, "There is no doubt but that this has had a great influence on the furniture makers of the community, for they are now bringing in [to be sold at Arrowcraft] better furniture than ever before."

According to former Arrowmont Director Marian Heard, Tennessee Gamma, classes during the summer workshop program in the '40s and '50s focused on toy making. In 1973, the Staff House garage was converted to a woodworking building and the first classes in wood relief were taught. The building was renovated in 1981-82, and a small outside covered workspace was added soon thereafter.

As the founding site of the Association of American Woodturners in 1985, as a learning center for wood students from around the world, and as a host to an internationally known faculty whose work is exhibited at the Smithsonian's Renwick Gallery, the woodturning Center in Philadelphia and in known wood and other visual arts galleries and museums around the world, Arrowmont will carry on the School's traditions in wood and expects to enter the last half of this decade with a wood program and facility of unequaled stature.

## Athelia Sweet Clingan, Kansas Beta

*"...faculty and staff have a keen sense of student needs."*

From a student of snorkeling, to outdoor survival experiences, to health and fitness, to decorative metal, to woodturning...Athelia Sweet Clingan, Kansas Beta, is a five-time connoisseur of Elderhostel programs at various locations. As a former member of the Arrowmont Board of Governors (1985-91), she agrees to being biased toward the Arrowmont facility and says, "Studying at Arrowmont, with its outstanding faculty and friendly on-site personnel, is just like going home and back to family. Both faculty and staff have a keen sense of student needs."

Two bowls and several small wooden Christmas ornaments are the physical evidence of Athelia's time spent in an Arrowmont woodturning class, but more important to her is her newly acquired admiration for the techniques of the craft and for the skills of the artists. She describes the experience as "humbling."

Athelia says, "My father was in the lumber business and, as a child, I toured the redwood forests and the lumber mills in the Northwest. Wood has always been an important part of my life." Her curiosity about woodturning led her to Alan Lacer's class in 1992. "It was a full and crowded class of 14 students, with no room to create a piece of any size and little room to arrange chairs for the teacher's demonstrations," she says. "Oh, if we'd only had the luxury of what is planned for the new studio building!" Looking at the architect's drawing, Athelia is especially focused on the auditorium. She says, "The potential for an



assembly of students to hear a lecture or see a demonstration by a teacher from another class certainly will expand the learning process."

## Merry-Beth Noble, California Delta

*"...there is so much to learn; one interest leads to another."*

Traditionally, wood is known as an art medium of interest to males. The ratio of female to male students in an Arrowmont wood class supports this. Women average less than 20 percent. Merry-Beth Noble, California Delta, was the only woman in Ray Ferguson's Laminated and Staved Turned Vessels class.

"In my profession," Merry-Beth says, "I don't even think about being a female. I must have the self confidence to fight the stereotype if I am to survive in the field." By vocation, Merry-Beth is a set designer for feature films, television and theater productions. She designs, she drafts, she builds. "There very definitely is a place for women in production design," she says. "It takes getting in there and doing it. I love my job!"

The daughter of Pi Beta Phi Director of Pledge Development Ruth Neel Noble, California Delta, Merry-Beth's undergraduate major while at UCLA was art, with an emphasis in mixed media, sculpture and performance art. Her reason for taking Ray Ferguson's class was "...to branch out from my conceptual training into



something more construction oriented." In her profession, whether she creates or she communicates with builders and others who will do the creating,

Merry-Beth knows she must be able to talk knowledgeably about every material, every method of construction and every tool to be used. "I cannot stop taking classes," she says. "There is so much to learn and one interest leads to another. Every movie and every movie set is different."

Merry-Beth's interest in decorating fuels her interest in large, three-dimensional sculptural pieces and in furniture design. To take another class at Arrowmont is a logical next step. Someday, Arrowmont's wood program will have played a part in her success when she walks to the Academy Awards stage to accept her Oscar for Best Art Director.

## Renee Henry, Washington Beta

*"...pride in Pi Beta Phi for furthering educational opportunities in the arts."*

"I wish all Pi Phis could see Arrowmont from the inside out as I have," says Washington architect Renee Henry, Washington Beta. "Arrowmont is an incredible art facility."

Renee was a student in Liam O'Neill's woodturning class where, she says, "I was not hindered by any preconceived notions, bad habits or prior knowledge of woodturning. I just listened and learned. It was a friendly environment." Renee enjoyed the camaraderie among students and says, "I appreciated other art forms and what students were doing in other classes like quilting... but, they went home with small pieces of a much larger project. I went home, set four completed bowls on the shelf, stepped back and was able to say, I made those." As a Pi Phi and Arrowmont student, Renee says she "...felt pride in myself for what I was able to accomplish, pride in the quality of the Arrowmont program and a tremendous pride in Pi Beta Phi for furthering educational opportunities in the arts."

From her Collegiate Province President mother, Nancy Heglar Henry, Washington Beta, and then as a Pi Phi collegian, Renee "grew up" with Arrowmont. It was only natural that her love of art be furthered in the Pi Phi facility. Her first experience in wood came as an eighth grader when she boycotted the traditional-for-girls home economics class and selected wood shop. Later, through the Arrowmont experience, her appreciation for wood grew to include a respect for the creative process itself and for the amount of patience it takes to transform an object from a fresh cut, moist piece of wood to the designed and aged completed project.

Renee is excited about plans for Arrowmont's new wood studio and is intrigued by the design that incorporates three functionally different studios into one complex. She easily sees herself in the Large Object Studio learning new techniques as a furniture designer...or maybe she will take another class from Liam O'Neill in the new Lathe Studio...or perhaps she will create other functional pieces in the Carving Studio. One thing is certain, she will find a way to repeat her Arrowmont experience in wood.



## Jane Houchens Tuten, Tennessee Beta

*"...an exceptional rapport between faculty and students."*

As part of her 1983 spring officer visit to Arrowmont, Former Grand Vice President of Philanthropies Jane Houchens Tuten, Tennessee Beta, joined



a class carving household kitchen items - everything from trays to serving plates to utensils. Jane made a large wooden serving spoon. She says, "I was so proud of my accomplishment that I showed it to anyone who would look. I even took it for show and tell on my Pi Phi chapter visits."

Now, eleven years later, Jane says, "Every time I use the spoon, I think of Arrowmont and the exceptional rapport between faculty and students. For a week, the studio was home to artists with a wide range of levels of skill. I'm sure I was at the bottom, but I was never made to feel like the neophyte."

"The freedom to create was an enjoyable outlet," says Jane, whose background was in computer training for IBM. Why did she select instruction in wood? "It was not something readily available at home and it was a way to experience Arrowmont as a student, not just as a Pi Phi officer."

When discussing plans for Arrowmont's wood studio, Jane credits Sandy Blain, Director, with the vision to reach out in new directions to incorporate new trends in Arrowmont programming. "The new studio will provide an opportunity for a broadened selection of

class offerings. It shows a responsiveness to student needs and a continuing commitment to Arrowmont's purpose... a credit both to the School and to the Fraternity," Jane says.



## Friendship Fund Transfers to Foundation

**L**ook carefully at your next Friendship Fund mailing. The return address will say Pi Beta Phi Foundation not Pi Beta Phi Fraternity. This change will be significant to Friendship Fund donors.

The Pi Beta Phi Foundation qualifies as a public charity under Internal Revenue Service Code 501(c)(3) making the entire amount of your Friendship Fund donation tax-deductible to the full extent of the law. In addition, many corporations will match employees' charitable gifts made to a public charity.

Responsibility for the Friendship Fund is one of the last steps for the Foundation in becoming the funding arm of Pi Beta Phi. The Foundation has already accepted the existing endowments for scholarships and will soon receive the Emma Harper Turner Fund from the Fraternity.

The familiar format of the Friendship Fund will be continued by the Foundation. All prior gifts made to the Fund as well as future gifts will be included together in the cumulative giving levels that are reported annually in *The ARROW*.

The Friendship Fund, Pi Phi's annual solicitation of alumnae, was begun in 1980. In the ensuing years nearly \$1,000,000 has been raised for scholarships, fraternity service to clubs and chapters, leadership training for collegiate and alumnae officers, extension to new campuses and expansion of year-round scheduling at Arrowmont.

With the advantage of tax-exempt donations to the Foundation, the Fraternity and all members will benefit from the building of an endowment to

enhance all aspects of programming which qualify for Foundation funding.

The Foundation plans to increase alumnae awareness of the opportunities for supporting fraternity programs. The young women active in chapters are selected for their scholastic and leadership potential. Pi Beta Phi training in leadership skills, discussions of ethics and values and community service activities help them to fulfill their potential and are important to their success as the future leaders of our communities. Foundation funding of eligible programs through gifts to the Friendship Fund is essential.

Granting scholarship awards to actives and alumnae is something Pi Phi has in common with other Greek organizations. The Foundation's goal is to increase both the number and the dollar amounts of awards given annually. This year, the Foundation has awarded 40 undergraduate scholarships, increasing each award from \$500 to \$750. Five Alumnae Continuing Education Scholarships at \$1,000 each and four graduate fellowships at \$2,500 each were also awarded. Until the Foundation is able to increase endowment funds for scholarships, partial funding of these annual awards must be supported by the Friendship Fund.

Arrowmont School of Arts and Crafts will continue to receive support through the Friendship Fund. Arrowmont carries on the tradition of

Pi Beta Phi Settlement School begun in 1912 with a community outreach that provides art education programs in area schools and brings local children to the campus for classes.

As one of the top private schools of arts and crafts in the United States, Arrowmont annually enrolls nearly 2,000 students of varying levels of expertise from the U.S. and many foreign countries. In addition, Elderhostel classes are offered both spring and fall and a special Pi Phi Arts Weekend for members is held the first weekend of May each year.

The Foundation mission states we are "committed to fund programs which promote the intellectual, ethical and leadership development of members of Pi Beta Phi Fraternity and, through its philanthropic efforts, to benefit the larger society."

Scholarship awards and educational programs promote the intellectual development of members. Values and ethics are a part of all Fraternity programming. Biennial conventions and regional workshops provide collegiate and alumnae officers with leadership training applicable for success in any career or volunteer endeavor.

Your generous gift to the Friendship Fund will sustain Pi Beta Phi's efforts in all of these areas. Supporting the educational needs of Pi Phi women is a smart investment in the future.

**Pi Beta Phi Foundation Board of Trustees. Front: Ann Dudgeon Phyllis and Adrienne Hiscox Mitchell. Back: Mary Ann Behlen Hruska, Jo Ann Minor Roderick, Betty Blades Lofton, Carolyn Helman Lichtenberg.**



# Recognition and Memorial Gifts

This listing includes recognition and memorial gifts to the Pi Beta Phi Foundation from September 2, 1993 through April 4, 1994. Recognition and memorial gifts are listed in the Winter and Summer issues of *The ARROW*.

## In Recognition of:

**Barbara Bass Berry**, Oklahoma Alpha  
by Melissa Berry Simmons

**California Gamma Chapter**  
by Lora Rauch Hulsman

**Colorado Alpha Chapter**, in honor of  
Chapter Loyalty Day  
by Kay Knittle Brock

**Connecticut Alpha Chapter**  
by Anne Elizabeth Varrone

**Jane Brazelton Dudgeon**, Texas Zeta, in  
honor of her birthday  
by Ann Dudgeon Phy

**Gladys Osborne Hall**, Wisconsin  
Gamma, celebrating her membership as a  
Golden Arrow  
by Gladys Osborne Hall

**Ruth Williams Hansen**, D.C. Alpha  
by Sabra Hansen Qua

**Illinois Alpha Chapter**, in honor of  
Chapter Loyalty Day  
by Evelyn Peters Kyle

**Indiana Alpha Chapter**  
by Doris McClintick Wood

**Lori Michelle King**, Mississippi Beta  
by Suzanne Malone

**Marcie Townsend Lewis**, Arizona Beta  
by Ann Rector Lewis

**Mary Peckinpugh McCloskey**, Iowa  
Gamma, in celebration of her 85th birthday  
by Mary-Jane Riley Lacke  
Dorothy Sylvester Hine  
Berenice McCreight Emons  
Nancy Lacke Matis  
Katherine Hannay McLain

**New York Alpha Chapter**, in honor of  
Chapter Loyalty Day  
by Frances DeSimone Becque

**Ohio Alpha Chapter**  
by Stacia Taylor Roth

**Ann Dudgeon Phy**, Texas Alpha  
by Sandra Street Estess  
Richardson-Plano, Texas Alumnae Club

**Province Coordinators**  
by Patricia Friend Cooke

**Richmond, Virginia Alumnae Club**  
by Elizabeth Chambers George

**Nancy Carlock Rogers**, Texas Gamma  
by Sandra Street Estess

**Sally Saier Brinkema**, Florida Beta,  
recognizing her unselfishness and assistance  
while in school  
by Jim Tollerton

**Barbara Berry Sewell**, Oklahoma Alpha,  
recognizing her membership as a  
Golden Arrow  
by Elizabeth Mallory Wightman  
Julie Katherine Wightman  
Sally Sewell Wightman

**Elizabeth Snyder Smith**, California Beta,  
in celebration of her 98th birthday and in  
recognition of her 78th year as a Pi Phi  
by Larry and Nancy Fogle Pollard

**Texas Delta Chapter**, in honor of Chapter  
Loyalty Day  
by Carolyn Pavletich Lesh

**Lucinda Thorton Trabue**, Tennessee  
Beta, recognizing her retirement after  
10 years of service on Arrowmont Board of  
Governors  
by Ann Stuckey Owen

**Virginia Gamma Alumnae**  
by Marga Larson Bales

**West Virginia Gamma Chapter**  
by Roberta Boyd Bragan

**Salli Preston Whitaker**, Texas Eta  
by Gay Calloway Preston

**Elizabeth Erbe Wilcox**, daughter of Mary  
Close Erbe and Arrowmont student  
by Mary Close Erbe

**Catherine Witte**, Ohio Theta  
by Kathleen Anderson Witte

**Stephanie Leonard Witte**, Ohio Theta  
by Kathleen Anderson Witte

**Carrie M. Witte**, Ohio Theta  
by Kathleen Anderson Witte

## In Memory of:

**Marion Blackett**, Utah Alpha  
by Elizabeth Blackett Streeper  
Ann Blackett Harris

**Betty Blaul**, Kansas Alpha  
by Betty E. Cooper  
Nancy Carlock Rogers

**Joy Webster Bondurant**, Kansas Alpha  
by Jan Threlkeld Moore

**Christina Lynn Bonnell**, Texas Alpha  
by Ric Bonnell

**Deloise McFadden Bradley**, Alabama  
Beta  
by Susan King Jordan  
Claire Roberts Adams

**Spurgeon Britt**, husband of Barbara  
Ledbetter Britt  
by John and Alice Jones Meyers

**Ann Howard Brookshire**, Texas Beta  
by Kathy Gray Comer  
Paul, Elizabeth and Ann Dudgeon Phy  
Nancy Carlock Rogers  
Jane Porter Warmack

**Betty Hannum Orth Cant**, Wisconsin  
Alpha  
by Buffalo, New York Alumnae Club

**Elsie Stumberg Church**, Texas Beta  
by San Antonio, Texas Alumnae Club

**Anna Lundberg Cordes**, Kansas Beta  
by Wichita, Kansas Alumnae Club

**Jane Bronk Councilor**, Maryland Alpha  
by Washington, D.C. Alumnae Club

**Maralou Juday Crane**, Ohio Zeta  
by Roberta Boyd Bragan  
The Kevin G. Clifford family  
(Janice Kincaid Clifford)

Janet Goode Durham  
Marilyn Simpson Ford  
Virginia Bland Fry  
Karen Kincannon Glaser  
Jeanie Hester Hillis  
Anna Gerhart Kier  
Evelyn Peters Kyle  
Carolyn Pavletich Lesh  
Rae Ellen Wohlhueter Maier  
Annette Mitchell Mills  
Adrienne Hiscox Mitchell  
Sarah Ruth Mullis  
Mary Ann Fisher Olinger  
Barbara Sands Olsen  
Ann Dudgeon Phy  
Betsy Everett Rees  
Myra De Palma Reimer  
Nancy Carlock Rogers  
Sally Perry Schulenburg  
William and Nancy Arthur Smetts  
Ann Taylor Tommelein  
Jane Houchens Tuten  
John and Lucy Baker Warner

**Jane W. Crocket**, California Beta  
by Jo Ellen Coate Meier

**Ella Davenport**, mother of Elizabeth  
Davenport Garrels  
by Betty Blades Lofton

**Cecile Woodhouse DiPlacido**, North  
Carolina Beta  
by Margaret Strum Allesee  
Kathryn Keim Lorenz  
Margery Boos Murray  
Constance Fillmore Shenstone

**Sue Barnes Douglas**, Illinois Eta  
by Nicole Kristine Elston

**Virginia Lewis Ealy**, Ohio Beta  
by Jefferson County, Colorado Alumnae  
Club

**Mrs. Carl Enggas**, mother-in-law of  
Marion Enggas Creamer  
by Helen Woodsmall Kassebaum

**Shirley Johnson Faytinger**, Nebraska  
Beta  
by Marilyn Simpson Ford

**Mary L. Forney**, Virginia Alpha  
by Helen-Louise Duckett Waller

**Barbara Walker Goodman**, Washington  
Alpha  
by Jane Bony Heiserman

**Grayce Darling Grant**, Vermont Beta  
by Janis Mitchelhill Leas

**Alberta Grones**, mother of Hattielu  
Grones Lintner  
by Lois Keller Boss

**Eleanor Hougham Guerine**, Indiana  
Alpha  
by Oak Park-River Forest, Illinois Alumnae  
Club  
Ruth Miller Schwiager

**Richard W. Haines**, husband of Marybelle  
Kimmel Haines  
by Southern Illinois Alumnae Club

**Patricia Bauer Hansen**, South Dakota  
Alpha  
by Sheila Shannon Gaeckle

**Elsie Nuss Hayes**, Kansas Beta  
by Hutchinson, Kansas Alumnae Club  
**Joseph R. Holt**, husband of Betty Rowton  
Holt and father of Betsy Holt Schwartz  
by Evelyn Peters Kyle  
Aileen Aylsworth Welgan

**Mary Resener Hopkins**, Ohio Alpha  
by Southwest Florida Alumnae Club

**Margaret George Houston**, Colorado Alpha

by Janet Goode Durham  
Joan Scholes Hill  
Marilyn Simpson Ford  
Jefferson County, Colorado Alumnae Club

Adrienne Hiscox Mitchell  
Karen Brooks Turner

**Sarah Holmes Hunt**, Wyoming Alpha  
by Adrienne Hiscox Mitchell

**Mary Sherman Jessup**, Indiana Delta  
by Lynn Halik Massey

**Charlotte Keck Johnson**, Illinois Zeta  
by Alice Lovejoy Hine

**Julia Ferrell Johnson**, South Carolina Beta  
by Judith Willson Davies

**Elizabeth Wilson Jones**, California Delta  
by Mr. and Mrs. George Goodwin

Ada Ima Cameron  
Alice Serrahn  
Sylvia Serrahn  
1080 Chestnut Corporation

**John and Marion Enggas Kreamer**, Kansas Alpha

by Helen Woodsmall Kassebaum

**Nan Laroche Ladd**, Oregon Alpha  
by Bakersfield, California Alumnae Club  
Nancy Fogle Pollard

**Pauline Sill Lawrence**, Oklahoma Alpha  
by Mary Tack Carrere

**Gertrude Wollenberger Leetz**, Indiana Beta

by Jane Edwards McPherson

**Nellie Little**, Nevada Alpha  
by Grace Little

Josephine Little

**Sarah L. McCollum**, Texas Beta  
by Marianna Haberle White

**Glee McCrary McKay**, Texas Zeta  
by Ann Warmack Brookshire

**Thomas Meyersieck**, son of Mary Wiederholdt Meyersieck  
by San Mateo County, California Alumnae Club

**Sue Ellen Milner**, Mississippi Beta  
by Mississippi Beta Chapter  
Rich and Linda Marlin McDavitt

**Kathryn Montgomery**, mother of Lou Ann Montgomery Carter

by Beth van Maanen Beatty  
Frances DeSimone Becque  
Virginia Bland Fry  
Maurine Hager Jones  
Carolyn Pavletich Lesh  
Betty Blades Lofton  
Adrienne Hiscox Mitchell  
Ann Dudgeon Phy  
Jo Ann Minor Roderick  
Lucy Baker Warner  
Carol Inge Warren  
Marjorie Young Wittich

**Patricia Mills Moore**, Oklahoma Beta  
by Margaret Perkins Casey

Las Vegas, Nevada Alumnae Club

**Mary-Jane Cummings Morehouse**, Michigan Beta

by Margaret Strattan Bell  
Aline B. Emens  
Gloria Bliss Federer  
Nancee Moore Kinghorn  
Mr. and Mrs. J. Richard Marshall  
Joan Hueber McKee

**Peggy McLarry Neary**, Texas Beta  
by Dorothy Greig Schoeneck

**Christine Frances O'Reilly**, North Carolina Beta

by Dawn Taylor Biegelson

**Ora Clark Osborn**, Iowa Gamma  
by Elizabeth Clark Horne

**Ruth Elberfeld Overmyer**, Tennessee Alpha

by Alpha Book Club of Chattanooga, Tennessee Alumnae Club

Myldred Allen Hightower

**Nancy Dewaele Painter**, Illinois Zeta  
by Iowa City, Iowa Alumnae Club

Iowa Zeta Chapter

**Sarah Jones Phillips**, Kansas Alpha  
by Hutchinson, Kansas Alumnae Club

**Frances Phy**, mother-in-law of Ann Dudgeon Phy

by Ann Warmack Brookshire

**Florence Helmick Pinkerton**, Michigan Beta

by Honolulu, Hawaii Alumnae Club

**Gari Hathaway Piper**, Nebraska Beta  
by Debra Pilling Htcks

Dorothy Weaver Morgan Alumnae Club of Lincoln, Nebraska

**Vivienne Vent Price**, Illinois Eta

by Norman, Oklahoma Alumnae Club

**Elizabeth Reed**, Wisconsin Alpha

by Wisconsin Alpha Chapter

**Rosalynn Reichert Reinke**, Ohio Beta  
by Martha Bowman Ebeling

**Herbert Todd Rich**, husband of Genevieve Fawcett Rich

by Kansas City, Missouri/Shawnee Mission, Kansas Alumnae Club

**Ann Kennington Richardson**, Louisiana Alpha

by Kathryn Ann Richardson

**Jane Demaree Richardson**, Indiana Alpha

by Jane Betts

Alice Gill Goshorn

Peggy Toler Howe

Georgia Bullard Long

Jo Ann Watt Mock

Linda Suhre O'Connor

**Sally Bosman Schneider**, Indiana Gamma

by Muncie, Indiana Alumnae Club

**William Schoenbach**, husband of Jennetta Benepe Schoenbach

by Ventura County, California Alumnae Club

**Corrinne Hopkins Scoggin**, Louisiana Alpha

by Catherine Barkley Roth

**Jane Kresge Secord**, Wisconsin Alpha  
by Madison, Wisconsin Alumnae Club

**Irma Carlton Simmons**, Iowa Zeta  
by Carolyn Simmons Heller

**Clara Hall Sipherd**, Iowa Beta  
by Southwest Florida Alumnae Club

**Carla Rodehaver Stubbs**, Virginia Gamma

by Marcia Rodehaver Smith

**Katharine Kelley Sullivan**, Ohio Delta  
by Barbara Teall Hendricks

**Helen Wine Terrell**, Maryland Alpha  
by Dorothy B. Krug

**Nora Jean Terrien**, Vermont Beta  
by C.M. and Nora Terrien

**Frances Bielby Terrill**, Michigan Beta  
by Stephen and Patricia Root Bash  
Marcia Perry Nix

**Kathryn Kuper Tottenham**, Texas Alpha

by Carol Cullum Triesch

San Antonio, Texas Alumnae Club

**Laure Rodgers Toulon**, California Beta  
by Teresa Guilfoil Wagstaff

**Mary Grace Bice Utterback**, Indiana Epsilon

by Alton-Edwardsville, Illinois Alumnae Club

**Elizabeth Colgin Watson**, Texas Alpha  
by Merida Watson Blackwell

Ann Dudgeon Phy

**Richard E. Webster**, husband of Lucy MacLean Webster and father of Judith Webster McHenry

by Ventura County, California Alumnae Club

**Beatrice Burgan Wilde**, Indiana Gamma  
by La Canada Valley, California Alumnae Club

Ruth Touzalin Busch

**Alice Branch Wilkins**, Illinois Zeta

by Margaret Robinson Thompson

**Edward E. Willey, Jr.**, brother of Twyla Willey Gunter

by Richmond, Virginia Alumnae Club

**Janet Gray Willis**, Vermont Alpha

by Honolulu, Hawaii Alumnae Club

**Mary Jane Wilson**, Illinois Beta-Delta  
by Lisa Gamel Scott

**Jessie Stone Wohler**, mother of Martha Wohler Bickel

by St. Louis, Missouri Alumnae Club

**Helen Secor Woodruff**, Iowa Gamma

by Marvel Secor Benson

Cecelia Johnson Miller

Sally Perry Schulenburg

Adele Helmkampf Weicker

**William N. Woodruff**, husband of Gertrude Johannessen Woodruff

by Tom and Jan Threlkeld Moore

**Lucille Wight**, mother of Jane Wight

Scharlach and grandmother of Allison Scharlach

by Nancy Carlock Rogers

**Mahala Ann Young**, Texas Delta

by James, Ginger and Nancy Wood Fair  
Ann Warmack Brookshire



## Foundation Selects ACE Scholarship Recipients

The Pi Beta Phi Foundation and the Alumnae Committee for Continuing Education are pleased to announce that five alumnae have been awarded Alumnae Continuing Education Scholarships. Each of these winners is an active alumna member of Pi Beta Phi, has been out of school at least two years and is working to enhance her career qualifications through a particular course of study.

**Mary Estelle Dickey**, Tennessee Delta, Memphis Area Alumnae Club, has been on the Tennessee Delta Alumnae Advisory Committee for four years. She is currently employed as a second grade teacher and is going to school part-time to complete a master's of education in curriculum and instruction.

**Michelle Laub Griffin**, California Gamma, North Woodward, Michigan Alumnae Club, currently serves her club as president and has held other positions such as vice president for membership and programs. An active community volunteer, Michelle has participated in projects involving literacy and abused women and children. Michelle is attending Wayne State University full-time and anticipates receiving a bachelor of fine arts



**Mary Estelle Dickey**

degree with an emphasis in interior design and architecture in May 1995.

**Tamie Pachek Lancaster**, Montana Alpha, has returned to school to obtain a master's degree in teaching at Washington State University/Tri-Cities branch. Although there is not an alumnae club close by, Tamie participates by providing rush information on area collegians and looks forward to the day that she is near a club. She has been an energetic community volunteer participating in efforts to benefit children and her church.

**Karri Lynn Rensel**, Kentucky Alpha, Louisville, Kentucky Alumnae Club, is currently completing her master's degree in clinical psychology at Spalding University and is applying to doctorate programs. Her goal is to have a career as a psychologist. As an under-



**Michelle Laub Griffin**

graduate, Karri held various chapter offices including Chapter President and Vice President of Social Advancement.

**Martha Walton**, Arizona Alpha, Phoenix Alumnae Club, is a former member of the Tucson Alumnae Club where she was on the Arizona Alpha Alumnae Advisory Committee for two years. Martha is a candidate for a master's degree in psychology at Northern Arizona University. Martha has participated as a volunteer for her church, the March of Dimes, drug awareness and prevention programs, and programs to help the needy.



**Tamie Pachek Lancaster**



**Karri Lynn Rensel**



**Martha Walton**

# Foundation Scholarship Winners

## Harriet Rutherford Johnstone



**Debra Back**  
California Kappa  
University of California,  
San Diego



**Jamie Blackburn**  
Texas Gamma  
Texas Tech University



**Becky Boehman**  
Ohio Iota  
University of Dayton



**Liv Boughn**  
California Gamma  
University of Southern  
California



**Christin Brown**  
California Theta  
University of California,  
Davis



**Tara Budde**  
Illinois Alpha  
Monmouth College



**Melissa Davis**  
Kansas Beta  
Kansas State University



**Mary Filipiak**  
Ohio Epsilon  
University of Toledo



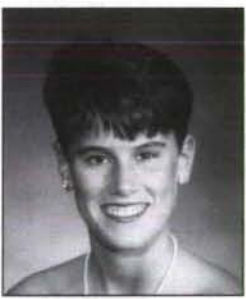
**Angela Gilliland**  
Indiana Gamma  
Butler University



**Heather Grim**  
Iowa Zeta  
University of Iowa



**Susan Hardin**  
Kentucky Beta  
University of Kentucky



**Molly Horman**  
Ohio Epsilon  
University of Toledo



**Tara James**  
Virginia Eta  
University of  
Richmond



**Paula Jernigan**  
Virginia Delta  
Old Dominion  
University



**Shannon Johnson**  
Wyoming Alpha  
University of Wyoming



**Tracy Legel**  
Ohio Iota  
University of Dayton



**Misty Livengood**  
Indiana Alpha  
Franklin College



**Elizabeth Lynch**  
Arizona Alpha  
University of Arizona



**Monique Means**  
Ohio Alpha  
Ohio University



**Carrie Melmed**  
California Zeta  
University of California,  
Santa Barbara



**Sara Moore**  
Ohio Iota  
University of Dayton



**Elisabeth Patterson**  
California Eta  
University of California,  
Irvine



**Marni Raitt**  
Michigan Beta  
University of Michigan



**Kara Riemenschneider**  
Ohio Eta  
Denison University



**Talitha Sims**  
Indiana Beta  
Indiana University



**Emily Sinclair**  
Oklahoma Beta  
Oklahoma State  
University



**Ashley Singer**  
Florida Delta  
University of Florida



**Tiffany Smith**  
Florida Alpha  
Stetson University



**Janice Steele**  
Florida Delta  
University of Florida



**Tisha Strand**  
Nebraska Beta  
University of Nebraska

**Frances Hall  
Comly**

**Louisiana  
Triple M**

**New York  
Zeta**

**Junior Alumnae  
Group**

NOT PICTURED:

**Tina Marks**  
Ohio Epsilon  
University of Toledo



**Jennifer Scott**  
Michigan Beta  
University of Michigan



**Amy Garrison**  
Texas Zeta  
Baylor University



**Brenda Bain**  
Pennsylvania Zeta  
Washington and  
Jefferson College



**Amy Jussila**  
Wyoming Alpha  
University of Wyoming

**Ruth Barrett Smith**

**Friendship Fund**



**Elizabeth Melton**  
Tennessee Delta  
Memphis State  
University



**Gabrielle Valdez**  
Oregon Alpha  
University of Oregon



**Gail Gleckler**  
Ohio Epsilon  
University of Toledo



**Andrea Griscti**  
Pennsylvania Theta  
Villanova University



**Roz Saidali**  
Washington Alpha  
University of Washington

## Graduate Fellowships Announced

**F**our Pi Phis will receive graduate fellowships awarded by the Pi Beta Phi Foundation for the 1994-95 academic year.

**Tracy Lynne Cane**, New York Gamma, graduated from St. Lawrence University in 1990 with a bachelor of science in biology. She is currently enrolled at Rensselaer Polytechnic Institute as a candidate for a master's of science degree in biology. Tracy plans to become a secondary education teacher of biology.

During her college career, Tracy participated in chapter activities in a variety of positions including Assistant Vice President of Mental Advancement, Historian and ARROW Correspondent. Since graduation, Tracy has served Pi Phi as a member of New York Epsilon's Alumnae Advisory Committee and was most recently employed as the chapter's House Director. She has been working as a biology teaching assistant for the past five years and her studies currently focus on microbial ecology.

**Wendy Ruth Gottlieb**, Connecticut Beta, is a 1992 cum laude graduate of Yale University with a bachelor's of art degree in philosophy and is currently in her second year of school at the University of Virginia School of Medicine. She anticipates receiving her M.D. in May 1996.

As an undergraduate, Wendy participated in service projects through her chapter as well as independently. She helped to build houses through Habitat for Humanity, participated in events to upgrade and promote the local community center, was a tutor at an inner-city high school and assisted in the administration of science programs and science clubs at various local elementary schools.

Today Wendy is an active community volunteer participating in projects involving a high school, a clinic and a nursing home. She also counsels Connecticut Beta collegians who are applying to medical school programs.

**Carolyn L. Whitford**, Nevada Alpha, received her bachelor's of arts degree in journalism with high distinction from the University of Nevada, Reno in 1990, and is currently in her



**Tracy Lynne Cane**



**Carolyn L. Whitford**

second year of school at the University of Nebraska College of Law. She was in the top 20% of her class at the end of her first year of law school and anticipates receiving her degree in May 1995.

Carolyn served her chapter in a variety of ways as an undergraduate including holding the position of Vice President of Mental Advancement. Upon graduation she was involved with the Las Vegas Alumnae Club as the fund-raising coordinator and plans to participate in the Lincoln, Nebraska Alumnae Club.

**Jennifer Lee Wright**, North Dakota Alpha, graduated this year with a bachelor of fine arts degree in ceramics from the University of North Dakota as well as with an art history minor and a secondary education degree. She is pursuing her fine arts interest through a master's in visual arts



**Wendy Ruth Gottlieb**



**Jennifer Lee Wright**

with an emphasis in ceramics at Syracuse University.

Jennifer's involvement in her chapter included being Chapter President, Panhellenic Delegate and House Manager. She has attended Arrowmont three different times and is a past recipient of a Foundation Arrowmont scholarship. She looks forward to becoming involved in the Syracuse, New York Alumnae Club.

# DIRECTIONS

## PI BETA PHI'S NETWORKING & MENTORING PROGRAM

Name: \_\_\_\_\_ Maiden Name: \_\_\_\_\_

Home Address: \_\_\_\_\_

City/State/Zip: \_\_\_\_\_

Home Phone: \_\_\_\_\_

Chapter: \_\_\_\_\_ Year of Initiation: \_\_\_\_\_

### Check One:

\_\_\_\_\_ I would like to help other Pi Phis. Please add my name and mentoring information to the program. I understand that this information may be released to any Pi Phi who requests the information.

#### Circle Appropriate Categories:

- |                                      |  |
|--------------------------------------|--|
| 1) Career search and contacts        | 5) Residential                           |
| 2) Career consultations/information  | 6) Social and personal needs             |
| 3) Career search training and skills | 7) Clubs and organizations               |
| 4) City and community information    | 8) Family and home interaction/referrals |

City of specialization: \_\_\_\_\_

Closest metropolitan area: \_\_\_\_\_

*Career Information:*

Occupation Cluster(s): \_\_\_\_\_ (See listing on back)

Occupation Title/Description: \_\_\_\_\_

\_\_\_\_\_ Help! I am entering or re-entering the job market, moving and/or would like some mentoring information from Pi Phi alumnae. Enclosed is my \$3.00 check payable to Pi Beta Phi.

#### Circle Appropriate Categories:

- |                                      |  |
|--------------------------------------|--|
| 1) Career search and contacts        | 5) Residential                           |
| 2) Career consultations/information  | 6) Social and personal needs             |
| 3) Career search training and skills | 7) Clubs and organizations               |
| 4) City and community information    | 8) Family and home interaction/referrals |

City of interest: \_\_\_\_\_

Closest metropolitan area: \_\_\_\_\_

*Career Information:*

Occupation Cluster (designated by letter) and/or specific career: \_\_\_\_\_

\_\_\_\_\_ (See listing on back)

Return to: DIRECTIONS Program  
Pi Beta Phi Central Office, 7730 Carondelet, Suite 333, St. Louis, MO 63105

# DIRECTIONS

## OCCUPATION CLUSTERS

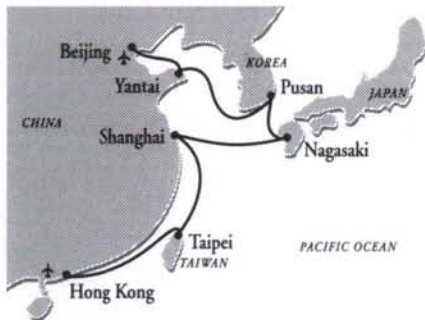
- A) **Agriculture & Environment**  
Conservation, Forestry, Horticulture, Landscaping, Recycling, Wildlife
- B) **Architecture, Engineering & Design**  
Drafting, Graphic and Interior Design, Surveyor, All Engineers, Architect
- C) **Communications**  
Advertising, Broadcasting, Journalism, Media, Publishing, Reporting, Writing
- D) **Computer & Science**  
All Computer/Technical Support, Data Processing, All Scientists
- E) **Construction & Trades**  
Automotive, Electrical, Mechanical, Painting, Plumbing, Textile
- F) **Cultural & Arts**  
Crafts, Entertainment, Film, Museums, Music, Performing, Photography, Theater, Actress
- G) **Education & Counseling**  
All Levels of Education, Employment Services, Librarian, Social Work, Administration, Counselor
- H) **Finance**  
Accounting, Banking, Consulting, Economist, Investments, Math, Statistics, Auditor
- I) **Government, Non-profit & Religion**  
Military, Ministry, Public & Social Services, Volunteer, FBI, Legislative Aide, Fund-Raising, Translator
- J) **Health & Medicine**  
Dentistry, Nursing, Pharmacy, Physician, Psychology, Therapists, Veterinary, Dietitian, Optometry, Pathology, Dermatology, Sales, Consultant
- K) **Home Economics**  
Homemaker, Childrearing, Family Planning
- L) **Hospitality**  
Catering, Chef, Convention, Food Services, Hotel, Restaurant
- M) **Legal & Law Enforcement**  
Attorney, Court Reporting, Judicial, Paralegal, Police
- N) **Management & Administration**  
Administrative Support, Clerical, Human Resources, Personnel, Public Relations, Company President
- O) **Manufacturing**  
Equipment Maintenance, Factory Operation, Plant Management
- P) **Recreation, Leisure & Travel**  
Airlines, Fitness Sports, Tourism, Public Relations
- Q) **Retail**  
Consumer, Design, Fashion, Merchandising, Manager
- R) **Sales & Marketing**  
Buyer, Import/Export, Insurance, Real Estate, Representative, Research, Wholesale, Telemarketing, Marketing, Manager, Sales
- S) **Transportation & Moving**  
Shipping & Freight, Trucking

*Pi Beta Phi Presents*

## THE BEST OF CHINA, JAPAN & THE ORIENT

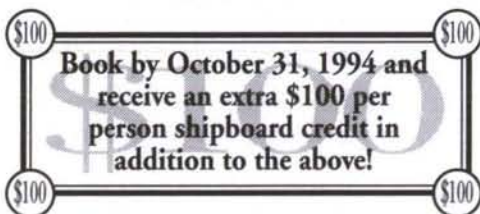
*12-day cruise departing March 27, 1995*

Royal Cruise Line invites you to cruise with Pi Beta Phi members aboard the classic, single-seating *Royal Odyssey* to the oldest, most extraordinary civilization on earth. From Hong Kong to Beijing, you'll discover the mystery of China and beauty of the Orient plus experience all the magical destinations few travelers ever have the opportunity to see.



### Special Bonus Amenities and Discount Fares

- Book now and **SAVE 30%** off cruise-only fares
- Discounted cruise-only fares from just \$3597 per person
- FREE AIR from West Coast
- Special Pi Phi reception on board
- \$50 per person shipboard credit
- \$50 additional per person shipboard credit available for Odyssey Club members



### Your Ports of Call:

**HONG KONG** Vibrant Hong Kong is the most dynamic city in the Orient. From the harbor teeming with junks, sampans and ultra-modern hovercraft, to the heights of Victoria Peak – it's a bargain hunters paradise.

**TAIPEI, TAIWAN** Formerly called Formosa, Taiwan has blossomed into an international force in the world of finance, commerce and industry. One of Taipei's many attractions is the National Palace Museum, which houses over 250,000 Chinese treasures.

**SHANGHAI, CHINA** Sprawling Shanghai shows the treasures of Chinese Art at the Shanghai Museum. A second day is spent touring the charming rural towns of Wuxi and Suzhou where Ming emperors spent their summers.

**NAGASAKI, JAPAN** Japan's welcoming "window" to the world has thrived since its devastation in World War II. Here you'll see Glover House, the site for "Madame Butterfly" and the inspiring Statue of Peace.

**PUSAN, KOREA** Known for its gorgeous temples, you may see one of the most ornate – the fabled Pomosa. This exotic town is also a good place to shop for bargains especially distinctive Korean crafts.

**YANTAI, CHINA** This delightful Shandong Peninsula town, a famous port of the opium wars, is renowned for its lovely beaches and for its delicate rose-petal wine, a popular export.

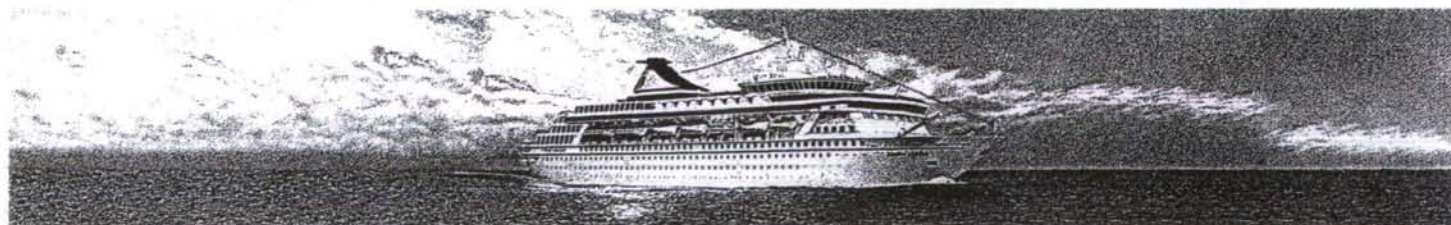
**BEIJING, CHINA** Your 3-night stay in one of China's finest hotels allows you to truly explore the wealth of wonders in this mighty city. A full-day trip will carry you to the Great Wall and the ming tombs with their avenue of huge statues. The 9000-room Imperial Palace is the former Forbidden City, containing the Dragon Throne and other priceless treasures. There's also the zoo with its endearing pandas and the lovely Summer Palace.

# Royal Cruise Line

A WORLD EXPERIENCE

FOR INFORMATION AND RESERVATIONS, PLEASE CALL CLAIRE ADAMS AT  
**WINDJAMMER TRAVEL, INC. (800) 633-1545**

\*Pi Beta Phi is not responsible for any claims or damages in conjunction with the above cruise. Also, the cost of the cruise is not deductible as a charitable contribution for Federal income tax purposes.



## How Alumnae Can Help

1. Fill out a Rush Information Form (RIF) on any prospective rushee you wish to sponsor for membership in Pi Beta Phi. See form on page 33 in this magazine. The form may be copied or additional forms are available from Central Office, 7730 Carondelet, Suite 333, St. Louis, MO 63105.
  - a. Do not call the family or the young woman (rushee) for information.
  - b. Do use the information gathered by the alumnae panhellenic group in your city. If the rushee has not filled out a panhellenic information form, please encourage her to do so.
2. Return the completed form directly to the Chapter Membership Chairman of the appropriate chapter. All Chapter Membership Chairmen are listed in this issue of The ARROW beginning on page 34.
3. Please send the RIF early. Be sure it is completed. Send a picture of rushee, if possible.
4. Although only one RIF is needed for each rushee, letters are welcome from all alumnae who may wish to write.
5. If you know of a legacy going through rush, please fill out a Legacy Introduction Form found on the bottom of this page. The Legacy Introduction Form **DOES NOT** take the place of a RIF.

---

## Legacy Introduction Form

---

*This form is provided as a convenience for Pi Phi alumnae to introduce legacies to collegiate chapters. Please complete the following to ensure that the chapter is aware of your legacy. Return this form to the appropriate Chapter Membership Chairman listed in this issue of The ARROW. Please remember this introduction does not take the place of a Rush Information Form.*

Date: \_\_\_\_\_

To: \_\_\_\_\_

Chapter

College or University

This is to inform you that my:     granddaughter             daughter             sister

Name: \_\_\_\_\_

From: \_\_\_\_\_

City

State

Will be/is a student on your campus as a:     Freshman             Sophomore             Junior             Senior

Her school address (if known) will be/is: \_\_\_\_\_

Signed: \_\_\_\_\_

Name (First, Maiden, Last)

Year & Chapter of Initiation



# Rush Information Form (RIF)

(To be used by alumnae members only)

Name of Rushee \_\_\_\_\_ Attending \_\_\_\_\_ College \_\_\_\_\_

Home Address \_\_\_\_\_  
Street City State Zip

Year in College:  Freshman  Sophomore  Junior  Senior

If transfer student: College attended \_\_\_\_\_ College GPA \_\_\_\_\_

High School attended \_\_\_\_\_  
Name City State Zip

Class Size \_\_\_\_\_ Rank \_\_\_\_\_ GPA \_\_\_\_\_ SAT/ACT (if known) \_\_\_\_\_

Parent or Guardian \_\_\_\_\_

Pi Beta Phi Relatives \_\_\_\_\_  
(sister, mother, grandmother)

Other Greek Affiliated Relatives \_\_\_\_\_

Please check ONE of the following:

Wish to highly recommend  Wish to recommend

Please check ONE of the following:

Known personally by an alumna (if so, how long?) \_\_\_\_\_

Only factual information included. Source of information \_\_\_\_\_

Other \_\_\_\_\_

Signed \_\_\_\_\_  
Individual Pi Beta Phi Alumna

Address \_\_\_\_\_  
Street City State Zip

Telephone \_\_\_\_\_ Date \_\_\_\_\_  
Area Code Number

LIST SCHOOL AND COMMUNITY ACTIVITIES AND HONORS: (Attach another sheet if needed.)  
Comment on special interests, talents, leadership qualities, personality.

# Chapter Membership Chairmen

## For 1994-95 Rushing Season

<i>Chapter &amp; School</i>	<i>Name of Chapter Membership Chairman</i>	<i>School Address of Chapter Mem. Chrm.</i>	<i>Summer Address of Chapter Mem. Chrm.</i>	<i>Dates of Major Rush</i>
Alabama Alpha Birmingham-Southern College	<b>Adrienne N. Simon</b>	<b>ALABAMA</b> PO Box A-59 BSC 900 Arkadelphia Road Birmingham, AL 35254	BSU Box 921 Birmingham, AL 35254	September 1-3
Alabama Beta University of Alabama	<b>Allison M. Neely</b>	PO Box BP Tuscaloosa, AL 35486	PO Box BP Tuscaloosa, AL 35486	August 18-21
Alabama Gamma Auburn University	<b>Nicole R. Dedrick</b>	Dorm J- Boyd Hall Auburn, AL 36830-5835	Apartment 27 542 W Magnolia Ave. Auburn, AL 36830	September 11-17
Arizona Alpha University of Arizona	<b>Leigh S. Ellis</b>	<b>ARIZONA</b> 1035 N Mountain Ave. Tucson, AZ 85719	5115 Bayonne Circle Irvine, CA 92714	August 16-24
Arizona Beta Arizona State University	<b>Courtney L. Culwell</b>	340 E University #177 Tempe, AZ 85281	25351 Cadillac Drive Laguna Hills, CA 92653	August 25- September 1
Arizona Gamma Northern Arizona University	<b>Cynthia L. Colligan</b>	PO Box 23590 Flagstaff, AZ 86002	4621 Caravelle Drive Anchorage, AK 99502	August 24-28
Arkansas Alpha University of Arkansas	<b>Megan K. Loveless</b>	<b>ARKANSAS</b> 502 W Maple Fayetteville, AR 72701	6 Holly Springs Court Little Rock, AR 72212	August 22-27
Arkansas Beta University of Arkansas at Little Rock	<b>Kristen Leigh Cunningham</b>	3117 S Taylor Little Rock, AR 72204	7623 Henderson Road Little Rock, AR 72210	September 8-11
California Alpha Stanford University	<b>Erin Cutler</b>	<b>CALIFORNIA</b> PO Box 4342 Stanford, CA 94309	329 Tumble Creek Lane Fallbrook, CA 92028	April 10, 1995
California Beta University of California (Berkeley)	<b>Lindsey Smith</b>	2325 Piedmont Avenue Berkeley, CA 94704	3131 Lama Avenue Long Beach, CA 90808	August 10
California Gamma University of Southern California	<b>Gina Lauren Calabria</b>	667 W 28th Street Los Angeles, CA 90007	15200 Lily Bay Court Lake Oswego, OR 97034-3769	September 7-10
California Delta University of California (Los Angeles)	<b>Lori Jadon</b>	700 Hilgard Avenue Los Angeles, CA 90024	558 Midvale Avenue, #6 Los Angeles, CA 90024	September 25-30
California Epsilon San Diego State University	<b>Bonnie Burkhalter</b>	5080 College Place San Diego, CA 92115	5080 College Place San Diego, CA 92115	September 9-13
California Zeta University of California (Santa Barbara)	<b>Mary Martin</b>	763 Camino Pescadero Goleta, CA 93117	22491 Ferdinand Drive Salinas, CA 93908	Sept. 26- Oct. 1

<i>Chapter &amp; School</i>	<i>Name of Chapter Membership Chairman</i>	<i>School Address of Chapter Mem. Chrm.</i>	<i>Summer Address of Chapter Mem. Chrm.</i>	<i>Dates of Major Rush</i>
California Eta University of California (Irvine)	<b>Rachel Kathleen McCarthy</b>	1012 Arroyo Irvine, CA 92715	55 Exeter Irvine, CA 92715-2656	September 21-26
California Theta University of California (Davis)	<b>Becky Stubblefield</b>	445 Russell Blvd. Davis, CA 95616	1587 Drake Drive Davis, CA 95616	September 17-22
California Iota California State University, Chico	<b>Kelly McIlwaine</b>	413 W 4th Street Chico, CA 95928	745 W 3rd Street Chico, CA 95928	September 1-4
California Kappa University of California (San Diego)	<b>Eva Jabber</b>	4936 Dorena Court San Diego, CA 92122	2872 Manning Ave Los Angeles, CA 90064-4349	Sept. 29- Oct. 2
California Lambda University of California (Riverside)	<b>Jeannine Susanne Chipkar</b>	3429 Canyon Crest Dr. #1-D Riverside, CA 92507	3429 Canyon Crest Dr. #1-D Riverside, CA 92507	September 18-23
Colorado Alpha University of Colorado	<b>Carlie A. Odau</b>	<b>COLORADO</b> 890 11th Street Boulder, CO 80302	2009 Linden Lake Road Fort Collins, CO 80524	March 8
Colorado Gamma Colorado State University	<b>Susan L. Sackerson</b>	625 W Lake Street Fort Collins, CO 80521	5865 W Quarles Drive Littleton, CO 80123	August 18-23
Colorado Delta Colorado School of Mines	<b>Christie J. Briscoe</b>	910 13th Street Golden, CO 80401	910 13th Street Golden, CO 80401	August 21-26
Connecticut Alpha University of Connecticut	<b>Diane T. Nanos</b>	<b>CONNECTICUT</b> 11 Gilbert Road Storrs, CT 06268-9007	198 Boston Turnpike Coventry, CT 06238	September 12-17
Connecticut Beta Yale University	<b>Mieke Jacobs</b>	Box 2319 Yale Station New Haven, CT 06520	Box 204294 Yale Station New Haven, CT 06510	January 1995
Florida Alpha Stetson University	<b>Margaret Simons McDow</b>	<b>FLORIDA</b> Box 8237 Stetson University DeLand, FL 32720	738 Myrtle Drive Rock Hill, SC 29730-3631	January 7-13, 1995
Florida Beta Florida State University	<b>Amy Michelle Middleton</b>	519 W Jefferson Street Tallahassee, FL 32301	1705 W Call St., #307A Tallahassee, FL 32304	August 22-28
Florida Delta University of Florida	<b>Karen Hovis</b>	37 W Fraternity Row Gainesville, FL 32603	9020 N Arcadia Way Citrus Springs, FL 34434	August 14-21
Florida Epsilon University of Central Florida	<b>Shelley Lynn Durant</b>	4304 Greek Park Drive Orlando, FL 32816	4304 Greek Park Drive Orlando, FL 32816	August 14-20
Georgia Alpha University of Georgia	<b>Mary Chrystine Kingrea</b>	<b>GEORGIA</b> 886 S Milledge Avenue Athens, GA 30605	1000 Edgewater Drive Atlanta, GA 30328	September 3-12
Idaho Alpha University of Idaho	<b>Margaret M. Donaldson</b>	<b>IDAHO</b> PO Box 3028 Moscow, ID 83843	5035 W Canyon Creek Road Idaho Falls, ID 83402	August 19-23

<i>Chapter &amp; School</i>	<i>Name of Chapter Membership Chairman</i>	<i>School Address of Chapter Mem. Chrm.</i>	<i>Summer Address of Chapter Mem. Chrm.</i>	<i>Dates of Major Rush</i>
Illinois Alpha Monmouth College	<b>Amy L. Bradshaw</b>	<b>ILLINOIS</b> Monmouth College Box 918 Monmouth, IL 61462	RR 1, Box 15 Plymouth, IL 62367	August 30-September 3
Illinois Beta-Delta Knox College	<b>Shilpa Bhalerao</b>	Knox College Box 1637 Galesburg, IL 61401	50 Hackberry Circle Galesburg, IL 61401	January 12-17, 1995
Illinois Epsilon Northwestern University	<b>Robin L. Wise</b>	636 Emerson Street Evanston, IL 60201	4260 Lindenwood Lane Northbrook, IL 60062	January 4-11, 1995
Illinois Zeta University of Illinois	<b>Laura Gerleman</b>	1005 S Wright Street Champaign, IL 61820	1730 Marcee Lane Northbrook, IL 60062	August 20-31
Illinois Eta Millikin University	<b>Misty Love Lynch</b>	235 N Fairview Decatur, IL 62522	RR 2, Box 13 Paris, IL 61944	August 23-28
Illinois Theta Bradley University	<b>Jennifer Melton</b>	1004 N Institute Place Peoria, IL 61606	3047 37th Avenue Rock Island, IL 61201	August 21-27
Illinois Iota Illinois State University	<b>Sally A. Briney</b>	709 W College Ave. Normal, IL 61761	1442 Groton Lane Wheaton, IL 60187-7748	September 9-19
Indiana Alpha Franklin College	<b>Bridget Ann Bascom</b>	<b>INDIANA</b> Franklin College Elsy Hall Franklin, IN 46131	5091 SR 48 Lawrenceburg, IN 47025	August 29-September 3
Indiana Beta Indiana University	<b>Kristen Spandau</b>	928 E Third Street Bloomington, IN 47401	5335 Fall Creek Road Indianapolis, IN 46220	Oct. 28-30, Nov. 19-20, January 5-7, 1995
Indiana Gamma Butler University	<b>Karen Diane Burkhart</b>	831 W Hampton Drive Indianapolis, IN 46208	3126 E Base Road Greensburg, IN 47240	January 10-14, 1995
Indiana Delta Purdue University	<b>Kari Howell</b>	1012 State Street West Lafayette, IN 47906	540 Ho-Hum Court Greenwood, IN 46142	January 6-7, 1995
Indiana Epsilon DePauw University	<b>Amy Elizabeth Tubergen</b>	303 S Locust Street Greencastle, IN 46135	8902 Bergeson Drive Indianapolis, IN 46278	Sept. 29-Oct. 2
Indiana Zeta Ball State University	<b>Carin Wolfsmith</b>	Rogers Hall, Suite 316 Muncie, IN 47306	3007 Carmel Drive Flossmoor, IL 60422-2262	September 9-19
Indiana Eta IN-Purdue University at Ft. Wayne	<b>Jeanie Eich</b>	2101 Coliseum Blvd. Ft. Wayne, IN 46805	4232 Arch Lane Woodburn, IN 46797	September 11-25
Iowa Alpha Iowa Wesleyan University	<b>Michele Lee Ann Long</b>	<b>IOWA</b> S.T. Hall Box 41 605 N Broadway Mt. Pleasant, IA 52641	10260 E 1000th Street Macomb, IL 61455-9483	September 18-21
Iowa Beta Simpson College	<b>Anne D. Hartman</b>	406 N Buxton Indianola, IA 50125	701 No. C Box 3191 Indianola, IA 50125	August 29-September 1
Iowa Gamma Iowa State University	<b>Denise LeAnn Handorf</b>	208 Ash Avenue Ames, IA 50014	3340 130th Street Gladbrook, IA 50635	August 15-21
Iowa Zeta University of Iowa	<b>Barrett Newell</b>	815 E Washington Iowa City, IA 52240	1100 23rd Avenue Coralville, IA 52241	August 15-21
Iowa Eta Drake University	<b>Rebecca S. Hunt</b>	1219 34th Street Des Moines, IA 50311	915 S Webster Ave Omro, WI 54963-1643	September 3-11

<i>Chapter &amp; School</i>	<i>Name of Chapter Membership Chairman</i>	<i>School Address of Chapter Mem. Chrm.</i>	<i>Summer Address of Chapter Mem. Chrm.</i>	<i>Dates of Major Rush</i>
Kansas Alpha University of Kansas	<b>Loralee E. Bruse</b>	<b>KANSAS</b> 1612 W 15th Street Lawrence, KS 66044	1612 W 15th Street Lawrence, KS 66044	August 13-18
Kansas Beta Kansas State University	<b>Michelle Landrum</b>	1819 Todd Road Manhattan, KS 66502	Apartment A 2401 Woodway Drive Manhattan, KS 66502	August 10-15
Kentucky Alpha University of Louisville	<b>Sarah Miller</b>	<b>KENTUCKY</b> 2030 Confederate Place Louisville, KY 40208	5127 Quail Court #7 Louisville, KY 40213	August 15-19
Kentucky Beta University of Kentucky	<b>Ashli Smith</b>	409 Columbia Avenue Lexington, KY 40508	605 Country Club Ashland, KY 41101-2145	August 13-19
Kentucky Gamma Eastern Kentucky University	<b>Jennifer Marlyn Louise DeSpain</b>	Telford Box 309 EKU Richmond, KY 40475	9325 Campbellsville Road Buffalo, KY 42716	August 16-21
Louisiana Alpha Tulane University - Newcomb College	<b>Monica Leigh Riordan</b>	<b>LOUISIANA</b> 7014 Zimple Street New Orleans, LA 70118	32107 Hamilton Ct #204 Solon, OH 44139	January 14-22, 1995
Louisiana Beta Louisiana State University	<b>Karen Melissa Frazier</b>	PO Box 25110 Baton Rouge, LA 70894	PO Box 25110 Baton Rouge, LA 70894	August 21-28
Maine Alpha University of Maine	<b>Leah McBreairty</b>	<b>MAINE</b> 107 College Avenue Orono, ME 04473	PO Box 535 Hampden, ME 04444	September 12-16
Michigan Alpha Hillsdale College	<b>Jennifer Lynn Channell</b>	<b>MICHIGAN</b> 304 Hillsdale Street Hillsdale, MI 49242	17 Briarcliff Place Grosse Pointe Shores, MI 48236	January 14-17, 1995
Michigan Beta University of Michigan	<b>Leah Fredman</b>	836 Tappan Street Ann Arbor, MI 48104	7720 Country Club Court Clayton, MO 63105	Sept. 18- Oct. 1
Michigan Gamma Michigan State University	<b>Kerry A. McCarthy</b>	343 N Harrison Road East Lansing, MI 48823	145 Collingwood #31 East Lansing, MI 45803	September 10-25
Minnesota Alpha University of Minnesota	<b>Mara Michelle Levey</b>	<b>MINNESOTA</b> 1109 5th Street SE Minneapolis, MN 55414	2515 E 7th Street Duluth, MN 55812	Sept. 22- Oct. 9
Mississippi Alpha University of Southern Mississippi	<b>Laura Evelyn Godwin</b>	<b>MISSISSIPPI</b> Southern Station Box 8376 Hattiesburg, MS 39406	Southern Station Box 6245 Hattiesburg, MS 39406	August 13-18
Mississippi Beta University of Mississippi	<b>Jill Marie Brissenden</b>	PO Box 8347 University, MS 38677	PO Box 3425 University, MS 38677	August 14-20
Missouri Alpha University of Missouri	<b>Jennifer Marie Copenhaver</b>	<b>MISSOURI</b> 511 E Rollins Columbia, MO 65201	4954 Lindell Blvd. St. Louis, MO 63108	August 17-23
Missouri Beta Washington University	<b>Anne Kemerer</b>	Box #1182 Wash. Univ. St. Louis, MO 63130	27 Timbergreen Circle Denton, TX 76205	January 14-23, 1995
Missouri Gamma Drury College	<b>Tammy Smith</b>	900 N Benton Springfield, MO 65802	2036 Holly Court Springfield, MO 65804	August 27-29

<i>Chapter &amp; School</i>	<i>Name of Chapter Membership Chairman</i>	<i>School Address of Chapter Mem. Chrm.</i>	<i>Summer Address of Chapter Mem. Chrm.</i>	<i>Dates of Major Rush</i>
Montana Alpha Montana State University	<b>Marcie Ann Bough</b>	<b>MONTANA</b> 1304 S 5th Bozeman, MT 59715	3009 Langohr Street Bozeman, MT 59715	August 28- September 1
Nebraska Beta University of Nebraska	<b>Angelica C. Podraza</b>	<b>NEBRASKA</b> 426 N 16th Lincoln, NE 68508	2011 Skyhawk Avenue Papillion, NE 68133	August 14-18
Nebraska Gamma Creighton University	<b>Andrea Milligan</b>	Pi Beta Phi 2500 California Place Creighton University Omaha, NE 68178	1407 W 13 Street South Newton, IA 50208	January 11-16, 1995
Nevada Alpha University of Nevada	<b>Allison J. Maupin</b>	<b>NEVADA</b> 869 N Sierra Street Reno, NV 89503	7283 Blue Falls Circle Reno, NV 89511	August 25-29
New Jersey Alpha Princeton University	<b>Lucinda Mary C. Brown</b>	<b>NEW JERSEY</b> 20 Nassau St., Suite 408 Princeton, NJ 08540	1003 Pine Lane Lafayette, CA 94549	November 6-11
New Mexico Alpha University of New Mexico	<b>Melissa R. Williams</b>	<b>NEW MEXICO</b> 1701 Mesa Vista NE Albuquerque, NM 87106	4612 Jamaica Drive NE Albuquerque, NM 87111	August 14-18
New Mexico Beta New Mexico State University	<b>Claire Michelle Selleck</b>	301 Greek Complex Las Cruces, NM 88003	833 Los Lovatos Santa Fe, NM 87501-1230	September 7-12
New York Alpha Syracuse University	<b>Sarah Hagelin</b>	<b>NEW YORK</b> 210 Walnut Place Syracuse, NY 13210	6914 Shalimar Way Fayetteville, NY 13066	January 1995
New York Delta Cornell University	<b>Andrea Beukenkamp</b>	330 Triphammer Road Ithaca, NY 14850	1322 East State Street Ithaca, NY 14850-6206	January 15-21, 1995
New York Epsilon Rensselaer Polytechnic Institute	<b>Meg Kate Scott</b>	1985 15th Street Troy, NY 12180	25 Old Marlboro Turnpike Newburgh, NY 12550	September 1994
North Carolina Alpha University of North Carolina	<b>Megan Amanda Williams</b>	<b>NORTH CAROLINA</b> 109 Hillsborough Street Chapel Hill, NC 27514	2615 Stuart Drive Durham, NC 27707	August 24-31
North Carolina Beta Duke University	<b>Sarah W. Pickens</b>	Box 99315 Durham, NC 27708	Box 97056 Durham, NC 27708	January 6-16, 1995
North Carolina Gamma Wake Forest University	<b>Amelia Bowen Fettig</b>	PO Box 9806 Winston-Salem, NC 27109	1502 Hawthorne Road Fort Wayne, IN 46802	January 1995
North Dakota Alpha University of North Dakota	<b>Jennifer J. Buresh</b>	<b>NORTH DAKOTA</b> 409 Cambridge Grand Forks, ND 58203	2120 Nagel Drive Bismarck, ND 58501	September 9-12
Ohio Alpha Ohio University	<b>Julie Marie Hochwalt</b>	<b>OHIO</b> 6 S College Street Athens, OH 45701	302B 85 N Court Street Athens, OH 45701	September 16-25

<i>Chapter &amp; School</i>	<i>Name of Chapter Membership Chairman</i>	<i>School Address of Chapter Mem. Chrm.</i>	<i>Summer Address of Chapter Mem. Chrm.</i>	<i>Dates of Major Rush</i>
Ohio Beta Ohio State University	<b>Andrea Borton</b>	1845 Indianola Avenue Columbus, OH 43201	227 E 15th Avenue Columbus, OH 43201	September 18-26
Ohio Epsilon University of Toledo	<b>Kelly A. Barkimer</b>	2999 W Bancroft St. #C-1 Toledo, OH 43606	1117 Eton Toledo, OH 43615	September 12-17
Ohio Zeta Miami University	<b>Amy A. Moeller</b>	126 Minnich Hall Oxford, OH 45056	1709 Fawnvalley Drive St. Louis, MO 63131	January 4, 1995
Ohio Eta Denison University	<b>David Sanders</b>	425 W College Street Granville, OH 43023	219 Chrislena Lane West Chester, PA 19380-4151	January 1995
Ohio Theta Bowling Green State University	<b>Christina A. Owens</b>	Pi Beta Phi House Bowling Green, OH 43403	155 Eighth Avenue Tiffin, OH 44883	August 17-23
Ohio Iota University of Dayton	<b>Meghan D. Shamon</b>	1221 Alberta Street Dayton, OH 45409	5838 W Lake Road Auburn, NY 13021	September 5-18 January 1995
<b>OKLAHOMA</b>				
Oklahoma Alpha University of Oklahoma	<b>Julie K. Langdon</b>	1701 Elm Avenue Norman, OK 73072	7608 S Erie Tulsa, OK 74136	August 11-17
Oklahoma Beta Oklahoma State University	<b>Stacey Renee Franklin</b>	324 S Cleveland Stillwater, OK 74074	920 W 4th Stillwater, OK 74074	August 11-17
<b>OREGON</b>				
Oregon Alpha University of Oregon	<b>Stacy Ann Knudsen</b>	1518 Kincaid Street Eugene, OR 97401	5525 SW Omaha Court Tualatin, OR 97062	September 20-25
Oregon Beta Oregon State University	<b>Amy Lorraine Ries</b>	2685 NW Taylor Corvallis, OR 97330	5750 SE Crystal Lane Milwaukie, OR 97267	September 20-25
Oregon Gamma Willamette University	<b>Elizabeth M. Wilson</b>	900 State Street, H-230 Salem, OR 97301	1401 SW Highland Road Portland, OR 97221	January 18-21
<b>PENNSYLVANIA</b>				
Pennsylvania Beta Bucknell University	<b>Darienne A. Lublin</b>	Box C-3948 Bucknell University Lewisburg, PA 17837	24 Pierrepont Street Brooklyn, NY 11201	September 5-24
Pennsylvania Gamma Dickinson College	<b>Kimberly Lemmonds</b>	Dickinson College HUB 1486 Carlisle, PA 17013-0928	7 Franklin Drive Mahopac, NY 10541	September- October
Pennsylvania Epsilon Pennsylvania State University	<b>Meredith James</b>	5 Heister Hall University Park, PA 16802	17525 Hillcrest Livonia, MI 48152	August 28-September 13
Pennsylvania Zeta Washington & Jefferson College	<b>Rebecca Titus</b>	50 S Lincoln Street, Box 86 Washington, PA 15301	3 Mars Drive McKees Rocks, PA 15136	January 30- February 3
Pennsylvania Eta Lafayette College	<b>Kristen L. Johnson</b>	Box 9485 Easton, PA 18042-1783	73 Woodside Avenue Rockaway, NJ 07866	January 21-29, 1995
Pennsylvania Theta Villanova University	<b>Amy Lynn Bandzes</b>	Dougherty Hall Box 204 Villanova, PA 19085	24 Butternut Circle Wethersfield, CT 06109	January 12-21, 1995
Pennsylvania Iota University of Pennsylvania	<b>Sharon Jindal</b>	3916 Spruce Street Philadelphia, PA 19104	4035 Baltimore Avenue Philadelphia, PA 19104	January 17-29, 1995
<b>SOUTH DAKOTA</b>				
South Dakota Alpha University of South Dakota	<b>Jennifer Erin Conway</b>	118 N Plum Vermillion, SD 57069	1115 Lawndale Drive Wayne, NE 68787-9659	September 19-24

<i>Chapter &amp; School</i>	<i>Name of Chapter Membership Chairman</i>	<i>School Address of Chapter Mem. Chrm.</i>	<i>Summer Address of Chapter Mem. Chrm.</i>	<i>Dates of Major Rush</i>
Tennessee Beta Vanderbilt University	<b>Sara Burns-Sacknoff</b>	<b>TENNESSEE</b> 118 24th Avenue South Nashville, TN 37212	228 Marlborough Street Boston, MA 02116	January 10-21, 1995
Tennessee Gamma University of Tennessee	<b>Lori A. Whitson</b>	1531 Cumberland Ave. Knoxville, TN 37916	1531 Cumberland Ave. Knoxville, TN 37996	August 20-27
Tennessee Delta Memphis State University (University of Memphis)	<b>Kim Foster</b>	PO Box 528035 Memphis State Univ. Memphis, TN 38152	1394 Oak Manor Memphis, TN 38119	August 22-27
Texas Alpha University of Texas	<b>Elizabeth Crystal</b>	<b>TEXAS</b> 2300 San Antonio Austin, TX 78705	2300 San Antonio Austin, TX 78705	August 27- September 4
Texas Beta Southern Methodist University	<b>Elizabeth L. Reagan</b>	3101 Daniel Dallas, TX 75205	3101 Daniel Dallas, TX 75205	January 9-14, 1995
Texas Gamma Texas Tech University	<b>Carrie Lou Thornton</b>	PO Box 4324 Tech Station Lubbock, TX 79406	2717 3rd Street #302 Lubbock, TX 79415	August 22-27
Texas Delta Texas Christian University	<b>Jenni M. Scott</b>	TCU, PO Box 29704 Fort Worth, TX 76129	TCU, PO Box 29704 Fort Worth, TX 76129	August 20-24
Texas Epsilon University of North Texas	<b>Melanie E. Leonard</b>	UNT, PO Box 13187 Denton, TX 76203	1030 Dallas Drive #224 Denton, TX 76205	August 21-26
Texas Zeta Baylor University	<b>Carrie Campbell</b>	PO Box 85618 Waco, TX 76798-5618	8510 Oakdale Waco, TX 76712	January 3-7, 1995
Texas Eta Texas A&M University	<b>Carrie J. Ball</b>	1601 Munson Avenue College Station, TX 77840	PO Drawer BL College Station, TX 77841	August 22-28
Utah Alpha University of Utah	<b>Amanda Alise Hanks</b>	<b>UTAH</b> 1443 E 100 South Salt Lake City, UT 84102	7677 Keswick Rd Sandy, UT 84093- 6257	September 19-24
Vermont Beta University of Vermont	<b>Lilli Goldberg</b>	<b>VERMONT</b> 369 S Prospect Avenue Burlington, VT 05401	502 Orienta Avenue Mamaroneck, NY 10543	September 9-18
Virginia Gamma College of William & Mary	<b>Leigh Cooper Sherwood</b>	<b>VIRGINIA</b> Pi Beta Phi - Sorority Ct. Richmond Road Williamsburg, VA 23186	Rt 1 Box 180-A Glasgow, VA 24555-9766	September 1-11
Virginia Delta Old Dominion University	<b>Kathrine V. Drapela</b>	2122 Webb Center Norfolk, VA 23508	838 W 49th Street #2 Norfolk, VA 23508	September 14-16
Virginia Epsilon University of Virginia	<b>Laurie Ann Zapalac</b>	1509 Grady Ave. Charlottesville, VA 22903	2412 Harris Blvd Austin, TX 78703-2406	January 15-28, 1995
Virginia Zeta Virginia Polytechnic Institute & State University	<b>Stephanie Schoonover</b>	301 SPH-E, VA Tech Blacksburg, VA 24060-0028	902 Green Countrie Dr. West Chester, PA 19380-1854	January 14-23, 1995



<i>Chapter &amp; School</i>	<i>Name of Chapter Membership Chairman</i>	<i>School Address of Chapter Mem. Chrm.</i>	<i>Summer Address of Chapter Mem. Chrm.</i>	<i>Dates of Major Rush</i>
Virginia Eta University of Richmond	<b>Erin Mary Neary</b>	PO Box 55 University of Richmond Richmond, VA 23173	10 Scatacook Trail Weston, CT 06883-1312	January 15-22, 1995
Virginia Theta Washington & Lee University	<b>Mary Remington Saunders</b>	PO Box 1559 Lexington, VA 24450	1600 Fincastle Road Lexington, KY 40502-1916	January 5-20, 1995
Washington Alpha University of Washington	<b>Jolie Tracy</b>	<b>WASHINGTON</b> 4548 17th NE Seattle, WA 98105	11426 112 Place NE Kirkland, WA 98033- 4546	September 15-21
Washington Beta Washington State University	<b>Amy Hittle</b>	NE 825 Linden Avenue Pullman, WA 99163	411 N 61st Avenue Yakima, WA 98908	August 19-23
Washington Gamma University of Puget Sound	<b>Jenny Tsoulos</b>	U.P.S. Smith Hall Tacoma, WA 98416	321 Pico De La Loma Escondido, CA 92029	September 12-22 January 15-22, 1995
West Virginia Alpha West Virginia University	<b>Hallie L. Dasher</b>	<b>WEST VIRGINIA</b> 1493 University Avenue Morgantown, WV 26505	20718 Forestwood Drive Strongsville, OH 44136	September 10-18
Wisconsin Alpha University of Wisconsin	<b>Maureen A. McNally</b>	<b>WISCONSIN</b> 130 Langdon Street Madison, WI 53703	628 N 74th Street Wauwatosa, WI 53213	September 7-17
Wisconsin Delta Marquette University	<b>Megan E. Bosshart</b>	915 N 15th St. #304 Milwaukee, WI 53233	Apartment L 1311 West Kilbourn Milwaukee, WI 53233	September 1994
Wyoming Alpha University of Wyoming	<b>Susan Taylor</b>	<b>WYOMING</b> Pi Beta Phi 1512 E Sorority Row Laramie, WY 82070	3241 Alta Vista Torrington, WY 82240	August 27-30

## CANADA

Alberta Alpha University of Alberta	<b>Lee Heidecker</b>	11050- 86th Avenue Edmonton, AB T6G 0X6 T6G 0W9 CANADA	Box 549 Coronation, AB T0C 1C0 CANADA	September 18-23
Ontario Alpha University of Toronto	<b>Julie Dodaro</b>	220 Beverly Street Toronto, ON M5T 1Z3 CANADA	1744 Bough Beeches Blvd Mississauga, ON L4W 2B9 CANADA	September 19-30
Ontario Beta University of Western Ontario	<b>Michelynn Poirier</b>	293 Central Avenue London, ON N6B 2C9 CANADA	293 Central Avenue London, ON N6B 2C9 CANADA	September 19-30

# Community Service

California Alphas Sarah Mather, Kristina Aberg, Karen Hertz, Dana Silbiger, Kristen Sidell and Susan Urstein from Stanford participated in the Race for the Cure, an annual run to raise money for breast cancer research. This year's 5K run took place in October in San Francisco's Golden Gate Park.

Each Tuesday a group of **Arkansas Alphas** from the **University of Arkansas** play with children from the Richardson Center, a local school and day care center. Arkansas Alphas held their annual spaghetti dinner fund-raiser in November. Some of the proceeds were given to the Arkansas Children's Hospital.

**Florida Epsilons** at the **University of Central Florida** have been involved in several community service projects. The chapter held an Easter Egg Hunt for children of alumnae and local school children. Members volunteer at the Coalition for the Homeless reading bedtime stories to children. The Orlando Rescue Mission also benefits from Pi Beta Phi as members volunteer to feed the homeless.

In addition to their Women's Wheels, in which volunteers assist campus women needing rides during evenings, the **Indiana Beta Chapter** at **Indiana University** has developed two new community service projects. Chapter members are now going to the Bloomington Boys and Girls Club where they tutor and play games with the children and the Hoosier Hills Nursing Home where chapter members visit with the residents.

**Virginia Deltas** at **Old Dominion University** helped raise money for a fellow student who underwent a bone marrow operation. The student's family needed money to cover recovery costs, so the chapter placed fund-raising cans around the campus allowing all students the opportunity to donate money. The chapter also got involved in a community service project, Angel Kiss, a program set up to raise money for children born with blood pathogenic diseases. The chapter volunteered to help raise money through a carnival for the children.

Three **Michigan Alphas** received scholarships from **Hillsdale College** to begin or help with programs in the



community. Jennifer Courdrey established a big sister/big brother program at Key Opportunities, a business that employs mentally and physically handicapped adults. Becky Hamm volunteers her time as a Girl Scout leader and is a helper in the "Kids Need Moms" program in which she helps transport and oversee kids visitation with moms who are in prison. Brittiney Stanger has decided to take her job, working with Special Olympics, one step further by establishing a big sister/big brother program for the Special Olympics children.

**Virginia Thetas** Kim Schooley and Laina Ewan give 24 hours a week to the Lexington Rescue Squad working as certified Emergency Medical Technicians. Megan Fernstrum has applied her horseback riding talents to a program called Ride with Pride. She helps disabled individuals learn and participate in horseback riding. Julie Ayres and Tricia Coughlin are big sisters in Lexington. The **Washington and Lee Chapter** adopted a family and provided them with food for the holidays. In the spring, the chapter helped build Kids' Playce, a local playground for Lexington children.

For Halloween, the **New Mexico Beta Chapter** had trick or treaters down the hallway of the Pi Phi house at **New Mexico State University**. The children and their mothers are staying at La Casa, a shelter for battered women. The chapter also participated in a semester-long philanthropy for the Gospel Rescue Mission, a homeless shelter. Every three weeks, during interest group night, members brought two to three items to donate to the mission. During one interest group meeting, the chapter held a coat and blanket drive to help the mission prepare for the cold weather season.

The **California Alpha Chapter** at **Stanford University** held a fund-raiser for the Stanford Rape Crisis Council. The 1994 pledge class sold tickets for a spaghetti dinner, and they put on their chef hats to cook the meal. The Stanford Rape Crisis Council received a check for more than \$800. The chapter also created a weekly clothing drive for the homeless in Palo Alto, California. In April, California Alphas participated in the March of Dimes WalkAmerica.

**Wisconsin Alpha** Heather Sander, a student at the **University of Wisconsin**, volunteers at Emerson Elementary School with the CASPER Program. CASPER stands for the Collaborative After School Program of Education and Recreation. The kids involved in this program have no homes—many of them live at the YMCA. After their regular school day, they come by bus or taxi to enjoy an afternoon of fun and learning. For five years Wisconsin Alphas have been leading Brownie Troop #866 in Madison, Wisconsin.

The 1994 pledge class of **Texas Zeta** spent a great deal of quality time with children from the Methodist Home, a home for youths with troubled backgrounds. Molly Christopher and Emilie Johnson scheduled a trip to Galiana, Mexico for spring break. The two **Baylor University** Pi Phis worked in an orphanage washing clothes, cleaning, cooking, gardening, and helping children with their English skills.

**Alabama Alphas** held their first ArrowSpike volleyball tournament at **Birmingham-Southern College** in April. Money donated by sponsors and obtained through the sale of T-shirts was given to Arrowmont. Chapter members also participated in a campus-wide Outreach Day, volunteering for several different community projects.

Beth Wood picked up trash for Project Pride while Sondra Nixon, Allyson Fertitta, Johanna Crowe, Adrienne Simon and Elizabeth Ellis gave the interior of the Birmingham Humane Society a much-needed paint job.

The **Pennsylvania Etas** at **Lafayette College** serve as role models in a program called Girl's Talk at the Easton Girls and Boys Club. Neighborhood preteen girls come and meet with Pi Phi and discuss various selected topics and interests.

Members of the **Illinois Iota Chapter** participated in an Adopt-a-School program providing tutoring, enrichment programs, study hall monitoring and many different games as after school activities for local schools. Another program members were involved in was Into the Streets. Pi Phi at **Illinois State University** helped at homeless shelters, nursing homes, and other community organizations.

This spring, **Oregon Gammas** held their annual Teeter-Totter Marathon involving a 24-hour attempt to keep the Pi Phi teeter-totter going. The proceeds benefited a non-profit youth camp in southern Oregon for children who have cancer. The **Wilamette University** Pi Phi also held an Arrowspike volleyball tournament raising over \$800 for the Salem, Oregon Literacy Project.

In March, **Virginia Zetas** from **Virginia Polytechnic Institute and State University** paired with Sigma Alpha Epsilon to sponsor their first Hoopfest. They organized a three-on-three basketball tournament as a fundraising event for Arrowmont.

This past spring, **Missouri Betas** from **Washington University** co-sponsored a Hair-Cut-a-Thon with the members of Kappa Sigma Fraternity. The proceeds were donated to a young St. Louis boy in need of an organ transplant. The chapter also co-sponsored a Twister Tournament with the members of the Sigma Phi Epsilon Fraternity. The proceeds from this were donated to the young boy and to Arrowmont.

The **Wyoming Alpha Chapter's** annual highway clean project takes place early in the year, and involves almost every Greek organization on the **University of Wyoming** campus adopting a two-mile section of local highway and maintaining it.

As a chapter, the **New Jersey Alphas** have renovated a public park,

helped local high school students raise money for the YWCA at their annual fair, spent time with senior citizens talking and playing games, and landscaped homes with Habitat for Humanity. Pi Phi also provided child care at Communiversy, **Princeton University's** annual town spring fling. Carol McLaughlin, a member of the Student Volunteer Council Board of Directors, was involved in prison outreach, Wee Care, a young mothers help program, and Big Brothers/Big Sisters. Melissa Hawes and Kristi Rowan have directed a teenage shelter project.

**Auburn University** Pi Phi co-hosted a party for Project Uplift children and their sponsors. **Alabama Gammas** also delivered Valentines to a local retirement home and visited with the residents.

**Washington Betas** held their annual Pancake Feed to raise money for Pullman's Habitat for Humanity. The **Washington State University** Chapter was able to raise more than \$2,000.

**Pennsylvania Thetas** from **Villanova University** volunteered at the Special Olympics as both athlete escorts and chaperones. Regina Crawford is co-chair of Balloon Day, a fair given for physically and mentally handicapped children. The AIDS quilt came to campus during AIDS Awareness Week, and members sold ribbons and acted as quilt monitors. Lisa Wadors performed in a dramatic play about the epidemic and the founding of the Names Project.

**Florida Alphas** held their annual Head Start Easter party with the Delta Sigma Phi. Head Start is an organization devoted to helping underprivileged children. The **Stetson**

**Ohio Iotas Meghan Shamon, Sarah Baughman and Ellen Sand** volunteered at a **United Cerebral Palsy Telethon** at the **University of Dayton**.

**University** Pi Phi also conducted a craft sale during Homecoming weekend. Proceeds went to Arrowmont.

**Iowa Betas** have started a community service project called Adopt-a-Grandparent. Pi Phi regularly visit a resident at the nearby nursing home and spend time with their new grandparent. In January, the chapter held an all-night dance to raise money for the Chris Street Memorial Fund. Nine Pi Phi helped plan the alcohol-free dance. More than 250 people attended the dance, helping the **Simpson College** Chapter raise \$500.

Last Easter, **New Mexico Alphas** volunteered their time and participated in a community service project with the Lambda Chi Alphas. Members went to the **University of New Mexico** Children's Hospital and spent time with ill children by playing the Easter Bunny, painting eggs, and telling stories. For Valentine's Day, the chapter sold raffle tickets for Valentine's Day dinners for two at several nice restaurants. The proceeds went to a homeless shelter in Albuquerque.

This spring, **Oregon Alpha** continued the traditional Arrow Challenge, a frisbee-golf tournament held on the **University of Oregon** campus. Adopt-a-Highway is also a part of Oregon Alpha community service. The highway cleanup sparked the interests of members to the Adopt-a-Path program in which the chapter cleans the paths that surround Eugene and the University of Oregon campus.

**Iowa Zetas** at the **University of Iowa** were presented the Outstanding Fraternity Award from the Hospice Road Races for raising the most money as an individual chapter.



Each year, the **Arkansas Beta Chapter** donates funds to the local chapter of Easter Seals through involvement in a Pi Kappa Alpha Fraternity-sponsored fund-raiser. Several Arkansas Betas volunteered their time to answer telephones at the 1994 Easter Seals Telethon held in March. Last December, the **University of Arkansas at Little Rock** Student Government Association sponsored an annual Christmas project. The Association brought students from a local lower-income elementary school to the university to have lunch and spend the day touring the campus with student representatives. Arkansas Betas raised and donated the money necessary for a portion of the transportation expenses. In April, the chapter participated in a bowl-a-thon sponsored by the Make-A-Wish Foundation. Prior to the event, members solicited donations for the cause.

**Virginia Etas** at the **University of Richmond** are involved in tutoring at Crestview Elementary School in the afternoons.

**Louisiana Alphas** organized the fourth annual Rock the CASA, a benefit concert held by Pi Phis and seven other Greek groups on the **Louisiana State University** campus to raise money for CASA, Court Appointed Special Advocates for Children. CASA is an organization which aids abused children whose cases are being reviewed by the courts. This was the

fourth year that Louisiana Alpha was the leader and main contributor in the organization of this event.

**South Dakota Alphas** sponsored a Halloween fun house for area children. Other projects the **University of South Dakota** Pi Phis have participated include helping with March of Dimes, trick or treating for UNICEF, beautifying the community through highway pick-up, caring for children during parents meetings for the graduate students and participating in a telethon for the South Dakota Public Television.

**Pennsylvania Iotas** at the **University of Pennsylvania** have adopted Dixon House as their local philanthropy. Dixon House is an after-school facility for South Philadelphia children. Last fall, the chapter raised more than \$300 for Dixon House by selling final exam survival kits. Valerie Cashour is active in ACCESS, the Active Coordinated Coalition Efforts Sponsored by Students, a nonprofit organization which encourages unique and innovative community service projects. Judy Tieh participates in TEACH West Philadelphia, a tutoring/mentoring program for Asian refugee children.

**Arizona Gammas** at **Northern Arizona University** volunteered at the Los Arcos Health Care Center participating in activities such as decorating the center for Halloween, making and delivering Christmas cards to each

resident, and performing rush skits for the residents. The chapter also volunteers at the Flagstaff Women's Shelter.

The second annual Pi Beta Phi Arrow Run was sponsored by **Ohio Beta** in April. The 5K run was routed through the **Ohio State University** grounds. Proceeds from the run were donated to Arrowmont.

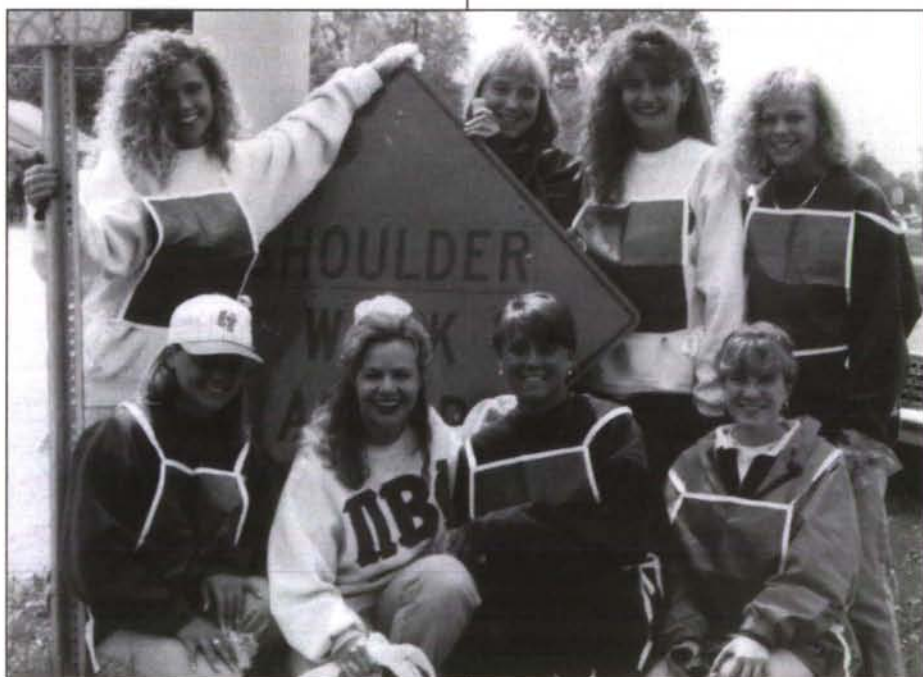
Each year **Illinois Alphas** join the Alpha Tau Omega Fraternity at **Monmouth College** on Halloween and trick or treat for the Jamieson Center. Both organizations ask for old clothes and canned foods and give the collections to the community center. This year at least 30 bags of clothing were donated as well as a large quantity of canned goods. Chapter members also participate in Dollar Days, collecting money on behalf of Muscular Dystrophy.

Chapter members of **Nevada Alpha** at the **University of Nevada** got involved in a local program called Chums during the 1993-94 academic year. The purpose of this philanthropy was to help underprivileged children in elementary schools. Each week volunteers met with their designated student and tutored them. The chapter also sponsored a book drive to provide reading material for underfunded elementary schools.

A major chapter effort for **Tennessee Betas** at **Vanderbilt University** is designed to help the Bill Wilkerson Center for the hearing impaired. The fall philanthropy, Blues Blast, benefits the center. In addition, many Pi Phis volunteer for the Bill Wilkerson Center throughout the year. A number of Tennessee Betas participated in an alternative spring break. Some went to Guatemala and helped build housing and sanitation facilities. Some went to inner-city Detroit to aid the homeless, while other alternative spring breakers traveled to Florida to work on conservation projects.

Each year, **Arizona Betas** at **Arizona State University** host Arrowspike. The event benefits Child Help USA, a program for abused children. The chapter is also involved in Greek Week activities with all proceeds benefiting Camp Sunrise, a camp for children with cancer.

**Ohio Epsilons** from the **University of Toledo** help keep the community clean with Adopt-a-Highway.





**Washington Gammas helped with an after school program at McCarver Elementary School in downtown Tacoma. They spend several hours a week tutoring kids with their homework and helping to find activities for them such as sports, field trips, and a recent Easter Egg Hunt.**

**North Carolina Gamma** is involved in several community service projects at **Wake Forest University**. Last Halloween the chapter volunteered to set up stands of games for underprivileged children in Winston-Salem for Project Pumpkin. Pi Phis escort the children around the campus to each game stand dressed in costume.

**West Virginia Alpha** Nikki Tennis volunteers for Big Brothers/Big Sisters and is the vice-president of Circle K, a local service organization that works with such organizations as the Special Olympics. The American Red Cross is aided by Amy Chase who teaches Community CPR and Liz Oliphant, an office volunteer. Liz is also a volunteer for an adult day care center and teaches swimming to children. Robin Miller serves several environmental groups and Jennifer Shifflet is a volunteer member of the Mountaineer Council which serves **West Virginia University** alumni and their children.

**Idaho Alphas** participated in their annual Rock-a-Thon in conjunction with **University of Idaho's** Lambda Chi Alpha chapter. Members rocked a large wooden rocking chair for twenty-four hours to support the Moscow, Idaho Humane Society. In December, during the Christmas shopping season, Pi Phis worked as gift wrappers to support the Hospice of the Palouse. This local organization cares for the home-bound elderly.

**Pennsylvania Epsilons** participated in the country's largest student-run philanthropy, the Panhellenic-Interfraternity Council's Dance Marathon at **Penn State University**. Pennsylvania Epsilons

were involved as members of the operations committee, the morale team and as dancers. The Dance Marathon raises millions of dollars each year for the Four Diamonds Fund which benefits juvenile cancer.

The **Texas Eta Chapter** recently participated in the 3rd annual Aggie Replant, a growing tradition at **Texas A & M**. Students planted more than 20,000 trees to help replenish the trees used in the Texas A & M bonfire each year. The chapter also participated in the 12th annual Big Event, a 4,500 student service project at the university. The Big Event is an opportunity for the students to give back to the community through 225 various projects.

Dance Marathon is **Northwestern University's** largest philanthropy, and every year **Illinois Epsilon** Pi Phis contribute countless hours to make sure it is a success. This year was Dance Marathon's 20th anniversary and the event raised \$180,000 for the Leukemia Research Foundation. Junior Marjorie Rosamarin is an active volunteer at the Lincoln Park Zoo in Chicago. Since last summer, Marjorie has been busy filing animal reports, keeping animal inventories and observing surgical procedures. She hopes to attend veterinary school and later work as a veterinarian for large farm animals.

**Mississippi Betas**, in cooperation with Students for Environmental Awareness, helped petition for a recycling program for the **University of Mississippi** and the surrounding Oxford community. A program was adopted by the university in March. The week before Easter, Mississippi Beta members enjoyed themselves serving food and giving Easter baskets to

the residents of the Golden Years Retirement Home. The chapter also held their annual King of Hearts philanthropy project from which more than \$3,000 was contributed to Arrowmont.

This spring, **Memphis State University** sponsored Operation Feed, a food drive to help feed the homeless. **Tennessee Deltas** collected 76 non-perishable items for this cause.

**Oklahoma Alpha** Emily Chambers spends several days a week volunteering at the Norman Regional Hospital near the **University of Oklahoma**. She volunteers in the emergency ward, helping patients and assisting the hospital staff in many areas. During Greek Week, Oklahoma Alphas sold shamrocks, collecting more than \$600 to benefit the Muscular Dystrophy Association. Mary Frances Anderson, Kristi Kretschmar and Stephanie Lease participate in the Big Brothers/Big Sisters program.

**Connecticut Beta** is one of many groups sponsoring Communitarity Day, a day-long festival in April when the surrounding community is invited onto the **Yale University** campus to enjoy hearing bands play, singing groups perform, and to learn about different campus events.

**Pennsylvania Zetas** at **Washington and Jefferson College** worked at a haunted house sponsored by the local Jaycees this past fall. In the spring, Pennsylvania Zetas sponsored a Panhellenic Pool Tournament giving the profits to an organization called C.R.Y. Community Resources for Youths.

**Kentucky Gammas**, with the Easter Bunny in tow, visited the Shriners Crippled Children's Hospital for a party and Easter Egg Hunt. The chapter also adopted Telford Community Center as a local philanthropy. Once a month, **Eastern Kentucky University** Pi Phis visit the community center and play games with the children.

Seventeen fraternities participated in **Missouri Alphas** Big Man on the Court, philanthropy and basketball tournament. The king candidates spent time reading stories to children at the local Head Start program. The event raised approximately \$2,000 for Arrowmont. The chapter members also joined a campus-wide effort to bring the AIDS Quilt to the **University of Missouri**.

Each year **New York Delta** votes on an organization to which the chapter will donate proceeds from each philanthropy. This past spring, the chapter chose Make-A-Wish, an organization that grants wishes to terminally ill children. Make-A-Wish granted a wish to current chapter president Tiffany Bangs several years ago. Tiffany has defeated aplastic anemia and celebrated her fifth year in remission. Last fall she founded Student Wishmaker at **Cornell University**. An external fund-raising group for Make-A-Wish, Student Wishmakers' aim as an organization is to increase awareness of Make-A-Wish and to aid the Central New York Chapter of Make-A-Wish in their work by providing them with trained student volunteers. Along with two other sororities and three men's fraternities, New York Delta hosted a fund-raising party in early April that benefited Make-A-Wish.

**Ohio Theta's** major philanthropic event at **Bowling Green State University** is Mud Tug. This is a Tug-of-war between fraternities and sororities over a pit of mud. The chapter raised \$2,022 through entrance fees, donations, raffle tickets and sweatshirt sales for the event. All of the proceeds were given to Arrowmont.

Each year at the **University of Kansas**, a musical revue, Rock Chalk Revue, raises thousands of dollars for the local United Way. In addition to donating money, various Greek organizations donate time. A sorority and fraternity team together to compile as many volunteer hours as possible. This year, **Kansas Alpha** teamed with the men of Beta Theta Pi to donate more than 1200 community service hours. This accomplishment earned the Kansas Alphas a Gold Award in the contest for Most Charitable Organization.

Several **Virginia Gammas** volunteered their time in assisting fellow student, Jay Bukzin, in running a community-wide bone marrow drive. Jay's objective was to search for a marrow match for his younger brother, as well as for the many others in need of this assistance. Chapter members at the **College of William & Mary** donated blood for the bone marrow test and also helped run the drive.

Each year **Alabama Betas** at the **University of Alabama** hold their biggest philanthropy, The Arrow Open, a four-man scramble golf tourna-

ment, held every fall at a local golf course. All proceeds from the Arrow Open go to Parent Advocates of Down's Syndrome. Prizes are donated by local businesses.

**California Kappas** at the **University of California, San Diego** helped the local community raise awareness about keeping the ocean clean for dolphins.

The Pi Phis aided in painting storm drainpipes which stated, "Keep our waters clean," along with a stencil of a dolphin. The chapter also had a successful philanthropic event to raise money for Arrowmont. During the final week of winter quarter, Pi Phis sponsored a clothing sale on campus from Apparel Designer Zone.

**Montana Alphas** participated in a car wash on the **Montana State University** campus. The donations were given to the local food bank and Big Brothers/Big Sisters organizations. Montana Alphas also have been volunteering weekly in a Young at Heart program, spending time with elders. Some of the activities include water aerobics, arthritis workshops and cardiovascular workouts to improve their overall health and well being.

**Tennessee Gammas** participated in a philanthropic project on the **University of Tennessee** campus called On Target. The program pairs a different fraternity and sorority together twice a week to go to Whittle Springs Middle School to be with the kids after school. Instead of going home to an empty house, the kids have the option to stay at school and either get tutored, make arts and crafts or participate in a variety of recreational activities.

Students at the **University of Virginia**, **Virginia Epsilons** Elizabeth Guice, Mary Ritchie, Amanda Viles, Marte Barnacle and Jane Hamrick are active participants in the Charlottesville Big Sibling Program.

**Indiana Alphas** from **Franklin College** attended a Valentine's Dance at the Todd Aikens Health Center in February. The center cares for elderly people that are in need of medical attention.

**Illinois Zetas** Sherri Lamb, Epi Martinez and Jan Wenning recently received the Senior 100 Award. The **University of Illinois** Student Alumni Association gives an award for



**The Greater Baton Rouge Zoo** played host to Louisiana Beta's "Big Buddy" program in February. Louisiana State Pi Phis sponsor several activities each semester to spend time with underprivileged Baton Rouge youth.

outstanding excellence in academics, leadership, and community service to the top 100 seniors.

**Indiana Delta** held their second annual Arrowgames at **Purdue University** this past fall. More than \$2,200 dollars was raised for Arrowmont. The chapter also participated in a Secret Santa event with Sigma Alpha Epsilon for the second year. The two groups were paired to shop for gifts for needy children in the Lafayette area.

**Illinois Etas** at **Millikin University** sponsored a parents night out for Decatur area children. There were movies and games for more than 35 children. All proceeds were sent to Arrowmont.

Jennifer Harmon, Jennifer Stupfel and Diana Bacon, three members of the **California Iota Chapter** at **California State University, Chico** were selected as committee members of Chico State's Greek Week. Greek Week allows Chico State sororities and fraternities a chance to give something back to the community. Greek Week helps Chico's Boys and Girls Club through canned food drives, a blood drive, a silent auction and a Fun Without Alcohol Fair.

Former Chapter President of **Kentucky Beta**, Amy Lorne Rowell has contributed to organizations such as the Hope Center for the homeless and hungry and the Enrichment of the Arts program. She was recently awarded the title of Miss Christmas Seal by the American Lung Association for raising more than \$5,000 to help battle

the disease, a record amount raised in the contest's 44-year history. The chapter participated in the annual bowl-a-thon to benefit the Growing Together Pre-School in Lexington, Kentucky. The **University of Kentucky Chapter** raised in excess of \$300 in pledges to help fund the pre-school, which offers educational/developmental programs, day care and kindergarten services to over 160 children from the ages of six weeks to six years.

In October, Greeks of **Florida State University** pulled together as part of Homecoming and built a haunted house for the youth of Tallahassee. The chapter also collected and donated bags of clothing to needy families.

**Florida Betas** donated more than one thousand pounds of clothing.

**Illinois Theta's** recent work day benefited Peoria area alums and Arrowmont. Alumnae paid for the **Bradley University** Pi Phi to do household tasks such as painting, cleaning and polishing. All of the money was donated to Arrowmont.

Last fall, **California Betas** invited the students from Washington Junior High School to the Pi Phi house for lunch, and then gave a guided tour of the **University of California at Berkeley** campus. This junior high school educates children from low income, high minority areas. Realizing these children rarely continue their education beyond the secondary level, California Beta exposed them to the opportunities that lie beyond a high school education. The chapter also spent time visiting residents of the Claremont House, a retirement facility founded for individuals who must live in a supervised environment.

**New York Alphas** work closely with the UNPA (University Neighborhood Preservation Association). The chapter planted flower bulbs, and coordinated all volunteers for the Wescot Street Cultural Fair. With the help of UNPA, the chapter at **Syracuse University** sponsored Kid's Fair with Sigma Chi Fraternity. Other philanthropic events New York Alpha has participated in include serving 140 people meals through Rescue Mission, a Daffodil festival sponsored by Kappa Kappa Gamma which raises money for the Cancer Association, and Green-up which cleans up the university area.

Each class at **Pennsylvania Beta** has their own designated philanthropy.



Once a month **Texas Gammas** from **Texas Tech University** sponsor a dinner at the **Ronald McDonald House**. A different pledge class is designated to bring the meal each time.

As women progress through academic years, they progress through philanthropies. The sophomore class runs errands for the elderly of Lewisburg, doing such things as yard work, house cleaning and grocery shopping. The junior class delivered holiday gifts which were donated by students and faculty of **Bucknell University** in response to a giving tree. The senior class prepared and served Thanksgiving and Christmas dinners to individuals staying at a homeless shelter. The members go to the shelter in groups of five with a different group going each night for a week during the holiday season.

Philanthropic activities **California Zetas** at the **University of California at Santa Barbara** are involved in visiting the Hillside House, a residence and care center for individuals with cerebral palsy, hosting a Shots for Tots basketball tournament, playing with children at the Isla Vista Youth Project, coaching Special Olympics teams, and singing at the Casa Dorinda and Friendship Manor Retirement Homes.

**Iowa Etas** at **Drake University** volunteered to serve food to the homeless at a food mission in Des Moines, served refreshments at water stations during a bike-a-thon to raise money and awareness for breast cancer, gathered clothes for the homeless, and joined the Des Moines community in the annual MS Walk-a-Thon to raise money for the Multiple Sclerosis Society.

**Colorado Deltas** from the **Colorado School of Mines** participated in several philanthropic activities during the school year including a book and clothing drive to aid local families, a car wash to raise money for Arrowmont, and a weekly tutoring program for local high school students.

**California Deltas** from the **University of California, Los Angeles** have been involved in a program called Feed the Homeless. Each week, two Pi Phis and two Sigma Pis travel to Santa Monica where they spend an evening serving food.

**Kansas Betas** are involved in several philanthropic activities on the **Kansas State** campus and the local community. The chapter donated toiletry items to the Alpha Kappa Alpha Chapter for the Manhattan Women's Crisis Center. Other events in which the chapter participates include the racial ethnic harmony walk, the Delta Tau Delta blood drive, and the Big Brother/Big Sister Christmas party.

The pledges of **New York Epsilon** hosted a bowl-a-thon at **Rensselaer Polytechnic Institute**. **Chapter** members gathered in the bowling alley at RPI's Student Union to "Bowl for Kid's Sake," which benefited the local Big Brothers/Big Sisters Program. The chapter raised more than \$450 for the cause.

**Washington Alpha** Barb Larson interns for the Red Cross as the chairman for the National Red Cross Convention. This **University of Washington** Pi Phi also oversees the youth program for the Red Cross.

**Indiana Zetas** at **Ball State University** teamed up with Habitat for Humanity and built a house in Muncie, Indiana. Habitat for Humanity is a national not-for-profit organization that helps build and support the funding of houses for underprivileged people.

This year, **Michigan Betas** invited 50 children between the ages of 5 and 15 from disadvantaged environments to participate in their holiday celebration at the **University of Michigan**.

# Links to Literacy

PI BETA PHI FRATERNITY

by Jean Egmon

**Virginia Gammas** are implementing Links to Literacy through the local Headstart program and through the Adult Skills program sponsored by the **College of William and Mary**. The Pi Phis tutor children weekly through Headstart, and they assist the program with special events such as Easter egg painting and a pig roast. The Adult Skills program is for adults who have low reading abilities and for non-native speakers learning how to read, write and speak English.

**Montana Alphas** incorporate Links to Literacy by donating their time each week to the Child Advancement Program in Bozeman, Montana. The **Montana State** Pi Phis also tutor students in the local elementary and high schools.

Pi Phis at **Oklahoma State University** each give one hour a week to tutoring elementary school children. The program is called New Friends and was created by **Oklahoma Beta** Kerry O'Keefe.

Members of **Arkansas Beta** have developed a pen-pal program with a local elementary school as their Links to Literacy program. Each **University of Arkansas at Little Rock** member receives the name of a child with whom they correspond on a regular basis and form a mentor/friend relationship. The pen-pals also have picnics and other activities to become better acquainted.

**Colorado Gammas at Colorado State University** have established their Links to Literacy program at an elementary school where many of the teachers are members of the local Pi Beta Phi alumnae club and serve on the chapter's Alumnae Advisory Committee. Several times a week, the undergraduates enjoy the opportunity of tutoring first graders in the Fort Collins community and interacting with Pi Phi alumnae.



Featured in the Friends of the Jacksonville Public Libraries newsletter was this photograph of the Jacksonville alumnae presenting their book donation.

The **Houston Alumnae Club** held a benefit luncheon and style show entitled "It's A Small World" on March 26. Pi Phis, their children and their grandchildren served as models for the show. Richard Sherman, academy award-winning composer and lyricist of "It's A Small World" and many other Disney characters performed during the style show and luncheon. Sherman also entertained volunteers and children earlier that week at the Pi Beta Phi Children's Library at Texas Children's Hospital to commemorate the library's 10th anniversary. The luncheon and style show proceeds of more than \$100,000 are earmarked for the Pi Beta Phi Children's Library in Houston and for the Children's Resource Center at Arrowmont. The Houston Alumnae Club is a major supporter of Links to Literacy through the works of their li-

braries and by sponsoring the alumnae club award for outstanding Links to Literacy programming. The Houston Alumnae Club is also one of five Leadership Clubs within Pi Beta Phi, pledging \$30,000 in the Campaign for Arrowmont to establish the Children's Resource Center.

The **Jacksonville, Florida Alumnae Club** held a potluck for literacy dinner this past year to kick off their Links to Literacy programming. Each member brought a covered dish and a children's book to the club's monthly meeting. More than 100 books were collected and

donated to The Friends of the Jacksonville Public Libraries organization.

Gift bags filled with books were delivered by **Tulsa, Oklahoma Alumnae Club** members to the Domestic Violence Intervention Services, Inc. (DVIS) shelter in Tulsa, Oklahoma, during February. "We specifically chose the month of February for our first delivery to underscore sharing the gift of love with others," Sarah Buvinger Welch, Tulsa Alumnae Club Links to Literacy chairman, said. "The first delivery of 78 bags of children's books marked the starting point of what we believe will be an ongoing project." The Tulsa Alumnae Club's Links to Literacy project for DVIS is two-fold. First, bags of age-appropriate books are prepared as gifts for children who are waiting while their mothers complete paperwork to enter the shelter. New and gently-used books are gathered by the Tulsa alumnae for this purpose. The book collection campaign began in November to celebrate the first Pi Beta Phi International Links to Literacy Week. The second



objective is to create an adult library for the women who are living at the DVIS shelter. Members have collected several hundred books to begin building the library, and the first wall of bookshelves has been installed, thanks to the kind donation of club member Molly Rorschach Krumme. "I am thrilled how our club has embraced our first Links to Literacy project," Susan Parks Dornblaser, club president, said. "The project has been fully supported by our entire membership, and our literacy committee is made up of 18 women of diverse backgrounds and ages."

**California Deltas** participate in **UCLA's Project Pancake** which stands for People Assisting Non-reading Children and Adults for Knowledge Enrichment. The project was founded by the university's Community Service Commission to take on the serious problem of illiteracy in the Los Angeles area. Pi Phi volunteer their time by becoming tutors and traveling to the Mar Vista Gardens Housing Project, as well as the Watts Public Library.

**North Carolina Betas at Duke** continue their tutoring program with the Club Boulevard Elementary School in Durham, North Carolina. More than 30 chapter members spent a total of 40 hours per week with the underprivileged children, serving as teachers' aides, individual tutors and after school mentors. Club Boulevard coordinator Tina Clark, a Pi Phi junior, commented that the greatest aspect of her three years with the program was, "personally witnessing the improvement of individual kids over the years, and knowing that I had a part in it."



**Colorado Gamma Vicki Andrews tutors a first grade student at the chapter's Links to Literacy site.**

**Texas Zetas** Amy Fenton, Kim Johnson and Adria Alexander planned and organized a new service project for the **Baylor Pi Phi** called Operation Learn. The women worked with the librarians at the South Branch Library to design a program that would enable children in the Waco, Texas area to have an opportunity to get extra help with their homework from Texas Zeta members. Each Saturday, members were scheduled to be at the library from 10:00 a.m. to 1:00 p.m. and from 2:00 p.m. to 5:00 p.m. to tutor children.

Several Pi Phi from **California Kappa at the University of California at San Diego** have served as mentors for San Diego elementary school students through a partners at learning class at U.C. San Diego. Kimberly Mohoney, Michelle Kim, Julie Daignault, Susie Veladi and Dis Thayer have been paired with students who are struggling in school.

In March, members of **Ohio Theta** and **Ohio Epsilon** participated in a Links to Literacy event sponsored by the **Toledo Area Alumnae Club**. The **Bowling Green State University** and **University of Toledo** Pi Phi and Toledo area alumnae worked with two classes of third grade children from Oakdale Elementary School. Stations were set up to promote literacy through fun. Activities included unscrambling sentences, rhyming words and learning contractions.

The **Dallas Alumnae Club** held their 10th Annual Charity Fashion Show and Luncheon in March at the Loews Anatole Hotel. Highland Park Village, America's first shopping center, joined forces with Pi Beta Phi to present an exciting afternoon of spring fashions. This year's luncheon honored and celebrated "The 1994 Community of Angels." Pi Beta Phi alumnae were honored and recognized for their significant volunteer contributions to the civic enhancement of the Dallas community. Proceeds from the event benefit St. Philip's School and Community Center. A gift of \$75,000 will purchase and renovate the Pi Beta Phi Art and Literacy House on property adjacent to the St. Philip's campus. Classes in art and literacy will be taught to St. Philip's students and adult literacy classes will be offered to the community.



**Texas Gamma Kathy Langston** served as chairman of the **Pi Beta Phi Angel Library** at the **Children's Hospital of University Medical Center in Lubbock, Texas**. For fund raising, Kathy spent long hours organizing a community book drive, a read-a-thon, and solicited for donations. Kathy collected used books, bought new books and prepared the library for the opening. After the opening, she coordinated 100 Pi Phi at Texas Tech into orientation groups and volunteer schedules.

As part of the Links to Literacy Program, **New Jersey Alpha** Ashley Kline from **Princeton** taught prison inmates grammar and reading skills, and Sara Kantrow tutored Trenton High School students in English.

**Alabama Gammas at Auburn** volunteer two nights each week to help adults learn to read, write and gain other skills needed to receive their high school diplomas.

Julianne Christou, **Michigan Gamma's** Community Philanthropy Chair, brought Pi Phi and **Michigan State University's** Student Literacy Corps together. The Literacy Corps teaches reading to people ages 4 - 70 and helps promote literacy in the community. The chapter helped by donating books to the organization. Kristen Sawka, Michigan Gamma's President was involved in a program called Adopt-a-School. She volunteered two afternoons a week to help tutor third graders. This "After School Study Stop," put together by Tower Education Center and Michigan State University's Panhellenic Council, promotes better study habits as well as providing role models for elementary school students.

# Scholastic Achievement

## 4.0 Students

The following undergraduate students received a 4.0 GPA for the fall 1993 term.

### Alabama Alpha

Rebecca Mixon

### Alabama Beta

Cheryl Aday  
Jennifer Coffman  
Michelle Deluca  
Kacy Fortenberry  
Dana Nichols  
Amy Smith  
Leslie Wagner

### Alabama Gamma

Deanna Dyer  
Natalie Haser  
Allison McClure  
Valerie Scott  
Dana LeAnn Short  
Samantha Kam Smith

### Alberta Alpha

Jennifer Andruchow

### Arizona Alpha

Ashley Inbody  
Elizabeth Lynch  
Suzanne Paisley  
Erica Palko  
Janna Rauch  
Alese Stewart  
Chelsea Werner

### Arizona Beta

Elizabeth Looney  
Carolyn Nathan

### Arizona Gamma

Shannon De Groot  
Kerry Ostrand

### Arkansas Alpha

Ashley Chudy  
Jennifer Cupples  
Shannon Fidler  
Caroline Lowry  
Melissa Meadows  
Julie Mitchell  
Rene Pillow  
Rebecca Sample  
Dawne Winter

### Arkansas Beta

Stephanie Brunner  
Stephanie Chudy

### California Alpha

Jeannie Chung  
Lauren Gerber  
Shannon Gilmartin  
Melissa Hayden  
Natalie Jovanovic  
Stacy Klickstein  
Emily Kovner  
Jessica Mega  
Heather Muns  
Jane Nelson  
Bridget Pauly  
Lauren Pressman  
Holly Rawizza  
Marny Rush  
Nina Schou  
Eda Katharine Tinto  
Susan Urstein  
Sondra Ward

### California Beta

Victoria Citron  
Julie Fabian  
Michelle Madhok  
Laura Roberts  
Stephanie Wallace

### California Gamma

Natalie Compagno

### California Delta

Virginia Bergman  
Andrea Graham  
Kenyon Woolley

### California Zeta

Anne Bohnert  
Kristen Fleming  
Jill Hayward  
Jacqueline Malandaras  
Carrie Melmed  
Kelli Simpson  
Janis Wilson

### California Eta

Mary Angelus  
Elisa Torok  
Jennifer Willard

### California Theta

Christin Brown  
Melissa Diehl  
Kathryn Regimbal

### California Lambda

Suzanne Kavanagh  
Candice Rogers

### Colorado Alpha

Erika Fedge

### Colorado Gamma

Kendra Doepken  
Melanie Groendyke  
Debbie Smitham

### Colorado Delta

Diana Payne

### Connecticut Beta

Kendra Fowler  
Jennifer Plant

### Florida Alpha

Teresa Green  
Julie Mc Lean  
Tiffany Smith

### Florida Beta

Elizabeth Kontos  
Margaret Loretta Tiffin  
Lori Unger

### Florida Delta

Jennifer Berger  
Angela Cooley  
Lisa McCall  
Shelly Taylor

### Florida Epsilon

Jennifer Basler  
Dawn McCullough  
Staci Shapiro

### Georgia Alpha

Kelli Barnes  
Leslie Caldwell  
Jennifer Crumbley  
Kelly Daugherty  
Jessica Allison Edge  
Kristin Hamilton  
Heather Hardwick  
Stephanie Helms  
Kari Klusmann  
Allyson Pace  
Mary Hillary Powell  
Amy Christine Purks  
Kristina Sawyer  
Jennifer Tisdale  
Steffanie Walke

### Idaho Alpha

Lisa Gravelle  
Melinda Hill  
Elisha Stanard

### Illinois Alpha

Christine Stanton  
Korine Steinke

### Illinois Beta-Delta

Diana Delcastillo

### Illinois Epsilon

Laura Fialkoff  
Susan Lathrop  
Barbara Morrow  
Jennifer Simon

### Illinois Zeta

Christina Brown  
Audra Dulksnys  
Colleen Dunaway  
Julie Eck  
Leigh Ann Hemenway  
Kristen Isenhart  
Sarah Klimes  
Amy Russell  
Laura Segebart  
Jan Wenning

### Illinois Eta

Jennifer Russo  
Angela Snellenberger  
Pamela Shortal

### Illinois Theta

Michele Beck  
Rebecca Blachinski  
Danielle Black  
Susan Clayton  
Susan Finn  
Gina Wright

### Illinois Iota

Jennifer Christensen  
Juliet Hamlin  
Karyn Price  
Catherine Roberts

### Indiana Alpha

Melissa Bartlett  
Theresa Greco  
Misty Livengood  
Mary Beth Peel  
Angela Shirk  
Megan Scheuler

**Indiana Beta**

Brandy Bayman  
Richelle Wylie

**Indiana Gamma**

Renee Basler  
Carla Garino  
Anne Yaggy

**Indiana Delta**

Paige Arihood  
Angela Sansone  
Carrie Sippel

**Indiana Epsilon**

Jennifer Derrington  
Melissa Murray

**Indiana Zeta**

Erin Baker

**Indiana Eta**

Kimberly Crozier  
Denice Kallmyer

**Iowa Alpha**

Shari Woodbury

**Iowa Beta**

April Erickson  
Juli Holmes

**Iowa Gamma**

Ann Bryant  
Beth Duyvejonck  
Gitta Patel  
Michelle Wilson

**Iowa Eta**

Carolyn Krick  
Rebecca Hung  
Amy Lester  
Allison Pirri  
Racquel Reed  
Jenifer Steger

**Kansas Alpha**

Kimberly Almquist  
Chessa Bieri  
Loralee Bruse  
Hillary Franke  
Cara Kifer  
Stacey Paul  
Elizabeth Lynn Price

**Kansas Beta**

Hayley Briel  
Christine Claypool  
Melissa Davis  
Jodi Dawson  
Molly Hofmeier  
Amy Jaax  
Sharilyn Maechtlen  
Janell McElroy  
Danielle Spreier  
Stacey Stowell  
Cassandra Thompson

**Kentucky Alpha**

Tiffany Fenwick  
Christa Fischer  
Garah Gamblin  
Mary Herrick  
Kristin Johnson  
Stacie Loftin  
Coleen McFelea  
Jacqueline Vara McGraw  
Aiysha Malik  
Jenny Sponcil

**Kentucky Beta**

Shelly Cranfill  
Erin Draper  
Stephanie Messina  
Heather Pollard

**Louisiana Alpha**

Amy Graham  
Shari Heartfield

**Louisiana Beta**

Ann Davidson  
Emily Anne Daviet  
Christy Dimos  
Debra Frish  
Robin Hughes  
Cherie Kliebert  
Kristen Koehl  
Kelsey Kornick  
Barbara Newstadt  
Hannelore Rietschier

**Michigan Beta**

Ami Flam  
Mary Vrecek

**Michigan Gamma**

Sara Holzhausen  
Danielle Reid  
Karen Walther

**Minnesota Alpha**

Amy Arthun  
Amy Dahl  
Mara Levey  
Deidre McGrath  
Michelle Morgan

**Mississippi Alpha**

Candice Grubbs  
Merrin Morgan

**Mississippi Beta**

Nancy White

**Missouri Alpha**

Erica Bales  
Erin Been  
Becky Bihr  
Anne Bloom  
Megan Bright  
Jennifer Brown  
Sarah Casanova  
Sara Cobb  
Sherry Gallagher  
Carrie Grounds  
Jennifer Hawkinson  
Julia Jurgensmeyer  
Melissa Matthews  
Goli Mostoufi Moab  
Carrie Serati  
Karla Schmitt  
Gina Spalitto  
Shannon Trammell  
Kristan Walters  
Joan Wheeler

**Missouri Gamma**

Tara Bewley  
Lori Barnett  
Misty Bearden  
Angela Bullock  
Arlene Dimalanta  
Shelby Lea  
Tammy Singleton  
Laurie Weiser

**Montana Alpha**

Margaret Indreland  
Brett Speidel  
Tanya Wilczynski

**Nebraska Beta**

Victoria Anderson  
Carrie Bobbett  
Sara Bucy  
Marianne Hallinan  
Katherine Hamer  
Kristy Loftus  
Renee Pletka  
Tamara Plihal  
Michelle Spomer  
Kara Thompson

**Nevada Alpha**

Jill Nichols  
Jennifer Starkweather  
Alison Whitford  
Tara Wolff

**New Jersey Alpha**

Christa Beckner  
Bethany Johnson

**New Mexico Alpha**

Stephanie Meltzer

**New Mexico Beta**

Donna Jones  
Holly Mascarenas  
Amy McIntosh  
Andrea Ray  
DeAnza Valencia  
Arwen West  
Heather Wilson

**New York Gamma**

Jennifer Fadale

**New York Delta**

Amy Haveron  
Kelly Haveron  
Christina Lee  
Megan Lynam

**New York Epsilon**

Carolyn Foley  
Marcie Lavigne  
Erin Mahoney  
Meg Scott

**North Carolina Alpha**

Megan Williams

**North Carolina Beta**

Robyn Fader  
Elizabeth Grubbs  
Heidi Huber  
Audra Plenys

**North Carolina Gamma**

Allison Grayson  
Karen Lau  
Julie Polson  
Heather Rogers

**North Dakota Alpha**

Shelly Huber  
Kimberly Rumer  
Angela Thoreson

**Ohio Alpha**

Karen Baldoza  
Jodie Tuchman

**Ohio Beta**

Denise Cosenza  
Beth Strandberg

**Ohio Epsilon**

Jennifer Knapke

**Ohio Zeta**Michelle Davidman  
Catherine Dietrich  
Kellyn Feeney  
Emily Goodwin  
Gretchen Henteman  
Carrie McDaniel  
Kathryn Read  
Sarah Rossi  
Beth Ann Shively  
Daisy Smith**Ohio Eta**

Lynn Repasky

**Ohio Theta**Kathleen Crosby  
Leslie Doblanski  
Andrea Lance  
Casey Upham**Ohio Iota**Melodie Browning  
Amy Jo Carney  
Danielle Dobecki  
Mary Katherine Herrick  
Jennifer Luckman  
Jennifer Mueller**Oklahoma Alpha**Tami Dinsmore  
Karen Hutchens  
Kelsie Krafft  
Brooke Laird  
Stephanie Lease  
Stacey Maxwell  
April McCurdy  
Amy Monsour  
Whitney Riddle**Oklahoma Beta**Ashley Chaney  
Kelly Crooks  
Molly Fleming  
Jennifer Hanna  
Erin Holloman  
Julie Payne  
Becky Pfenning  
Sarah Shirley  
Coree Sinclair  
Arlene Van Gorp  
Heather Voth**Oregon Alpha**Sadie Carver  
Heidi Marshall**Oregon Beta**Paula Harding  
Christie Henderson  
Kendra Ibarguen  
Julie Odoms**Oregon Gamma**Suzanne Berry  
Amanda Cornwall  
Jennifer Fellers  
Amy McCallen**Pennsylvania Beta**Marnie Bartholomew  
Valerie Brady  
Laura Hinsman  
Susan Wagner**Pennsylvania Gamma**

Lara Diefenderfer

**Pennsylvania Epsilon**Deborah Smeltzer  
Kelly Wagner  
Michelle Weinberg  
Stacey Widen**Pennsylvania Eta**

Robyn Cohen

**Pennsylvania Theta**Kimberly Conroy  
Tammie Coyman  
Susan Falco  
Jennifer Griesel  
Angeline Maughan  
Jessica McIntyre  
Lisa Nicholas  
Kerry Roach  
Joanne Seminario**Pennsylvania Iota**Gretchen Hildebeitel  
Cigdem Tanrikut**South Carolina Beta**Tamara Hubert  
Nelly Welsch**South Dakota Alpha**Sarah Baker  
Stacy Eckert  
Heather Jacobson  
Paula Johnson  
Stacie Johnson  
Amy Redmond  
Kimberly Sander  
Lori Standish  
Nicole Young**Tennessee Gamma**

Heather Wright

**Tennessee Delta**Nora Christine Eason  
Johnna Reeder  
Stephanie Sanders  
Laura Sisterhen  
Laura Vaughn**Texas Alpha**Ashley Adams  
Jennifer Wise  
Whitney York**Texas Beta**Molly Griffith  
Kimberly Gustafson  
Shelley White**Texas Gamma**Leslie Crowder  
Julie Garner  
Ginda Greenstreet  
Becah Lavender  
Jennifer Shepherd  
Tracey Stevenson**Texas Delta**Beth Billeck  
Keena Burrage  
April Evans  
Leigh Gamble  
Kimberly Gratland  
Danielle Kunkle  
Mary Leslie Stocks**Texas Zeta**Amy Beth Clark  
Julie Durham  
Jennifer James  
Dana Neal  
Paige Powers  
Courtenay Puckett  
Keri Thurman  
Shannon Turner**Texas Eta**Amanda Allen  
Theresa Barton  
Jami Bowen  
Jennifer Colley  
Erin Friel  
Molly Linscott  
Jennifer Lumpkin  
Jill Mason**Texas Epsilon**Jennifer Elmers  
Lisa Robison  
Kim Walker**Utah Alpha**Emily Harris  
Heidi Hofmann  
Kristianna Landures**Virginia Epsilon**Ellen Dreyfus  
Katy Molen  
Christiana Ober  
Gretchen Wriston**Virginia Zeta**Lisa Canfield  
Patricia Edelman**Virginia Eta**Carrie Baumann  
Shana Gratton  
Abigail Johnson**Virginia Theta**Kerry Egan  
Megan Fernstrum  
Jennifer Shaker**Washington Beta**

Lisa Barborinas

**Washington Gamma**

Lori Conway

**West Virginia Alpha**Cynda Borchert  
Angela Brumfield  
Amy Lorraine Chase  
Janine Dyrwal  
Jennifer Knussman  
Laura Krogmann  
Nikki Tennis  
Sarah Wilson  
Kira Weinheimer**Wisconsin Alpha**Lani Brinkman  
Jamie Schwartz  
Becky Wickhem**Wyoming Alpha**Carrie Coleman  
Treva Sprout  
Kyndra Miller

# IN MEMORIAM

Initiation Year and Month and Year of Death follow each member's name.  
When submitting death notices to Central Office,  
please give month and year of death. Names cannot be listed without this information.

## Alberta Alpha

**Helen Margaret Smith**, 1931;  
January 1994

## Arizona Alpha

**Betty Warner Giddings**, 1938;  
February 1994  
**Anne Arnolds Knight**, 1946;  
December 1993

## California Beta

**Edna Furnald Jensen**, 1917;  
August 1993  
**Virginia Lum Niebling**, 1932;  
November 1993  
**Marie Hall Offutt**, 1931;  
March 1994

## California Delta

**Jean Rouse Griffin**, 1940;  
December 1993  
**Lucille Murray Hadley**, 1927;  
January 1994

## California Epsilon

**Phyllis Dorman**, 1949;  
December 1993  
**Patricia Lucero Heilbron**, 1949;  
December 1993

## California Eta

**Laura Owens Moss**, 1977;  
November 1993

## Colorado Alpha

**Aldean McGowen Patterson**,  
1919; March 1994  
**Sally Peebles**, 1930;  
December 1993  
**Isabella Moulton Smith**, 1923;  
August 1993  
**Hazel Gates Woodruff**, 1931;  
January 1994

## Colorado Beta

**Elma McClelland Eichelberger**,  
1914; November 1993  
**Betty Lyons Jacobs**, 1934;  
January 1994  
**Laura Braden Kintzele**, 1937;  
January 1994  
**Edna Lewis Vinacke**, 1911;  
January 1994

## Colorado Gamma

**Melonie Smyth Brammer**, 1981;  
March 1994

## Connecticut Alpha

**Jacqueline Dudack Boazman**,  
1947; December 1993  
**Janis Krauss Murano**, 1952;  
February 1994

## D.C. Alpha

**Anna Waring Eccleston**, 1922;  
February 1994  
**Beatrice Mason Gray**, 1921;  
January 1994

## Florida Beta

**Dorothy Blackwell Lupfer**, 1929;  
December 1993

## Florida Gamma

**Catherine Green Lyons**, 1930;  
July 1993  
**Jane Dorman O'Connor**, 1940;  
January 1994

## Illinois Delta

**Mary Griffith Blazer**, 1921;  
June 1993  
**Louise Sterne Schell**, 1921;  
August 1993

## Illinois Epsilon

**Mary McMillen Bartelsmeyer**,  
1940; February 1994  
**Helen Call Cord**, 1923;  
October 1993  
**Mary Baldwin Green**, 1952;  
June 1993

## Illinois Zeta

**Alice Branch Wilkins**, 1924;  
January 1994

## Illinois Eta

**Edna Henson Berryhill**, 1929;  
January 1994  
**Miriam Herron**, 1916;  
January 1994

## Indiana Alpha

**Mayme Campbell**, 1916;  
February 1994  
**Pauline Shutters Heine**, 1919;  
February 1994  
**Martha M. Newsom**, 1946;  
December 1993

## Indiana Beta

**Nancylee Foster Lyles**, 1945;  
July 1993  
**Margaret Culver Miller**, 1927;  
December 1993  
**Phyllis Simpson Roach**, 1943;  
August 1993

## Indiana Gamma

**Kathleen Hottel Perrin**, 1925;  
December 1993

## Indiana Delta

**Barbara De Pew**, 1938;  
February 1994  
**Edith Evans Carr Flaningam**,  
1922; January 1994  
**Mary Sherman Jessup**, 1966;  
January 1994  
**June Phelps Giles Lewis**, 1923;  
December 1993

## Iowa Alpha

**Violette Greene McIntyre**, 1925;  
June 1993  
**Suzanne Ward McQuilkin**, 1941;  
January 1994

## Iowa Beta

**Marilyn George Bishop**, 1942;  
January 1994  
**Frances Erickson Coffin**, 1923;  
November 1993  
**Mary M. Sprague**, 1927;  
October 1993

## Iowa Gamma

**Sarah Sawyer Triplett**, 1927;  
November 1993  
**Helen Budd Watts**, 1920;  
December 1993  
**Rosemary Welden Whiteley**,  
1933; January 1994  
**Helen Secor Woodruff**, 1919;  
December 1993

## Iowa Zeta

- Carolyn Wells Dauner**, 1945;  
March 1994  
**Marybel Tabor Frank**, 1926;  
January 1994  
**Virginia Mercer Gibbs**, 1928;  
January 1994  
**Nancy Walker Hubbard**, 1926;  
February 1994  
**Amalie Kraushaar Nelson**, 1922;  
November 1993

## Kansas Alpha

- Joy Webster Bondurant**, 1941;  
December 1993  
**Elizabeth Sifers Hollingbery**,  
1922; November 1993

## Louisiana Alpha

- Eleanor Ellis**, 1930;  
November 1993

## Maine Alpha

- Ruth Small Sewall**, 1920;  
November 1993

## Manitoba Alpha

- Muriel Richards Little**, 1938;  
November 1993

## Maryland Alpha

- Jane Bronk Councilor**, 1936;  
February 1994  
**Edythe Wilson Rice**, 1926;  
January 1994  
**Helen Wine Terrell**, 1941;  
January 1994

## Michigan Alpha

- Josephine Kerr**, 1923; October  
1993  
**Marilyn Woodford Martin**, 1940;  
October 1993  
**Elizabeth Owen**, 1939;  
October 1993

## Michigan Beta

- Isabelle Rayen Hall**, 1928;  
January 1994  
**Mary-Jane Cummings  
Morehouse**, 1933; January 1994  
**Elisabeth Devol Thomas**, 1927;  
August 1993

## Michigan Gamma

- Ann Welch Ryan**, 1951;  
December 1993

## Minnesota Alpha

- Louise Boos Colby**, 1928;  
January 1994  
**Margaret Ryan Morrison**, 1934;  
September 1993

## Mississippi Beta

- Sue E. Milner**, 1992;  
February 1994

## Missouri Alpha

- Charlotte Lukeman Owen**, 1942;  
May 1993

## Missouri Beta

- Mildred Petring Duncker**, 1919;  
December 1993  
**Margaret McElwee Hibbard**,  
1945; October 1993

## Missouri Gamma

- Florence Watson Raper**, 1918;  
December 1993

## Nebraska Beta

- Gertrude Cloidt Chovanec**, 1947;  
December 1993  
**Laurine Oetgen Kimmel**, 1921;  
April 1993  
**Mary Tidball Koch**, 1926;  
January 1994  
**Gari Hathaway Piper**, 1958;  
January 1994  
**Georgina Davis Truex**, 1911;  
January 1994

## Nevada Alpha

- Helen Traner Cooney**, 1935;  
January 1993

## New Mexico Alpha

- Vicki Brooks Branch**, 1957;  
December 1993

## New York Alpha

- Bernice Bohlmann**, 1921;  
November 1993  
**Elizabeth Swinton Meyers**, 1922;  
February 1994  
**Jean Emrey Scapellati**, 1939;  
September 1993

## New York Gamma

- Susan Hertzberg Bohrer**, 1960;  
May 1993

## North Carolina Alpha

- Raemond Wilson Craig**, 1932;  
March 1994

## North Carolina Beta

- Cecile Woodhouse DiPlacido**,  
1950 *Affiliated Colorado Alpha*;  
December 1993

## North Dakota Alpha

- Winifred Mulloy Bergquist**,  
1932; February 1994  
**Elizabeth Kelly Kilgore**, 1945;  
January 1994  
**Ruth Swanson McGuinness**, 1928;  
January 1994  
**Joanne Undlin Railing**, 1960;  
March 1993

## Ohio Alpha

- Adrienne Althar Boyd**, 1921;  
November 1993

## Ohio Beta

- Lee Harris Cryer**, 1946;  
February 1994  
**Lulu Browne Ohsner**, 1926;  
February 1994  
**Rosalynn Reichert Reinke**, 1961;  
November 1993

## Ohio Delta

- Marjorie Milligan Hazlett**, 1930;  
January 1994  
**Margaret Morrison Stoddard**,  
1941; February 1994  
**Alice Christopher Wentz**, 1930  
*Affiliated Ohio Beta*;  
November 1993

## Oklahoma Alpha

- Joan Aurin Ellis**, 1942;  
January 1994  
**Pauline Sill Lawrence**, 1931;  
September 1993  
**Doris Avery MacKinnon**, 1927;  
January 1994  
**Evelyn Riley Williams**, 1931;  
December 1993

## Oklahoma Beta

- Mary Jo Robinson Booker**, 1943;  
October 1993  
**Ruth Gray Wheeler**, 1919;  
December 1993

## Ontario Alpha

- Nora Gray Vaughan**, 1919;  
December 1993

## Oregon Beta

- Alice Freeland Johnson**, 1952;  
January 1994

## Pennsylvania Alpha

- Lydia Turner Bishop**, 1924;  
January 1994  
**Clara Seabury Boone**, 1931;  
October 1993  
**Martha Wood Christian**, 1928;  
January 1994  
**Margaret Marr Darch**, 1910;  
January 1994  
**Ruth Craighead Gawthrop**, 1913;  
February 1994  
**Anna R. Meloney**, 1924;  
December 1993  
**Dorothy Brown Rickards**, 1925;  
December 1993  
**Esther Wilson Widing**, 1925;  
February 1994

## Pennsylvania Beta

- Anna Dunlap Heim**, 1934;  
December 1993

## Pennsylvania Gamma

- Margaret Gress Tatnall**, 1923;  
January 1994

## Pennsylvania Delta

- Ruth Lefevre Titzel**, 1920;  
April 1993

## South Carolina Alpha

- Rita Belk Baker**, 1960;  
December 1993  
**Barbara Brown Bradford**, 1944;  
February 1994  
**Eirene Mayers Fishburne**, 1931;  
December 1993

## South Dakota Alpha

- Ruth E. Larson**, 1935;  
October 1993  
**Edith Clark Quintal**, 1927;  
September 1993

## Tennessee Alpha

- Mary C. Anderson**, 1953;  
March 1993  
**Ruth Elberfeld Overmyer**, 1929;  
February 1994

## Tennessee Beta

- Joyce Young Phelps**, 1954  
*Affiliated Kentucky Alpha*;  
December 1993  
**Nancy Johnson Pommerening**,  
1951; October 1993

## Texas Alpha

- Maria Taylor Gregory**, 1923;  
December 1993  
**Heloise Reid Hopson**, 1932  
*Affiliated Louisiana Alpha*;  
December 1993  
**Helen Getzendaner Read**, 1933;  
December 1993  
**Grace Hill Wade**, 1927; July 1993  
**Elizabeth Colgin Watson**, 1934;  
December 1993

## Texas Beta

- Minnie Wall Brown**, 1920;  
December 1993  
**Peggy McLarry Neary**, 1928;  
January 1994

## Texas Delta

- Mahala Ann Young**, 1972;  
December 1993

## Texas Eta

- Denna Lynn Brown**, 1990;  
December 1993

## Utah Alpha

- Mary Stephenson Fowler**, 1944;  
December 1993  
**Marjorie Lewis Hancock**, 1930;  
January 1993

## Vermont Beta

- Lucy Bracken Conkling**, 1928;  
December 1993  
**Grayce Darling Grant**, 1958;  
February 1994

## Virginia Beta

- Helen French Thompson**, 1924;  
February 1994

## Washington Alpha

- Margaret Church Edmunds**,  
1926; March 1994  
**Harriett Hancox Moses**, 1934;  
January 1994

## Washington Beta

- Rachel Davis Renn**, 1921;  
November 1993  
**Gladys Gue Wilfong**, 1923;  
January 1993

## Washington Gamma

- Frances Goehring Swayze**, 1948;  
January 1994

## Wisconsin Alpha

- Betty Hannum Orth Cant**, 1927;  
December 1993  
**Julia Grosvenor Goodnight**,  
1928; October 1993  
**Marion Bradley Kelly**, 1935;  
July 1993  
**Dorothy Chilton LaJoie**, 1944;  
January 1994  
**Mary Murdock Prinz**, 1932;  
August 1993  
**Elizabeth Reed**, 1992; July 1993  
**Virginia Swain Schulze**, 1946;  
March 1994

## Wisconsin Beta

- Peggy Hack Buckland**, 1928;  
April 1993  
**Jane Wilson Dubs**, 1941;  
December 1993  
**Martha Clark Lavelle**, 1933;  
February 1994

## Former Grand Presidents

- Sarahjane Paulson Vanasse**, Washington Beta, 3401 25th West #520, Seattle, WA 98199
- Elizabeth Turner Orr**, Oregon Alpha, 9450 SW Brentwood Place, Tigard, OR 97224
- Jean Wirths Scott**, Pennsylvania Beta, 1186 Cedarwood Drive, Moraga, CA 94556
- Carolyn Helman Lichtenberg**, Ohio Alpha, 1064 Westbrooke Way, Atlanta, GA 30319

## Officers Emeriti

- Grand President Emeritus** – Alice Weber Johnson, Missouri Beta, Box 337, Carmel Valley, CA 93924
- Grand Treasurer Emeritus** – Orpha O'Rourke Coenen, Indiana Delta, P.O. Box 8, Little Chute, WI 54140

## Grand Council

- Grand President** – Jo Ann Minor Roderick, Oklahoma Beta, 701 Greystone, Stillwater, OK 74074
- Grand Vice President of Collegians** – Beth van Maanen Beatty, Texas Gamma, 1506 San Sebastian Lane, Nassau Bay, TX 77058
- Grand Vice President of Alumnae** – Carolyn Pavletich Lesh, Texas Delta, #1 Forest Park, Richardson, TX 75080
- Grand Vice President of Finance** – Lou Ann Montgomery Carter, Oklahoma Alpha, Box 3925, 8 Barberry Lane, Wilmington, DE 19807
- Grand Vice President of Membership** – Carol Inge Warren, North Carolina Beta, 5439 Cascade Drive, Lisle, IL 60532
- Grand Vice President of Philanthropies** – Betty Blades Lofton, Indiana Gamma, 9060 Pickwick Drive, Indianapolis, IN 46260
- Grand Vice President of Program Development** – Sarah Ruth Mullis, South Carolina Alpha, 10 Kings Tavern Place, Atlanta, GA 30318

## Directors

- Director of Academic Standards** – Kathleen Anderson Witte, Nebraska Beta, 2011 Old Mill Road, Findlay, OH 45840
- Director of Alumnae Advisory Committees** – Carolyn Cromb Brada, Kansas Alpha, 52 Mission Road, Wichita, KS 67207
- Director of Alumnae Extension** – Mary Lu Pendergrast Meixell, Tennessee Delta, 150 East St. Andrews Drive, Mount Laurel, NJ 08054
- Director of Alumnae Programming** – Kay Cross Baker, Indiana Gamma, 185 Fogg Wood Road, Fairfield, CT 06430
- Director of Alumnae Records** – Emily Russell Tarr, Texas Beta, 1439 Sugar Creek Boulevard, Sugar Land, TX 77478
- Director of Chapter House Corporations** – Julie Geiger Shannon, Kentucky Beta, 29 Lenape Trail, Chatham, NJ 07928
- Director of Chapter Support, Region I** – Joanne MaGirl Arnold, Texas Beta, 32640 Spinnaker Drive, Avon Lake, OH 44012

- Director of Chapter Support, Region II** – Linda Burrows Priest, Oklahoma Beta, 203 East 11th Street, Pawhuska, OK 74056
- Director of Chapter Support, Region III** – Joan Scholes Hill, Kansas Alpha, 3772 Wonderland Hill, Boulder, CO 80304
- Director of Collegiate Extension** – Jane Landreth Russell, Arizona Alpha, 6244 East Berneil, Paradise Valley, AZ 85253
- Director of Finance** – Maurine Hager Jones, Montana Alpha, 4308 Oakridge Drive, Midland, MI 48640
- Director of Membership** – Kay Knittle Brock, Colorado Alpha, 5459 West 85th Terrace, Shawnee Mission, KS 66207
- Director of Pledge Development** – Ruth Neel Noble, California Delta, 2564 Via Carrillo, Palos Verdes Estates, CA 90274
- Director of Rush** – Melissa Dates Schmidt, Ohio Alpha, 1413 Kingstream Drive, Herndon, VA 22070
- Director of Undergraduate Programming** – Fran DeSimone Becque, New York Alpha, 2608 Kent Drive, Carbondale, IL 62901

## Appointed International Officers

- National Panhellenic Conference Delegate** – Jean Wirths Scott, Pennsylvania Beta, 1186 Cedarwood Drive, Moraga, CA 94556
- Editor of The ARROW** – Jennifer Moeller Barcus, Missouri Alpha, Pi Beta Phi Central Office, 7730 Carondelet, Suite 333, St. Louis, MO 63105
- Fraternity Historian** – Marilyn Simpson Ford, Nebraska Beta, 268 Underwood Drive NW, Atlanta, GA 30328
- Supervisor of Chapter Histories** – Penny Heyl Moss, Kansas Beta, 14024 Pinnacle Drive, Wichita, KS 67230
- Convention Coordinator** – Barbara Ehni Van Luven, Indiana Epsilon, 2 Portland Court, St. Louis, MO 63108
- Convention Site Coordinator** – Nancy Trogman, Illinois Theta, 2363 Larkin St., #32, San Francisco, CA 94109
- Elections Coordinator** – Sara Shipley Bowers, North Carolina Alpha, P.O. Box 11731, Fort Smith, AR 72917
- Fraternity Archivist** – Annette Mitchell Mills, Alabama Alpha, 2128 Vestridge Drive, Birmingham, AL 35216
- Parliamentarian** – Janice Shrader Falk, Nebraska Beta, R.R. 1, Box 10, Fort Calhoun, NE 68023
- Graduate Consultant Coordinator** – Shannon Strain Schultheis, Oklahoma Beta, 1526 Shalamar, Stillwater, OK 74074
- Supervisor of Province Coordinators** – Patricia Friend Cooke, Idaho Alpha, 23832 140th Lane SE, Kent, WA 98042
- Convention Boutique Chairman** – Lisa Roth French, Louisiana Beta, 5022 Prytania, New Orleans, LA 70115
- Directions Program Chairman** – Lisa Gamel Scott, Colorado Alpha, 5200 Aspen Drive, Littleton, CO 80123

## Special Officers

- Traveling Graduate Consultants** – Jennifer Fenney, Washington Beta; Brooke Helmers, Ohio Zeta; Leanne McManus, Florida Delta; Kerry O'Keefe, Oklahoma Beta; Angela Van Buren, Iowa Beta
- Resident Graduate Consultants** – Erika Anderson, Iowa Gamma; Lara Swanson, Illinois Zeta

## Pi Beta Phi Central Office

7730 Carondelet, Suite 333, St. Louis, MO 63105, 314/727-7338; FAX: 314/727-8049

- Executive Director** – Virginia Bland Fry, TN Beta
- Controller** – Mary Mitch Mullendore, IL Zeta
- Communications Coordinator** – Jennifer Moeller Barcus, MO Alpha

## Fraternity Insurance Representatives

- Property and Liability Insurance** – Corbin-Gillespie Agency, P.O. Box 1910, Carmel, IN 46032
- Group Hospital Indemnity Plan Insurance** – Insurance Administrators Co., 216 N. 11th St., Lincoln, NE 68508

## Board of Trustee Funds

- Chairman** – Lou Ann Montgomery Carter, Box 3925, 8 Barberry Lane, Wilmington, DE 19807

## Arrowmont

- Arrowmont School of Arts and Crafts** – Box 567, Gatlinburg, TN 37738 615/436-4411
- Director, Arrowmont School of Arts and Crafts** – Sandra Blain
- Pi Beta Phi Settlement School Board of Governors Chairman** – Charlotte Ann Eckel Edwards, 1151 Gateway Lane, Nashville, TN 37220

## Holt House

- 402 East 1st Avenue, Monmouth, IL 61462
- Hostess** – Margaret Bowker Cooper
- Hours:** 1:00 to 5:00 P.M. weekdays. By appointment Saturdays, Sundays and holidays.

## Pi Beta Phi Foundation

- Office** – 7730 Carondelet, Suite 333, St. Louis, MO 63105 314/727-7338; FAX: 314/727-1255
- President** – Ann Dudgeon Phy, 4408 Lorraine, Dallas, TX 75205
- Director** – Lynn M. Raney, Pi Beta Phi Foundation, 7730 Carondelet, Suite 333, St. Louis, MO 63105



## Pi Beta Phi Foundation Committees

**Alumnae Committee for Continuing Education Chairman** – Linda Hooper Wassberg, 6101 Howe Drive, Fairway, KS 66205

**Capital Campaign Committee Chairman** – Jean Wirths Scott, 1186 Cedarwood Drive, Moraga, CA 94556

**Fellowship Committee Chairman** – Patti Allison Gervy, 116 Hartsdale Avenue, White Plains, NY 10606

**Scholarship Committee Chairman** – Jeannine Van Wagenen Funk, 3120 Santa Ana Drive, Reno, NV 89502

## Standing Committees

**Budget and Finance Committee Chairman** – Lou Ann Montgomery Carter, Box 3925, 8 Barberry Lane, Wilmington, DE 19807

**Canadian Philanthropies Committee Chairman** – Jacqueline Stothers, 606 Avenue Road #402, Toronto, Ontario M4V 2K3, CANADA

**Carolyn Helman Lichtenberg Crest Award Committee Chairman** – Carolyn Pavletich Lesh, #1 Forest Park, Richardson, TX 75080

**Convention Committee Chairman** – Denise Millett Moore, c/o Prudential California, 72-757 Fred Waring Drive, Palm Desert, CA 92260

**Emma Harper Turner Memorial Fund Committee Chairman** – Anne Busch Hills, 440 Meadowview Drive, La Canada, CA 91011

**Holt House Committee Chairman** – Elizabeth Davenport Garrels, R.R. #1, Mt. Pleasant, IA 52641

**House Director Committee Chairman** – Julie Geiger Shannon, 29 Lenape Trail, Chatham, NJ 07928  
**Legislative Committee Chairman** – Lisa Masters, P.O. Box 214, Fayetteville, GA 30214

**Links to Literacy Committee Chairman** – Jean Egmon, 420 Linden #303, Wilmette, IL 60091

**Student Loans Committee Chairman** – Margaret Liebers Lovelette, 2038 Butternut Lane, Northbrook, IL 60062

**Music Committee Chairman** – Mary Swanson Engle, 54 Spring Green Circle, Four Seasons, MO 65049

**Music Committee Collegiate Chairman** – Suzanne Chapman Lawson, 44 Rockinghorse Road, Rancho Palos Verdes, CA 90274

**Nominating Committee Chairman** – Jane Houchens Tuten, 10561 Adventure Lane, Cincinnati, OH 45242

## PI BETA PHI FOUNDATION MEMORIAL AND RECOGNITION GIFTS

Enclosed is my/our gift of \$ \_\_\_\_\_

Name of donor or club: \_\_\_\_\_

In memory of: \_\_\_\_\_  
 Chapter/year of initiation \_\_\_\_\_  
 who died on: \_\_\_\_\_

If club, President's name: \_\_\_\_\_

In recognition of: \_\_\_\_\_  
 Chapter/year of initiation \_\_\_\_\_

Street address: \_\_\_\_\_

City/State/Zip: \_\_\_\_\_

Send acknowledgement to: \_\_\_\_\_

*Please make check payable to the Pi Beta Phi Foundation.  
 All gifts to the Foundation are tax-deductible to the full extent of  
 the law.*

Street address: \_\_\_\_\_

City/State/Zip: \_\_\_\_\_

Mail this form with your gift to: **Pi Beta Phi Foundation,**  
 7730 Carondelet, Suite 333  
 St. Louis, MO 63105



# It's Here! The Pi Beta Phi VISA Gold Card!

Pride and support go hand in hand with Pi Phis. Our new Visa Gold Card represents an opportunity to support the Fraternity while getting great gold card benefits for yourself. Each time you use this card to make a purchase, First Tennessee Bank will make a contribution to the Fraternity at no additional cost to you or to Pi Beta Phi! The Fraternity receives financial support and you receive:

- A higher line of credit - starting at \$5,000!
- A lower Annual Percentage Rate - only 12.9%!
- All of the exceptional features of a full-service Visa Gold Card including:
  - Full Auto Rental Collision/Loss Damage Waiver Insurance
  - \$400,000 Travel Accident Insurance
  - Automatic Purchase Protection

Go for the gold. Support Pi Beta Phi while enjoying all the benefits of an outstanding Gold Card.

## Apply Today!



Please note, your gross income should be at least \$35,000 annually to be considered for this account.

New Applicant  Request for upgrade from existing First Tennessee account,

Account # \_\_\_\_\_

Send completed application to: Credit Card Service Center, P.O. Box 1545, Memphis, TN 38101-9986.

### Applicant Information

Applicant's Name			
Street Address			
City		State	Zip Code
Home Phone Number ( )		Social Security Number	
Employer		<input type="checkbox"/> Self-Employed †	Position
Years There			
Monthly Housing Payment \$	Monthly Salary \$	Additional Income* \$	Additional Income Source
		<input type="checkbox"/> MONTHLY <input type="checkbox"/> ANNUALLY	
Business Phone ( )		Years Employed at Previous Employer	Date of Birth
*Alimony, child support, or separate maintenance income need not be revealed if you do not wish it considered as a basis of repayment.			
Previous Address		Years There	
Residence Information <input type="checkbox"/> RENT <input type="checkbox"/> OWN <input type="checkbox"/> LIVE WITH RELATIVES		Your Bank <input type="checkbox"/> CHECKING <input type="checkbox"/> SAVINGS	
Name of Nearest Relative Not Living With You		Relationship	
Relative's Address (Street)			
City/State/Zip		Phone ( )	

### Co-Applicant Information

**This section should be completed if you are applying for a joint account or relying on another person's income**

Co-Applicant's Name			
Social Security Number		Date of Birth	Business Phone ( )
*Alimony, child support, or separate maintenance income need not be revealed if you do not wish it considered as a basis of repayment			Annual Income* \$
Employer		Years Employed	Position
		<input type="checkbox"/> Self-Employed †	
<b>FOR BANK USE ONLY</b>	BANK <b>6016</b>	EMP <b>5800</b>	ID
	APP SC	FINSC	BRSC
AC	CD	LIMIT	APP BY
			DATE

### Signatures

**If you completed the co-applicant section, both applicant and co-applicant must sign.**

† If self-employed or retired, please attach the most recent 2 years signed income tax returns or other proof of income.

I authorize you to obtain information to check my credit records and statements made in this application. I agree to be bound by the terms and conditions stated on the cardholder agreement that will accompany my card. I have answered the questions in this application fully and truthfully. If this is an application for a joint account, I understand that each person who signs will be liable for the full amount of all charges.

If I do not qualify for the minimum credit line required for the Gold Card, please treat this as an application for a classic card account with the credit line for which I qualify.

Applicant's Signature	Date
<b>X</b>	
Co-Applicant's Signature	Date
<b>X</b>	

### Credit Card Disclosures

Annual Percentage Rate for purchases	Gold 12.9%	Classic 13.9%
Variable Rate Information	Your Annual Percentage Rate may vary. The rate is determined by the Prime Rate + 6.9% for Gold; Prime Rate + 7.9% for Classic. Prime Rate means the "Prime Rate" published in the Money Rates section of <i>The Wall Street Journal</i> on the last business day before the beginning of the billing cycle.	
Grace period for repayment of balances for purchases	You have 25 days on average to repay your entire balance before a finance charge on purchases will be imposed.	
Method of computing the balance for purchases	Average daily balance (including new purchases)	
Annual fees	Gold: Waived year one, thereafter: \$35; Classic: None Each additional card beyond two: Gold: \$5 per year. Classic: No fee	
Minimum finance charge	\$ .50 (in any month a finance charge is assessed)	
Transaction fee for cash advances, and fees for paying late or exceeding the credit limit	Transaction fee for cash advances: None Late payment fee: Gold \$12.50, Classic \$15.00 Over-the-limit fee: Gold \$10.00, Classic \$12.50	

The information about the cost of the card is accurate as of this printing (3/94) and is subject to change after that date. For current rates and terms, please write Credit Card Service Center, P.O. Box 1545, Memphis, Tennessee 38101-1545.



Dear Members of Pi Beta Phi,

The Pi Beta Phi ARROWCRAFT SHOP was established to provide an outlet for regional craftsmen and, through its profit, to be a source of income for Settlement School/Arrowmont.

Proliferation of other craft shops has abrogated its original, unique purpose and for many years the shop has been unable to achieve profitability. In spite of restructuring and drastic cost cutting, cooperation by the Shop staff, diligent efforts by the Arrowcraft Board and support through Arrowcraft sales by alumnae clubs and chapters, the Arrowcraft Shop is unable to function without a continuing infusion of capital from the Fraternity.

In order for the Arrowcraft Shop to be able to continue operations as a quality shop providing a market for regional craftsmen, Grand Council and the Board of Directors of Arrowcraft, Inc. are pleased to announce the opportunity to be associated with the Southern Highland Handicraft Guild serving the craftsmen of the southern Appalachian Mountains. The Guild will lease the Arrowcraft Shop property from the Fraternity, and beginning June 1 it will operate as "ARROWCRAFT, a Shop of the Southern Highland Handicraft Guild." The Guild, a non-profit educational corporation, is one of the oldest and most respected craft guilds in the country. It operates three very successful retail shops in North Carolina. The Arrowcraft Shop will be the fourth and will open a new market in Tennessee. Merchandise will include "one of a kind," as well as production pieces. Many of the artists we represented will participate in the Guild's shop.

Grand Council and the Arrowcraft Board are delighted to see the Arrowcraft name continued through the association with the prestigious Southern Highland Handicraft Guild. Alumnae clubs and chapters will no longer hold Arrowcraft sales since the Fraternity will not be operating the shop. The Arrowmont School of Arts and Crafts is enjoying tremendous success and will continue to be our philanthropic focus. Both Arrowmont and the Fraternity will benefit from the association with the Southern Highland Handicraft Guild, and the Arrowcraft Shop will be able to continue the original mission of providing a market for regional craftsmen.

Your efforts to help the shop, and your support, especially in the past few years, have been most gratifying and our heartfelt thanks go to all of you. Alumnae clubs, chapters and Pi Phis everywhere can remember with great satisfaction 68 years of proud heritage of the Arrowcraft Shop and the part they have played in its history.

Jo Ann Roderick  
Grand President, Pi Beta Phi

Lucy Baker Warner  
President, Arrowcraft, Inc.



Angela Van Buren



Jennifer Fenney



Lara Swanson



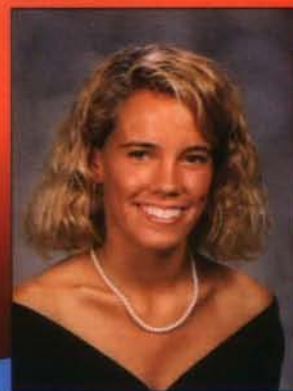
Erika Anderson



Kerry O'Keefe



Leanne McManes



Brooke Helmers

# Nurturing Pi Beta Phi's Chapters

**S**even outstanding young women will spend the next academic year employed by the Fraternity as graduate consultants. Traveling Graduate Consultants Jennifer Feeney, Brooke Helmers, Leanne McManus, Kerry O'Keefe and Angela Van Buren will travel from chapter to chapter across the continent assisting chapters in areas such as membership recruitment, programming and leadership training. Erika Anderson and Lara Swanson, Resident Graduate Consultants, will be based with the Fraternity's two newest chapters, helping them establish a strong foundation on which they can build.

**JENNIFER FEENEY**

Named Outstanding Greek Woman on Campus, Jennifer is a member of Golden Key, Mortar Board and Order of Omega honoraries. A graduate of Washington State University, this Washington Beta served her chapter as Vice President of Mental Advancement. In addition, Jennifer was elected to WSU's Panhellenic Executive Council as Rush Coordinator organizing the 14 sororities on campus. The Associated Students of WSU also benefited from Jennifer's leadership skills as she served as administrative assistant, senator and on various committees for the organization.

**KERRY O'KEEFE**

This Oklahoma Beta received a bachelor of arts degree in journalism from Oklahoma State University and plans to pursue a career in sports public relations. Kerry was selected as model pledge at Oklahoma Beta and went on to serve her chapter as Assistant Pledge Educator, Rush Chairman and Vice President of Social Advancement. Founder of "New Friends" mentor program for elementary school children, Kerry enjoyed such campus activities as Greek ambassador, Mortar Board, Public Relations Student Society of America and athletic department intern.

**BROOKE HELMERS**

Prior to graduating from Miami University of Ohio and majoring in speech and language pathology, Brooke enjoyed activities within Ohio Zeta and on the campus. After serving on the chapter's standards board for two years, Brooke was elected Vice President of Moral Advancement. She was a member of Order of Omega and the National Student Speech Language and Hearing Association. An avid horseback rider, Brooke was a member of Miami University's Equestrian Team.

**LARA SWANSON**

A graduate of the University of Illinois, Lara will spend the 1994-1995 academic year as the Resident Graduate Consultant for Pi Phi's new chapter at Wake Forest University. While serving as Illinois Zeta's Chapter President, Lara was selected as one of four Panhellenic Presidents to lead the University of Illinois Presidents' Retreat. As Vice President of Moral Advancement, Lara organized the fraternity heritage program which was awarded the Frances Rosser Brown Award for Best Fraternity Heritage Programming at Pi Beta Phi's 51st Biennial Convention.

**ERIKA ANDERSON**

Erika began her collegiate career at the University of St. Thomas in St. Paul, Minnesota where she was a member of the women's varsity soccer team. In 1991, she transferred to Iowa State University where she pledged Pi Beta Phi. A former Chapter President for Iowa Gamma, Erika helped lead the chapter to win the Presidential Award for Fraternal Excellence. Erika was a staff writer for the Iowa State Daily Newspaper and served on VEISHEA Executive Board. A Minnesota all-state student journalist, Erika graduated with a degree in journalism and will spend the '94-'95 academic year as resident graduate consultant at Creighton University.

**LEANNE MCMANUS**

A former Chapter President and Vice President of Social Advancement, Florida Delta Leanne was a Harriet Rutherford Johnstone Scholarship winner in 1992-93 and 1993-1994. Leanne gave her time and talents to the University of Florida Panhellenic by serving as Fraternal Excellence Revision Chair revamping the Panhellenic point system and as a Panhellenic Judicial Hearing Board member. In addition, Leanne was Director of Camp UF, organizing a weekend orientation for incoming freshman. Leanne graduated from the University of Florida with a bachelor of science degree in political science.

**ANGELA VAN BUREN**

After a year of traveling for Pi Phi, Angela plans to work on a master's degree in international management. She graduated from Simpson College with a bachelor of arts degree. A former Chapter Treasurer, Angela served her chapter in numerous offices as well as alternate delegate to the 1993 Orlando Convention. A member of Omicron Delta Kappa, Angela enjoyed her involvement on campus co-chairing Simpson's Parent's Day, Greek Week and serving as chairman of SNAP (Simpson National Annual Phon-a-thon).

Pi Phi

**EXPRESS**

SM

Items may be ordered from previous Pi Phi Express ads, depending on availability.

**STERLING SILVER JEWELRY**

**A. Puffed traditional angel pendant.** Also makes great ornament. J101 \$32.00

**B. Southwest quartz watch** with sterling silver angel and arrow charms. J124 \$79.00

**C. Southwestern style arrow pin.** J106 \$15.00

**D. Zig zag arrow pin.** J120 \$13.00

**E. Dian Malouf's stackable arrow life ring.** Sizes 5,6,7. J118 \$58.00

**F. Pi Beta Phi pin with arrow.** J135 \$16.00

**G. Pi Beta Phi lavalier.** J127 \$6.00

**H. Arrow charm.** J130 \$6.00

**I. Arrow hoop earrings.** J126 \$16.00

**J. Pi Beta Phi dangle ring.** Sizes 5,6,7. J107 \$11.00

**K. Pi Beta Phi lavalier bracelet.** J135 \$26.00

**L. Charm bracelet** with angel and arrow charms. J114 \$40.00



**PI PHI EXPRESS**  
7730 Carondelet, Suite 333  
St. Louis, MO 63105

Telephone orders 1-800-322-1867  
8:30- 4:30 Central Standard Time  
Monday-Friday

NAME				
ADDRESS				
CITY/STATE				
DAYTIME PHONE				
SIGNATURE				
VISA <input type="checkbox"/> MC <input type="checkbox"/> #		Exp. Date		
Qty	Description of Item	Color	Cost/Each	Total
SHIPPING RATES: (All orders shipped UPS unless otherwise specified.) \$25.00 and under= \$4.00; \$25.01 - \$50.00= \$5.00; \$50.01 - \$100.00= \$6.50; Over \$100.00= \$8.00. Allow 2-3 weeks for delivery unless otherwise specified. Shipments over 40 lbs., actual freight charged.		Merchandise Total		
		MO Residents Add 5.975% Tax		
		Shipping (See chart)		
		TOTAL AMOUNT		



**M. Pi Phi pewter angel pendant or ornament.** J138 \$8.00  
**N. Faith, hope and charity pewter angel necklace.** J137 \$49.00

**O. 1994 Collector Series Historic Ornament** - first in a series of limited edition collectable ornaments. The 1994 ornament is a replica of the seal that has been used on initiation certificates for decades. Attractively gift boxed. N223 \$12.00



**P. Raspberry T-shirt** with embroidered tone-on-tone raspberry Pi Beta Phi. L, XL. T166 \$20.00  
**Q. Oversized T-shirt** with plaid Pi Beta Phi. M, L. T184 \$26.00  
**R. Oversized laundered cotton pullover** with plaid Pi Beta Phi. M, L. SW162 \$44.00  
**S. Denim baseball hat** with white embroidered Pi Beta Phi. N197 \$16.00  
**T. Navy T-shirt** with floral Pi Beta Phi embroidered in fuchsia. L, XL. T182 \$20.00

# Announcements

## Chapter Anniversaries

**California Eta** at the University of California, Irvine will celebrate its 20th anniversary August 6-7, 1994. Members are encouraged to attend, catch up with old friends and see the new chapter house. If you have not received any information in the mail, please contact:

Toni Martinovich  
1623 Sunnyside Terrace  
San Pedro, CA 90732  
310/833-8633

**Nebraska Beta** at the University of Nebraska will celebrate its 100th anniversary over a fun-filled weekend April 7-9, 1995. If you have not received any information, have recently moved or may be "lost," please contact:

Nebraska Beta  
Centennial Committee  
c/o Suzanne Owen  
801 South 34 Street  
Lincoln, NE 68510-3408

**Pennsylvania Beta** will host a Centennial Celebration at Bucknell University on April 28-30, 1995. Watch for more details about the commemorative weekend.

## Financial Assistance Available

The Foundation awarded 49 scholarships for the 1994-95 academic year. If you wish to apply for a scholarship for the 1995-96 academic year, it is important to obtain the new scholarship applications and required financial disclosure forms. These materials will be available in the fall mailing to chapters and alumnae clubs or may be requested from the Foundation Office by calling 314/727-7338. Scholarship applications and accompanying materials must be postmarked no later than January 15, 1995 to be considered.

## Financial Excellence

The following collegiate chapters have maintained outstanding financial cooperation for the 1993-94 academic year. The Chapter Treasurers of these chapters are eligible for the Olivia Smith Moore Award for the Chapter Treasurer who has best fulfilled the requirements of her office.

**Arkansas Alpha**  
**Florida Alpha**  
**Illinois Alpha**  
**Illinois Epsilon**  
**Illinois Eta**  
**Iowa Beta**  
**Louisiana Beta**  
**Missouri Gamma**  
**Nevada Alpha**  
**Oregon Gamma**  
**Pennsylvania Beta**  
**South Dakota Alpha**  
**Texas Delta**  
**Texas Eta**  
**Virginia Eta**

## Opportunity for Pi Phis in D.C.

The Washington D.C. Alumnae Club offers a unique opportunity of sisterhood for members who intern or do summer associateships in the nation's capital.

"Those of us who forge a life here remember how important the signs of the life we left behind can be. A smile always comes to my face when I see our letters on the back of a car with license plates from far away states, knowing in my heart another Pi Phi is working on the Hill or gaining valuable experience in a law firm for the summer. I would like to meet these women, in hopes that if they decide to begin their careers here, they will become members of the alumnae club, and find the satisfaction of continuing actively in Pi Phi long after their collegiate days are done."

Gabrielle Redfern  
Washington D.C. Alumnae Club  
8301 Haddon Drive  
Takoma Park, MD 20912  
301/585-4459

## Pi Beta Phi's Health Plans

### Plan I

Hospital Indemnity— Pays a specific amount each day you are in the hospital with an extra amount in case of cancer or intensive care. The plan is underwritten by American Centurion (a subsidiary of American Express) and administered by Insurance Administrators Co.

### Plan II

Long Term Care— Pays a specific amount each day you are in a care facility such as convalescent home, a skilled, intermediate, or custodial care facility. The plan is underwritten by AMEX Life Insurance Company (a subsidiary of American Express) and administered by Insurance Administrators Co.

### For full details, write directly or call:

Insurance Administrators Co.  
216 North 11 Street  
Lincoln, NE 68508  
(402)475-6251

*Insurance Administrators Co. has administered our plans for 22 years. With several thousand of our members having benefited from coverage under these plans, we are pleased to be able to provide this extra service.*

*The Grand Council of Pi Beta Phi*

## Pi Phi On Line

Wanted — Pi Phis who are subscribers to the PRODIGY Network. To keep you better informed, Pi Beta Phi has begun an on-line newsletter. To sign up, contact Emily Tarr, Director of Alumnae Records, PRODIGY #CSXC27A. Click on PRODIGY "New Mail" to keep up to date with Pi Phi.

HAVE YOU MOVED OR CHANGED YOUR NAME?

\_\_\_\_\_  
Maiden Name

\_\_\_\_\_  
New Name (title/last/first/middle)

\_\_\_\_\_  
New Address

\_\_\_\_\_  
City/State/Zip

\_\_\_\_\_  
Phone Number

\_\_\_\_\_  
Chapter and Year of Initiation

\_\_\_\_\_  
If you are an officer in the Fraternity, please give title so  
that we may update officer lists.

Clip this form, place in a stamped  
envelope and send to:  
Pi Beta Phi Central Office  
7730 Carondelet, Suite 333  
St. Louis, MO 63105

**Postmaster:** Send notice of  
undeliverable copies to:  
Pi Beta Phi Central Office,  
7730 Carondelet, Suite 333,  
St. Louis, MO 63105