

# *The Arrow*



**IT'S HOW YOU**

**WRITE POST  
TWEET ACT  
DRESS ACT  
SPEAK**

**THAT REPRESENTS PI PHI**



Friends & Leaders for Life

PI BETA PHI FRATERNITY

ΠΒΦ

Founded 1867

FOUNDERS

Emma Brownlee Kilgore  
Margaret Campbell  
Libbie Brook Gaddis  
Ada Bruen Grier

Clara Brownlee Hutchinson  
Fannie Whitenack Libbey

Rosa Moore  
Jennie Nicol, M.D.

Inez Smith Soule  
Fannie Thomson

Jennie Horne Turnbull  
Nancy Black Wallace

MISSION STATEMENT

The mission of Pi Beta Phi Fraternity for Women is to promote friendship, develop women of intellect and integrity, cultivate leadership potential and enrich lives through community service.

VISION STATEMENT

Pi Beta Phi Fraternity is committed to being recognized as a premier organization for women by providing lifelong enrichment to its members and contributing to the betterment of society.

CORE VALUES

Integrity  
Honor and Respect  
Lifelong Commitment  
Personal and Intellectual Growth  
Philanthropic Service to Others  
Sincere Friendship

*The* OF PI BETA PHI  
*Arrow*



Features

- 4 You Represent the Pi Beta Phi Brand
- 10 Meet the 2012 Carolyn Helman Lichtenberg Crest Award Winners
- 15 A Note of Gratitude from a Delta Gamma Mother
- 28 Don't Miss Out — Registration for the 2013 Convention is Still Open
- 33 Pi Phis to Lobby on Capitol Hill this April

Follow us online:



Facebook®  
[www.facebook.com/pibetaphi](http://www.facebook.com/pibetaphi)



Pinterest®  
[www.pinterest.com/pibetaphi](http://www.pinterest.com/pibetaphi)



LinkedIn®  
[www.linkedin.com](http://www.linkedin.com)



Twitter®  
[www.twitter.com/pibetaphihq](http://www.twitter.com/pibetaphihq)



Pi Beta Phi Blog  
[www.piphiblog.org](http://www.piphiblog.org)



YouTube®  
[www.youtube.com/pibetaphihq](http://www.youtube.com/pibetaphihq)

*The Arrow of Pi Beta Phi* is published by Pi Beta Phi Fraternity, 1154 Town & Country Commons Drive, Town & Country, Missouri 63017. POSTMASTER: Send address changes to *The Arrow of Pi Beta Phi*, 1154 Town & Country Commons Drive, Town & Country, Missouri 63017.



View  
*The Arrow*<sup>®</sup>  
 online at  
[www.pibetaphi.org](http://www.pibetaphi.org)

**ARROW EDITOR**

Constance Dillon  
 editor@pibetaphi.org

**MARKETING & COMMUNICATIONS  
 DIRECTOR, HEADQUARTERS**

Eily Cummings

**CREATIVE DIRECTOR**

Tim Steele

**EDITORIAL STAFF**

Jennifer Whittom Schmidt  
 Janelle Schroeder  
 Katie Jackson

**GRAND COUNCIL**

Mary Loy Tatum  
 Grand President

Cara Ballard Sutcliffe  
 Grand Vice President Collegians

Cindy Rice Svec  
 Grand Vice President Alumnae

Diane Bielman  
 Grand Vice President Communications

Rae Wohlhueter Maier  
 Grand Vice President Finance

Paula Pace Shepherd  
 Grand Vice President Membership

Julie Carney  
 Grand Vice President Programming

# Departments

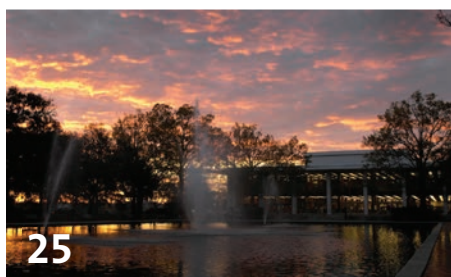
- 2 Perspective
- 3 From our Readers
- 16 Literacy
- 18 Campus Living
- 20 Collegiate News
- 24 In Her Words
- 25 Extension
- 30 Foundation
- 32 Pi Phi Pens
- 34 Alumnae News
- 38 Remember
- 39 Volunteers
- 40 Holt House
- 42 Reunions & Anniversaries
- 44 In Memoriam
- 46 Pi Phi Express<sup>®</sup>
- 48 News & Notes



16



18



25



42



ON THE COVER: As a member of Pi Beta Phi, everything you do or say is representative of the Fraternity and conveys an image of who we are as an organization. Learn how your positive words and actions help protect Pi Beta Phi, and our brand, beginning on Page 4. Pictured from left, Ohio Lambda NANCY HORN PITTS and her daughter, Ohio Lambda JULIA PITTS.



Member Fraternity Communications Association

**PI BETA PHI HEADQUARTERS**  
 1154 Town & Country Commons Drive  
 Town & Country, Missouri 63017  
 (636) 256-0680 • FAX (636) 256-8095  
[headquarters@pibetaphi.org](mailto:headquarters@pibetaphi.org)  
[www.pibetaphi.org](http://www.pibetaphi.org)

## What Do I Think of When I Think of Pi Phi?

A coworker recently asked me what I was doing for my few days of vacation. I could have said, “I’m going to a sorority meeting,” but instead I asked him about his volunteer experience. I then explained how I serve on the Board for a women’s fraternal organization that provides literacy service to its communities and empowers women to be strong leaders. I also said the organization is comprised of women with whom I have deep, meaningful relationships, which have influenced the woman I am today.



**DIANE BIELMAN**  
Grand Vice President Communications  
California Eta  
University of California, Irvine

How would you describe the Fraternity to a coworker, family member or friend? The most effective way to communicate who you are as a Pi Phi and what is meaningful to you is through an elevator speech. You know, that concise speech you give to grab someone’s attention that “packs punch” and makes a connection. Never heard of one? Well now you have, because I just gave you my elevator speech.

Creating your own elevator speech is easy! Start with a short but intriguing statement, establish common ground with the other person, give a summary of what you do and how it relates to you both and then give a call to action or make a statement persuading the person to act.

Unfortunately, many non-Greeks have a misconception of what fraternity and sorority life is about. We, as members, have a very different perception of fraternity and sorority life, and it is our responsibility to share the benefits. For example, while volunteering for the Fraternity, I have mentored collegiate and alumnae women and helped them become better leaders. Pi Phi has also strengthened my communication, training and development skills I use in my career as a human resources professional.

Because of these experiences, I use every conversation I have about Pi Phi as an opportunity to share the great work our Fraternity does, and at the same time, try to influence another’s perception of Greek organizations. When I introduce myself, and my Pi Phi experiences, I not only communicate who I am as an individual, but also who we are as an organization. How I portray Pi Phi — and how you portray Pi Phi — paints an image of all of us. We are all representatives of the Pi Phi brand and the fraternal experience.

So the next time you meet a new person, how will you explain your Pi Phi experiences? How will you describe the women who are there to celebrate a graduation or a child’s wedding, or who are there during times of challenge like a job loss or the illness of a family member? I encourage you to celebrate our sisterhood and seize the opportunity to positively influence how others see Pi Beta Phi and its brand.

In Pi Phi,

A handwritten signature in black ink that reads "Diane". The signature is written in a cursive, flowing style.

Diane Bielman

# From our Readers

## We Are Not Alone When Pi Phi Sisters are Near

The first time I was a mentor for someone else was when I got my Pi Phi little sis. Let me tell you, she's the most amazing person I have ever met. At the time, she was still feeling her way forward in the world and part of my role, as her big sis, was to always be there — no matter what. Though we've both graduated and moved on with our lives, our relationship hasn't changed.

As an expatriate living in England, I have felt at times a bit isolated from Pi Phi, given this is a country that gets most of its ideas about fraternities and sororities from Hollywood — and we all know how inaccurate those representations are. Explaining your sorority membership to a Brit can be hard. So this year, I reached out to the London Pocket to reconnect with Pi Phi and meet new sisters.

Since joining the London Pocket, I've become involved with "Big Sisters in Britain," which links expatriate Pi Phis just coming over to the United Kingdom with Pi Phis who have been here for awhile. It's a truly wonderful mentoring program allowing more veteran expats, like me, to share the experience of being alone in a foreign country, and maybe be able to offer some advice about living abroad, to other Pi Phis.

I've been connected to two women so far and though I live two hours from London, we have exchanged many emails and chatted via Skype. We all have different personalities and are in England for different reasons, but we share the same sisterhood. The most valuable thing to come from our relationships is that I have grown right along with my mentees. Being a part of Pi Phi and having this opportunity to mentor reminds me I am not alone when there are Pi Phi sisters near.

MAKENZI CROUCH

Illinois Beta-Delta — Nottingham, England



***Pi Phis share stories and sisterhood every day on Twitter. See what they're talking about ...***

@ValpoGreekLife: The @ValpoPiPhi alumnae from 2002–2010 are highlighted in the most recent edition of the @PiBetaPhiHQ Arrow Magazine!!

@jcarlinc: Got my @PiBetaPhiHQ Arrow in the mail today AND my chapter is in it! #perfecttiming

@amycmilller: Happy national badge day to all my sisters out there. So blessed to be a Pi Phi Angel!  
@MSAlphaPiPhi @PiBetaPhiHQ

@PaigeWilson\_: Looking at all the #PiPhi things on #pinterest is making me crazy excited for CONVENTION 2013! @PiBetaPhiHQ

@ButlerPiPhi: Fraternity Day of Service and Initiation?! It's too good to be true! We love literacy, our newest sisters & @PiBetaPhiHQ! #piphilove

@ItsCasual\_: #MentionSomeoneYoureThankfulFor I'm thankful for my @PiBetaPhiHQ sisters all over the world. #wewearthearrow #pplam #ringching

@Abb\_E\_Mack: AFLV has been one of the best experiences as a member of the Greek community! Oh and I just met Fran Becque, so cool @AFLV @PiBetaPhiHQ

@taylor\_ppl: 100th year at Stetson University, so proud to be a FL Alpha @PiBetaPhiHQ @StetsonGreeks #PiBetaPhi #100Years



*We look forward to hearing from you. Email comments to the Editor at [editor@pibetaphi.org](mailto:editor@pibetaphi.org) or mail them to Pi Beta Phi Headquarters, 1154 Town & Country Commons Drive, Town & Country, Missouri 63017.*

YOU REPRESENT THE



BRAND

PROFESSIONAL  
WRITE  
DRESS  
SPEAK

## Their Perception, Your Reality

An airport has the best people watching. When you're at the airport, it's easy to observe other travelers and notice their behavior, good or bad. Imagine this: you're headed on a trip and you're wearing Pi Phi apparel or using a Pi Phi luggage tag. What would it illustrate about you and Pi Beta Phi if you raised your voice at an airline employee because your flight was delayed? What if you waited for your flight while loudly gossiping on the phone? What kind of image are you sending to those around you?

As a Pi Phi, you are a brand representative of the Fraternity. You wear the figurative Pi Phi brand representative blazer 24 hours a day, seven days a week. Everything you do or say is representative of Pi Phi and conveys an image of who we are as an organization. What does this mean for you? How do you protect Pi Phi's brand, our image?

We, as individuals, have the personal responsibility to be the best brand representative for the Fraternity. Our brand — who we are as a Fraternity — comes down to responsible promotion in our appearances, demeanors, values and ethics. Consciously controlling our actions and behaviors, and therefore protecting the brand we all treasure, ensures the Fraternity exists — today and for future generations.

## What Encompasses the Brand?

The brand is more than the logo; it's everything you say, wear or write as a member of the Fraternity. It's our single most powerful marketing, morale and loyalty-building tool. The Pi Beta Phi brand includes, but is not limited to:

- Printed materials
- Philanthropic events
- Campus events
- Social media sites, such as Facebook and Twitter
- Chapter or alumnae organization websites
- Recruitment
- Conversations with members and non-members
- Emails
- Sisterhood retreats
- Social events
- Wearing your letters, the crest or anything Pi Phi-related
- Pi Phi-related items on your desk at work
- Alumnae organization events

## What's with the Web?

Each chapter and many Pi Beta Phi alumnae organizations have dedicated websites to serve Potential New Members, family members, educational institutions and local and national media.

Did you know if you Google a chapter by name, the chapter's website is usually one of the first sites to display in the results? Because this is a high-traffic medium to promote yourself, it's important to keep your site accurate with positive information. What does a website say about a chapter that lists an old membership roster or features a photo with scantily clad members under the header "Sisterhood Events"?

Promoting your chapter or alumnae organization in the best light, on an outlet you have full control over, is key to your success. People are more likely to join an organization that keeps its website current with news, events and photographs.

## Could You Be Sued for Copyright Infringement?

Copyright infringement is a widespread issue, often among fraternities and sororities, particularly when it comes to special events. Have you ever seen Dr. Seuss<sup>®</sup>-themed philanthropy decorations or a recruitment shirt with the slogan, "Pi Phi Gives You Wings?" Both are examples of copyright infringement: the reproduction, distribution, public display or derivative of a copyrighted work without the permission of the owner.

Changing the wording to include Pi Beta Phi and removing the brand name is a direct violation of copyright laws. This is not something to brush off; there are severe consequences for copyright violations including cease and desist orders, fines and even lawsuits.



## The Power of Social Media

It's incredible to think Facebook was founded on Harvard's campus just nine years ago and Twitter was founded in 2006. For many, it seems we have been using these social outlets forever. And in that short time span, the power and influence of social media has grown exponentially.

"Social media isn't just for the younger generations," says Electronic Media Manager JANELLE SCHROEDER, California Mu, who monitors all Pi Phi-related social media posts as part of the Headquarters team. "Members of all ages use social media on a daily basis, from New Members to Diamond Arrows."

In fact, collegiate chapters and alumnae organizations have more than 150 social media sites, and more are being added almost daily.

"Social media has exploded over the last few years, and Pi Phis have followed the trend," says Director Communications REBECCA BRANNEN LASSE, Florida Epsilon. "Because of the widespread use, it's important to develop brand representatives on the local level and encourage the positive messages we see from these sites."

Unfortunately, with the good messages come the bad. "Our members have to realize if a picture is taken or if someone has a smart device in her hands, her conduct will likely show up on social media to either credit or discredit the Fraternity," Rebecca says. "It's no longer a 'what happens in Vegas stays in Vegas' mentality."

And it's not just the younger members who post inappropriately. "Headquarters sends requests to alumnae of all ages to remove photos, tweets or Facebook posts," Janelle says. "Unfortunately, some alumnae think once they've graduated from college, there is little consequence to their behavior. What they often don't realize is that collegiate members look up to alumnae and think this type of behavior is acceptable, or sometimes even encouraged."

The *Leading with Values*<sup>®</sup> seminars "I am a Pi Phi" and "She's Got the Look," available on the Pi Beta Phi website, help educate both collegiate and alumnae members on how we can continue to share and live the values of Pi Beta Phi. Many Pi Phi volunteers also support our members and encourage positive behavior, on social media and in the real world.


## What's on Your Facebook Wall?

On Facebook, you can be a good brand representative for Pi Beta Phi by following this rule of thumb: Never post anything you wouldn't want your grandmother to see. Friends of friends, or even the media, may see something you post onto Facebook if a friend "Shares" your post. Your words or photos may be shared by others, on countless walls or copied to other websites. And even with Facebook's privacy settings, some things like your cover photo are always public.




## Twitter is Aflutter


140 characters seem minimal, but Twitter is prime real estate to promote the Pi Beta Phi brand. But with the ability to retweet and repost, it's impossible to know how many people can see your sentiments — good and bad.

 It's amazing what a year can do #piphilove 3h  
— a Pi Phi recently tweeted


This tweet sends a message about the positive impact Pi Phi can bring to a member's life, especially when paired with one of the Fraternity's official hashtags.

 Fell asleep at [omitted] last night and almost got arrested. That's about as trashy as it gets. 5h  
— a Pi Phi recently tweeted

What's wrong with this tweet? While this tweet never mentions Pi Phi, it still shows this collegian as a poor representative of Pi Phi. In other tweets she mentions Pi Phi, which links her to the Fraternity.

 Love seeing my college chapter, Illinois Alpha, in "The Arrow." I may have graduated, but my heart is still there @PiBetaPhiHQ #PiPhiForLife 2h  
— a Pi Phi recently tweeted

What's right with this tweet? Just about everything. It's positive, it establishes an emotional connection to the Fraternity and uses a hashtag encouraging lifelong commitment, one of the Fraternity's core values.

 SO BORED. Is it okay to start drinking yet? 11h  
#Cheers #Weekend #College #PiPhi  
— a Pi Phi recently tweeted

This member directly uses Pi Phi as part of her Twitter handle, directly linking her negative behavior to the Fraternity. Remember to use hashtags appropriately. Anyone can search Twitter for a hashtag and see your tweet, even if this person does not follow you.

## Isn't That Pinteresting?

Designed to act as an online bookmark system of photos, home ideas, recipes and more, Pinterest is a growing social media outlet. The downfall is how quickly a pin can be reposted onto various boards. A negative pin, such as an inappropriate photo, can spread like wildfire and be virtually uncontrollable.

An alumna recently pinned an example of an inappropriate Pi Phi T-shirt depicting a senior pub crawl including the words "Pi Phi." While the alumna removed the pin immediately upon the Fraternity's request, it is possible her post was repinned, or shared, during the time it was available.

A similar situation arose earlier this year, when a member pinned something on a Pi Phi board that linked to material highly confidential to the Fraternity. In a matter of days, it was untraceable, shared on countless members' Pinterest boards and nearly impossible to corral and remove. Imagine if that was post was something with a negative connotation.

## An Online Community of Bloggers

Many Pi Phis post their writings and photos online via blogs. Some blogs have a single theme, such as Do-It-Yourself projects or fashion trends. But for many, blogs serve as an online journal where opinions are freely shared, both positive and negative.

Blogs are a great way to instantly connect with people all over the world, but that limitless audience also means anyone can view your content. When you mention Pi Phi on your blog, readers link you to the Fraternity. The more positive image you share online, the more others will see the positive image of Pi Beta Phi.

## Appealing vs. Appalling Apparel

It's exciting to design swag for events, whether it's a T-shirt, hoodie or hat. But because apparel is very visual, it's an easy way to slip up. It's more than copyright infringement; it's also about the overall tone. These examples have been submitted to Headquarters for approval by Pi Phi collegians or alumnae, and been denied approval, because of poor brand representation.



This T-shirt design has a questionable language reference. Pi Phi encourages the support of philanthropic causes, but using terms with variable or suggestive meanings, like this wording, sends a negative message about the Fraternity.



The words on this shirt, lyrics from a popular country song, do not convey a positive image of the Pi Phi brand. Additionally, it's copyright infringement to use lyrics or taglines created by other companies or individuals.



This is an often requested — and just as often not approved — slogan for Pi Phi T-shirts. The Fraternity does not approve using the words “party” and “Pi Phi” together this way. Be a responsible brand representative and choose positive slogans for your chapter or alumnae organization.



This shirt's hidden meaning is the reason it is on the unapproved list. Most people have heard the term “Save a horse, ride a cowboy,” which has a negative connotation. While the second part of the phrase is only implied on this shirt, it's not an appropriate choice for any Pi Phi apparel.



*Need to order custom T-shirts or other Pi Phi apparel? To ensure you are protecting the Pi Beta Phi brand, order from Pi Phi Express at [www.pibetaphi.org/store](http://www.pibetaphi.org/store) or from another licensed vendor. For a list of approved vendors, visit [www.greeklicensing.com](http://www.greeklicensing.com).*



## Where Do I Go From Here?

Protecting the Pi Beta Phi brand is a lot to consider. Now imagine this ... you've boarded the airplane and wedged into your middle seat. The passenger next to you notices your letters and asks what Pi Phi means. What would you say?

As a brand representative, it's important to think about the message you send to others around you. Are you struggling to find the right words? Think about the benefits of joining the Fraternity and try crafting a 30-second speech to deliver the next time someone questions your affiliation.

You never know who that person will be; it could be a potential employer who sees Pi Phi on your resume, it could be a Potential New Member during recruitment or it could be a curious stranger. Whatever you say, however you act, dust off that brand representative blazer and remember — you are a Pi Phi for life.

## Top Five Branding Pointers

**#1** If you aren't sure, ask! Fraternity Officers and Headquarters staff are always willing to help you create a message that follows our branding guidelines and puts your best face forward. You can also download a copy of the Brand Governance Manual and Style Guide from the Resource Library on the Pi Beta Phi website to keep as a reference. The guide includes easy-to-follow tips and tools.

**#2** Think twice before hitting the send button. Email messages and social media posts are almost impossible to delete, and future employers have a way of finding old photos or posts you were sure you removed ages ago. Those old posts or photos you thought you removed can always resurface.

**#3** Watch your tone, whether speaking, writing or typing. While you may think you are humorous or clever, not everyone may agree. Keep in mind, according to the Pi Beta Phi Brand Governance Manual, Pi Phis should be presented as "intelligent, forward-thinking women."

**#4** A picture is worth a thousand words. With so many ways to share photos, it's easy to get excited and share photos of a collegiate formal or alumnae happy hour. And while you think a photo with your sisters is harmless, think hard before sharing. It could present an entirely different image out of context.

**#5** Monitor yourself. Use Google Alerts or a similar program to see what others are saying about you. It's amazing what you will see, and gives you a fresh or previously unseen perspective about your chapter or alumnae organization.

# Meet the Carolyn Helman Lichtenberg Crest Award Winners



First presented in 1991, this award honors Ohio Alpha CAROLYN HELMAN LICHTENBERG, who served the Fraternity as Grand President from 1985 to 1991. Recipients are distinguished alumnae who exhibit excellence and outstanding leadership in their career or volunteer service to their communities.

## Carolyn Helman Lichtenberg Crest Award for Community Service

---



**BECKY FOSTER CRANE**  
Iowa Zeta  
University of Iowa

For more than 30 years, BECKY FOSTER CRANE has dedicated her time and energy to causes she feels passionate about in the Houston area. In addition to the service she has given to the Houston Alumnae Club, Becky is currently President of the Board of Directors for the Nehemiah Center, a support center for at-risk children and their families. The Nehemiah Center features a preschool, middle school and an after-school program as well as a library. Becky is also a member of the Board of Trustees at the Texas Institute for Research and Rehabilitation (TIRR) Foundation. The foundation seeks to improve the recovery, health and quality of life for people with spinal cord or brain injuries. Additionally, she is a member of the Executive Committee of TIRR Family, a branch of the TIRR Foundation that generates support and increases community awareness through fundraising events. In past years, Becky has also given of her time to the National Charity League, The Center for Hearing and Speech and The Women's Home.



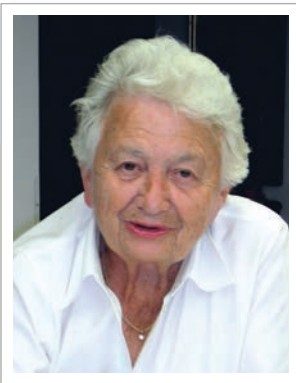
**MAE MARIE MALM BLACKMORE**  
North Dakota Alpha  
University of North Dakota

MAE MARIE MALM BLACKMORE's love of children inspired her lifelong advocacy for them, beginning with her career as Director of the University Children's Center at the University of North Dakota (UND). She has served on the Board of Directors for the Midwest Association for the Education of Young Children and the National Coalition for Campus Children's Care. She also served as a faculty member of the UND Department of Teaching and Learning, where she trained student and beginning teachers. Additionally, Mae Marie has served the North Dakota Alpha Chapter for more than 60 years in various roles, such as Alumnae Advisory Committee member and Chapter House Corporation member. Mae Marie has been Chairman of the Grand Forks Alumnae Panhellenic and Co-chairman of that organization's Fraternity Sorority Endowment Fund. She has also been awarded the title of Outstanding Greek Alumnus of UND on three separate occasions. The UND Office of Women's Programs also presented her with the Dedicated Effort on Behalf of Women Award. Mae Marie is a true role model for women of all ages.



**MARGARET MILAM MCDERMOTT**  
Texas Alpha  
University of Texas

MARGARET MILAM MCDERMOTT's philanthropic work has helped turn Dallas into a great place to live and work. From her involvement in higher education programs to civic organizations, Margaret has focused her talents on optimizing the potential of Dallas. Margaret oversaw the design of University of Texas Southwestern Medical Center's new research and education building. She selected the furniture, wall paneling, carpets and artwork, making it second to none among academic medical facilities. During the past 10 years, she has received honors from 10 different organizations for which Margaret volunteers her time, talents and treasures. These honors include, but are not limited to: Honorary Membership to The American Institute of Architects; the Linz Award, recognizing Dallas citizens for their civic or humanitarian efforts; and The Santa Rita Award, the highest honor bestowed by the Board of Regents of The University of Texas. The city of Dallas also named the Margaret McDermott Bridge in her honor. Margaret turned 101 years old this past February and continues to give 100 percent of her efforts to each and every organization she serves.



**JOAN EDINGTON WALLACE**  
Tennessee Gamma  
University of Tennessee

For JOAN EDINGTON WALLACE, the value of enriching lives through community service is near and dear to her heart. Joan, a charter member of the Tennessee Gamma Chapter, served her chapter as Treasurer and President. Her senior year of college, Joan was named a Torchbearer by the University of Tennessee to honor her academic excellence and service to the University and surrounding community. But Joan's love of giving did not end with graduation. She has served as a Pi Phi volunteer continually throughout her life, and her love of fraternity and sorority life extends far beyond just Pi Phi. Joan served on a board persuading the University of Tennessee to build a Panhellenic building on its campus. This building continues to house organizations today. Joan also served as a Tennessee Gamma Chapter House Corporation member and as Alumnae Panhellenic representative of Pi Beta Phi in Knoxville. In recent years, she has worked with other sisters to raise money for a new Tennessee Gamma Chapter house. To quote a close friend of Joan's, Tennessee Gamma KRISTI BERNARD BENNETT, "Joan loves Pi Phi, and she gives willingly, generously and without expectation of reward ... Pi Phi is lucky to have her."

## Carolyn Helman Lichtenberg Crest Award for Professional Achievement



**MALINDA BERRY FISCHER**  
 Oklahoma Beta  
 Oklahoma State University

MALINDA BERRY FISCHER's professional and service endeavors make her a well-rounded woman of Pi Beta Phi. Her wide range of interests comes from the influence of her parents. Her father was a businessman, a founder and past President of Thomas N. Berry & Company, a family-owned oil and gas business. Her mother's true passion was the arts. After graduating from the Oklahoma State University (OSU) with her bachelor's degree, Malinda attended the Harvard-Radcliffe Program in Business Administration. She worked as an organizational management and development consultant for more than 30 years, and became President and CEO of Thomas N. Berry & Company in 1995. Malinda dedicates much of her time to her alma mater and has served on the OSU Foundation Board of Trustees as well as a leader for the University Club at OSU. Because of her continued service to her community, Malinda has been named an OSU Leadership Legacy in 2002; a gallery in the new OSU Foundation building was named in Malinda's honor in 2005; and OSU listed her as a Distinguished Alumna in 2006.



**SAVANNAH GUTHRIE**  
 Arizona Alpha  
 University of Arizona

SAVANNAH GUTHRIE was told to "think big" by one of her college professors — and think big she did. Savannah is the co-host of NBC News' "Today" show alongside Matt Lauer, and she worked hard to earn that title. Savannah wanted to study business at the University of Arizona, but after taking a few journalism classes, she realized she had found her niche. Savannah worked as a freelance reporter at the NBC affiliate in Washington, D.C., before returning to school for her Juris Doctor from Georgetown University Law Center. Upon graduating and receiving the top score on the Arizona Bar Exam in 2002, Savannah practiced white-collar litigation for two years. She then took her career in another direction by moving back toward television journalism as a Legal Affairs Correspondent for Court TV and then as an NBC News White House Correspondent. She moved into NBC News' "Today" as a third hour co-host in 2011 and then transitioned to co-host in July 2012. As part of the entire "Today" show staff, Savannah won the 2011 Daytime Emmy for Outstanding Morning Program. Savannah also received a 2012 Gracie Award from the Alliance of Women in Media honoring her exemplary contributions to the industry.



**CINDI ARNETT HEMM**  
Missouri Gamma  
Drury University

CINDI ARNETT HEMM’s professional accomplishments are influenced by her desire to educate others. The Tulsa, Oklahoma, public schools are the lucky recipients of her 30 years of hard work and dedication. Cindi’s career has given her the opportunity to work in many different roles. She began as a speech pathologist and teacher, transitioned into a building administrator and then became Principal of Eugene Field Elementary School. During her time as Principal, Cindi transformed the low-income school and its struggling academic scores into a successful, A+ School as well as a Positive Behavior Support School. Thanks to Cindi, Eugene Field Elementary is also the birthplace of “Global Gardens,” a program allowing students and families to plant, harvest, sell and enjoy fresh produce. Though Cindi has retired as Principal at Eugene Field Elementary, she still shares her talents by working as an educational consultant for many low-performing schools across the country. Cindi shares her journey of transforming Eugene Field Elementary in her book, “Miracle on Southwest Boulevard.”



**MIMI NETTLOUR**  
Colorado Beta  
Denver University

MIMI NETTLOUR’s extensive career proves women can make a difference in the corporate world. As a collegian, Mimi took on a heavy course load, majoring in psychology, sociology and French. She then attended graduate school and earned a master’s degree in international management and business administration. Only 10 years after graduation, Mimi had worked her way up the corporate ladder to become a partner at the investment banking firm Boettcher and Company. Using her strong education and determination, Mimi was able to grow her career path even further. For 25 years, Mary worked for Morgan Stanley Smith Barney, a Fortune 100 global financial services firm. She held many titles during those 25 years including: Vice President Wealth Management; Municipal Bond Office Coordinator; Mutual Fund Office Coordinator; and Colorado School of Mines Foundation Financial Advisor. Along the way, Mimi helped found the Women’s Foundation of Colorado and the Women’s Bank, Denver. She also held the position of World Affairs Council Member on the YWCA’s Financial Board.



Keeping your membership profile up-to-date online is a great way for Pi Beta Phi to help connect you with your sisters. In addition, it allows the Fraternity to keep its lifetime commitment to you by sharing Fraternity news, stories and accomplishments.

# CONNECTING WITH SISTERS

## Updated profiles benefit all members. You can:

- Reconnect with old friends
- Find sisters in your new neighborhood
- Network with Pi Phi professionals in your field

To update your profile, visit [www.pibetaphi.org/updatesmyprofile](http://www.pibetaphi.org/updatesmyprofile). If you haven't established an account, simply click "Sign Up."



Friends & Leaders for Life

After all, you weren't just a Pi Phi in college —

# YOU ARE A PI PHI FOR LIFE!



# *A Note of Gratitude from a Delta Gamma Mother*

---

By: Wendy Faust, Delta Gamma Vice President: Fraternity Programming

In the fall of 2009, my daughter, California Nu HANNAH FAUST, began her freshmen year at Ohio University. Hannah's college choice was surprising to my husband and me, as Hannah was always a "big city" girl and Athens, Ohio, is a small college town — and only 90 minutes from our home. As a mother who loved her college years, in particular because of my Delta Gamma sisterhood, I asked Hannah if she was considering going through recruitment. My daughter is very driven and independent, so it was no surprise when she "wanted nothing to do with living with a bunch of girls."



Wendy Faust, a Delta Gamma and mother to a Pi Phi daughter.

At that time, as a Delta Gamma volunteer, I was working closely with our chapter at Ohio University. One evening, I received a call from the chapter's Vice President Membership asking me why I did not write a sponsor form for my daughter, because I had written many for her friends. My response was very matter of fact: "Hannah is not going through recruitment." This response prompted a laugh on the other end of the phone, followed by, "Well, she was here last night at a recruitment party." Of course, I responded I would write a sponsor form immediately!

After sending the form, I called Hannah. We had a lovely conversation for more than 30 minutes in which I asked what was new and she politely responded, "nothing." So I asked her about recruitment, to which she promptly sighed and said, "I can't do anything without you finding out!"

Hannah explained she had not told me about recruitment because she felt more at home with the women of Pi Phi. In fact, she was hoping for a bid from the Ohio Alpha Chapter. She said she did not want to hurt my feelings, as she knew my love and dedication toward Delta Gamma was strong.

I am happy to say Hannah's dream to be a Pi Phi came true. And my dream came true, too. My wonderful daughter had found her place. When she told me she pledged Pi Phi, I knew she was going to experience the wonderful bonds of sisterhood — bonds she would hold dear to her heart forever.

Two years later, Hannah surprised us again with the news she not only wanted to transfer colleges, but she wanted to move across country to attend Loyola Marymount University (LMU) in Los Angeles. Though she didn't know a single person at LMU, she made the move to LA. Within the first few weeks of school, she became friends with some great young women in her classes. They all happened to be Pi Phis.

The women invited Hannah to meetings, social gatherings and quickly immersed her in the California Nu Chapter. They accepted a girl far away from her home and made Hannah feel as though she had always been a part of their chapter. These actions and friendships are what sisterhood is about. As a mother, your children's safety and happiness are your number one priority and the women of California Nu made my daughter feel at home and loved. They made me very proud that my daughter picked Pi Phi. I thank Pi Beta Phi from the bottom of my heart for offering my daughter a place to grow as a leader and for always giving her the encouragement to live by her values.

Hannah is getting ready to graduate this May, and I know she will continue to cherish her sisters and meet new Pi Phi sisters wherever life takes her. Just as I sit on the Council of Delta Gamma, with wonderful friends and sisters and "Do Good" for my organization, I know Hannah will experience the same strong sisterhood and will always find a way to give back to Pi Phi throughout her life.

## My Literacy Story: A Brighter Future

By: SONIA PHIPPS BROKAW, Ohio Beta

When I joined the Richmond, Virginia, Alumnae Club in 1990, I was excited to volunteer for its philanthropic project, the Elizabeth Kates Foundation at the Virginia Correctional Center for Women (VCCW). Little did I know what an inspiration the VCCW women would become for me. Over the next 23 years, I would experience how literacy changes lives and provides a second chance for the prison inmates.

The VCCW's first warden, Pennsylvania Beta ELIZABETH KATES, was a visionary who understood the prison experience and how it impacts a woman's life after her release. Elizabeth called upon her Pi Phi sisters to help supplement the state-sponsored educational opportunities at the VCCW, which led to the founding of the Elizabeth Kates Foundation in 1942.

Through the foundation, the VCCW women receive scholarships for onsite community college classes or correspondence classes. Subjects include English, religion and psychology. More than 35 women are awarded scholarships each semester.

In 2007, members of the Richmond Alumnae Club created "Kates Readers," a book club designed for VCCW women seeking their GED. Pi Phi volunteers meet with the women each month and serve as discussion facilitators. High school-level books are chosen to provide high-quality reading instruction and support a woman's ability to succeed on the GED exam. Each book club meeting includes reading aloud to introduce a book and sharing favorite passages. The women are always eager to read and the discussions are lively and thought provoking.

The program has also helped improve literacy among families of the VCCW women. Most of the "Kates Readers" participants are mothers and grandmothers who share their excitement for reading with their children and grandchildren through letters, phone calls and face-to-face visits. A "Kates Readers" participant recently shared with Pi Phi volunteers that reading books in the program has made it much easier to talk with her son about what he is reading in school. Others have sent their favorite books home to their families. Another woman proclaimed her first stop after leaving the VCCW was to get her first library card.



The "Kates Readers" book club at the Virginia Correctional Center for Women meets each month. The group, led by Pi Phi volunteers like Indiana Epsilon MARY PETTICREW SMALLING, Georgia Alpha JOAN ROSSER DALRYMPLE and Ohio Beta SONIA PHIPPS BROKAW has helped improve literacy among the women and their families.

One of the best parts of the job is the touching thank-you letters we receive from the women. The letters say things like, "If it weren't for the Kates Foundation, my continued education wouldn't be possible. It amazes me you care about us and don't label us as social outcasts," and "You bring hope into our lives with all the ways you promote a brighter, successful future. Thank you for making the miracle of learning happen for us." It is amazing to watch these women grow because of the power of literacy and education.

I am grateful to be able to further Pi Beta Phi's literacy platform Read. Lead. Achieve.® through the Elizabeth Kates Foundation and the "Kates Readers" program. And of course, none of our work would be possible without the supportive VCCW staff. The foundation is a truly beautiful way to share my love of literacy, and I am especially blessed to do it alongside my Pi Phi sisters.

# How Did You Celebrate Fraternity Day of Service?

For the eighth year in a row, Pi Phis hosted Fraternity Day of Service events, on or around March 2, to advance literacy in our communities. From hosting book drives to reading with children, Pi Phis made an impact through literacy service.

## Dr. Seuss Birthday Party at Local Children's Hospital

Patients of Peyton Manning Children's Hospital and their families attended a birthday party for Dr. Seuss, hosted by the Indianapolis Alumnae Club and the Indiana Gamma Chapter. During the event, the Cat in the Hat® read aloud and each child received a Dr. Seuss book. The club also presented two wagon loads of new books to the hospital for future patients.



## Homework Help at an After-school Program

Members of the Chesapeake, Maryland, Alumnae Club helped out at "Homework Haven," an after-school program pairing students with adult tutors. In addition to helping with homework, the women gave each student a bundle of new books.

## Pi Phi Promotes Literacy Alongside Her Co-workers

Pennsylvania Zeta KATIE SILVESTRI and her YMCA co-workers visited Cooper Elementary School, in Hampton, Virginia, dressed up as Dr. Seuss characters. The volunteers visited multiple classrooms throughout the day to read with students and discuss the importance of literacy.



## Reading Books with Elementary School Students

The St. Petersburg, Florida, Alumnae Club read books to kindergartners and first-graders at Bay Vista Elementary School in honor of Fraternity Day of Service. The Pi Phis read aloud to more than 160 children, presented a new book to each classroom and gave students bookmarks and stickers.

## Pi Phis Give 4,300 New Books to Children in Need Through the First Book Marketplace

For the second year in a row, alumnae organizations and chapters nominated First Book recipient groups to receive \$100 in First Book Marketplace credits. Pi Phis across North America nominated 107 recipient groups, giving more than 4,300 new books to children in need.

Top: The Indianapolis Alumnae Club and members of the Indiana Gamma Chapter present two wagon loads of new books to Peyton Manning Children's Hospital.

Bottom: Iowa Zeta ROZZY ANDELFINGER WILLIAMS helps a reader at "Homework Haven," an after-school program in Annapolis, Maryland.

Share your literacy service event on the Read. Lead. Achieve. Facebook page at [www.pibetaphiliteracystory.org](http://www.pibetaphiliteracystory.org)! Upload pictures and videos from your event, and also get ideas for future events.

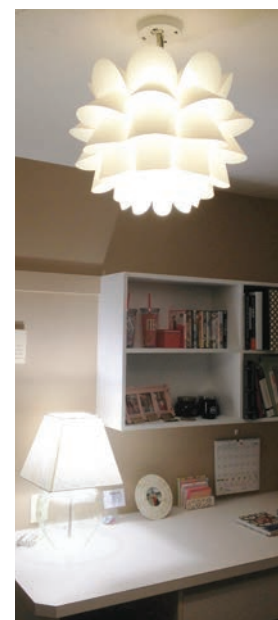
## Heavenly Rooms

The Fraternity Housing Corporation (FHC) recently searched for the best of the best when it comes to Pi Phi collegiate bedrooms. Any woman living in a Pi Phi designated chapter house, lodge or residence hall could submit a photo of her room. First, second and third-place winners all received gift certificates to Pi Phi Express. Thank you to all who entered. The competition was tough!



**First-place:**  
**SHANNON NEHRIG**  
Florida Beta  
Florida State University

When FHC saw Florida Beta SHANNON NEHRIG'S room, they were instantly drawn to the colors and textures. "I've always been a fan of patterns," Shannon said. "Whether its chevron or geometric, I love to mix and match." This fun and welcoming room is a big hit during recruitment because of its bright colors and unique pieces, including a "floating bubble" on the wall that holds Shannon's Betta fish.





**Second-place: JORDAN FISHER**  
Oregon Alpha, University of Oregon

FHC loved how Oregon Alpha JORDAN FISHER used pink to bring life to her room. “My room at Pi Phi is a smaller version of my room at home. I didn’t decorate them similar on purpose, but I couldn’t resist having another pink polka-dot room,” Jordan said. The different shades and patterns are both inviting and cozy, and the handmade pink monogram really makes a statement.



**Third-place:**  
**EMILY BEEKMAN and**  
**ALAINA STELIOTES**  
Ohio Alpha  
Ohio University

This room not only caught the eyes of FHC, but also the Ohio Alpha Chapter House Corporation (CHC). Emily and Alaina recently won the Most Creative Room Award for the Ohio Alpha CHC room contest. “We added the curtains, twinkling lights and white accents to make us feel like we are living on a cloud,” Emily said.



## Collegiate Spotlight

For Louisiana Beta ANDREA HARTLEY, dedicating her life to volunteer service in Africa was not something she had intended to do. But when the Mwizerwa family moved from Rwanda to a home in the Hartley's Nashville neighborhood, she was eager to learn more about their culture. Four years later, Andrea has participated in three service trips to Africa, one with her Pi Phi sisters, and is planning another trip for later this year.

In high school, Andrea was looking for an outlet, something on which she could focus her time and talents. After receiving encouragement from her father, she began volunteering with the African Leadership Refugee Ministry. This nonprofit organization assisted the Mwizerwa family during their move from Rwanda to Tennessee. "My dad could tell I was searching for something in my life — that I needed purpose," Andrea said. She didn't realize how her father's encouragement would change her life until she got involved.

"I got to volunteer two to three times a week with kids, and I love kids," Andrea said, reflecting on the service work she did during high school. She grew so passionate about the organization that her family planned a trip to Africa in order to further their education. Andrea and her father went with Ebralie Mwizerwa, the mother of the family, on her first trip back to Africa since escaping the genocide in 1994.

Andrea's experiences in Africa opened her eyes to all the good she could do through volunteer service. "I also heard Blake Mycoskie, the founder of TOMS®, speak during my first semester of college at Louisiana State University (LSU), and realized I could turn my passion for Africa into my career." That semester, Andrea declared her major to be International Studies with a concentration on Africa.

Andrea also applied to study abroad in Africa and was ecstatic to find out she had been accepted to spend a month at the University of Dar Es Salaam in Tanzania studying Swahili. After her study abroad program ended, Andrea was thrilled to travel throughout Africa. "I have clarity and peace of mind in Africa," Andrea recalled. "I was excited to spend a week volunteering with African Christian Tours and Safaris (ACTS) before meeting up with my family for a safari."

Andrea was not ready to come home at the end of her summer abroad. She spoke with her father about planning another trip, and he suggested she ask some of her friends



This past summer, Louisiana Beta ANDREA HARTLEY and her Louisiana State University Pi Phi sisters spent 10 days volunteering in Kenya.

from school. She immediately thought of her Pi Phi sisters. "I put together a presentation at a Louisiana Beta Chapter meeting, and nine women signed up," Andrea said. She was so excited to share this experience with Pi Phi.

The group of LSU Pi Phis planned a 10-day trip to Kenya with ACTS, the organization Andrea had worked with previously. "We spent most of our time volunteering at an orphanage called Kambui School for the Deaf and Disabled," Andrea said. At the end of their time in Africa, the Pi Phis returned home feeling wiser, humbler and with heavy hearts.

Looking back, Andrea recalled feeling nervous about fitting in at LSU as a freshman. "With the love and support of my Pi Phi sisters, I haven't had a problem," she said. "And now, I can't imagine doing another Africa trip without them."

Andrea has already planned a service trip for this year. She will travel to Zimbabwe for two weeks with 25 Pi Phis.

"This is what I love," Andrea said. "It allows me to give back. I feel the trip will be another positive experience for my sisters, too."

## CALIFORNIA

Every year, the women of California Delta at the University of California, Los Angeles, host an alumnae tea party at the chapter house. Alumnae from the Los Angeles area enjoy brunch, tours of the house and sharing stories. The collegiate women also prepare a slideshow, which showcases events like the chapter's philanthropic efforts. From left, California Deltas MARIAN KUNKEL HOPE, ALYSSA SANTANGELO, ALEXA TASSONE, JACQUELINE KUIPERS, BARBARA HANSON TURNER, ILSE GOMEZ and SARAH DUNSEATH.



The California Epsilon Chapter at San Diego State University dedicates an entire week each year to its graduating class. Events include a *Leading with Values* seminar and dinner with a local alumnae organization to establish contacts for the future. The women also benefit from having many alumnae serve on their Alumnae Advisory Committee and Chapter House Corporation, demonstrating how important it is for chapter members to honor their lifelong commitment to Pi Phi.



## ILLINOIS

The Illinois Zeta Chapter at the University of Illinois recognizes its graduating seniors during Senior Week. The week is a great opportunity for seniors to reminisce about their favorite times as a collegiate member and reflect on how being a member of the chapter has impacted them. During the week, the New Member class and seniors have a private dinner, during which they have the opportunity to spend quality time together before graduation.



## LOUISIANA

At Louisiana State University, the Louisiana Beta Chapter honors seniors at its last meeting of the year. Seniors are asked to stand and be recognized, and also share their plans for after graduation. The seniors hand out various Pi Phi heirlooms to the younger members, including costumes for themed events and dorm room decorations. The evening concludes with a slideshow of pictures, which are contributed by the seniors.



## NEBRASKA

The Nebraska Beta Chapter at the University of Nebraska holds numerous events every year to ensure its seniors and alumnae, as well as undergraduates, understand and uphold the meaning of lifelong commitment. The chapter hosts a Facebook group to help chapter alumnae interact and keep in touch once their collegiate years at Nebraska Beta have come to a close. The women also use this platform to invite alumnae to chapter events, including a Founders' Day brunch.



## OHIO

The Ohio Beta Chapter at The Ohio State University works hard to ensure its members know being an alumna is an integral part of what keeps a chapter, and the Fraternity, going strong. From alumnae serving on the chapter's Alumnae Advisory Committee to an alumnae dinner held each fall, the Ohio Beta women know Pi Phi does not end with graduation.





## PENNSYLVANIA

With seven Pennsylvania Epsilon alumnae serving on the chapter's AAC, the saying, "Pi Beta Phi is not four years, but for life," rings true. From left, Vice President of Member Development KATI BRACALE, Arrow Board Chairman KATIE FINE and Vice President of Communications JOAN TRACHTENBURG share their favorite chapter motto.



## VIRGINIA

The Virginia Zeta Chapter at Virginia Polytechnic Institute & State University celebrated its 30th anniversary, which gave collegians the opportunity to interact with alumnae. The event also allowed the women to see firsthand the wisdom, success and confidence Pi Phi helped the alumnae attain. From left, Virginia Zetas BRITTANY YANTIS, SUSAN TAIT YANTIS, CAROL KOEHLER CATALANO and LAUREN CATALANO.



## TEXAS

At Texas Alpha, the Senior Transition Officer coordinates events throughout the year to honor graduating seniors before they leave the University of Texas campus. At the end of the year, a meeting is held providing the seniors with ways to stay involved in their alumnae life. From left, Texas Alpha seniors EMILIE BIECHLIN, KATIE SALES, KATIE KIRKPATRICK and AMBER RILEY.



## WISCONSIN

The Wisconsin Alpha Chapter at the University of Wisconsin honors graduating seniors every Sunday during chapter meetings. At each meeting, the Vice President of Membership names a "Senior of the Week." A description of the member — provided by her parents — is read aloud and includes childhood memories and post-graduation plans. From left, Wisconsin Alpha seniors, JEN CHAMPION, MARION ACCOLA, LIZ FANDREY and LAUREN AYALA.



# IN HER WORDS



## ADRIENNE MALOOF NEW MEXICO ALPHA

### IN A NUTSHELL ... TELL US ABOUT YOU

My most important job is being a mother of three. I'm also a businesswoman and recently launched a shoe line.

My life is hectic at times but I have fun working alongside my brothers for the Maloof brands, which include the Palms Casino Resort and the Sacramento Kings. And I've enjoyed sharing my life with fans all over the world on "The Real Housewives of Beverly Hills."

### PI PHI TAUGHT ME ...

*"My peacemaker characteristic. I have always been the voice of reason that resolves conflict."*

### BEST ADVICE YOU'VE EVER RECEIVED

### BEST DAY EVER

When I became a mom.

### WHY I LOVE MY JOB

I get to use my creative juices daily. I love what I do so it doesn't feel like work.

### MOST TREASURED POSSESSION

Anything my beautiful boys make for me. I keep every art project and spelling test.

### WHAT'S YOUR LEAST FAVORITE WORD?

No — it's just not in my vocabulary. When people tell me "no," I find a way to make a negative situation into a positive one.

### FAVORITE WORKPLACE EXPRESSION

"You can always do good business with good people, but you can never do good business with bad people."  
— George Maloof Sr.

### ADVICE FOR UP-AND-COMING PROFESSIONAL WOMEN

Look for doors other people haven't thought of opening.

### FAVORITE QUOTE

"Fortune favors the bold."  
— Latin Proverb

Left Brained  Right Brained

Heels  Flats

iPhone  Blackberry

a.m. coffee  a.m. soda

Hours a week 40+  50+  60+

### MAINTAIN YOUR INTEGRITY

## Coming Soon ...

Pi Beta Phi is excited to colonize at George Mason University in the fall of 2013. Pi Phi will also re-establish its chapter at the University of South Carolina in the fall of 2014.



### The Virginia Iota Chapter at George Mason University

Located in Fairfax, Virginia, approximately 30 minutes from Washington, D.C., George Mason University (GMU) is “Where Innovation is Tradition.” GMU is the largest public university in the state of Virginia with an enrollment of more than 32,500 students. The University was recently named the No. 1 Up-and-Coming School by *U.S. News & World Report*.

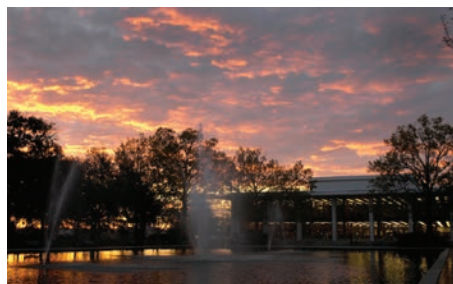
Pi Phi submitted materials and offered a formal presentation to the University’s Extension Committee, and the Fraternity was notified in December it was chosen to colonize in the fall of 2013.



### The South Carolina Alpha Chapter at the University of South Carolina

The rechartering of the South Carolina Alpha Chapter is a momentous event for Pi Phi and for the growing University of South Carolina campus. The enrollment of the University continues to grow every year, and over the last six years the Panhellenic community has doubled in size. South Carolina celebrated the bicentennial of its first class in 2005, and today offers 324 degree programs through 14 different colleges.

Pi Beta Phi submitted materials and offered a formal presentation to the University’s Extension Committee, and in February, the Fraternity received the invitation to recolonize in the fall of 2014.



## *Pi Beta Phi Welcomes Ohio Lambda*

“As a junior in college, one of my biggest regrets was not going through recruitment,” said Ohio Lambda charter member CAYTE TERNES. “I figured my time to join a sorority had passed. When I heard Pi Beta Phi was coming to campus, I knew I was meant to be part of this group. The ideals and values Pi Phi embodies are the ones I have been living my whole life and are truly important to me. The women I met during colonizing recruitment were bold and intelligent — qualities I look for in good friends. I couldn’t have asked for a better fit. I finally found where I belong on the Case Western campus.”



Top: From left, Ohio Lambdas **ABBY ZEE**, **BRE GLOVER** and **CAROL KIM** enjoy the chapter’s Bid Day celebration lunch.

Bottom: From left, Ohio Lambdas **LAURA SUPPLE**, **BECCA DREYER** and **KERI BARRON** celebrate Bid Day by shopping at Pi Phi Express.

It was just a few short months ago, in September 2012, Pi Beta Phi welcomed its newest colony at Case Western Reserve University. In keeping with Pi Beta Phi’s focus on literacy service and values-based recruitment, colonizing recruitment kicked off with a literacy-themed open house structured around Pi Beta Phi’s six core values. The next day, the Ohio Eta Chapter at Denison University assisted with preference events. The New Member class was pledged on Sunday morning and a Bid Day brunch was held immediately following.

Throughout the weekend, local volunteers and the Ohio Lambda Alumnae Advisory Committee assisted the colonizing team. “The support of our Pi Phi volunteers and their dedication to the Ohio Lambda Chapter is overwhelming,” said Director Extension **ANA MANCEBO MILLER**, Texas Beta. “We can’t begin to thank them enough for being such a positive force during the weekend.”

From that day on, the Ohio Lambda New Members not only immersed themselves into Pi Beta Phi, but also the Case Western Reserve University fraternity and sorority community. The women handed out coffee and muffins before attending the Homecoming festivities together, shared cookies from their Pi Phi family cookie exchange, participated in Phi Mu’s Hoopa-palooza and sponsored four children by participating in the University’s Giving Tree program during the holidays.

After much preparation and anticipation, installation weekend arrived. The Ohio Lambda New Members began the weekend-long celebration with a Cookie Shine on Friday, January 11, alongside local volunteers, current and past Grand Council members, Directors, Collegiate and Alumnae Regional Team Officers and Headquarters staff.

“The Cookie Shine was my favorite part of installation weekend,” said Ohio Lambda charter member **MARIA CORSI**. “To be welcomed into the Case Greek community and Pi Beta Phi by sharing our tradition with family and friends was an incredible experience I will never forget.”

Saturday was a full day beginning with Grand President **MARY LOY TATUM**, Oklahoma Beta, initiating 60 women, including three alumnae initiates. “I wasn’t sure what to expect, but the amazing women of Pi Phi impressed me with the



Ohio Lambda charter members gather for a group photo at the installation banquet on Saturday, January 12, 2013.

way the church was arranged so nicely and the way the ceremony so elegantly flowed,” said Ohio Lambda charter member SARA LYNCH. “It was such a heartwarming moment to see the huge smiles on each and every one of my sisters’ faces as we completed our initiation!”

Later that evening, installation banquet Toastmistress BARBIE OLIVER TOOTLE, Ohio Beta, delighted and inspired the Ohio Lambda charter members, their families and friends and the Pi Phis in attendance with her personal story of the amazing people and things Pi Phi has brought into her life.

Also in attendance, were Pi Phis from 30 different chapters. “My favorite part of the banquet was when each Pi Phi in attendance was asked to stand when their chapter name was called,” said Ohio Lambda charter member DEVYN LEE. “It was exciting to see how many Pi Phis were there to support us!”

The banquet culminated when Grand President MARY LOY TATUM, Oklahoma Beta, performed the Installation Ceremony making Ohio Lambda Pi Beta Phi’s 136th collegiate chapter.

“I loved every minute of installation weekend,” said Ohio Lambda charter member NATALIE PRICE. “I loved being

initiated, getting our new badges, learning the secrets that make up Pi Phi and getting to know the alumnae.”

“But I think what will always stand out the most for me is when my parents looked over at me during the installation banquet and said they were proud of me for joining Pi Phi,” Natalie said. “That made my heart swell with pride because my parents got to see what a phenomenal organization Pi Phi really is. I could not be more proud to be a Pi Beta Phi.”

The next chapter in Ohio Lambda’s story has already begun. Just one week after installation, the women participated in the Case Panhellenic community’s formal recruitment and pledged to campus quota with 37 bids given to New Members.

“Having the opportunity to work with these women has been an honor,” said Resident Leadership Development Consultant TORI PINCIOTTI, Ohio Iota. “Meeting the students proved to me Case Western Reserve and Pi Phi are a serendipitous match. Before we even arrived, there were women on this campus who were living Pi Phis values. To find them and bring them into Pi Phi has strengthened the Fraternity as a whole.” ↪

# DON'T MISS OUT

From June 28 to July 1, 2013, Pi Phis will meet in San Diego, California, at the Sheraton San Diego Hotel & Marina. Register today to attend 2013 Convention with your sisters from ocean to ocean.

Convention is a time for celebration and addressing Fraternity business, but did you know it also promises a premier educational experience? Pi Phi experts will lead many of the programs offered throughout convention, and these sessions are the perfect opportunity to share best practices and develop leadership skills.

Inspiring keynote speakers will also take the stage at convention to share valuable lessons for today's Fraternity leaders.

## Keynote Speakers

### **"Making Greek Great" with Dr. Lori Hart**

Lori has served as an active volunteer for Alpha Omicron Pi for almost two decades, and currently serves as the Director of Alcohol Education for Pi Kappa Phi Fraternity. She has served as a speaker for CAMPUSPEAK® since 1999 and visits nearly 100 campuses each year to speak about relationships, alcohol education and fraternity and sorority life.

### **Making the Most of Your Convention Experience with LISA MASTERS**

Lisa, a Georgia Alpha, works for Bank of America® as a Leadership Development Executive for Staff Support and Global Marketing & Corporate Affairs. Drawing on her professional expertise, Lisa will share ways for Pi Phis to challenge themselves as leaders and make the most of their convention experience.

## Registration

Have you visited Pi Phi's convention website [www.pibetaphi.org/convention](http://www.pibetaphi.org/convention)? The site has all the convention details and instructions on how to register. A late fee will be assessed for registrations received after May 1. When booking your airline, please contact Jade Travel at (800) 627-9258. Please call Monday through Friday between 8:30 a.m. and 5 p.m. Central Standard Time.

## Sisterhood Stories

We want to hear from you! Sisterhood stories can relate to any special Pi Phi moment, including: volunteer experiences, philanthropy, reunions, travel adventures or Pi Phi chance encounters. Stories will be shared throughout convention in The Daily Dart, during meals and general sessions and online via Pi Phi's social media. Email your sisterhood stories to [sisterhoodstories@pibetaphi.org](mailto:sisterhoodstories@pibetaphi.org).

## Guest Speakers

### Setting the Stage for Success with MICHELLE LAFORGE WIESER

For Michelle, a Missouri Alpha, Pi Phi gave her the foundation to help grow her career, first in the corporate sector and then as a director for two nationally ranked MBA programs. Michelle will share how you can leverage your unique strengths to be your best self,

whether you're in school, working or volunteering.

### Discovering Your Philanthropic Potential with Leslie Goldman

A "Today" show regular and frequent contributor to *O: The Oprah Magazine*, *SELF* and *Women's Day* magazines, Leslie will speak about the importance of finding our own philanthropic potential and harnessing its power for the greater good. She will also discuss the link

between helping others and helping ourselves.

### Pi Beta Phi Memorial Service with Carol LeBeau

Carol has toured with the Pope, jogged with the president and interviewed Oprah. She also has the distinction of having been part of the longest-running female news anchor team in the country on 10News, the San Diego ABC affiliate. Carol is now a popular

speaker at women's conferences across the country.

### Making Ritual Part of Your Daily Ritual with Pete Smithhisler

Pete, President and CEO of the North-American Interfraternity Conference (NIC), is a sought-after speaker and facilitator who has challenged thousands of men and women to live lives worthy of their fraternal values. Pete will lead a "deep-dive" program sharing how to make Pi Phi's Ritual become part of our daily ritual.

## Pre-Convention Programming Facilitators

### The Leadership Institute — Women with Purpose®

The Leadership Institute — Women with Purpose provides tools to help every woman continually learn and grow, both personally and professionally. A facilitator from The Leadership Institute — Women with Purpose will lead the pre-convention program for emerging leaders and also a "deep-dive" program for alumnae organization leaders.

### CAMPUSPEAK

CAMPUSPEAK is the nation's premier provider of educational speakers and workshops. A CAMPUSPEAK facilitator will lead the pre-convention program on bystander behavior and how individuals can understand their personal power to prevent this type of behavior.

*The Read. Lead. Achieve. pre-convention program, announced in the Winter 2013 Arrow, has been cancelled.*

Bank of America® is a registered trademark of Bank of America Corporation.

The Leadership Institute — Women with Purpose® is a registered trademark of The Leadership Institute — Women with Purpose.

CAMPUSPEAK® is a registered trademark of CAMPUSPEAK, Inc.

## Slate of Officers

Your 2013–2015 Officer Slate will be available on the convention website. Each candidate's photo, resume and vision statements will be listed along with Pi Beta Phi's election rules. Visit [www.pibetaphi.org/convention](http://www.pibetaphi.org/convention) for all the details.

## Halo Heaven

Coming this spring from Pi Beta Phi Foundation ... [haloheaven.org](http://haloheaven.org)! Show your sisters some love by purchasing a tribute halo online. Honorees will receive a virtual halo and be listed in the Foundation's Angel Honor Roll. Tribute halos will also be sold onsite at convention. Don't miss your chance to honor your sisters!



## Remembering Sandy Hook Elementary School Teacher LAUREN ROUSSEAU, Connecticut Alpha

### Sisters Honor a Pi Phi Angel through a Pi Beta Phi Foundation Memorial Scholarship

On December 14, 2012, we lost the lives of 20 children and six adults, including one of our own, Connecticut Alpha LAUREN ROUSSEAU, during the shooting at Sandy Hook Elementary School in Newtown, Connecticut. Pi Phis from around the world mourned the loss of our sister.

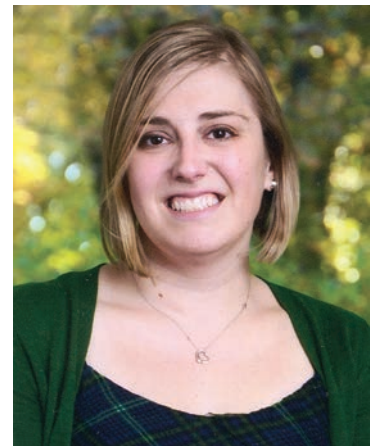
Lauren was initiated into the Connecticut Alpha Chapter at the University of Connecticut on April 13, 2002. Her Pi Phi sisters describe Lauren as someone who truly lived Pi Beta Phi's values. "She had the biggest heart, was always wearing a smile and never had a negative thing to say," said Connecticut Alpha LISA DOLL TOVAR. "Lauren was a genuine representation of what it means to be a Pi Beta Phi."

In addition to being active in Pi Phi, Lauren served as President of her dorm's area council, played intramural volleyball and worked as a part-time teacher at a local day care. One of her college roommates and closest friends, Connecticut Alpha ANNA KWIATKOWSKI, recalls Lauren's love for teaching.

"When we were roommates, Lauren would always come home from the day care and talk about her kids with a smile on her face," Anna said. "I remember one day, we were at a local coffee shop and one of her students was there. Upon seeing Lauren, the student's face lit up, and he ran over and hugged her. Even then, I could tell Lauren was making a big difference in the lives of her students."

After graduating from the University of Connecticut, Lauren received her master's degree in elementary education from the University of Bridgeport. She worked as a substitute teacher for several years while also working other jobs to earn a living. In October 2012, Lauren was hired as a permanent substitute teacher at Sandy Hook Elementary. The good news came just weeks before the shooting would occur.

Accounts from the tragic day indicate Lauren gave her life protecting her young students. To all, Lauren is a hero. "When it came to her students, Lauren was caring, giving and completely selfless," Anna said. "Lauren died doing what she loved best and being with the little angels she loved so much."



Connecticut Alpha LAUREN ROUSSEAU



In the face of tragedy, comes hope. Within days of the shooting, several of Lauren's Connecticut Alpha sisters approached Pi Beta Phi Foundation with the idea to set up a scholarship in memory of Lauren. The Foundation Board of Trustees immediately enacted the scholarship, and in the following weeks, Pi Beta Phi saw an incredible outpouring of support for Lauren through donations to the scholarship. More than \$25,000 was raised in Lauren's memory from both Pi Phis and friends of the Fraternity in just a few short weeks. The first scholarship will be awarded for the 2013–2014 academic year to a Pi Phi collegian pursuing a degree in elementary education.

"Establishing this scholarship was just one way we could honor Lauren's memory and celebrate her life," Lisa said. "Now, through the Lauren Rousseau Memorial Scholarship, we can help other Pi Phis pursue their passion for education, a passion that was dear to Lauren's heart."

The scholarship also honors Lauren's loyalty and love for her friends and family. In addition to her passion for teaching, those close to Lauren knew her for her exuberance and her kindness.

"Lauren loved unconditionally and wanted the best for everyone," Anna said. "She believed in people and was always encouraging and thoughtful. Lauren will be missed by so many in her life, but we can all take comfort in knowing she is a true hero and a beautiful angel."

Pi Beta Phi also mourns the loss of seven-year-old James Mattioli, a Sandy Hook Elementary School student. His mother, CYNTHIA RADLEY MATTIOLI, is a New York Zeta.



Connecticut Alpha LAUREN ROUSSEAU (front row center) with her chapter sisters. From back left, KRISTLE BAUTISTA and MARGOT BAUTISTA. From front left, MICHELLE FARELLA, Lauren and KRISTEN WOODY.

James was an "energetic, loving friend to all," according to an obituary written by his parents. "He would often sing at the top of his lungs and once asked, 'How old do I have to be to sing on stage?'" the obituary said.

We extend our thoughts and prayers to Lauren's family and James' family, as well as all the families and friends affected by the Sandy Hook Elementary School shooting. Though this tragedy weighs heavily on our hearts, we celebrate the bravery shown by the students and teachers at Sandy Hook and by the members of the Newtown community.

For more information about the Lauren Rousseau Memorial Scholarship, or to make an honorary gift, visit [www.pibetaphifoundation.org/laurenrousseau scholarship](http://www.pibetaphifoundation.org/laurenrousseau scholarship). ↪

## Educators Killed at Sandy Hook Honored with President's Citizen Medal

President Barack Obama honored the six educators killed in the Newtown school shooting, including Connecticut Alpha LAUREN ROUSSEAU, with the President's Citizen Medal in February.

The award is given to Americans who have performed exemplary deeds of service for their country or their fellow citizens and is the second highest honor a civilian can receive. Lauren and the Sandy Hook educators were honored for their

dedication to their students, including working long past the school bell to give the children in their care a future worthy of their talents, according to the official White House blog.

Lauren and the other 2012 President's Citizen Medal recipients are an inspiration to Americans across the nation and Pi Beta Phi proudly honors these individuals for their commitment and selfless service on behalf of their communities.



JANE PORTER

## THE GOOD DAUGHTER

California Delta JANE PORTER's novel, "The Good Daughter," tells the story of Kit Brennan, a single, Catholic schoolteacher who is approaching her 40th birthday. During a much-needed girls weekend away, Kit meets a man who challenges who she thought she was, or rather, should be. Kit wants to follow her heart, but with a student crisis and her family's burdens heavy on her mind, she is forced to make a life-changing decision.



## BUTTERFLY MESSAGES

MARY ANN HUSBANDS SEYMOUR



"Butterfly Messages," by Colorado Gamma MARY ANN HUSBANDS SEYMOUR, invites readers into the small town of Hayward and the lives of its eccentric townspeople. While the mayor's flamboyant wife tries to establish a wedding planning business, a widowed father is critically injured, leaving his neighbors to care for his eight children. But just as the town comes together, many notice items missing from their homes and begin to point fingers at one another.

STACEY MARSHALL

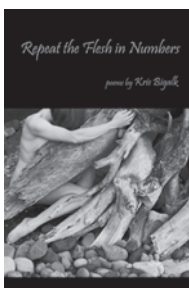
## CAPTAIN COURAGE AND THE FEAR-SQUISHING SHOES

North Carolina Beta STACEY MARSHALL's children's book, "Captain Courage and the Fear-Squishing Shoes," is about Katie, a third-grader who shies away from common scenarios at her new school like show-and-tell and recess. That is, until a unique superhero swoops in to the rescue, demonstrating how to have self-confidence and courage. The story and bright illustrations help children learn specific steps to overcome fear and shyness — a perfect lesson for the classroom or at home.



## REPEAT THE FLESH IN NUMBERS

KRIS BIGALK



The poems in Iowa Eta KRIS BIGALK's debut collection, "Repeat the Flesh in Numbers," examine both the good and bad in life and offer perspectives of generosity, regeneration and grace. Kris' work shifts tone throughout the collection, from humorous tales to musings on love and loss. The vivid images remind us what we do for ourselves — and for each other — is what ultimately defines us.

# Pi Phis to Lobby on Capitol Hill this April



FSPAC Logo

Did you know Pi Beta Phi is part of ongoing lobbying efforts in Washington, D.C.? In fact, for the past eight years, Pi Phi has partnered with other Greek organizations to build relationships with our Congressional representatives. These efforts ensure Greeks have a prominent voice when legislation impacts the fraternity world.

Pi Beta Phi is part of the Fraternal Government Relations Coalition (FGRC), a group unifying the National Panhellenic Conference (NPC), the North-American Interfraternity Conference (NIC) and the Fraternity and Sorority Political Action Committee (FSPAC) in support of issues and policies important to the fraternity world. As part of this coalition, a team of Pi Beta Phi collegians and alumnae will travel to Washington, D.C., from April 21 to 25, 2013, to lobby on Capitol Hill.

This past fall, dozens of Pi Phi collegians applied for a spot on Pi Phi's lobbying team. The Fraternity searched for campus leaders who are studying or have a passion for public policy, political science and/or government. Pi Beta Phi is pleased to announce Illinois Theta SARAH CZUFIN and Ohio Beta ABIGAIL CAMP were chosen to represent the Fraternity.

Abigail and Sarah will be joined by Fraternity Housing Corporation Executive Director REBECCA CULVER RANDOLPH, Oklahoma Alpha, and Pi Beta Phi FSPAC Representative SHEILA CONSAUL, Illinois Theta.

## Meet the Collegians on Pi Phi's Lobbying Team



Illinois Theta SARAH CZUFIN

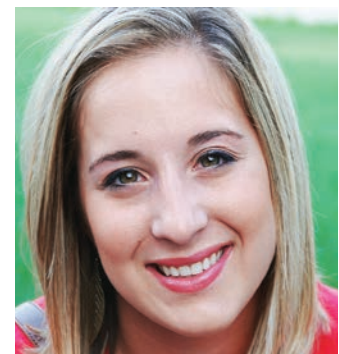
Sarah brings extensive government relations experience to Pi Phi's team. A senior at Bradley University, Sarah is a political science and economics major. She has been an intern for the Peoria, Illinois, Chamber of Commerce and both the Capitol Hill office and

District office of Congressman Aaron Schock. Sarah has also been an intern at Exelon Corporation, where she worked alongside the company's lobbying team conducting research and attending legislative meetings.

"I am very honored to share how my Pi Phi experience has helped me become more involved in philanthropy, a stronger

student and a more confident leader," Sarah said. "I am also looking forward to discussing Greek housing. The Illinois Theta Chapter just opened its new chapter house in the fall, and I saw how much time and effort it takes to make needed safety upgrades and improvements."

Abigail, a sophomore at The Ohio State University, understands the importance of political involvement, particularly as a registered voter in the state of Ohio. This past year, Abigail worked as an intern with the Mitt Romney for President campaign and the Ohio Republican Party.



Ohio Beta ABIGAIL CAMP

Throughout the election, Abigail conducted multiple voter and volunteer outreach initiatives and learned invaluable lessons about America's political process.

"From my experience, young people often pay little attention to politics, and as a result, their voices go unheard," Abigail said. "I want to be a voice for the young people, especially the Greek community. I am excited to share the benefits of fraternity and sorority life and work with other Greeks from across the country who are equally passionate about our community and the issues affecting us."

For more information on Pi Phi's government relations activities, visit [www.pibetaphi.org/governmentinitiatives](http://www.pibetaphi.org/governmentinitiatives).

Follow the lobbying action this April on Twitter using the hashtags #GreekDC and #passCHIA. You can "Like," share, post, tweet and re-tweet to show your support of the Collegiate Housing Infrastructure Act (CHIA) and other important Greek-related issues.

You can also support ongoing Greek-related efforts in D.C. by making a donation to the Fraternity and Sorority Political Action Committee (FSPAC) at [www.fspac.org](http://www.fspac.org).

## Alumnae Spotlight

After Washington Beta TONIA FARMAN's brother passed away from leukemia at age 19, she knew she wanted to help other young people with cancer. What began as a one-time fundraiser has grown into Athletes 4 Cancer: one-week camps in Oregon and Hawaii where cancer survivors learn adventure sports like surfing and stand-up paddleboarding.

"My brother was diagnosed with cancer and passed away within 12 months, and the experience rocked my world," Tonia said. "I was 30 years old and cruising through life, but his death made me question my life's purpose."

Tonia began planning a fundraiser to benefit the Seattle Children's Hospital, where her brother had been treated, and other cancer foundations like The Leukemia & Lymphoma Society®. An avid kiteboarder and surfer for much of her life, Tonia decided to host a one-day water sports competition.

"I reached out to my friends and family, told them my story and explained what I wanted to do," Tonia said. "People of all ages and athletic abilities came to the event, including some cancer patients and some cancer survivors. They were truly 'weekend warriors' who went out on the water and did what they could physically."

The "Kiteboarding 4 Cancer" event raised more than \$30,000 and was such a success Tonia held the event again the next year, and the next. After its third year, Tonia took a step back and decided she wanted to not only raise funds, but also directly help the young cancer survivors and those undergoing treatments who participated in the competition.

She began hosting weeklong camps in Oregon and Hawaii where cancer survivors could learn surfing, outrigger canoeing, stand-up paddleboarding and kiteboarding. The campers also enjoy additional activities like hikes and chats around the campfire. Every camp is fully funded by donations and all campers attend for free.

"By setting our campers up for success in the outdoors, we hope it will be a metaphor for them to go back into life and find success in other areas," Tonia said. "Many campers come to camp scared and nervous. Some have lost limbs to cancer. Others think they will never be active again. But after a week, regardless if they are lying on a board or kneeling on all fours, they catch waves and realize they can be active again. It really changes their whole attitude."

Tonia felt especially drawn to teenagers and young adults



Founder and Director of Athletes 4 Cancer TONIA FARMAN, Washington Beta (right), helps cancer survivors regain confidence through water sports and by connecting with other survivors.

with cancer because she saw how few resources are available to them. Many young people are just becoming financially independent or have basic medical insurance that may not cover cancer treatments. Tonia wanted to bring these individuals together to help them understand they're not alone in their battle against cancer.

"For young survivors, there is a sense that no one understands what you're going through," Tonia said. "At camp, these survivors connect and hear each other's stories. They rediscover their confidence and strength from each other."

When Tonia is not at camp, she promotes survivorship programs, like Athletes 4 Cancer, in the health care community. Tonia never imagined she would be a cancer advocate, but is overjoyed to represent the survivor community. She also recently won *SELF* magazine's "Women Doing Good Award," which honors women who overcome a struggle or challenge to do great philanthropic work.

"Most people think you need a lot of money or need to be well networked to be philanthropic, but that isn't the case," Tonia said. "You don't have to make large donations or be part of an elite group to make a difference — all you need is time and passion."

## ALABAMA

In December, the Tuscaloosa, Alabama, Alumnae Club met at the home of Alabama Beta JEAN FARGASON GORDON for a Christmas brunch. The women were glad to resume their annual holiday tradition, as tornado damage from the April 2011 storms prevented the club from holding the event last year.



## ARIZONA

From left, Montana Alphas EMMY TRUJILLO JACOBSON, JACQUIE SWANK FOSTER and AMBER KING HARRIS ran the Women's Half Marathon in Scottsdale, Arizona, in November. The women trained for several months leading up to the race and wore Pi Phi headbands while being cheered on by their chapter sisters.



## ARIZONA

Members of the Arrowhead-West Phoenix, Arizona, Alumnae Club recently held a Fraternity heritage meeting. This year's meeting focused on the Fraternity's past 100 years of literacy service, including the Pi Beta Phi Settlement School in Gatlinburg, Tennessee. Club members also made plans for literacy service activities during the spring.



## CALIFORNIA

In November, members of the San Jose, California, Alumnae Club volunteered at the Second Harvest Food Bank for an evening of food sorting. The women shucked, sorted and boxed corn, which will feed families in the San Jose area. The Pi Phis are pictured with other Second Harvest volunteers.



## COLORADO

The Aurora, Colorado, Alumnae Club recently held its annual angel and cookie exchange at the home of Texas Delta SUSAN LANDRETH FRY. The women celebrated their Pi Phi friendships and the holiday season.



## FLORIDA

In October, the Greater Orlando Alumnae Club hosted a “White Party” at the Florida Epsilon Chapter house at the University of Central Florida. Along with serving white food, which ranged from white cupcakes to coconut pie, the women wore white to celebrate the chapter’s New Members. During the party, the alumnae and collegians decorated 90 bookplates, which will be placed in donated books.



## KENTUCKY

The Richmond Area, Kentucky, Alumnae Club partnered with the Kentucky Gamma Chapter to sponsor a book drive for The Carnegie Center for Literacy and Learning. From back left, Kentucky Gammas JESSIE BIERMANN and KRISSA SCHMIDT. From front left, Kentucky Gammas CRYSTAL REFFITT CENTERS, CHARITY RATLIFF BRADLEY, SANDRA PANDARU FARRIS and RENA MURPHY KEATH.



## NEVADA

In November, the Las Vegas Alumnae Club held a formal meeting and Cookie Shine. From left, Pennsylvania Eta STACIE TRUESDELL MICHAELS, Nevada Alphas ALLE ZAHER, LESLIE THOMPSON BRODIE, MELODY MARTIN ALLEN, RACHEL TRONTEL HENRY, BRITTANY VAN CLEVE DEGARMO and Arizona Gamma SHANNON SNOW NOACK hold a cookie that says, "Thankful for Pi Phi sisters."



## MISSOURI

In February, the St. Louis Alumnae Club's annual Trivia Night raised more than \$6,000 for the Drop Everything and Read (DEAR) program at Loyola Academy, a middle school for inner-city boys. From left, Colorado Gamma ERIN WARNER, Michigan Gamma CHRISTINE LABADIE, Missouri Alpha JEN ROSS CROSS, Illinois Iota CALEIGH SHARP, Iowa Eta JULIE SCHNEIDER FILEAN, Ohio Beta BARB MORRISON ZENSER, Missouri Gamma KAREN DIESING WHITE and Nebraska Gamma MARGIE BORGES.



## NEW MEXICO

To celebrate New Mexico State University's homecoming this fall, the Las Cruces, New Mexico, Alumnae Club held a reception at a local winery. The members enjoyed wine tasting, lunch and taking pictures in their Pi Phi hoodies. From left, New Mexico Betas KIMBERLY ARCHULETA and MARIA ARMIJO WURTZ and Louisiana Alpha SARAH WITTEN GRACK.



# Remember

By: FRAN DESIMONE BECQUE, New York Alpha  
Fraternity Archivist and Historian

## Something Old, Something New, Something Wine and Something Silver Blue

Some brides look for the latest trends for their wedding, while others wish to incorporate established traditions into their big day. Questions arise on a regular basis about Pi Phi wedding traditions and while there are no documented, official traditions, there are many ways brides have made Pi Phi part of their wedding day.

Some brides choose wine and silver blue as the colors for their wedding party's attire. Others use Pi Phi colors for the decorating scheme for the ceremony or reception. Wine carnations have been used in floral decorations and bouquets, often tied with silver blue ribbon.

Many Pi Phis pin their badges on the inside or outside of their bridal gowns. The Pennsylvania Epsilon Chapter has a special arrow pin many chapter members wear on their wedding day. It is called the Helen Eakin Eisenhower Bride's Pin, in memory of Kansas Beta HELEN EAKIN EISENHOWER. She was a charter member of the State College, Pennsylvania, Alumnae Club. Her husband, Milton, brother of President Dwight D. Eisenhower, was Pennsylvania State University's President at the time of the Pennsylvania Epsilon Chapter's founding.

Pennsylvania Epsilon was installed on November 14, 1953, as the Fraternity's 100th chapter. Helen died eight months later. The alumnae club, chapter and campus were devastated by her death.

On February 20, 1955, at the breakfast held in honor of the chapter's new initiates that year, the alumnae club presented the chapter with a portrait of Helen and with the Bride's Pin. It was a fitting tribute to Helen, whose unselfish service centered on her family, Pi Beta Phi and Pennsylvania Epsilon.

Recently, Virginia Zeta CAROLINE HUTCHINSON RICE, who serves on Pennsylvania Epsilon's Alumnae Advisory Committee, wore the pin on her wedding day. "The women presented me with the Bride's Pin as a surprise after a chapter

meeting," Caroline said. "I was honored to borrow this important part of chapter history for my wedding day."

Some Pi Phi brides choose to be married at Holt House, where Pi Beta Phi was founded. Illinois Alpha MARYALYS EVANS UREY became the first Holt House bride when she married John Urey in April of 1944, just a few years after the Fraternity renovated the historic home.

One of the easiest Pi Phi traditions to incorporate into a wedding is for the bride and groom to take a picture with all the Pi Phis in attendance. Another is for all the Pi Phis in attendance to sing "My Pi Phi Girl" or "Ring, Ching, Ching," at the reception.

If you have incorporated Pi Phi into your wedding, we would love to hear about it. Please contact Fraternity Archivist and Historian FRAN DESIMONE BECQUE, New York Alpha, at [archivist@pibetaphi.org](mailto:archivist@pibetaphi.org). ↪



Grand President GRACE LASS SISSON, Illinois Delta, is the only Grand President who was married during her term of office. Her husband, Francis Hinckley Sisson, a Beta Theta Pi from Knox College, also served his fraternity as President.



## One Chapter House + 91 Collegians = Tradition

By: JENNY MCINTOSH FLAX, Oklahoma Alpha

I had the unique pleasure of being raised in and around the University of Oklahoma campus in Norman, Oklahoma. My parents brought me home from the hospital to a house on College Avenue, a beautiful, tree-lined street that also happened to be home to many fraternity and sorority chapter houses.

Nearly 20 years later, I proudly became a student at the University of Oklahoma and a New Member of Pi Beta Phi. I also had a new University address to call my own: the Oklahoma Alpha Chapter house at 1701 Elm Avenue, just a few blocks away from the house where I grew up.

I loved Pi Beta Phi and our chapter house from the moment I pledged. As a collegian, I served as House Beautification Chair, making sure our home was always well kept and a positive reflection of our University's fraternity and sorority community. I was thrilled when the Oklahoma Alpha Chapter won the award for Most Beautiful House on Campus that same year.

My focus now, as Oklahoma Alpha's Chapter House Corporation (CHC) President, is to preserve the extraordinary experience of living in the chapter house, a tradition that has existed for more than 50 years. Everything about our chapter house made me feel perfectly at home for the three years I lived there, and that's exactly what I want the current chapter members to experience, too.

Today, 91 women live in the spacious, three-story colonial home. Our CHC has worked hard to ensure the women feel safe and enjoy their time at 1701 Elm Avenue. We also want to keep the home modern and convenient for a new era of collegiate women who have different expectations and needs. From providing secure parking to upgrading technology, our CHC works to keep the house up-to-date while also preserving the house's historical integrity. We want the collegians, and also the alumnae, to always recognize "their"



Oklahoma Alpha Chapter House Corporation President JENNY MCINTOSH FLAX, Oklahoma Alpha, is pictured accepting a \$35,000 check during the chapter's 100th anniversary celebration in 2011. Jenny and her fellow CHC members work to keep the Oklahoma Alpha Chapter house modern for a new generation of collegiate women.

home and feel comfortable and familiar inside the house.

After 10 years of CHC service, I am excited for my next phase of service to Pi Beta Phi. I am not sure what the future will bring for me, but I can guarantee there will always be exciting new changes for the Oklahoma Alpha Chapter house — and equally exciting challenges for the CHC to address. I know those women will find their time as CHC volunteers just as rewarding as it has been for me.

To become a volunteer, email [volunteer@pibetaphi.org](mailto:volunteer@pibetaphi.org) or visit [www.pibetaphi.org/volunteernow](http://www.pibetaphi.org/volunteernow).

## Make Your 'Someday Visit to Holt House' Today

A visit to Holt House in Monmouth, Illinois, is to Pi Phis what Fenway Park is to baseball fans. Call it, Pi Phi mecca. To stand in the home's southwest bedroom, where the whispered promises of 12 young coeds began the women's fraternity movement nearly 150 years ago, is unlike any other Pi Phi experience. While Monmouth may seem miles away, the town is just off the highway for many travelers. You, too, can make Holt House memories like generations of Pi Phis before you.

### ***Pi Phi Mother Attends Daughter's Holt House Initiation***

**NANCY MUTTERS SMITH, Illinois Iota**

As a young mother, I spent my spare time volunteering on Illinois Iota's Alumnae Advisory Committee. My daughter, ASHTON SMITH MONTAGUE, Illinois Iota, would often come to the house with me, and the women would watch her while I attended meetings. I always dreamt Ashton would become a Pi Phi angel. After high school, Ashton attended a community college, but then transferred to Illinois State University, where she pledged Pi Phi. Shortly after, I learned Ashton's initiation would be held at Holt House. The news made me giddy with excitement, as I had never been.

When the day arrived, my first thought was the house looked just as beautiful as it did in pictures, and once inside I was in awe of the history surrounding me. When Ashton's Initiation Ceremony began, I remembered the day I was initiated, and then the day I was Chapter President and initiated 36 women into the bonds of wine and blue. The memories brought tears to my eyes, as I placed my badge on Ashton and looked in her eyes. What a special bond we felt not only as mother and daughter, but also as sisters.



### ***A Holt House Bride***

**MAYNE BRUE SMITH, Illinois Alpha**

My husband and I knew we wanted to have an outdoor wedding. He also knows how much Monmouth College means to me, and agreed to hold our wedding outside on the campus. I suggested having our rehearsal dinner at Holt House, because it brings back memories of Bid Day, initiations and weekly chapter meetings.

On my wedding day, my Pi Phi sisters and I decided we should take a picture at Holt House. After we sang our favorite Pi Phi song on the dance floor, we left my reception and headed to Holt House. My sisters gathered around me for the photo, in nearly the exact same pose we had used over the course of our time at Monmouth. Now, I look back at the photo and remember how Pi Phi and Holt House made my wedding day even more special for me.



## **Two Worlds Collide**

**TONI MARTINOVICH, California Eta**

In 2006, California Kappa FELISA MATTEUCCI LAWSON and I were new Pi Phi volunteers. On our way to Officers Workshop, we decided to fly in early to see the sights. We arrived in Monmouth on the day of a large, citywide festival, but Holt House Curator DENISE TURNBULL, Illinois Alpha, opened the home up just for us. As we toured the beautiful home, I thought to myself, "Thank you to all the volunteers who have loved this house for so many years!" I was amazed at the small staircase and wondered how the women got up and down the stairs in the large skirts they used to wear. And it was interesting to emerge from the historical inside of Holt House and find myself in a modern neighborhood filled with families and everyday life.



## **A Birthday Surprise at Holt House**

**KELSEY SHEEHAN, Indiana Zeta**

After graduating from Ball State University this past spring, I moved to the Quad Cities area for work. Not knowing anyone, I used Sister Search on the Pi Beta Phi website to find Pi Phis in the area. Luckily, I found a Pi Phi sister living in my apartment community. Illinois Alpha HALEIGH TURNER HOYT is the same age and had just graduated from Monmouth College. We became friends instantly. For my birthday, Haleigh surprised me by taking me on my first trip to Holt House. I was so excited to visit. Haleigh also arranged a dinner for me with some Pi Phis who were living in Monmouth. It was wonderful to spend my birthday, my first one away from friends and family, with new Pi Phi sisters.

## **A Lifetime of Holt House Visits**

**PATTY BAIRD LINK, Illinois Alpha**

I grew up six blocks from Holt House. The Fraternity was restoring the home while I was in elementary school. My cousin, Illinois Alpha BEVERLEE STREEDAIN JOHNSON, is 12 years older than me and used to tell Pi Phi and Holt House stories at family dinners.

My first time inside the house was not until I was a student at Monmouth, during sorority recruitment. The Illinois Alpha Chapter held a formal dinner party at the home. I wore a tea-length cocktail dress. The stone wall outside Holt House was decorated with hurricane lamps and the inside was set up for dinner with tablecloths and candles. After dinner, we all went outside and stood on the front steps while one of the chapter members sang "Picture a Girl" from the balcony. It was a lovely evening.

Since then, I have returned to Holt House many times. I served as a member of the Holt House Committee for six years and loved learning about the historical items inside the house like the china, silver, paintings and wax dolls of the founders. Last year, I visited Holt House for the initiation of my granddaughter, LIBBY MEYER, Illinois Alpha. Her ceremony was much like my initiation nearly 60 years ago. Though collegiate life is different now, our Holt House traditions will always stay the same.

Planning a summer vacation?  
Taking a road trip to see  
friends or family? Be sure to  
visit Holt House! Holt House  
is always open Wednesdays  
and Fridays, 9 a.m. to 5 p.m.  
Visits on other days are  
welcome, too! Please call  
Holt House Curator DENISE  
TURNBULL, Illinois Alpha,  
at (309) 734-3988 or email  
holthouse@pibetaphi.org to  
let her know you're passing  
through town.

# The Florida Alpha Chapter Turns 100 Years Old

In January, Pi Phis of all ages gathered at Stetson University in Deland, Florida, to celebrate the centennial of the Florida Alpha Chapter.



Top: Florida Alpha's Executive Council pose with Grand Vice President Finance RAE WOHLHUETER MAIER, Kentucky Beta, and Collegiate Region Four Director KATHY WAGER EWING, Alabama Gamma.

Bottom: In honor of the Florida Alpha Chapter's 100th anniversary, collegians and alumnae gathered for a formal dinner. From left, Florida Alphas CARLY LEES and BRITTANY MCCAUGHEY.

The Florida Alphas hosted a fun-filled weekend consisting of an alumnae versus collegians kickball game, a barbeque on Stetson's quad, a Mad Hatter tea party, an open house at the Florida Alpha Chapter house and a formal dinner held at a local golf course.

Two very special visitors, Grand Vice President Finance RAE WOHLHUETER MAIER, Kentucky Beta, and Collegiate Region Four Director KATHY WAGER EWING, Alabama Gamma, joined the chapter members and alumnae for the celebration. The Florida Alphas were very thankful to have these special visitors in attendance and enjoyed hearing about their favorite Pi Phi experiences.

Another special visitor — from the past — attended the formal dinner: past Grand President MAY LANSFIELD KELLER, Maryland Alpha, portrayed by Florida Alpha CAITLIN HANNAN. May installed the Florida Alpha Chapter 100 years ago, and she shared how pleased she was to see the success and longevity of the chapter, just as she predicted a century ago.

During the formal dinner, numerous chapter members were recognized for the leadership positions they hold within Pi Phi as well as the leadership and involvement they have in other groups on campus. The chapter also recognized many alumnae, including members of its Alumnae Advisory Committee and Chapter House Corporation for their ever-present support of the chapter.

Florida Alpha was pleased to recognize one very special sister, Florida Alpha JANET WHITE STEBBINS, for being the oldest alumna in attendance. Janet was initiated into the Florida Alpha Chapter in 1943.

At the conclusion of the celebratory weekend, the women gathered together to take pictures and mingle with the many Florida Alphas, across generations, who traveled to celebrate this milestone anniversary.

## OHIO

**Eight members of the Ohio Epsilon pledge class of 1966 meet each month for dinner in Toledo, Ohio.**

In the summer, the group gathered on Lake Erie at the home of Ohio Epsilon MARY JOHNSON CARACCI for brunch and a round of golf. From back left, MARY JOHNSON CARACCI, SUZANNE RIER HAHN, CONNIE SCHERER SCHOEN, JACQUELINE KNOWLTON KNEPPER and MAUREEN MAURER JUDY. From front left, BARBARA CHAPMAN MAUNTLER, CATHLEEN DUSZYNSKI HEIDELBERG and SUSAN JANICK ZDAWCZYK.



## WISCONSIN

**Wisconsin Alphas from 1996–1997 pledge classes gathered in Wisconsin during the holidays for a reunion.** The women enjoyed catching up and sharing wonderful Pi Phi memories, as many had not seen each other since college. From back left, KRISTY BUSHEK MARLING, MEREDITH DRAKE WAFLE, KRISTINE MARVER LIZE and SIGNE ERICKSON REICHELT. From front left, BRENDA BALKUNAS WIRTH, MONA REGAN DEJA and SANDY BLASZYNSKI O'KEEFE.



# In Memoriam

Because of space constraints, *The Arrow* will only print the entirety of an obituary for a past Grand President. If you know a sister who has died, please inform Pi Beta Phi Headquarters. Names will only be listed in *The Arrow* if accompanied by a published notice, including those names entered electronically via eReports, Pi Phi's online reporting system. Published notices include a newspaper or newspaper website obituary, a funeral program/prayer card or a listing in a college/university alumni newsletter. Email Alison Bauer at [alison@pibetaphi.org](mailto:alison@pibetaphi.org) or mail to Headquarters.

In Memoriam lists the name and initiation year of each member who has died.

## Alabama Alpha

Ann Hogan de Lethouder, 1932  
Eleanor Kidd, 1932

## Alabama Beta

Beverly Goodwin  
Hapgood, 1949  
Sonie Cook Lyles, 1959  
Carol Morrow-Smith, 1961

## Alabama Gamma

Hellen Cannon Archer, 1960

## Alberta Alpha

Yvonne Mosley Gray, 1949  
Catherine Dickie Ritter, 1947

## Arizona Alpha

Gail Whitney Copeland, 1958  
Shirley Lewis Lake, 1943

## Arkansas Alpha

Della Corn Jones, 1954  
Ann Smith  
Quessenberry, 1943  
Matilda McFaddin  
Wynne, 1947

## California Beta

Sally Saxby Morrison, 1947  
Alice Martin  
Rosenberger, 1936

## California Delta

Patricia Price Kaspar, 1951  
Carlotta Stoddart Keyes, 1936

## California Epsilon

Margaret Sinclair Lazar, 1950

## California Gamma

Paula Turner Earl, 1950  
Kathleen Hambly Smith, 1938

## California Zeta

Cynthia Billig Davis, 1954

## Colorado Alpha

Diane Dozier Beck, 1949  
Dee Graham Demmon, 1929  
Elizabeth Porte Shapiro, 1963  
Margaret Jacobson  
Tanner, 1946

## Colorado Epsilon

Sarah Lutrey Barney, 2002

## Connecticut Alpha

Elaine Perkins Morse, 1960  
Lauren Gabrielle  
Rousseau, 2002  
Felice Erdman Tomer, 1979

## Florida Beta

Carline McDougald  
Moore, 1957  
Catharine Johnson Morrison,  
1959

## Florida Delta

Emily Thompson  
Grossman, 1975

## Florida Gamma

Holly Edwards Lewis, 1931

## Illinois Beta-Delta

Betty Love Gamble, 1937  
Mary Sue Lightfield  
Scheffler, 1959

## Illinois Epsilon

Emma Soper Campbell, 1942  
Martine Horne Justak, 1945  
June Hoogland Tapper, 1946

## Illinois Theta

Joyce Anno Antle, 1947  
Lois Robertson Weidner, 1947

## Indiana Alpha

Veretta Sutton Bell, 1937  
Vivian Dickson Stout, 1931

## Indiana Beta

Maurine Leas Hines, 1943  
Maxine Lowe Ryan, 1941

## Indiana Delta

Mary Bell Grange, 1935  
Libby Barmes Lipstreu, 1938  
Jeanne Busenbark  
Robins, 1942  
Janet Rudolph Suja, 1972

## Indiana Gamma

Betty Billeter Peters, 1946

## Indiana Zeta

Deanna Moorman  
Atkins, 1976  
Mary Carlson Busse, 1967

## Iowa Alpha

Rebecca Rich Kron, 1931

## Iowa Gamma

Ann Wallace Fleming, 1941  
Frances Friley Kuyper, 1943

## Iowa Zeta

Elizabeth Thomsen  
Aldridge, 1949  
Julie Allen Anderson, 1954  
Clara-Jane Gottsch  
Matthews, 1939  
Maxine Redmond, 1935

## Kansas Alpha

Joy Godbehere Bates, 1945  
Cora Hepworth Myers, 1939  
Peggy Schroeder Wells, 1942

## Kansas Beta

Caralee Laming Greene, 1940

## Kentucky Alpha

Mary Morris Bateman, 1943  
Janis Lamar Hawley, 1974  
Elizabeth Mason Moore, 1933  
Joyce Lewis Riggs, 1942  
Mildred Minor Straeffler, 1936

## Kentucky Beta

Sara Coakley Lewis, 1977

## Louisiana Beta

Louise Gray Altick, 1959  
Debra Royer Landry, 1964

## Manitoba Alpha

Ruby Benidickson  
Ashdown, 1940

## Maryland Beta

Shirley Grimes Whelan, 1957

## Massachusetts Alpha

Lucie Deharo Scala, 1934

**Massachusetts Beta**

Catherine Dellea Smith, 1944

**Michigan Alpha**

Marcia Opdyke Cramer, 1949

Betty Barry Mulder, 1937

**Michigan Beta**

Corinne Groscop  
Henderson, 1955

Jane Germany Maddox, 1954

Margaret Hiscock  
Perkins, 1933

**Minnesota Alpha**

Vivian Brown Zeuthen, 1932

**Missouri Alpha**

Barbara Faris Gilmore, 1952

Helen Ferguson Harper, 1954

Genevieve Evans  
Merewether, 1933

Shirley Newcomer Riley, 1948

**Missouri Beta**

Elsie Lantz St. Cyr, 1942

**Montana Alpha**

Wilda Parker Bell, 1934

Alice McDowell  
Simpson, 1933

Patricia Brooder Spear, 1949

**Nevada Alpha**

Maida Lee Bradshaw, 1947

**New York Alpha**

Janet Doust Dew, 1943

Ellen Pierce MacClurg, 1930

Donna Payton Wray, 1947

**New York Gamma**

Eleanor Alexander  
Drake, 1934

**North Carolina Alpha**

Louise Russell Berryhill, 1945

Katherine Watters Ramage  
Love, 1943

**North Carolina Beta**

Catherine Barrow  
Kessberger, 1943

**Ohio Alpha**

Patricia Lenhart Scheifly, 1944

**Ohio Beta**

Margaret Bernheisel  
Fleming, 1947

Rosemary Tague  
Mackin, 1943

Carol Hagaman Miller, 1933

**Ohio Delta**

Mary Agle Flax, 1947

Marjorie Eldred Hallock, 1931

**Ohio Epsilon**

Patricia Tanber Camp, 1954

**Oklahoma Alpha**

Harriet Hardeman  
Barbour, 1945

Nancy Lynd Jacobs, 1950

Patience Sewell Latting, 1935

Jerry McKnight Love, 1960

Jenny Grimmett  
Siderius, 1954

**Oklahoma Beta**

Patsy Mitchell Kilgore, 1946

Lida Steph Moore, 1940

Jeanne Price Shannon, 1936

Peggy Roseberry Taylor, 1936

Nan Mount Windle, 1940

**Ontario Alpha**

Flora Mulligan Agnew, 1946

Jean Edwards Evans, 1938

**Oregon Beta**

Virginia Carson  
Johnston, 1931

June Morse Ringe, 1937

**Pennsylvania Beta**

Janet McMahan Reider, 1935

Barbara Ludwig Sirinek, 1937

**Pennsylvania Gamma**

Mary Banker Certain, 1939

**South Carolina Alpha**

Marylyn Fleming  
Easterling, 1953

**South Dakota Alpha**

Elizabeth Baxter  
McKibben, 1938

**Texas Alpha**

Connie Clark Akin, 1942

Marilyn Carroll  
Burroughs, 1942

Patsy Gannon Campbell, 1937

Harriet Schoellkopf  
Deison, 1966

Elizabeth Lander  
Getzendaner, 1943

Nancy Quarles Lorimer, 1941

Nancy Paxton Moody, 1952

Rowena Simpson Osborn, 1936

Bennie Jones Rancich, 1946

Beverly Lyle Williams, 1947

**Texas Beta**

Gloria Bryant Alley, 1946

Ann Hanszen Hughes, 1946

Phoebe Monteith Strange, 1952

Suzanne Smith Tubb, 1951

**Texas Gamma**

Patti Hill King, 1955

**Texas Zeta**

Julia Baylor Murray, 1977

Marguerite Dunson  
Williams, 1977

**Utah Alpha**

Mildred Harris Clark, 1943

Muriel Hanson Hardy, 1930

Carrol Jex Walton, 1945

Alice Moyle Broadhead  
Yeates, 1937

**Virginia Alpha**

Betty Basinger Frierson, 1943

**Virginia Gamma**

Barbara Bowman  
Allison, 1950

**Washington Beta**

Gail Gunn Close, 1944

Peggysue Theis Ellis, 1946

Marion Rolstad Jantzen, 1942

**Washington Gamma**

Grace Fullager Richey, 1949

**West Virginia Alpha**

Anne Carper McKee, 1943

**West Virginia Beta**

Betty Hinchman  
Perkins, 1951

**Wisconsin Alpha**

Doris Roethke  
Redmond, 1939

Jean Schwennesen  
Rothe, 1964

**Wisconsin Beta**

Elisabeth Hardin  
Gustafson, 1954

Mildred Moores Stewart, 1929

Marie Swoboda Stitt, 1942;  
affiliated Iowa Gamma

**Wisconsin Gamma**

Jean Hillberg Alvis, 1945

Ina Guyer, 1946

**Wyoming Alpha**

Joan Clark Carr, 1942

Amy Louise Wheatley, 1972

# Pi Phi Express

**X704**  
RAVIE METAL  
WALL HANGING  
\$14



**X600**  
WAVY TUMBLER  
\$10



**X429**  
CHEVRON  
iPHONE® 5 CASE  
\$18

**X608**  
ANGEL SWEETS AND  
ARROW TREATS  
COOKBOOK  
Regularly \$19.95  
Special! \$15



**X453**  
VINEYARD  
VINES™ TOTE  
\$95



**X100**  
CREST T-SHIRT  
\$30



(800) 322-1867

Vineyard Vines™ is a registered trademark of Vineyard Vines, LLC.

iPhone® is a registered trademark of Apple, Inc.

Dogear® is a registered trademark of Dogear Corp.





**MD861**  
GOLDEN  
ARROW PIN  
*Gold gloss.*  
\$20

**MD862**  
GOLDEN  
ARROW PIN  
\$175



**MD850**  
GOLDEN ARROW  
PENDANT  
*Gold gloss.*  
\$20

**MD851**  
GOLDEN ARROW  
PENDANT  
\$175



**MD852**  
DIAMOND ARROW PIN  
*Gold gloss.*  
\$30



**MD136**  
BARREL CHARM  
\$35



**PX511**  
ANGEL WING  
PENDANT  
\$16



**MD141**  
CREST  
PENDANT  
\$38

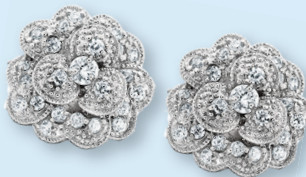


**PX198**  
DOGEARED®  
ARROW EARRINGS  
*Silver-plated.*  
\$36



**PX197**  
DOGEARED  
ARROW EARRINGS  
*Gold-plated.*  
\$40

**PMD199**  
CARNATION  
EARRINGS  
\$40



**PMD198**  
CARNATION  
RING  
\$40



**PMD225**  
CARNATION  
NECKLACE  
\$40



**PX520**  
FESTOON  
ARROW  
NECKLACE  
\$125

**PX519**  
FESTOON  
ARROW  
NECKLACE  
\$30



All jewelry is sterling silver or 10k gold unless otherwise noted.  
Jewelry may be enlarged to show details.

[WWW.PIBETAPHI.ORG/STORE](http://WWW.PIBETAPHI.ORG/STORE)

## Missouri Alpha Chapter House Named 'Notable Historic Property'

The Missouri Alpha Chapter house at the University of Missouri was named a "Notable Historic Property" in Columbia, Missouri, by the Columbia Historic Preservation Commission. The historic designation, first given in 1998, honors buildings more than 50 years old, which play a part in the historical or architectural influences that identify the City of Columbia.

Built in 1930, the Missouri Alpha Chapter house retains its original staircase, crown molding and archways, and even boasts some original furniture from that time. The Historic Preservation Commission commended the chapter for maintaining the historic integrity of the beautiful Georgian Revival-style home.

At the gala recognizing the historic properties and their owners, Missouri Alpha JAN YATES told an entertaining story about a visitor to the house while she was on "front door duty." Jan recalled how she opened the door and encountered a well-known man, whose daughter happened to be visiting her Missouri Alpha cousin. The man went upstairs — after Jan announced "Man on the floor" — to bring down his daughter, Margaret, and her suitcases. The male visitor to the chapter house was none other than President Harry Truman.

The "Notable Historic Property" award was accepted on behalf of the chapter by its Chapter House Corporation (CHC). The CHC members are thrilled to have won this award and hope many more memories are made inside the chapter house for years yet to come.



Top: From left, Missouri Alphas ALISON THARP MARTIN, JAN YATES and DENISE KEY KUSSMAN accept a "Notable Historic Property" award from the Columbia Historic Preservation Commission on behalf of the Missouri Alpha Chapter at the University of Missouri.

Bottom: From left, Missouri Alphas MORGAN DOMIJAN and ANNA ELLIOTT study in the common area of the Missouri Alpha Chapter house, which was built in 1930.

## A New Way to Fundraise for Chapters

Pi Beta Phi Foundation has launched a new online fundraising tool called Playtogive. Chapters can organize their own online fundraisers and ask their friends, families and corporate supporters to sponsor them with a donation, all while playing a fun online game. Funds raised can go to the Foundation's Friendship Fund, Literacy Fund or Emma Harper Turner Fund. Visit [www.pibetaphifoundation.org/playtogive](http://www.pibetaphifoundation.org/playtogive) for more information.

## Do You Have a Story About Your House Director?

Was your House Director like a second mother to your chapter? Did she attend special chapter events like Founders' Day or other celebrations? *The Arrow* wants to hear how your House Director supported your chapter. Please email your story and high-resolution photos to *The Arrow* Editor CONSTANCE DILLON, California Delta, at [editor@pibetaphi.org](mailto:editor@pibetaphi.org).

## The Arrow Reader's Guide

*The Arrow* of Pi Beta Phi is the official quarterly publication of Pi Beta Phi Fraternity. The purpose of *The Arrow* is to present matters of value to Pi Beta Phi; furnish a means of communication among collegiate chapters, alumnae organizations and officers; and represent the worthiest interest of Fraternity women.

### CONTACT THE ARROW:

*The Arrow* of Pi Beta Phi Fraternity  
1154 Town & Country Commons Drive  
Town & Country, Missouri 63017  
TheArrow@pibetaphi.org  
Phone: (636) 256-0680 Fax: (636) 256-8095

### HOW TO RECEIVE THE ARROW

Collegians receive quarterly issues of *The Arrow* each year with payment of collegiate dues through their chapter. Individual copies are mailed to each undergraduate member's permanent address, and each Pi Beta Phi chapter receives six copies.

The Fall *Arrow* is mailed to all alumnae. Dues paying alumnae are mailed the winter, spring and summer issues. *The Arrow* is posted online, and non-dues paying alumnae who have a good email address listed with Headquarters (HQ) receive an email notification. Messages are also posted on the Fraternity's official Facebook page and Twitter when the magazine is available online.

To receive four hard copy issues of *The Arrow*, pay your \$25 annual Fraternity alumna dues to your local alumnae organization or directly to HQ by mailing a check to Pi Beta Phi Fraternity, Alumna Dues, 1154 Town & Country Commons Drive, Town & Country, Missouri 63017. You can also pay your dues online at [www.pibetaphi.org](http://www.pibetaphi.org).

### HOW TO MAKE AN ADDRESS CHANGE OR NAME UPDATE

Visit the profile section of the website, or email your name and/or address changes to [headquarters@pibetaphi.org](mailto:headquarters@pibetaphi.org). You may also call Pi Beta Phi HQ at (636) 256-0680 or mail a written notice to Pi Beta Phi Headquarters.

### LETTERS TO THE EDITOR

Email your letter to the Editor at [editor@pibetaphi.org](mailto:editor@pibetaphi.org). Please include your full name and chapter of initiation. *The Arrow* reserves the right to publish any letter received. Letters may be edited for space and clarity.

### HOW TO GET PUBLISHED

All Pi Phis are encouraged to submit news and stories to *The Arrow*. All submissions are subject to editing for content, grammar and space constraints. When submitting a story, be sure to include a member's preferred chapter, first, maiden and last names. As a general rule, *The Arrow* does not print stories about weddings, engagements, pinnings or birth announcements. Visit *The Arrow* Web page for more information and to download Pi Beta Phi's Photography Guidelines. We cannot guarantee the publication of any submission. We receive so many and space is limited.

### ARROW SUBMISSION DEADLINES

Summer Issue: May 1                      Winter Issue: November 1  
Fall Issue: August 1                      Spring Issue: February 1

## Looking to Develop Your Chapter House Corporation?

Attend the Fraternity Housing Corporation's Housing Symposium at convention this summer! The symposium will give you the basic tools needed to create a successful Chapter House Corporation (CHC). Strong CHCs ensure the safety and well-being of Pi Phi collegians by providing the best housing facilities possible. Symposium participants will have the opportunity to:

- Network with other CHCs and presenters
- Hear how Pi Beta Phi Foundation can support your housing needs, including fundraising support
- See how Pi Beta Phi stacks up in the world of collegiate housing
- Learn how the Fraternity's collegiate housing officers can benefit your CHC
- Gain new ideas and creative problem-solving techniques for when housing-related issues arise

Register for FHC's Housing Symposium and other convention programs at [www.pibetaphi.org/convention](http://www.pibetaphi.org/convention).

## Writing a RIF for a Potential New Member this Fall?

Do you know a woman going through recruitment next fall? Do you want to learn more about Pi Phi's Recruitment Information Form (RIF) for potential new members?

Join us for a virtual presentation with Director of Membership TINA RAY, Pennsylvania Theta, during an online webinar. Tina will share best practices for writing out the newly revised RIF and answer frequently asked questions:

- Wednesday, September 10 at 9 p.m. EST
- Tuesday, March 17 at 9 p.m. EST

Visit [www.pibetaphi.org](http://www.pibetaphi.org) to register today — space is limited!



Pi Beta Phi Fraternity  
1154 Town & Country Commons  
Drive  
Town & Country, MO 63017

CHANGE SERVICE REQUESTED

NONPROFIT  
ORGANIZATION  
US POSTAGE  
PAID  
PERMIT NO 1050  
COLUMBUS, OH

Excited about convention?  
Attending convention?  
Want to follow from home?



**#ocean2ocean**



PI BETA PHI CONVENTION 2013  
June 28–July 1, 2013